



The Office of  
City Councilmember Barb Warwick

## **Summary Document**

### **Background**

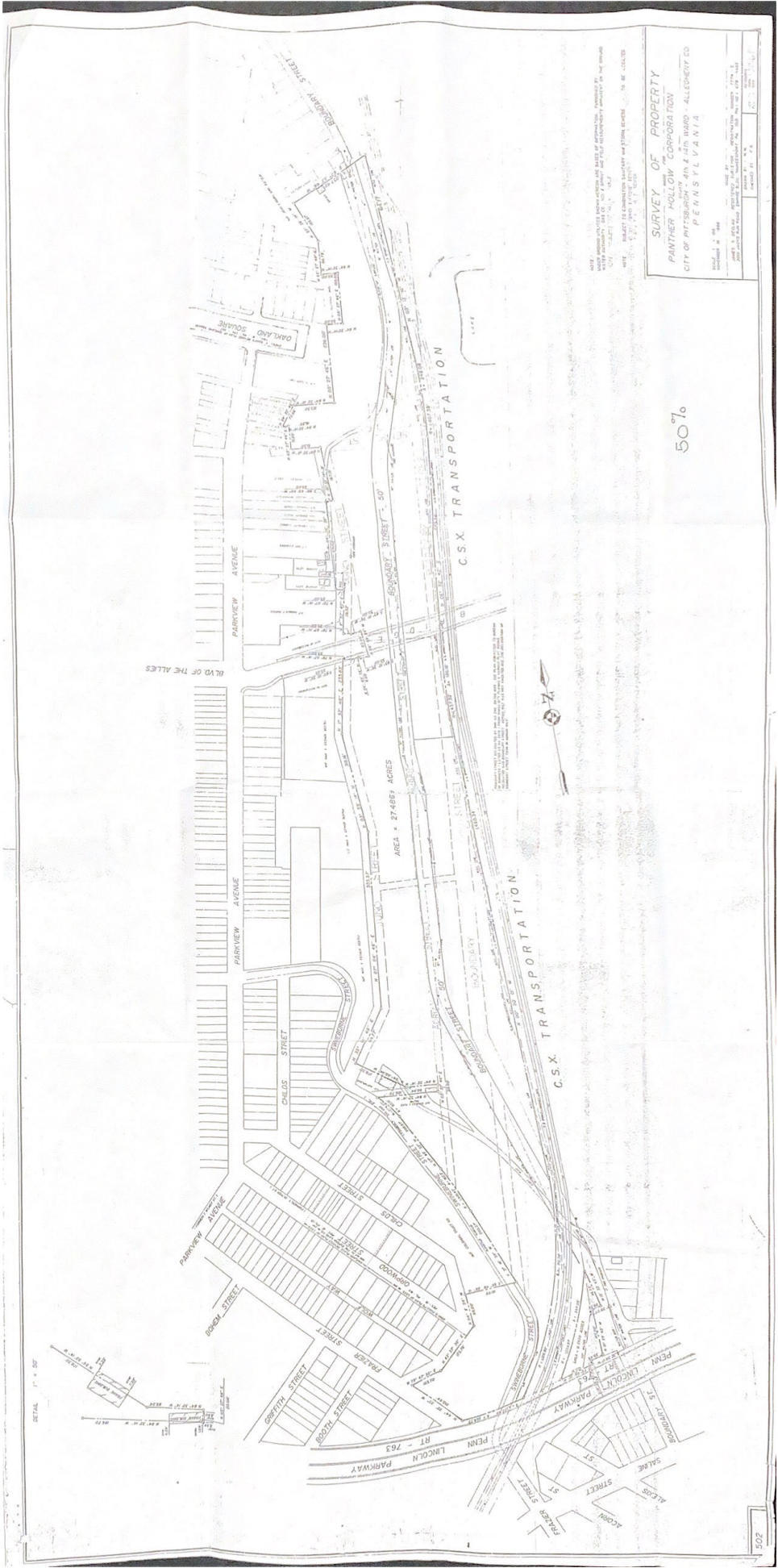
Intent: First, ensure that Junction Hollow is preserved as a park. Second, increase residents' awareness of their rights established under state law to protect parks.

Acquisition of Junction Hollow: In August of 1988, Panther Hollow Corporation entered into an agreement of sale with CSX Railroad to acquire twenty-eight acres of land located in the fourth and fourteenth wards of the City. The City issued several permits to Panther Hollow with respect to the property, for purposes such as parking. However, on November 9, 1989, the City revoked the permits and on December 1, 1989, the City placed concrete jersey barriers around the property, rendering the property unusable and inaccessible. Panther Hollow filed suit that the actions were a taking and requested compensation. See, [\*Gross v. City of Pittsburgh\*](#), 741 A.2d 234 (1999).

The Junction Hollow parcels were the parcels that would have been developed in the Mon Oakland Mobility Project. While this parcel was merged with Schenley Park in Resolution No. 779 in 2005, it was not expressly stated that it would remain passive greenspace. Since the parcels were previously intended to be used as a parking lot, an argument could be made that the City did not fully recognize the importance of maintaining this space as a park and the proposed use as a mobility trail was in line with past considerations. However, residents could have asserted their right to defend this land under the Dedicated and Donated Act by arguing the City has informally recognized the parcel as a park for over two decades. Residents were unaware of this right.

To reiterate, (1) Resolution No. 1619 would formally recognize the importance of maintaining Junction Hollow area as a park and (2) Ordinance No. 1620 would require the City to inform residents, which petition for a hearing regarding a material change of use of a park, of their rights to defend the public trust.

**Attached**: (1) A detailed image of the parcel when it was merged with Schenley Park and (2) a Google Map image of the area.



SURVEY OF PROPERTY  
 PANTHER HOLLOW CORPORATION  
 CITY OF PITTSBURGH AND ALLEGHENY CO  
 PENNSYLVANIA

5076

Edgehill St

nc

Overlook Shelter

Schenley Park  
Soccer Field  
(Lower Field)

Swinburne St

's St

Bellisario's Auto Body  
and Collision Repair

Proctor's Garage

[drumfactorydirect.com](http://drumfactorydirect.com)

Four Mile Run Rd

Big Jim's in the Run

Saline St

Google