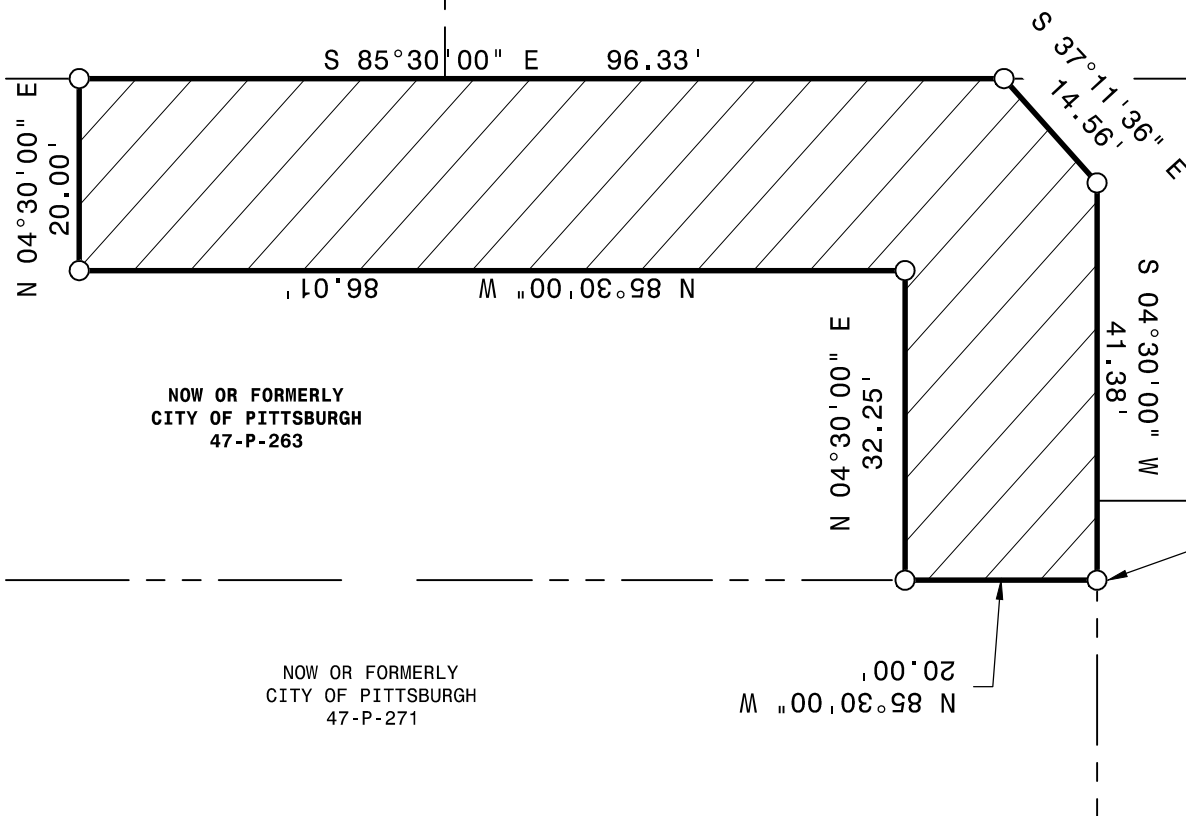




NORTH

NOW OR FORMERLY
JUDITH A. SNYDER
47-K-39

NOW OR FORMERLY
DONNA SIMPKINS
47-P-259



NOW OR FORMERLY
CITY OF PITTSBURGH
47-P-263

NOW OR FORMERLY
CITY OF PITTSBURGH
47-P-271

POINT OF
BEGINNING

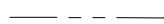
NOW OR FORMERLY
CHARLES T. LEIVO AND
JAMES M. LEIVO
47-P-260

NOTE: BEARING AND DISTANCES SHOWN ON THIS PLAN
REFERENCE DEED BOOK VOLUME 619, PAGE 101.

LEGEND



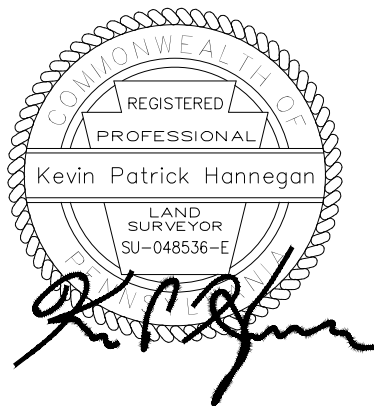
PROPOSED RIGHT OF WAY EASEMENT



APPROXIMATE PROPERTY LINE



SCALE: 1" = 20'



PM: KPH DB: DBD CB: KPH

	GATEWAY®
	The Gateway Engineers, Inc. Full-Service Civil Engineering & Surveying 100 McMorris Road, Pittsburgh, PA 15205 gatewayengineers.com 855-634-9284

**EXHIBIT A
GAS LINE EASEMENT
WITH METES AND BOUNDS**

SITUATE IN

24th WARD - CITY OF PITTSBURGH
ALLEGHENY COUNTY, PA

MADE FOR

PEOPLES NATURAL GAS CO

C-19491-0237

DATE: 09/22/2022

SCALE: 1" = 20'

DWG. NO.: 102,843 A



NORTH

NOW OR FORMERLY
CITY OF PITTSBURGH
47-P-263

NOW OR FORMERLY
DONNA SIMPKINS
47-P-259

S 85°30'00" E
20.00'

NOW OR FORMERLY
CITY OF PITTSBURGH
47-P-271

NOW OR FORMERLY
CHARLES T. LEIVO AND
JAMES M. LEIVO
47-P-260

N 04°30'00" E
51.97'

S 04°30'00" W
51.97'

POINT OF
BEGINNING

RIGHT OF WAY LINE

20.00' 00" 02
M 00°00'00" E 58°58'00" N

TANK STREET 20'

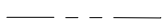
RIGHT OF WAY LINE

NOTE: BEARING AND DISTANCES SHOWN ON THIS PLAN
REFERENCE DEED BOOK VOLUME 619, PAGE 101.

LEGEND



PROPOSED RIGHT OF WAY EASEMENT



APPROXIMATE PROPERTY LINE



SCALE: 1" = 20'



PM: KPH DB: DBD CB: KPH

	The Gateway Engineers, Inc.	
	Full-Service Civil Engineering & Surveying 100 McMorris Road, Pittsburgh, PA 15205 gatewayengineers.com 855-634-9284	

EXHIBIT A
GAS LINE EASEMENT
WITH METES AND BOUNDS

SITUATE IN

24th WARD - CITY OF PITTSBURGH
ALLEGHENY COUNTY, PA

MADE FOR

PEOPLES NATURAL GAS CO

C-19491-0237

DATE: 09/22/2022

SCALE: 1" = 20'

DWG. NO.: 102,843