



A FULL-SERVICE CIVIL ENGINEERING FIRM

C-41144-0001

December 2021

## Winchester Thurston School

4951 Centre Avenue  
City of Pittsburgh  
Allegheny County, PA

### PREPARED FOR

Winchester Thurston School  
555 Morewood Avenue  
Pittsburgh, PA 15213

### SUBMITTED BY

Craig R. Jubic, P.E.  
The Gateway Engineers, Inc.  
100 McMorris Road  
Pittsburgh, PA 15205  
412.921.4030 PHONE  
412.921.9960 FAX  
[www.gatewayengineers.com](http://www.gatewayengineers.com)  
[cjubic@gatewayengineers.com](mailto:cjubic@gatewayengineers.com)

PWSA Project No. 20015.04



# SEWAGE FACILITIES PLANNING MODULE

## **EXHIBITS**

- EXHIBIT A. Copy of DEP Planning Module Component Letter
- EXHIBIT B. Copy of PWSA Water and Sewer Use Approval Letter
- EXHIBIT C. Copy of PWSA Water and Sewer Availability Letter
- EXHIBIT D. Project Narrative
- EXHIBIT E. Plot Plan
- EXHIBIT F. Flow Calculations (Signed and Sealed)
- EXHIBIT G. Sewage Facilities Planning Module – Component 3 – Sewage Collection and Treatment Facilities
- EXHIBIT H. Sewage Facilities Planning Module – Component 4A – Municipal Planning Agency Review
- EXHIBIT I. Sewage Facilities Planning Module – Component 4C – County of Joint Health Department Review

EXHIBIT A.

**Copy of DEP Planning Module Component Letter**

**Craig R. Jubic, P.E.**

---

**From:** donotreply@pa.gov  
**Sent:** Tuesday, September 14, 2021 11:39 AM  
**To:** Craig R. Jubic, P.E.  
**Cc:** RA-EP-ONBASENOT@pa.gov  
**Subject:** [RECEIVED] Scanned Forms review - Reference ID: 31350

Dear Craig Jubic,

Thank you for submitting the SEWAGE FACILITIES PLANNING MODULE APPLICATION MAILER 3800-CD-BCW0359 form to DEP.

**Region:** SOUTHWEST REGIONAL OFFICE

**County:** ALLEGHENY

**Municipality:** PITTSBURGH CITY

**Permit #/Project #:**

**RPCO Reference ID#:**

**DEP Processing Comments (if any):**

""

We will review the document and associated information and notify you with any concerns.

Your form reference # is 31350. Please use this reference # for future inquiries to DEP and include on the check memo when remitting payment.

The DEP receipt date is 9/14/2021 11:38:30 AM. Note: If your form was submitted after business or weekend / holiday, the receipt date is the next business day.



\* This is an automated email from OnBase - DO NOT REPLY \*



EXHIBIT B.

**Copy of PWSA Water and Sewer Use Approval Letter**

9/13/2021

Craig Jubic  
The Gateway Engineers Inc.  
100 McMorris Rd.  
Pittsburgh, PA 15205

Subject: Water and Sewer (W&S) Use Approval  
Project Name: 4951 Centre Ave. (Project)  
PWSA Project No.: 20015.04

Dear Craig:

The W&S Use Application for the Project has been approved, as summarized below:

<b>Type of Flow</b>	<b>Sanitary, gpd</b>	<b>Water, gpd</b>
<i>Project Flow</i>	1440	1440
<i>Existing Flow</i>	875	875
<i>Net Flow</i>	565	565

The PWSA shall request the Department of Environmental Protection (DEP) to issue a Final Determination on the Need for Sewage Planning. If sewage planning is required, we have enclosed for your use the location of the most limited capacity sewer (MLCS). The hydraulic capacity of the MLCS shall be determined via the following method:

- Peak Flow Depth Measurements (Sanitary Net Flow  $\leq$  4,000 gpd)
- Flow Monitoring (Sanitary Net Flow  $>$  4,000 gpd)

Our review was based on information provided by others under the assumption that this information was accurate and complete. Should you have any questions, please do not hesitate to contact me directly at 412-255-8800 x9996 or mbridges@pgh2o.com.

Sincerely,

Midori Bridges  
Cooperative Education Intern

Enclosure(s)

cc: Barry King, PE, PMP – PWSA (via email)  
Kate Mechler, PE – PWSA (via email)  
Robert Herring, PE, PMP – PWSA (via email)  
eBuilder – Filing System (via email)



## Water and Sewer Use Application Form

*Instructions*

The complete W/S Use Application shall be uploaded via e-builder. To obtain an e-builder project folder, please make a request on our website at [www.pgh2o.com/permits](http://www.pgh2o.com/permits). In addition, please refer to the Developer’s Manual for detailed information on application requirements.

*Requirements*

- Application Fee                       W/S Use Application                       Site Plans
- Floor Plans                                       Narrative                                       Flow Calculations

*Project Info*

Project Name: Winchester Thurston School

Address: 4951 Centre Avenue, Pittsburgh, PA 15213

Is the Project located on a lot created prior to May 15, 1972?     YES     NO

Has the lot previously received DEP sewage planning approval?     YES     NO

*Owner/Developer*

Firm Name: Winchester Thurston School

Address: 555 Morewood Avenue, Pittsburgh, PA 15213

Contact Name: John Charney

Email: charneyj@winchesterthurston.org

Phone Number: 412-578-3757

*Consultant*

Firm Name: The Gateway Engineers, Inc.

Address: 100 McMorris Road

Contact Name: Craig Jubic

Email: cjubic@gatewayengineers.com

Phone Number: 412-409-2313

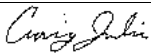
*Flow Data*

Type of Flow	Sanitary, gpd	Water, gpd
Project Flow	1,440	1,440
Existing Flow	875	875
Net Flow	565	565

*Signature*

By signing below, I hereby certify, to the best of my knowledge, that the information provided within the Water and Sewer Use Application is true, complete and accurate.

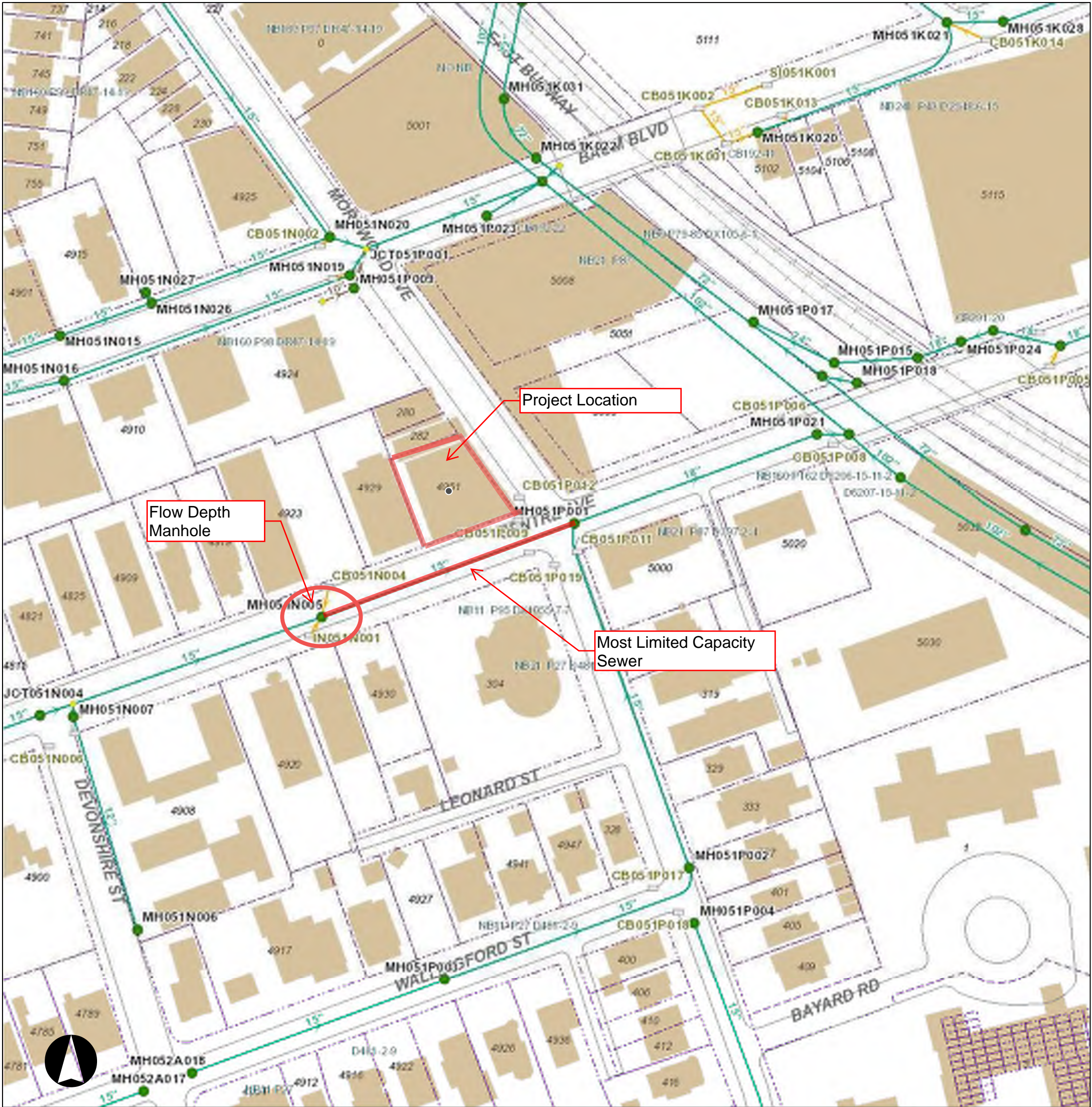
Name, printed: Craig Jubic

Signature: 

Date: 09/01/2021



# 4951 Centre Ave.



## Legend

### WATER

- Meter
- Curb Box
- Water System Pump
- Hydrant
- System Valve
- Dividing Pressure Valve
- Coupling
- Tee
- Cross
- Reducer
- End Cap
- Wash Out

Pressure Monitoring Station

Water Manhole

- Rising Main
- Supply Main
- Transmission Main
- Distribution Main
- Hydrant Branch
- Private Main
- Water Service Line

### SEWER

- Manhole
- Junction
- Inlet

Private Inlet

Outfall

End Cap

Sewer Pump Station

Combined Sewer

Sanitary Sewer

Storm Sewer

Regulated Combined Sewer

Overflow Sewer

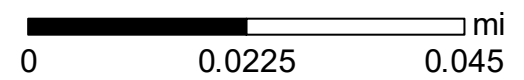
Interceptor

Sewer Force Main

Private Sewer

Undefined Sewer

Green Infrastructure Underground Facilities



Neither the City of Pittsburgh nor the PWSA guarantees the accuracy of any of the information hereby made available, including but not limited to information concerning the location and condition of underground structures, and neither assumes any responsibility for any conclusions or interpretations made on the basis of such information. COP and PWSA assume no responsibility for any understanding or representations made by their agents or employees unless such understanding or representations are expressly set forth in a duly authorized written document, and such document expressly provides that responsibility therefore is assumed by the City or the PWSA.

Date: 9/13/2021



**Most Limited Capacity Sewer (MLCS) Spreadsheet**

<b>PROJECT NAME:</b>	4951 Centre Ave.
<b>PWSA PROJECT NUMBER:</b>	20015.04
<b>PWSA REVIEWER:</b>	Midori Bridges
<b>DATE:</b>	September 13, 2021

<b>LEGEND:</b>	Output Data
	Input Data
	Questionable Data
	Hydraulically Limited Sewer

Upstream MH	Downstream MH	Upstream Invert	Downstream Invert	Length, ft	Diam., in.	Material	n	Area, sf	Wetted P, ft	Slope	Flow, gpd
MH051N0015	MH051P001	885.00	875.00	292.12	15	VCP	0.015	1.23	3.927	3.42%	6,712,791
MH051P001	MH051P021	881.80	874.50	279.48	18	VCP	0.015	1.77	4.712	2.61%	9,534,981
MH051P021	MH051P020	874.52	843.54	34.60	18	VCP	0.015	1.77	4.712	89.54%	55,825,987
MH051P020	MH051K019	823.78	819.72	429.73	102	Brick	0.016	56.75	26.704	0.94%	548,711,407
MH051K019	MH051J009	819.72	815.98	473.23	102	Brick	0.016	56.75	26.704	0.79%	501,855,254
MH051J009	JCT051J008	815.98	814.68	173.40	102	Brick	0.016	56.75	26.704	0.75%	488,794,081
JCT051J008	MH051J007	814.68	814.00	10.56	114	RCP	0.013	70.88	29.845	6.44%	2,371,867,451
MH051J007	MH051J008	814.00	803.76	488.05	114	RCP	0.013	70.88	29.845	2.10%	1,353,897,349
MH051J008	MH026M004	803.76	781.86	1130.60	114	RCP	0.013	70.88	29.845	1.94%	1,300,874,752
MH026M004	JCT026M002	781.86	779.50	151.60	114	RCP	0.013	70.88	29.845	1.56%	1,166,203,442
JCT026M002	MH026M010	779.50	778.60	79.16	129	RCP	0.013	90.76	33.772	1.14%	1,385,785,152
MH026M010	JCT026H006	778.60	775.70	198.50	129	RCP	0.013	90.76	33.772	1.46%	1,570,891,846
JCT026H006	M026H022	775.20	774.80	27.20	129	RCP	0.013	90.76	33.772	1.47%	1,576,061,229
M026H022	MH026G003	774.80	763.23	735.47	129	RCP	0.013	90.76	33.772	1.57%	1,630,090,589
MH026G003	JCT026C011	763.09	759.77	345.35	132	RCP	0.013	95.03	34.558	0.96%	1,354,850,708
JCT026C011	JCT026C012	759.77	759.42	30.65	129	RCP	0.013	90.76	33.772	1.14%	1,388,821,160
JCT026C012	JCT026C006	759.42	758.49	70.93	78	RCP	0.013	33.18	20.420	1.31%	389,045,518
JCT026C006	MH026C006	758.49	750.84	675.97	141	RCP	0.013	108.43	36.914	1.13%	1,752,694,759
MH026C006	MH026B002	750.84	744.36	749.73	156	RCP	0.013	132.73	40.841	0.86%	2,005,652,250
MH026B002	JCT026B003	744.36	742.20	190.05	141	RCP	0.013	108.43	36.914	1.14%	1,756,435,556
JCT026B003	MH026A010	742.20	737.09	580.49	141	RCP	0.013	108.43	36.914	0.88%	1,545,796,645
MH026A010	JCT026A001	737.09	733.11	533.84	141	RCP	0.013	108.43	36.914	0.75%	1,422,575,293
JCT026A001	MH026A009	733.11	730.54	246.78	141	RCP	0.013	108.43	36.914	1.04%	1,681,321,874
MH026A009	MH025D015	730.54	726.94	400.98	141	RCP	0.013	108.43	36.914	0.90%	1,561,094,437
MH025D015	JCT025D009	726.94	725.76	121.37	141	RCP	0.013	108.43	36.914	0.97%	1,624,518,305
JCT025D009	JCT025D008	725.76	724.68	87.33	141	RCP	0.013	108.43	36.914	1.24%	1,832,185,447
JCT025D008	MH025D004	724.68	722.91	225.28	141	RCP	0.013	108.43	36.914	0.79%	1,460,375,694
MH025D004	MH025D005	722.91	720.32	350.60	141	RCP	0.013	108.43	36.914	0.74%	1,416,065,062
MH025D005	JCT025C003	720.32	715.29	678.50	141	RCP	0.013	108.43	36.914	0.74%	1,418,562,085
JCT025C003	MH025C007	715.29	714.08	162.07	141	RCP	0.013	108.43	36.914	0.75%	1,423,575,977
MH025C007	ADC048RA22	714.08	712.10	80.39	141	RCP	0.013	108.43	36.914	2.46%	2,585,656,698

EXHIBIT C.

**Copy of PWSA Water and Sewer Availability Letter**



# WATER AND SEWER AVAILABILITY LETTER REQUEST

All persons planning to perform construction, demolition, or renovation work that will involve water and/or sewer services are recommended to complete this form and submit to PWSA. PWSA will review the request and reply to indicate if PWSA-owned water and/or sewer utilities are present at the site of the proposed work.

This request form is **required** for all of the following types of development. (Please note that the term "sewer" refers to sanitary sewers, combined sewers, and storm sewers.)

1. New water and/or sewer tap(s) for all approved/recorded subdivisions.
2. Change of Use and/or increase in water and/or sewer flows for residential development(s), commercial, industrial and institutional developments (i.e. total project sanitary flow is greater than 799 gallons per day).
3. New water and/or sewer tap(s) for all residential, commercial, industrial, and institutional developments.

Please email the completed form to: [permitinfo@pgh2o.com](mailto:permitinfo@pgh2o.com)

<b>Information to be submitted by the Applicant:</b>			
Property Owner Name:			
Address of Property:			
Proposed Use of Site:			
Closest street intersection to the property:			
<b>Requester Information</b>			
Name:		Date of Request:	
Address:			
Phone Number:			
Email Address:			
Preferred Method of Delivery:	<input type="checkbox"/> Email	<input type="checkbox"/> Mail	
<b>PWSA Use Only:</b>			
PWSA Water Service Available	<input checked="" type="checkbox"/> Yes	<input type="checkbox"/> No	Size / Location: <u>8" Morewood Ave., 20" Centre Ave.</u>
PWSA Sewer Service Available:	<input checked="" type="checkbox"/> Yes	<input type="checkbox"/> No	Size / Location: <u>15" Centre Avenue</u>
Applicant must contact separate agency for water and/or sewer service:	<input type="checkbox"/> Yes	<input checked="" type="checkbox"/> No	
Name of separate agency:	_____		
PWSA Approval:	Signature and Date	<u>9/8/2021</u>	
	Name (printed)	<u>Wendy M. Dean</u>	
	Title	<u>Engineering Tech II</u>	

Disclaimer: The information provided by PWSA does not guarantee capacity of the PWSA-owned water and/or sewer lines to satisfy the needs of the proposed development. The permit application process required by PWSA evaluates the water demand and sewer flows of the development, as provided by the Applicant, and renders a decision on the capacity of the PWSA facilities.

September 8, 2021

Craig Jubic  
100 McMorris Road  
Pittsburgh, PA 15205

**RE: Water and Sewer Availability**  
4951 Centre Avenue

Dear Mr. Smith:

In response to your inquiry on 9/1/2021 concerning water and sewer availability for the area referenced above, please be advised that both water and sewers are available near the site, and water and sewer service will be provided in accordance with the policies and procedures of the Pittsburgh Water and Sewer Authority.

We wish to advise you that, if it is your desire to tap our water and sewer mains for service, your plans and Water and Sewer Use Application must be approved by the Authority, complete with detail showing the type of connection, meter, and backflow device before any work is performed.

Please note that the Authority in no way guarantees that the available lines have the capacity or pressure adequate for your project's needs. It is the responsibility of the project developer, design consultant, and/or architects to determine, at their expense, the adequacy of the existing water system to fulfill their needs.

If you plan to make modifications to the water or sewer system, please submit design drawings to The Pittsburgh Water and Sewer Authority for approval.

**Refer to the Pittsburgh Water and Sewer Authority (PWSA) website ([www.pgh2o.com](http://www.pgh2o.com)) for the complete "Procedure Manual for Developers". All tap in plans and applications must be submitted according to the manual.**

If you have any questions, please feel free to contact me at (412) 255-8800 x 8030. Thank you.

Sincerely,



Wendy M. Dean  
Engineering Tech II

cc: PWSA File



# 4951 Centre Avenue - Water



## Legend

### WATER

- Meter
- Curb Box
- Water System Pump
- Hydrant
- System Valve
- Dividing Pressure Valve
- Coupling
- Tee
- Cross
- Reducer
- End Cap
- Wash Out

Pressure Monitoring Station

Water Manhole

- Rising Main
- Supply Main
- Transmission Main
- Distribution Main
- Hydrant Branch
- Private Main
- Water Service Line

### SEWER

- Manhole
- Junction
- Inlet

Private Inlet

Outfall

End Cap

Sewer Pump Station

Combined Sewer

Sanitary Sewer

Storm Sewer

Regulated Combined Sewer

Overflow Sewer

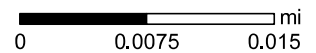
Interceptor

Sewer Force Main

Private Sewer

Undefined Sewer

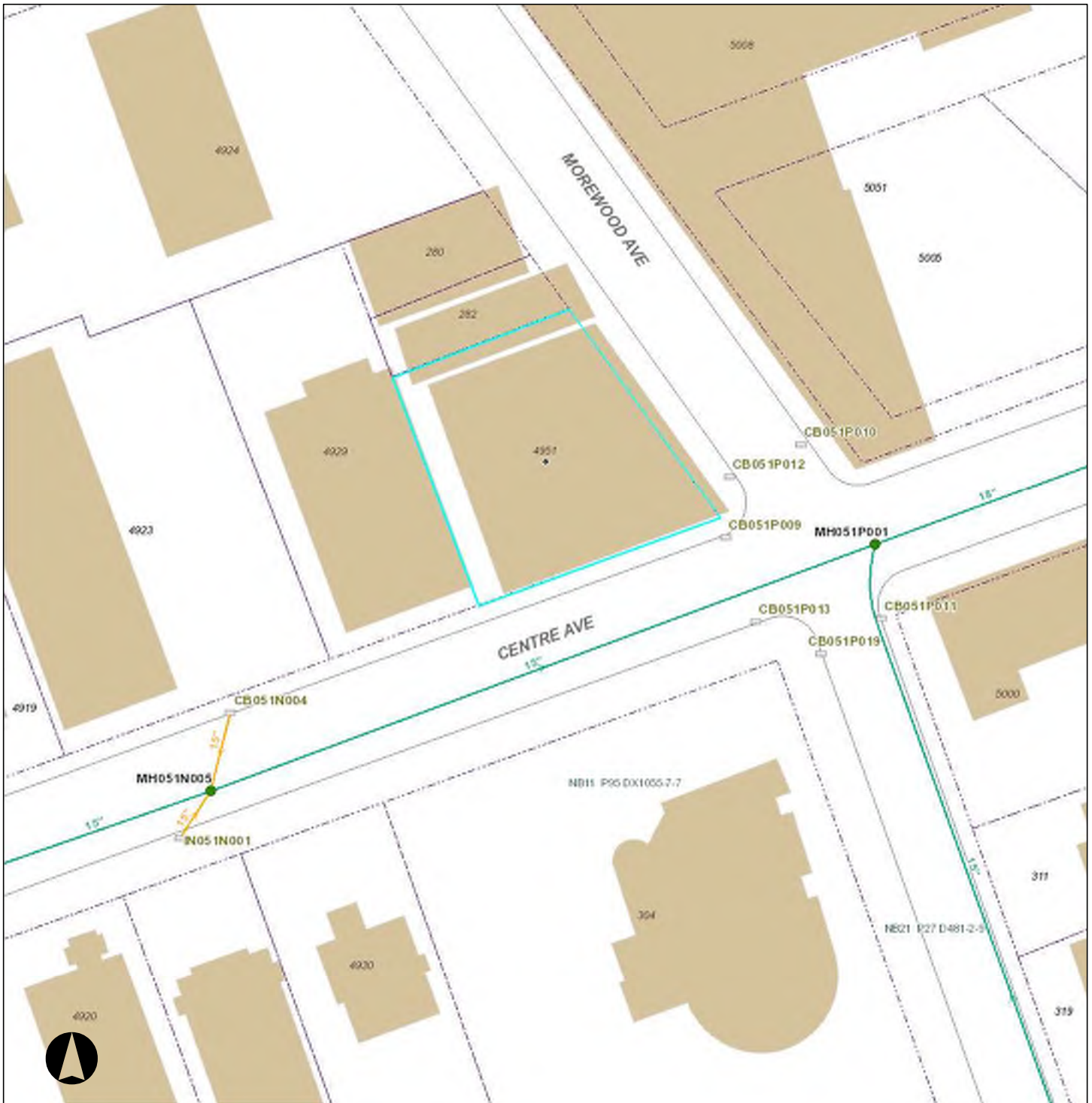
Green Infrastructure Underground Facilities



Neither the City of Pittsburgh nor the PWSA guarantees the accuracy of any of the information hereby made available, including but not limited to information concerning the location and condition of underground structures, and neither assumes any responsibility for any conclusions or interpretations made on the basis of such information. COP and PWSA assume no responsibility for any understanding or representations made by their agents or employees unless such understanding or representations are expressly set forth in a duly authorized written document, and such document expressly provides that responsibility therefore is assumed by the City or the PWSA.

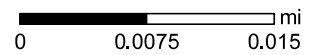
Date: 9/8/2021

# 4951 Centre Avenue - Sewer



## Legend

WATER		SEWER	
	Meter		Manhole
	Curb Box		Junction
	Water System Pump		Inlet
	Hydrant		Rising Main
	System Valve		Supply Main
	Dividing Pressure Valve		Transmission Main
	Coupling		Distribution Main
	Tee		Hydrant Branch
	Cross		Private Main
	Reducer		Water Service Line
	End Cap		
	Wash Out		
	Private Inlet		Manhole
	Outfall		Junction
	End Cap		Inlet
	Sewer Pump Station		Rising Main
	Combined Sewer		Supply Main
	Sanitary Sewer		Transmission Main
	Storm Sewer		Distribution Main
	Regulated Combined Sewer		Hydrant Branch
	Overflow Sewer		Private Main
	Interceptor		Water Service Line
	Sewer Force Main		
	Private Sewer		
	Undefined Sewer		
	Green Infrastructure Underground Facilities		



Neither the City of Pittsburgh nor the PWSA guarantees the accuracy of any of the information hereby made available, including but not limited to information concerning the location and condition of underground structures, and neither assumes any responsibility for any conclusions or interpretations made on the basis of such information. COP and PWSA assume no responsibility for any understanding or representations made by their agents or employees unless such understanding or representations are expressly set forth in a duly authorized written document, and such document expressly provides that responsibility therefore is assumed by the City or the PWSA.

Date: 9/8/2021

EXHIBIT D.

**Project Narrative**

**Anticipated Sewage Flow Calculations**  
Winchester Thurston School  
4951 Centre Avenue, 8th Ward, City of Pittsburgh

The proposed Winchester Thurston School project consists of the renovation of an existing 2-story commercial/retail building for a day school equipped with offices, classrooms, and restrooms among other facilities. The existing building at 4951 Centre Avenue, which consists of existing commercial and retail space, will remain, and undergo interior/exterior renovations. The property of interest is Parcel ID 0051-P-00076-0000-00 in the 8<sup>th</sup> Ward of the City of Pittsburgh and is currently owned by Katselas Tasso G Living Trust per the Allegheny County GIS viewer. The project area encompasses the entire 0.22 acre lot.

The project site will experience an increase in water consumption and sanitary flow due to the conversion of the existing building to school use. An existing water bill spreadsheet was obtained from PWSA for the building and used to determine the existing peak water consumption and sewage flow for the site within the past 5 years. A total peak consumption/flow of 875 GPD exists for this building.

The proposed floor plans and peak flows provided in Table 3-1 of PWSA's Developers Manual were utilized to determine the proposed peak sewage flow and water consumption for the school building. In the proposed floor plans, the school will accommodate 16 office employees and 80 students. A total peak flow of 1,440 GPD is proposed for Winchester Thurston School. Removing the existing flow from the commercial/retail space results in a peak net flow of 565 GPD (1.41 EDUs). Please refer to the enclosed calculations, floor plans, and existing water bill spreadsheets for additional information.

This project will require the termination of existing, active taps (including sewer and water) as well as the construction of a new domestic water service lateral, fire service line, and storm sewer lateral. All water and storm sewer service lateral connections required for the school building will be made using the existing public facilities located in Centre Avenue. The storm lateral connection shall be made into the existing 15"

PWSA sewer. Associated tap-in plans for the private water and storm connections will be submitted to PWSA for review and approval.

The sanitary sewer in Centre Ave is a 15" TerraCotta PWSA owned combination gravity sewer and connects into the Allegheny River Interceptor Sewer A-22 and then to ALCOSAN's treatment plant where the sewage receives final treatment. There is a 20" water main located in Centre Avenue and an 8" water main located in Morewood Avenue.

### Flow Calculation Summary

#### Present Flows – Flow Monitoring

Five (5) flow depth measurements were taken over a one-hour period by Drnach Environmental in MH051N005 to determine the existing peak and average flows present in the sewer of interest. Flow monitoring occurred on 10/1/21 between 6-8 AM. **Analysis of the received depths using Manning's equation for partially filled pipes results in an existing peak flow of 50,413 GPD and an average flow of 14,404 GPD.**

#### Design Capacity

The existing sewer's average and peak hydraulic capacity were calculated by determining the existing slope of the sewer of interest using as-built information and the 3RWW Atlas between the monitoring manhole (MH051N005) and the next downstream manhole (MH051P001). The slope of this sewer per the 1889 sewer as-built plan is 2.404%. The sewer was analyzed under full flow conditions, and a peaking factor of 3.5 (combined sewer) was applied to obtain the peak hydraulic capacity per the PWSA Developer's Manual. **The average hydraulic capacity was calculated to be 1.601 MGD and the peak hydraulic capacity was calculated to be 5.604 MGD.**

#### 5-Year Projected Flow

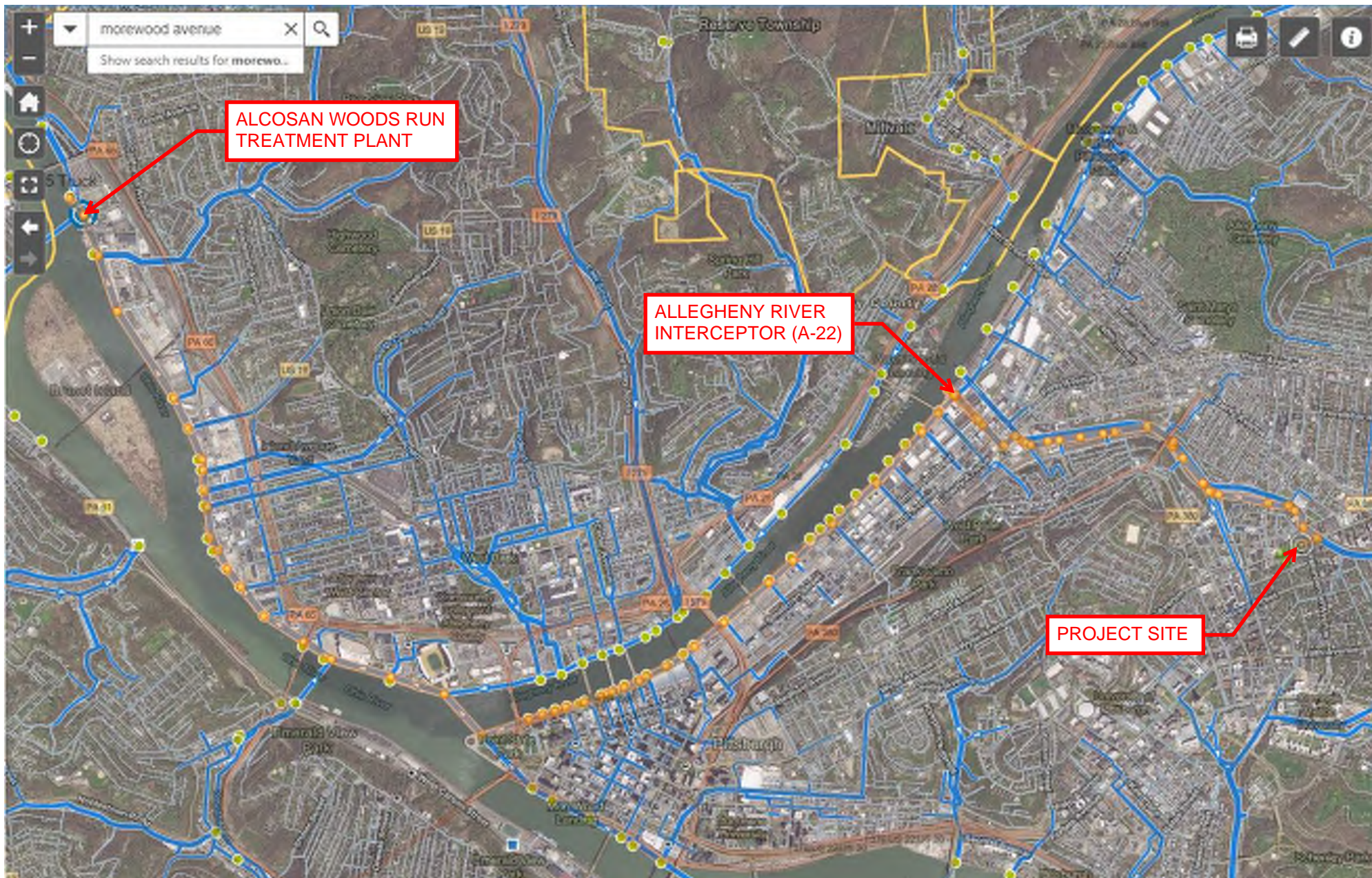
Using the equations in the PWSA Developer's Manual, the net flow, 565 GPD, was added to the present average and peak flows to determine the projected flow in 5 years. **The projected peak flow is estimated to be 0.054 MGD and the projected average flow is estimated to be 0.015 MGD.** Since the 5-year flows are less than the calculated design capacity of the sewer, the additional flow due to the construction of Winchester Thurston School will not overload the sewer.



SEWER MAPPING

WINCHESTER THURSTON SCHOOL

4951 CENTRE AVENUE, 8TH WARD, CITY OF PITTSBURGH





**Alternatives Analysis**  
Winchester Thurston School  
4951 Centre Avenue, 8th Ward, City of Pittsburgh

The proposed short-term and long-term ultimate method of sanitary sewage conveyance and treatment of the total project flow of 1,440 GPD (net flow of 565 GPD) from the Winchester Thurston School day school building will involve the use of an adequately designed sanitary sewer lateral, owned and maintained by the property owner, connecting into the PWSA combination sewer system located in Centre Avenue. This PWSA sewer system connects into ALCOSAN's Allegheny River Interceptor Sewer at the A-22 Regulator Structure and sewage flows via gravity to ALCOSAN's Woods Run Treatment Plant.

The project site is located within the Local Neighborhood Commercial (LNC) within the City of Pittsburgh. The adjacent properties are located within the Educational/Medical Institution (EMI), Urban Neighborhood Commercial (UNC), and Multi-Uni Residential Moderate Density (RM-M) zoning districts. All adjacent establishments utilize the existing PWSA sewer system as their ultimate sewage disposal conveyance system and the Woods Run Treatment Plant as their ultimate sewage treatment method.

There are no feasible sewage disposal alternatives because access to the public sewer system is available, and the existing building encompasses almost the entire property as well as abuts the adjacent buildings/properties. If public sewers were not available, sewage could be temporarily stored using on-site holding tanks and trucked to an off-site facility; however, this alternative is not viable as a long-term disposal solution per 25 Pa. Code §71.63(c). Additionally, an on-lot treatment system cannot be utilized because there is no available area to install a system that would be able to treat sewage generated by the school. Finally, there are no streams located on or near the project site; therefore, a stream discharge system cannot be used to dispose of the apartment building's sewage.



## 1. PROJECT INFORMATION

Project Name: **Winchester Thurston School**

Date of Review: **10/14/2021 11:09:55 AM**

Project Category: **Development, New public/community development (school, library, church, museum)**

Project Area: **0.47 acres**

County(s): **Allegheny**

Township/Municipality(s): **PITTSBURGH**

ZIP Code:

Quadrangle Name(s): **PITTSBURGH EAST**

Watersheds HUC 8: **Lower Allegheny**

Watersheds HUC 12: **Allegheny River-Ohio River**

Decimal Degrees: **40.454236, -79.944805**

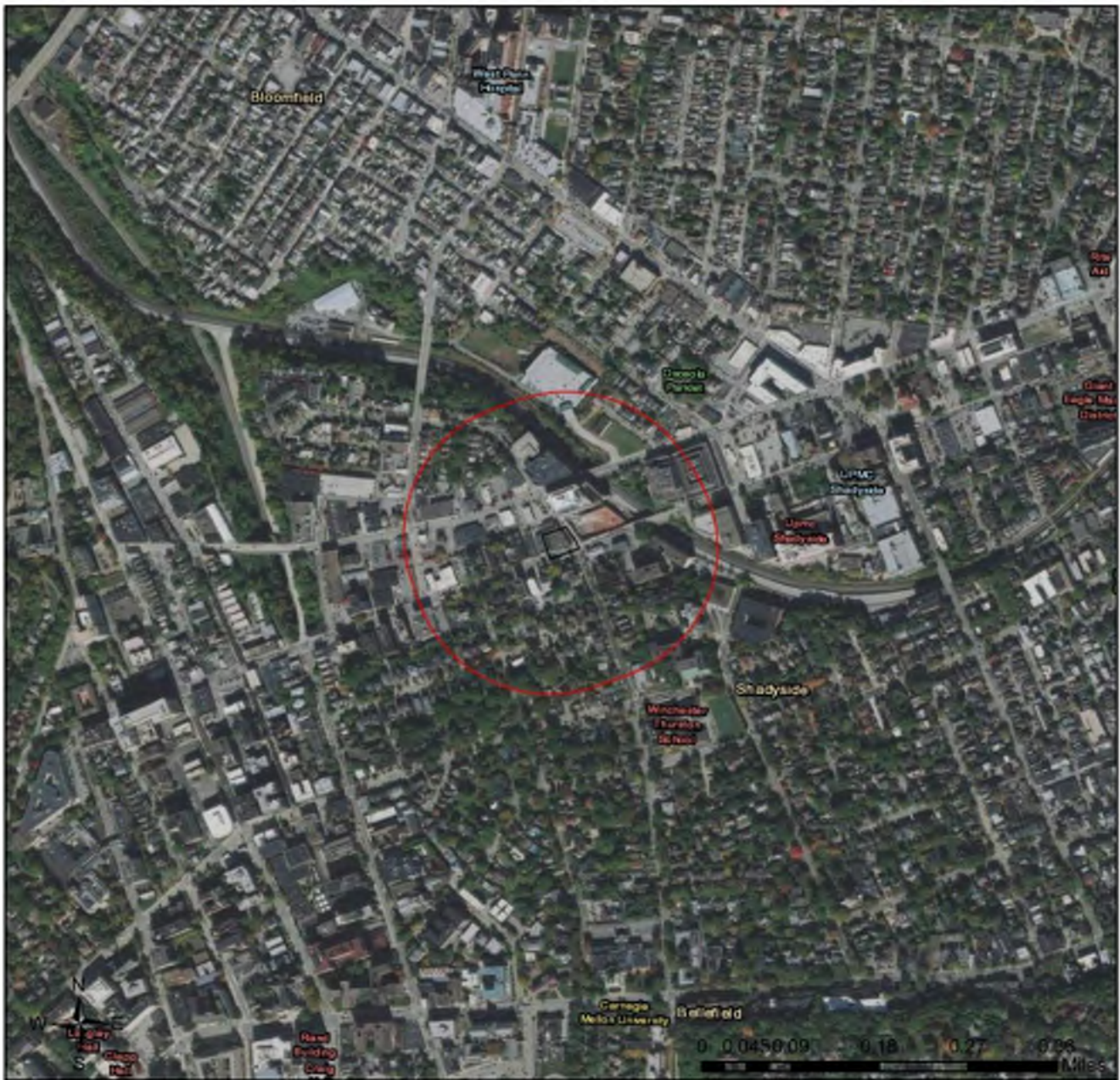
Degrees Minutes Seconds: **40° 27' 15.2482" N, 79° 56' 41.2982" W**

## 2. SEARCH RESULTS

Agency	Results	Response
PA Game Commission	No Known Impact	No Further Review Required
PA Department of Conservation and Natural Resources	No Known Impact	No Further Review Required
PA Fish and Boat Commission	No Known Impact	No Further Review Required
U.S. Fish and Wildlife Service	No Known Impact	No Further Review Required

As summarized above, Pennsylvania Natural Diversity Inventory (PNDI) records indicate no known impacts to threatened and endangered species and/or special concern species and resources within the project area. Therefore, based on the information you provided, no further coordination is required with the jurisdictional agencies. This response does not reflect potential agency concerns regarding impacts to other ecological resources, such as wetlands.

### Winchester Thurston School



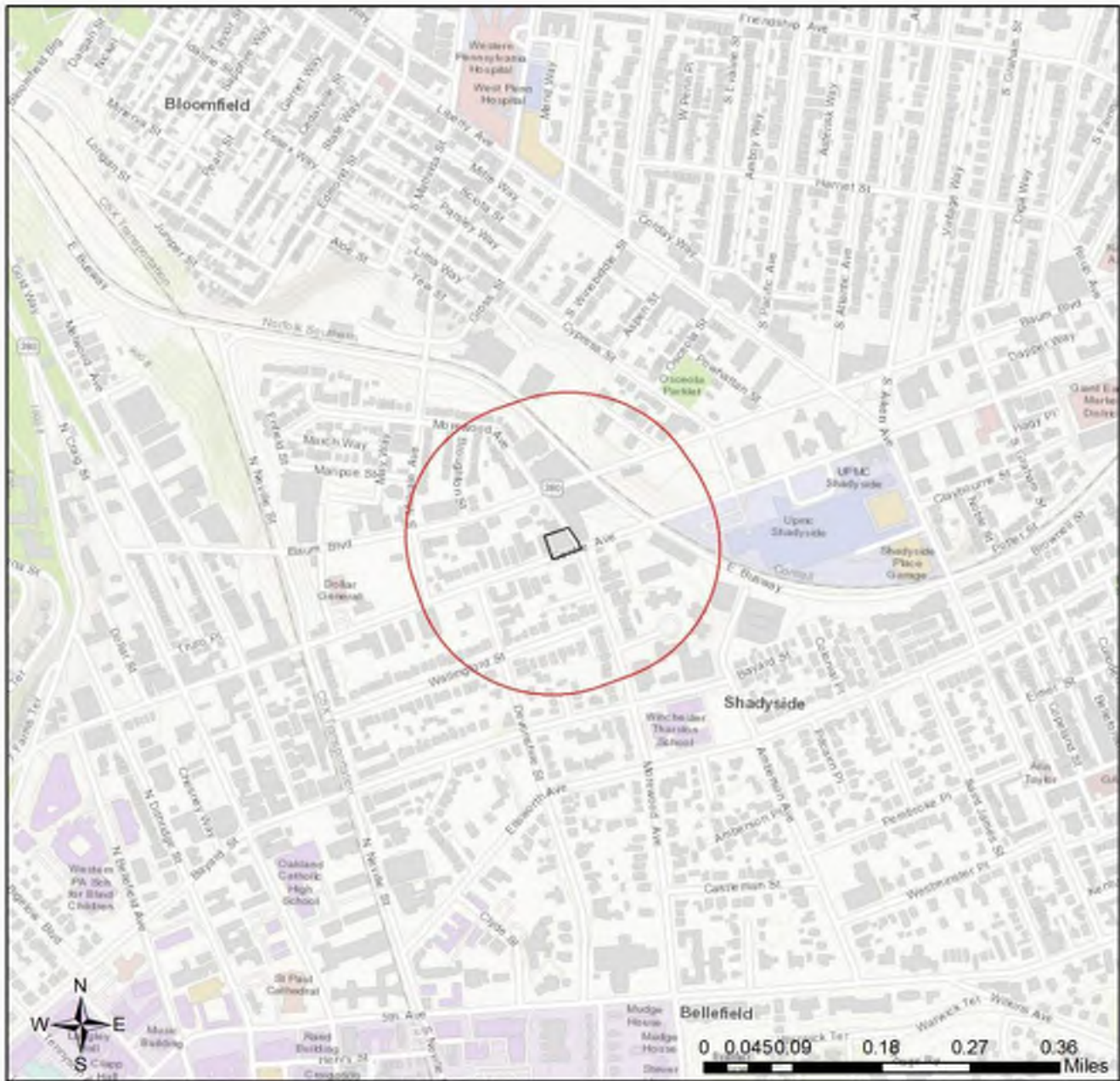
- Project Boundary
- Buffered Project Boundary



Service Layer Credits: Source: Esri, Maxar, GeoEye, Earthstar Geographics, CNES/Airbus DS, USDA, USGS, AeroGRID, IGN, and the GIS User Community  
Esri, HERE, Garmin, (c) OpenStreetMap contributors, and the GIS user community  
Sources: Esri, HERE, Garmin, Intermap, increment P Corp., GEBCO, USGS, FAO, NPS, NRCAN, GeoBase, IGN, Kadaster NL, Ordnance Survey, Esri Japan, METI, Esri China



### Winchester Thurston School



- Project Boundary
- Buffered Project Boundary

Service Layer Credits: Sources: Esri, HERE, Garmin, Intermap, increment P Corp., GEBCO, USGS, FAO, NPS, NRCAN, GeoBase, IGN, Kadaster NL, Ordnance Survey, Esri Japan, METI, Esri China (Hong Kong), (c) OpenStreetMap contributors, and the GIS User Community



## RESPONSE TO QUESTION(S) ASKED

**Q1:** The proposed project is in the range of the Indiana bat. Describe how the project will affect bat habitat (forests, woodlots and trees) and indicate what measures will be taken in consideration of this. Round acreages up to the nearest acre (e.g., 0.2 acres = 1 acre).

**Your answer is:** No forests, woodlots or trees will be affected by the project.

**Q2:** Is tree removal, tree cutting or forest clearing of 40 acres or more necessary to implement all aspects of this project?

**Your answer is:** No

### 3. AGENCY COMMENTS

Regardless of whether a DEP permit is necessary for this proposed project, any potential impacts to threatened and endangered species and/or special concern species and resources must be resolved with the appropriate jurisdictional agency. In some cases, a permit or authorization from the jurisdictional agency may be needed if adverse impacts to these species and habitats cannot be avoided.

These agency determinations and responses are **valid for two years** (from the date of the review), and are based on the project information that was provided, including the exact project location; the project type, description, and features; and any responses to questions that were generated during this search. If any of the following change: 1) project location, 2) project size or configuration, 3) project type, or 4) responses to the questions that were asked during the online review, the results of this review are not valid, and the review must be searched again via the PNDI Environmental Review Tool and resubmitted to the jurisdictional agencies. The PNDI tool is a primary screening tool, and a desktop review may reveal more or fewer impacts than what is listed on this PNDI receipt. The jurisdictional agencies **strongly advise against** conducting surveys for the species listed on the receipt prior to consultation with the agencies.

#### PA Game Commission

##### RESPONSE:

No impact is anticipated to threatened and endangered species and/or special concern species and resources.

#### PA Department of Conservation and Natural Resources

##### RESPONSE:

No impact is anticipated to threatened and endangered species and/or special concern species and resources.

#### PA Fish and Boat Commission

##### RESPONSE:

No impact is anticipated to threatened and endangered species and/or special concern species and resources.

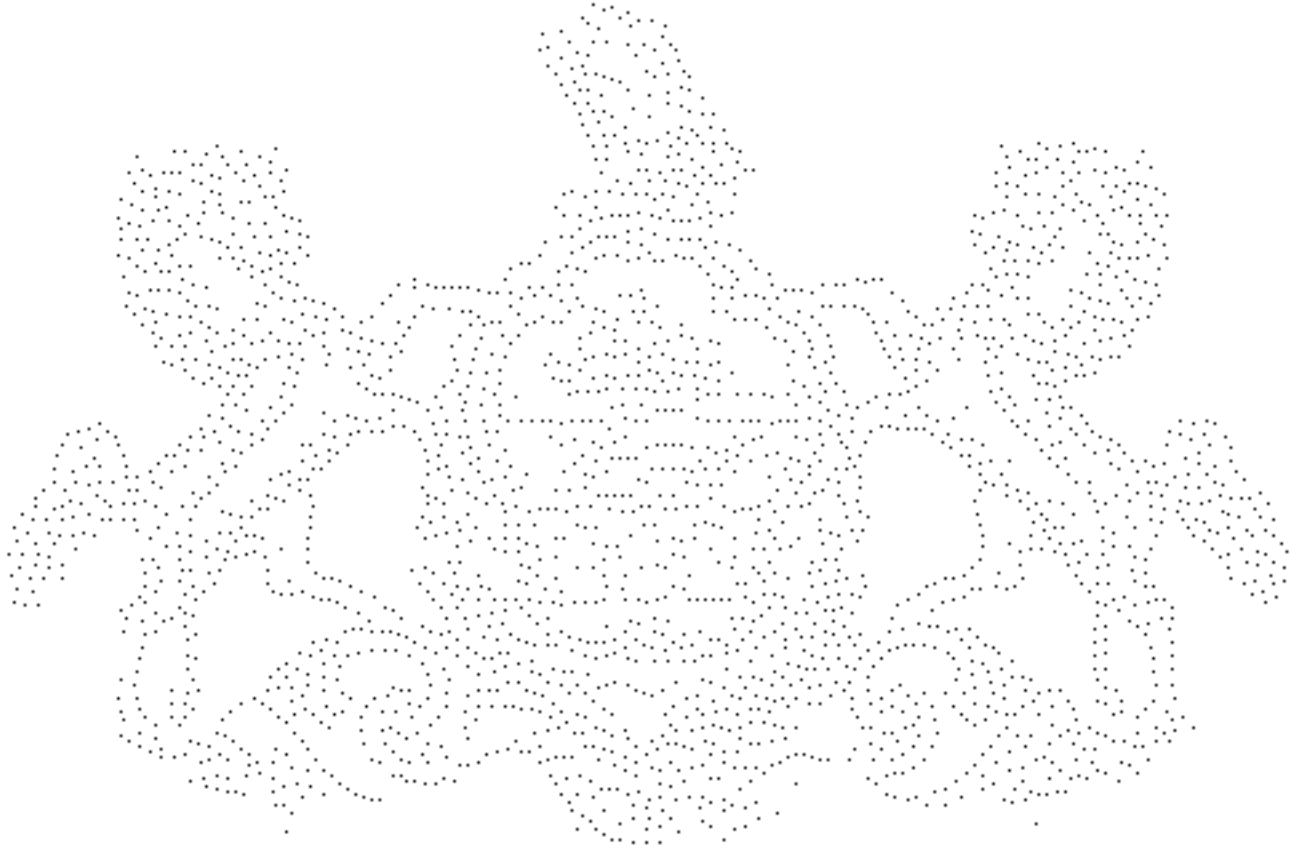
#### U.S. Fish and Wildlife Service

##### RESPONSE:

No impacts to **federally** listed or proposed species are anticipated. Therefore, no further consultation/coordination under the Endangered Species Act (87 Stat. 884, as amended; 16 U.S.C. 1531 et seq. is required. Because no take of federally listed species is anticipated, none is authorized. This response does not reflect potential Fish and Wildlife Service concerns under the Fish and Wildlife Coordination Act or other authorities.

## 4. DEP INFORMATION

The Pa Department of Environmental Protection (DEP) requires that a signed copy of this receipt, along with any required documentation from jurisdictional agencies concerning resolution of potential impacts, be submitted with applications for permits requiring PNDI review. Two review options are available to permit applicants for handling PNDI coordination in conjunction with DEP's permit review process involving either T&E Species or species of special concern. Under sequential review, the permit applicant performs a PNDI screening and completes all coordination with the appropriate jurisdictional agencies prior to submitting the permit application. The applicant will include with its application, both a PNDI receipt and/or a clearance letter from the jurisdictional agency if the PNDI Receipt shows a Potential Impact to a species or the applicant chooses to obtain letters directly from the jurisdictional agencies. Under concurrent review, DEP, where feasible, will allow technical review of the permit to occur concurrently with the T&E species consultation with the jurisdictional agency. The applicant must still supply a copy of the PNDI Receipt with its permit application. The PNDI Receipt should also be submitted to the appropriate agency according to directions on the PNDI Receipt. The applicant and the jurisdictional agency will work together to resolve the potential impact(s). See the DEP PNDI policy at <https://conservationexplorer.dcnr.pa.gov/content/resources>.



## 5. ADDITIONAL INFORMATION

The PNDI environmental review website is a preliminary screening tool. There are often delays in updating species status classifications. Because the proposed status represents the best available information regarding the conservation status of the species, state jurisdictional agency staff give the proposed statuses at least the same consideration as the current legal status. If surveys or further information reveal that a threatened and endangered and/or special concern species and resources exist in your project area, contact the appropriate jurisdictional agency/agencies immediately to identify and resolve any impacts.

For a list of species known to occur in the county where your project is located, please see the species lists by county found on the PA Natural Heritage Program (PNHP) home page ([www.naturalheritage.state.pa.us](http://www.naturalheritage.state.pa.us)). Also note that the PNDI Environmental Review Tool only contains information about species occurrences that have actually been reported to the PNHP.

## 6. AGENCY CONTACT INFORMATION

### PA Department of Conservation and Natural Resources

Bureau of Forestry, Ecological Services Section  
400 Market Street, PO Box 8552  
Harrisburg, PA 17105-8552  
Email: [RA-HeritageReview@pa.gov](mailto:RA-HeritageReview@pa.gov)

### PA Fish and Boat Commission

Division of Environmental Services  
595 E. Rolling Ridge Dr., Bellefonte, PA 16823  
Email: [RA-FBPACENOTIFY@pa.gov](mailto:RA-FBPACENOTIFY@pa.gov)

### U.S. Fish and Wildlife Service

Pennsylvania Field Office  
Endangered Species Section  
110 Radnor Rd; Suite 101  
State College, PA 16801  
Email: [IR1\\_ESPenn@fws.gov](mailto:IR1_ESPenn@fws.gov)

NO Faxes Please

### PA Game Commission

Bureau of Wildlife Habitat Management  
Division of Environmental Planning and Habitat Protection  
2001 Elmerton Avenue, Harrisburg, PA 17110-9797  
Email: [RA-PGC\\_PNDI@pa.gov](mailto:RA-PGC_PNDI@pa.gov)  
NO Faxes Please

## 7. PROJECT CONTACT INFORMATION

Name: Craig Jubic  
Company/Business Name: The Gateway Engineers, Inc.  
Address: 100 McMorris Road  
City, State, Zip: Pittsburgh, PA 15205  
Phone: ( 412 ) 409-2313 Fax: ( 412 ) 921-9960  
Email: cjubic@gatewayengineers.com

## 8. CERTIFICATION

I certify that ALL of the project information contained in this receipt (including project location, project size/configuration, project type, answers to questions) is true, accurate and complete. In addition, if the project type, location, size or configuration changes, or if the answers to any questions that were asked during this online review change, I agree to re-do the online environmental review.

  
\_\_\_\_\_  
applicant/project proponent signature

10/14/2021  
\_\_\_\_\_  
date

EXHIBIT E.

**Plot Plan**

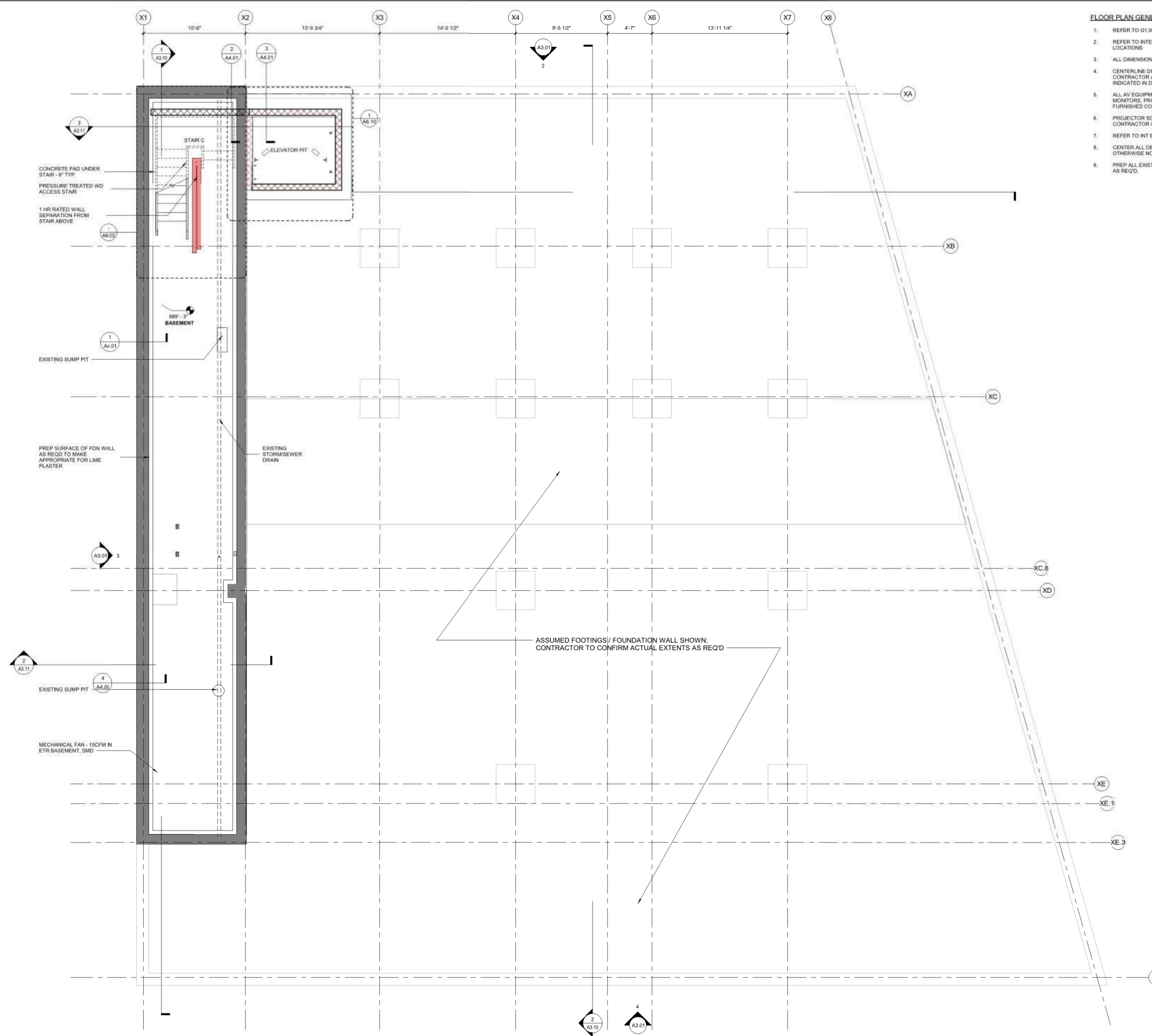






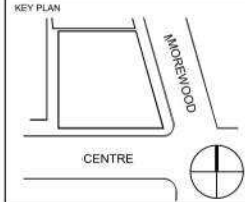






- FLOOR PLAN GENERAL NOTES:**
1. REFER TO G.1.00 FOR ABBREVIATIONS AND SYMBOLS
  2. REFER TO INTERIOR ELEVATIONS FOR DISPLAY AND ART LOCATIONS
  3. ALL DIMENSIONS TAKEN FROM FINISH FACE OF WALL U.O.N.
  4. CENTERLINE DIMENSIONS SHALL BE ESTABLISHED BY CONTRACTOR AT CENTER OF STRUCTURAL MEMBER INDICATED IN DRAWINGS
  5. ALL AV EQUIPMENT, INCLUDING BUT NOT LIMITED TO LCD MONITORS, PROJECTOR, SMARTBOARDS ARE OWNER FURNISHED CONTRACTOR INSTALLED (OFCI)
  6. PROJECTOR SCREENS ARE CONTRACTOR FURNISHED CONTRACTOR INSTALLED (CFCI)
  7. REFER TO INT ELEV FOR CASEWORK DETAILS
  8. CENTER ALL DEVICES/SENSORS IN CEILING TILES UNLESS OTHERWISE NOTED
  9. PREP ALL EXIST. COLUMNS, STRUCTURE, AND DECK FOR PAINT AS REQ'D.

**WINCHESTER THURSTON SCHOOL  
CENTRE AVENUE PROJECT**  
4951 Centre Ave  
PITTSBURGH, PA 15213



LEGEND

**PERMIT SUBMISSION**

NO	REVISION	DATE



**AnnBehaArchitects**  
33 Kingston Street Boston, MA 02111  
617.338.3000 617.482.6067

Job Number: 02026.01  
Project: CENTRE AVENUE PROJECT  
Drawn By: XFL Checked By: AA  
Date: 09/03/2021  
Scale: As indicated

Drawing Title:  
**BASEMENT PLAN**

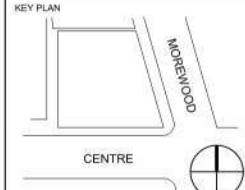
**A1.00**

9/2/2021 9:40:35 AM



- FLOOR PLAN GENERAL NOTES:**
1. REFER TO G1.00 FOR ABBREVIATIONS AND SYMBOLS
  2. REFER TO INTERIOR ELEVATIONS FOR DISPLAY AND ART LOCATIONS
  3. ALL DIMENSIONS TAKEN FROM FINISH FACE OF WALL U.O.N.
  4. CENTERLINE DIMENSIONS SHALL BE ESTABLISHED BY CONTRACTOR AT CENTER OF STRUCTURAL MEMBER INDICATED IN DRAWINGS
  5. ALL AV EQUIPMENT, INCLUDING BUT NOT LIMITED TO LCD MONITORS, PROJECTOR, SMARTBOARDS ARE OWNER FURNISHED CONTRACTOR INSTALLED (OFCI)
  6. PROJECTOR SCREENS ARE CONTRACTOR FURNISHED CONTRACTOR INSTALLED (CFI)
  7. REFER TO INT ELEV FOR CASEWORK DETAILS
  8. CENTER ALL DEVICES/SENSORS IN CEILING TILES UNLESS OTHERWISE NOTED
  9. PREP ALL EXIST. COLUMNS, STRUCTURE, AND DECK FOR PAINT AS REQ'D.

**WINCHESTER THURSTON SCHOOL CENTRE AVENUE PROJECT**  
 4951 Centre Ave  
 PITTSBURGH, PA 15213



- LEGEND**
- FIRE RATED PARTITION
  - FIRE RATED CMU WALL
  - NEW PARTITION, REFER TO A5.00
  - CARD READER LOCATION. SEE HARDWARE SCHEDULE AND SC DWGS FOR ADDITIONAL INFO.
  - ITEMS OVERHEAD
  - CONT. AVS LOCATION IN EXTERIOR LINE FOR ENERGY DOCUMENTATION

- GENERAL COMMENTS:**
1. EXISTING STRUCTURAL GRID - BASED OFF OF BUILDING SCAN. CONTRACTOR TO CONFIRM DIMENSIONS.
  2. ALL EXPOSED STRUCTURE TO BE PAINTED?

**PERMIT SUBMISSION**

NO.	REVISION	DATE



**AnnBeha Architects**  
 33 Kingston Street Boston, MA 02111  
 617.338.3000 617.482.6067

Job Number: 02026.01  
 Project: CENTRE AVENUE PROJECT  
 Drawn By: XFL Checked By: AA  
 Date: 09/03/2021  
 Scale: As indicated  
 Drawing Title:

FIRST FLOOR PLAN

**A1.01**

09/03/2021 9:41:19 AM

**1 FIRST FLOOR**  
 1/4" = 1'-0"





FLOOR PLAN GENERAL NOTES:

1. REFER TO G1.00 FOR ABBREVIATIONS AND SYMBOLS
2. REFER TO INTERIOR ELEVATIONS FOR DISPLAY AND ART LOCATIONS
3. ALL DIMENSIONS TAKEN FROM FINISH FACE OF WALL U.O.N.
4. CENTERLINE DIMENSIONS SHALL BE ESTABLISHED BY CONTRACTOR AT CENTER OF STRUCTURAL MEMBER INDICATED IN DRAWINGS
5. ALL AV EQUIPMENT, INCLUDING BUT NOT LIMITED TO LCD MONITORS, PROJECTOR, SMARTBOARDS ARE OWNER FURNISHED CONTRACTOR INSTALLED (OFCI)
6. PROJECTOR SCREENS ARE CONTRACTOR FURNISHED CONTRACTOR INSTALLED (CFCI)
7. REFER TO INT ELEV FOR CASEWORK DETAILS
8. CENTER ALL DEVICES/SENSORS IN CEILING TILES UNLESS OTHERWISE NOTED
9. PREP ALL EXIST. COLUMNS, STRUCTURE, AND DECK FOR PAINT AS REQ'D.

KEY PLAN



LEGEND

- FIRE RATED PARTITION
- FIRE RATED CURTAIN WALL
- NEW PARTITION, REFER TO A5.00
- CARD READER LOCATION, SEE HARDWARE SCHEDULE AND SC DWGS FOR ADDITIONAL INFO
- ITEMS OVERHEAD
- CONT. AVS LOCATION IN EXTERIOR LINE FOR ENERPHT DOCUMENTATION

GENERAL COMMENTS:

1. EXISTING STRUCTURAL GRID - BASED OFF OF BUILDING SCAL, CONTRACTOR TO CONFIRM DIMENSIONS
2. ALL EXPOSED STRUCTURE TO BE PAINTED!

PERMIT SUBMISSION

NO.	REVISION	DATE

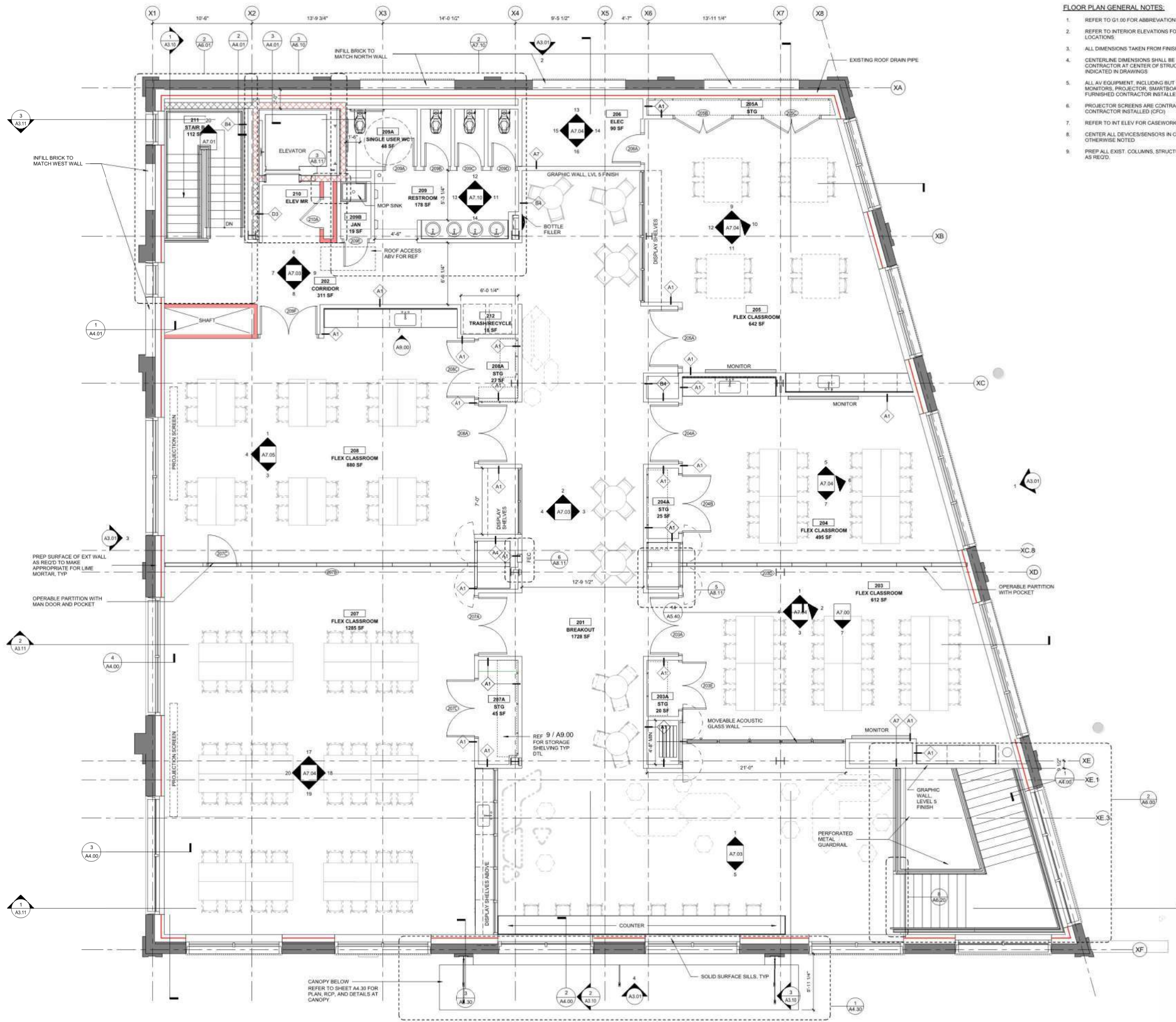


**AnnBeha Architects**  
33 Kingston Street Boston, MA 02111  
617.338.3000 617.482.6067

Job Number: 02026.01  
Project: CENTRE AVENUE PROJECT  
Drawn By: XFL Checked By: AA  
Date: 09/03/2021  
Scale: As indicated  
Drawing Title:

SECOND FLOOR PLAN

**A1.02**

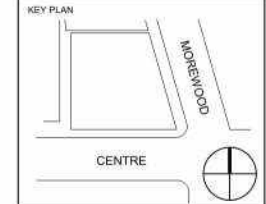


1 SECOND FLOOR  
1/4" = 1'-0"



WINCHESTER  
THURSTON SCHOOL  
CENTRE AVENUE PROJECT

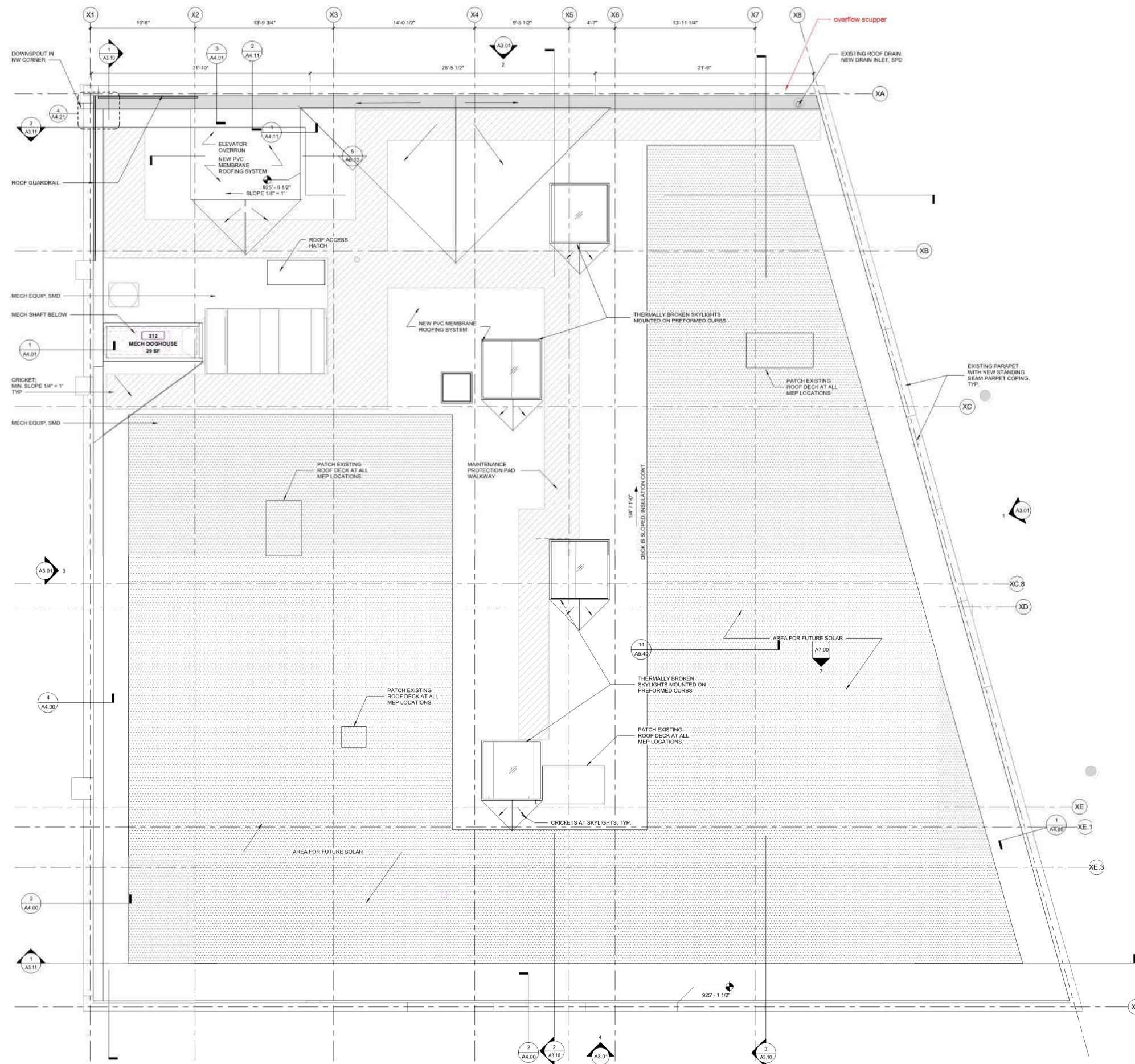
4951 Centre Ave  
PITTSBURGH, PA 15213



LEGEND

FLOOR PLAN GENERAL NOTES:

1. REFER TO G1.00 FOR ABBREVIATIONS AND SYMBOLS.
2. REFER TO INTERIOR ELEVATIONS FOR DISPLAY AND ART LOCATIONS.
3. ALL DIMENSIONS TAKEN FROM FINISH FACE OF WALL U.O.N.
4. CENTERLINE DIMENSIONS SHALL BE ESTABLISHED BY CONTRACTOR AT CENTER OF STRUCTURAL MEMBER INDICATED IN DRAWINGS.
5. ALL AV EQUIPMENT, INCLUDING BUT NOT LIMITED TO LCD MONITORS, PROJECTOR, SMARTBOARDS ARE OWNER FURNISHED CONTRACTOR INSTALLED (OFCI).
6. PROJECTOR SCREENS ARE CONTRACTOR FURNISHED CONTRACTOR INSTALLED (CFCI).
7. REFER TO INT ELEV FOR CASEWORK DETAILS.
8. CENTER ALL DEVICES/SENSORS IN CEILING TILES UNLESS OTHERWISE NOTED.
9. PREP ALL EXIST. COLUMNS, STRUCTURE, AND DECK FOR PAINT AS REQ'D.



1 ROOF  
1/4" = 1'-0"

PERMIT  
SUBMISSION

NO.	REVISION	DATE



**AnnBeha Architects**  
33 Kingston Street Boston, MA 02111  
617.338.3000 617.482.6067

Job Number: 02026.01  
Project: CENTRE AVENUE PROJECT  
Drawn By: Author Checked By: Checker  
Date: 09/03/2021  
Scale: As indicated  
Drawing Title:

ROOF PLAN

**A1.03**

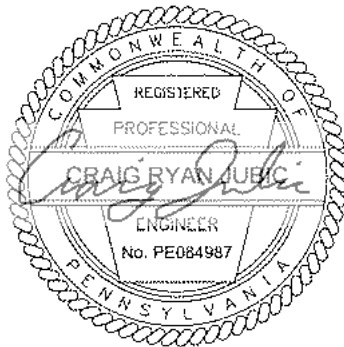
EXHIBIT F.

**Flow Calculations (Signed and Sealed)**

Winchester Thurston School		
Sewage Capacity Calculations		
Pipe Diameter (per Flow Monitoring Report) =	15	in
Upstream Invert Elevation =	881.50	
Downstream Invert Elevation =	874.52	
Pipe Length =	291.7	ft
Slope (per 1913 as-built) =	2.40	%
Mannings n =	0.015	(TCP)
<b>Design Capacity</b>		
Sewer Type (Combined/Separate)	Combined	
Peaking Factor	3.5	
Peak Hydraulic Capacity (Using Mannings Equation full-flow)	8.67	cfs
	5,603,568	GPD
Average Hydraulic Capacity (Peak Capacity divided by Peaking Factor)	1,601,020	GPD
<b>Present Flows - MH051N005</b>		
Present Peak Flows (Flow data, refer to "Drnach Peak Flow Measurement")	0.078	cfs
	50,413	GPD
Present Average Flows (Present Peak Flow ÷ Peaking Factor)	0.022	cfs
	14,404	GPD
<b>Project Flow (Net Flow)</b>		
Project Flow (Net Flow)	565	GPD
<b>Projected Flows</b>		
Projected Peak [(Present Peak Flow + Project Flow) x 1.05]	53,527	*GPD
Projected Average (Projected Peak Flow divided by Peaking Factor)	15,293	*GPD

\*Projected Flows are less than the Design Capacity

	Input
	Output



# Peak Flow Measurement

# DE

Date: 10/1/2021 Manhole ID: MH051N005

Location: 4923 Centre Avenue Street Name: Centre Avenue

Latitude: 40° 27'13.92" N Longitude: 79° 56' 43.35 W

Surveyor: Don Withers



Measured Readings		
Time	Recorded Depth (in)	
6:03 AM	0.9	
6:15 AM	0.82	
6:32 AM	0.54	
7:46 AM	0.85	
7:00 AM	0.76	

Line Size (in): 15 Material: TerraCotta

Drnach Environmental, Inc.  
471 Weigles Hill Road  
Elizabeth PA 15037  
phone: 412 - 384 - 5400





# Channel Report

## Sewer Design Capacity - MH051N005

### Circular

Diameter (ft) = 1.25

Invert Elev (ft) = 881.50

Slope (%) = 2.40

N-Value = 0.015

### Calculations

Compute by: Known Depth

Known Depth (ft) = 1.25 ← FULL FLOW

### Highlighted

Depth (ft) = 1.25

Q (cfs) = 8.670

Area (sqft) = 1.23

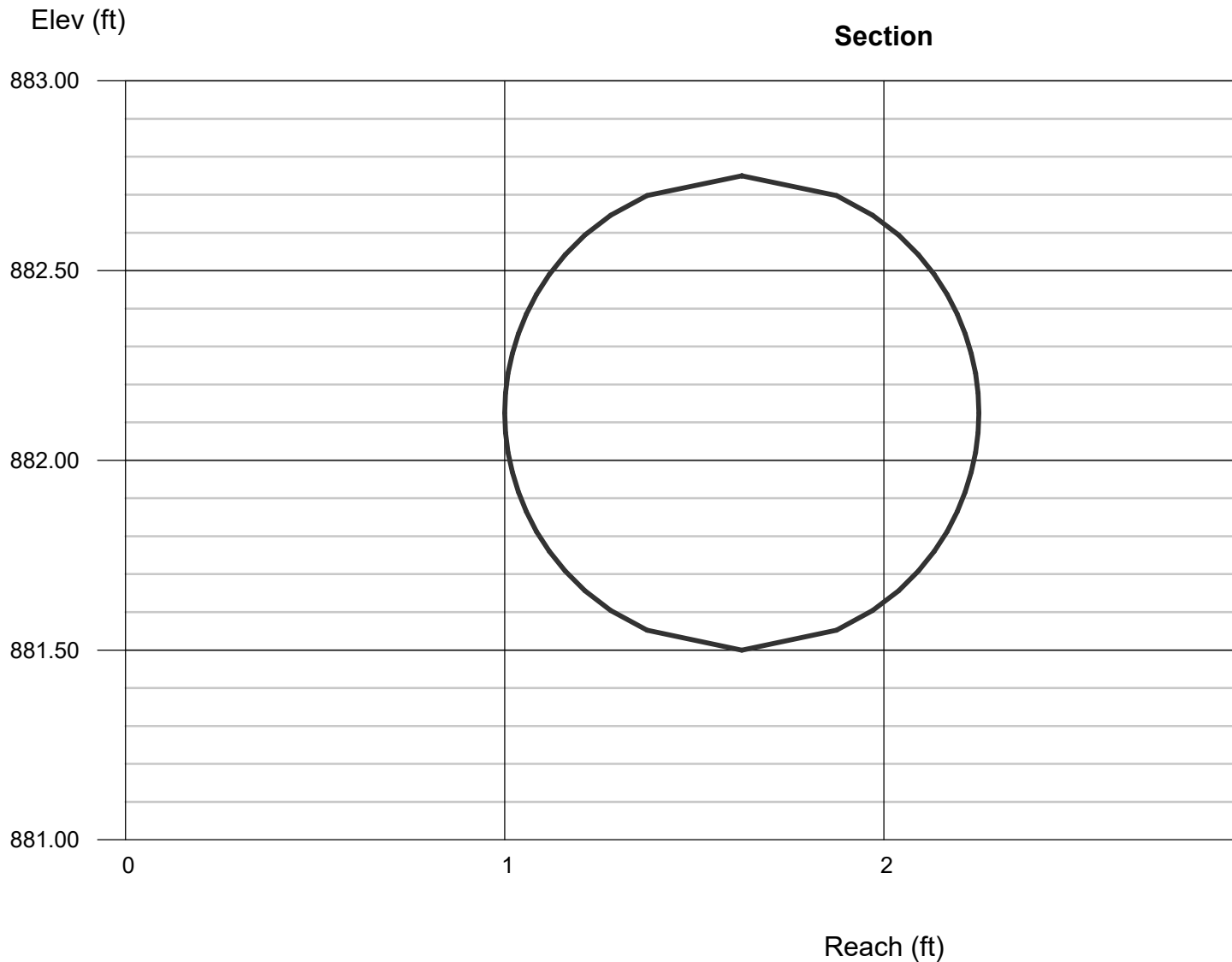
Velocity (ft/s) = 7.06

Wetted Perim (ft) = 3.93

Crit Depth, Yc (ft) = 1.15

Top Width (ft) = 0.00

EGL (ft) = 2.03



# Channel Report

## Sewer Present Flow - MH051N005

### Circular

Diameter (ft) = 1.25

Invert Elev (ft) = 881.50

Slope (%) = 2.40

N-Value = 0.015

### Calculations

Compute by: Known Depth

Known Depth (ft) = 0.08 ← 1" FLOW DEPTH

### Highlighted

Depth (ft) = 0.08

Q (cfs) = 0.078

Area (sqft) = 0.04

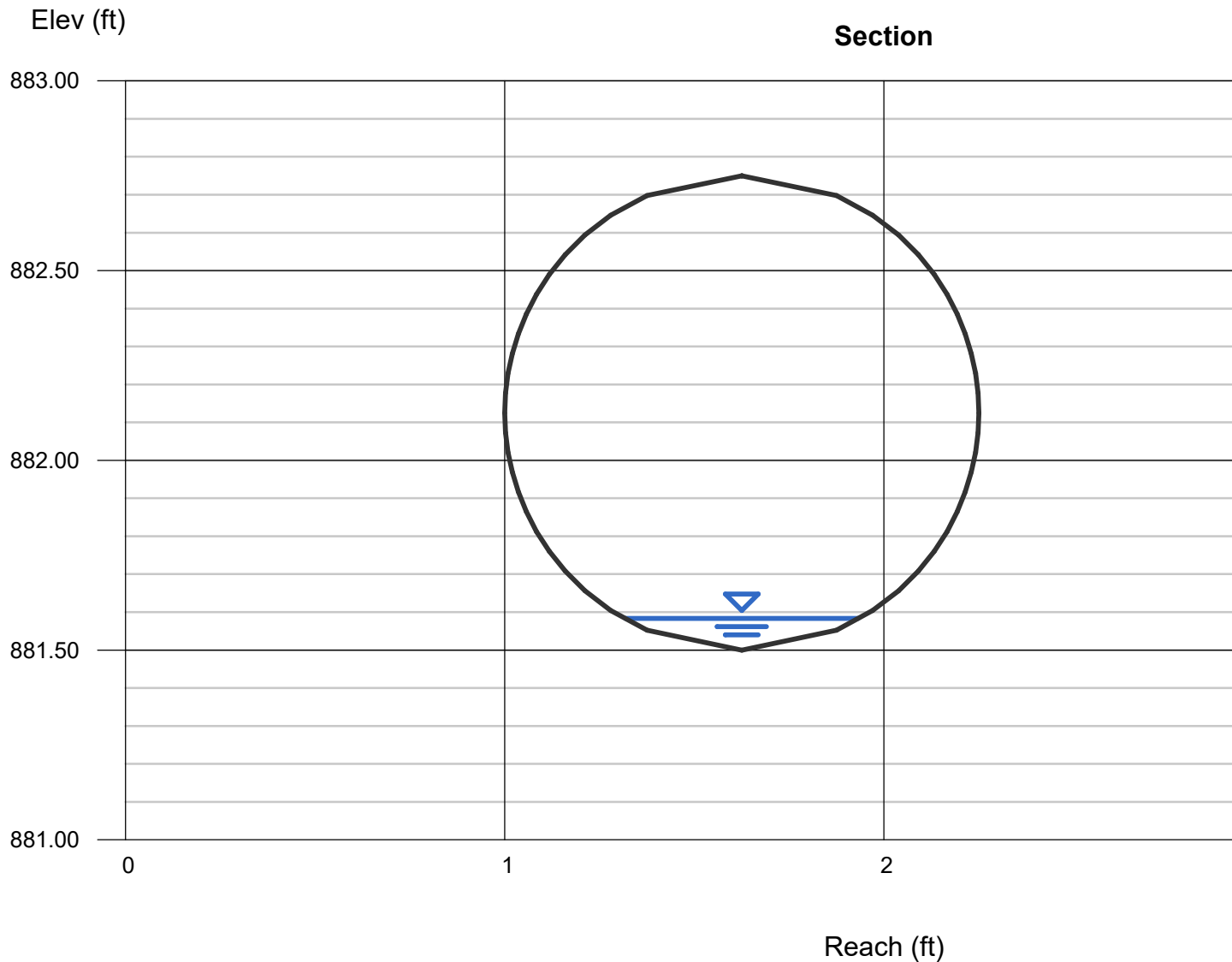
Velocity (ft/s) = 2.20

Wetted Perim (ft) = 0.66

Crit Depth, Yc (ft) = 0.11

Top Width (ft) = 0.63

EGL (ft) = 0.16









**EXHIBIT G.**

**Sewage Facilities Planning Module – Component 3 – Sewage Collection  
and Treatment Facilities**

## SEWAGE FACILITIES PLANNING MODULE

### Component 3. Sewage Collection and Treatment Facilities

*(Return completed module package to appropriate municipality)*

#### DEP USE ONLY

DEP CODE #	CLIENT ID #	SITE ID #	APS ID #	AUTH ID #

This planning module component is used to fulfill the planning requirements of Act 537 for the following types of projects: (1) a subdivision to be served by sewage collection, conveyance or treatment facilities, (2) a tap-in to an existing collection system with flows on a lot of 2 EDU's or more, or (3) the construction of, or modification to, wastewater collection, conveyance or treatment facilities that will require DEP to issue or modify a Clean Streams Law permit. Planning for any project that will require DEP to issue or modify a permit cannot be processed by a delegated agency. Delegated agencies must send their projects to DEP for final planning approval.

This component, along with any other documents specified in the cover letter, must be completed and submitted to the municipality with jurisdiction over the project site for review and approval. All required documentation must be attached for the Sewage Facilities Planning Module to be complete. Refer to the instructions for help in completing this component.

**REVIEW FEES:** Amendments to the Sewage Facilities Act established fees to be paid by the developer for review of planning modules for land development. These fees may vary depending on the approving agency for the project (DEP or delegated local agency). Please see section R and the instructions for more information on these fees.

**NOTE:** All projects must complete Sections A through I, and Sections O through R. Complete Sections J, K, L, M and/or N if applicable or marked .

### A. PROJECT INFORMATION (See Section A of instructions)

1. Project Name Winchester Thurston School

---

2. Brief Project Description Redevelopment of an existing building to a day school for students.

### B. CLIENT (MUNICIPALITY) INFORMATION (See Section B of instructions)

Municipality Name	County	City	Boro	Twp
Pittsburgh	Allegheny	<input checked="" type="checkbox"/>	<input type="checkbox"/>	<input type="checkbox"/>
Municipality Contact Individual - Last Name	First Name	MI	Suffix	Title
Battistone	Marti			Senior Environmental Planner
Additional Individual Last Name	First Name	MI	Suffix	Title
Municipality Mailing Address Line 1		Mailing Address Line 2		
Department of City Planning		200 Ross Street, Suite 4		
Address Last Line -- City		State	ZIP+4	
Pittsburgh		PA	15219	
Area Code + Phone + Ext.	FAX (optional)	Email (optional)		
412-255-2516				



**C. SITE INFORMATION** (See Section C of instructions)

**Site (Land Development or Project) Name**

Winchester Thurston School

Site Location Line 1  
4951 Centre Avenue

Site Location Line 2

Site Location Last Line -- City  
Pittsburgh

State  
PA

ZIP+4  
15213

Latitude  
40°27'15.33"

Longitude  
79°56'41.47"

Detailed Written Directions to Site From Bigelow Boulevard, continue onto N. Craig Street. Turn left onto Baum Boulevard and then turn right onto Morewood Avenue. The project site will be on the right at the intersection with Centre Avenue.

Description of Site Redevelopment of an existing building to a day school for students.

**Site Contact (Developer/Owner)**

Last Name

First Name

MI

Suffix

Phone

Ext.

Charney

John

412-578-3757

Site Contact Title

Site Contact Firm (if none, leave blank)

Assistant Head for Operations

Winchester Thurston School

FAX

Email

charneyj@winchesterthurston.org

Mailing Address Line 1

Mailing Address Line 2

555 Morewood Avenue

Mailing Address Last Line -- City

State

ZIP+4

Pittsburgh

PA

15213

**D. PROJECT CONSULTANT INFORMATION** (See Section D of instructions)

Last Name

First Name

MI

Suffix

Martin

James

J

P.E.

Title

Consulting Firm Name

Project Manager

The Gateway Engineers, Inc.

Mailing Address Line 1

Mailing Address Line 2

100 McMorris Road

Address Last Line -- City

State

ZIP+4

Country

Pittsburgh

PA

15205

U.S.

Email

Area Code + Phone

Ext.

Area Code + FAX

martin@gatewayengineers.com

412-921-4030

175

**E. AVAILABILITY OF DRINKING WATER SUPPLY**

The project will be provided with drinking water from the following source: (Check appropriate box)

- Individual wells or cisterns.
- A proposed public water supply.
- An existing public water supply.

If existing public water supply is to be used, provide the name of the water company and attach documentation from the water company stating that it will serve the project.

Name of water company: Pittsburgh Water and Sewer Authority (PWSA)

**F. PROJECT NARRATIVE** (See Section F of instructions)

- A narrative has been prepared as described in Section F of the instructions and is attached.

The applicant may choose to include additional information beyond that required by Section F of the instructions.

**G. PROPOSED WASTEWATER DISPOSAL FACILITIES** (See Section G of instructions)

Check all boxes that apply, and provide information on collection, conveyance and treatment facilities and EDU's served. This information will be used to determine consistency with Chapter 93 (relating to wastewater treatment requirements).

**1. COLLECTION SYSTEM**

a. Check appropriate box concerning collection system

- New collection system       Pump Station       Force Main  
 Grinder pump(s)       Extension to existing collection system       Expansion of existing facility

Clean Streams Law Permit Number \_\_\_\_\_

b. Answer questions below on collection system

Number of EDU's and proposed connections to be served by collection system. EDU's 1,4

Connections 2 (1 storm, 1 sanitary)

Name of:

existing collection or conveyance system Centre Avenue - 15" TerraCotta

owner PWSA

existing interceptor Allegheny River Interceptor (A-22)

owner ALCOSAN

**2. WASTEWATER TREATMENT FACILITY**

Check all boxes that apply, and provide information on collection, conveyance and treatment facilities and EDU's served. This information will be used to determine consistency with Chapter(s) 91 (relating to general provisions), 92 (relating to national Pollution Discharge Elimination System permitting, monitoring and compliance) and 93 (relating to water quality standards).

a. Check appropriate box and provide requested information concerning the treatment facility

- New facility     Existing facility     Upgrade of existing facility     Expansion of existing facility

Name of existing facility ALCOSAN

NPDES Permit Number for existing facility PA0025984

Clean Streams Law Permit Number \_\_\_\_\_

Location of discharge point for a new facility. Latitude 40° 28' 34" N Longitude 80° 02' 44" W

b. The following certification statement must be completed and signed by the wastewater treatment facility permittee or their representative.

As an authorized representative of the permittee, I confirm that the ALCOSAN  
(Name from above) sewage treatment facilities can accept sewage flows from this project without adversely affecting the facility's ability to achieve all applicable technology and water quality based effluent limits (see Section I) and conditions contained in the NPDES permit identified above.

Name of Permittee Agency, Authority, Municipality ALCOSAN

Name of Responsible Agent Joseph A. Sparsanig, P.E.

Agent Signature [Signature] Date 11-9-21

(Also see Section I. 4.)

**G. PROPOSED WASTEWATER DISPOSAL FACILITIES** (Continued)

**3. PLOT PLAN**

The following information is to be submitted on a plot plan of the proposed subdivision.

- a. Existing and proposed buildings.
- b. Lot lines and lot sizes.
- c. Adjacent lots.
- d. Remainder of tract.
- e. Existing and proposed sewerage facilities. Plot location of discharge point, land application field, spray field, COLDS, or LVCOLDS if a new facility is proposed.
- f. Show tap-in or extension to the point of connection to existing collection system (if applicable).
- g. Existing and proposed water supplies and surface water (wells, springs, ponds, streams, etc.)
- h. Existing and proposed rights-of-way.
- i. Existing and proposed buildings, streets, roadways, access roads, etc.
- j. Any designated recreational or open space area.
- k. Wetlands - from National Wetland Inventory Mapping and USGS Hydric Soils Mapping.
- l. Flood plains or Flood prone areas, floodways, (Federal Flood Insurance Mapping)
- m. Prime Agricultural Land.
- n. Any other facilities (pipelines, power lines, etc.)
- o. Orientation to north.
- p. Locations of all site testing activities (soil profile test pits, slope measurements, permeability test sites, background sampling, etc. (if applicable).
- q. Soils types and boundaries when a land based system is proposed.
- r. Topographic lines with elevations when a land based system is proposed

**4. WETLAND PROTECTION**

YES NO

- a.   Are there wetlands in the project area? If yes, ensure these areas appear on the plot plan as shown in the mapping or through on-site delineation.
- b.   Are there any construction activities (encroachments, or obstructions) proposed in, along, or through the wetlands? If yes, Identify any proposed encroachments on wetlands and identify whether a General Permit or a full encroachment permit will be required. If a full permit is required, address time and cost impacts on the project. Note that wetland encroachments should be avoided where feasible. Also note that a feasible alternative **MUST BE SELECTED** to an identified encroachment on an exceptional value wetland as defined in Chapter 105. Identify any project impacts on streams classified as HQ or EV and address impacts of the permitting requirements of said encroachments on the project.

**5. PRIME AGRICULTURAL LAND PROTECTION**

YES NO

- Will the project involve the disturbance of prime agricultural lands?  
If yes, coordinate with local officials to resolve any conflicts with the local prime agricultural land protection program. The project must be consistent with such municipal programs before the sewage facilities planning module package may be submitted to DEP.  
If no, prime agricultural land protection is not a factor to this project.
- Have prime agricultural land protection issues been settled?

**6. HISTORIC PRESERVATION ACT**

YES NO

- Sufficient documentation is attached to confirm that this project is consistent with DEP Technical Guidance 012-0700-001 *Implementation of the PA State History Code* (available online at the DEP website at [www.dep.state.pa.us](http://www.dep.state.pa.us), select "subject" then select "technical guidance"). As a minimum this includes copies of the completed Cultural Resources Notice

(CRN), a return receipt for its submission to the PHMC and the PHMC review letter.

**7. PROTECTION OF RARE, ENDANGERED OR THREATENED SPECIES**

Check one:

- The "Pennsylvania Natural Diversity Inventory (PNDI) Project Environmental Review Receipt" resulting from my search of the PNDI database and all supporting documentation from jurisdictional agencies (when necessary) is/are attached.
- A completed "Pennsylvania Natural Diversity Inventory (PNDI) Project Planning & Environmental Review Form," (PNDI Form) available at [www.naturalheritage.state.pa.us](http://www.naturalheritage.state.pa.us), and all required supporting documentation is attached. I request DEP staff to complete the required PNDI search for my project. I realize that my planning module will be considered incomplete upon submission to the Department and that the DEP review will not begin, and that processing of my planning module will be delayed, until a "PNDI Project Environmental Review Receipt" and all supporting documentation from jurisdictional agencies (when necessary) is/are received by DEP.

Applicant or Consultant Initials \_\_\_\_\_.

**H. ALTERNATIVE SEWAGE FACILITIES ANALYSIS** (See Section H of instructions)

- An alternative sewage facilities analysis has been prepared as described in Section H of the attached instructions and is attached to this component.  
The applicant may choose to include additional information beyond that required by Section H of the attached instructions.

**I. COMPLIANCE WITH WATER QUALITY STANDARDS AND EFFLUENT LIMITATIONS** (See Section I of instructions) (Check and complete all that apply.)

**1. Waters designated for Special Protection**

- The proposed project will result in a new or increased discharge into special protection waters as identified in Title 25, Pennsylvania Code, Chapter 93. The Social or Economic Justification (SEJ) required by Section 93.4c. is attached.

**2. Pennsylvania Waters Designated As Impaired**

- The proposed project will result in a new or increased discharge of a pollutant into waters that DEP has identified as being impaired by that pollutant. A pre-planning meeting was held with the appropriate DEP regional office staff to discuss water quality based discharge limitations.

**3. Interstate and International Waters**

- The proposed project will result in a new or increased discharge into interstate or international waters. A pre-planning meeting was held with the appropriate DEP regional office staff to discuss effluent limitations necessary to meet the requirements of the interstate or international compact.

**4. Tributaries To The Chesapeake Bay**

- The proposed project result in a new or increased discharge of sewage into a tributary to the Chesapeake Bay. This proposal for a new sewage treatment facility or new flows to an existing facility includes total nitrogen and total phosphorus in the following amounts: \_\_\_\_\_ pounds of TN per year, and \_\_\_\_\_ pounds of TP per year. Based on the process design and effluent limits, the total nitrogen treatment capacity of the wastewater treatment facility is \_\_\_\_\_ pounds per year and the total phosphorus capacity is \_\_\_\_\_ pounds per year as determined by the wastewater treatment facility permittee. The permittee has determined that the additional TN and TP to be contributed by this project (as modified by credits and/or offsets to be provided) will not cause the discharge to exceed the annual total mass limits for these parameters. Documentation of compliance with nutrient allocations is attached.

Name of Permittee Agency, Authority, Municipality \_\_\_\_\_

Initials of Responsible Agent (See Section G 2.b) \_\_\_\_\_

See *Special Instructions* (Form 3800-FM-BPNPSM0353-1) for additional information on Chesapeake Bay watershed requirements.

**J. CHAPTER 94 CONSISTENCY DETERMINATION** (See Section J of instructions)

Projects that propose the use of existing municipal collection, conveyance or wastewater treatment facilities, or the construction of collection and conveyance facilities to be served by existing municipal wastewater treatment facilities must be consistent with the requirements of Title 25, Chapter 94 (relating to Municipal Wasteload Management). If not previously included in Section F, include a general map showing the path of the sewage to the treatment facility. If more than one municipality or authority will be affected by the project, please obtain the information required in this section for each. Additional sheets may be attached for this purpose.

1. Project Flows 565 gpd
2. Total Sewage Flows to Facilities (pathway from point of origin through treatment plant)

When providing "treatment facilities" sewage flows, use Annual Average Daily Flow for "average" and Maximum Monthly Average Daily Flow for "peak" in all cases. For "peak flows" in "collection" and "conveyance" facilities, indicate whether these flows are "peak hourly flow" or "peak instantaneous flow" and how this figure was derived (i.e., metered, measured, estimated, etc.).

- a. Enter average and peak sewage flows for each proposed or existing facility as designed or permitted.
- b. Enter the average and peak sewage flows for the most restrictive sections of the existing sewage facilities.
- c. Enter the average and peak sewage flows, projected for 5 years (2 years for pump stations) through the most restrictive sections of the existing sewage facilities. Include existing, proposed (this project) and future project (other approved projects) flows.

To complete the table, refer to the instructions, Section J.

	a. Design and/or Permitted Capacity (gpd)		b. Present Flows (gpd)		c. Projected Flows in 5 years (gpd) (2 years for P.S.)	
	Average	Peak	Average	Peak	Average	Peak
Collection	1601020	5603568	14404	50413	15293	53527
Conveyance		31,200,000	8,810,000	10,800,000	8,920,000	10,930,000
Treatment	209,300,000	250,000,000	190,200,000	250,000,000	219,000,000	275,000,000

3. Collection and Conveyance Facilities

The questions below are to be answered by the sewer authority, municipality, or agency responsible for completing the Chapter 94 report for the collection and conveyance facilities. These questions should be answered in coordination with the latest Chapter 94 annual report and the above table. The individual(s) signing below must be legally authorized to make representation for the organization.

YES NO

- a.   This project proposes sewer extensions or tap-ins. Will these actions create a hydraulic overload within five years on any existing collection or conveyance facilities that are part of the system?

If yes, this sewage facilities planning module will not be accepted for review by the municipality, delegated local agency and/or DEP until all inconsistencies with Chapter 94 are resolved or unless there is an approved Corrective Action Plan (CAP) granting an allocation for this project. A letter granting allocations to this project under the CAP must be attached to the module package.

If no, a representative of the sewer authority, municipality, or agency responsible for completing the Chapter 94 report for the collection and conveyance facilities must sign below to indicate that the collection and conveyance facilities have adequate capacity and are able to provide service to the proposed development in accordance with both §71.53(d)(3) and Chapter 94 requirements and that this proposal will not affect that status.

b. Collection System

Name of Agency, Authority, Municipality PWSA \_\_\_\_\_  
 Name of Responsible Agent Barry King, PE, PMP  
 Agent Signature [Signature] Date 10/26/2021



**J. CHAPTER 94 CONSISTENCY DETERMINATION** (See Section J of instructions)

c. Conveyance System

Name of Agency, Authority, Municipality ALCOSAN

Name of Responsible Agent Joseph A. Sparbanie, P.E.

Agent Signature [Signature]

Date 11-9-21

4. Treatment Facility

The questions below are to be answered by a representative of the facility permittee in coordination with the information in the table and the latest Chapter 94 report. The individual signing below must be legally authorized to make representation for the organization.

YES NO

- a.  YES  NO This project proposes the use of an existing wastewater treatment plant for the disposal of sewage. Will this action create a hydraulic or organic overload within 5 years at that facility?

If yes, this planning module for sewage facilities will not be reviewed by the municipality, delegated local agency and/or DEP until this inconsistency with Chapter 94 is resolved or unless there is an approved CAP granting an allocation for this project. A letter granting allocations to this project under the CAP must be attached to the planning module.

If no, the treatment facility permittee must sign below to indicate that this facility has adequate treatment capacity and is able to provide wastewater treatment services for the proposed development in accordance with both §71.53(d)(3) and Chapter 94 requirements and that this proposal will not impact that status.

- b. Name of Agency, Authority, Municipality ALCOSAN

Name of Responsible Agent Joseph A. Sparbanie, P.E.

Agent Signature [Signature]

Date 11-9-21

**K. TREATMENT AND DISPOSAL OPTIONS** (See Section K of instructions)

This section is for land development projects that propose construction of wastewater treatment facilities. Please note that, since these projects require permits issued by DEP, these projects may **NOT** receive final planning approval from a delegated local agency. Delegated local agencies must send these projects to DEP for final planning approval.

Check the appropriate box indicating the selected treatment and disposal option.

- 1. Spray irrigation (other than individual residential spray systems (IRSIS)) or other land application is proposed, and the information requested in Section K.1. of the planning module instructions are attached.
- 2. Recycle and reuse is proposed and the information requested in Section K-2 of the planning module instructions is attached.
- 3. A discharge to a dry stream channel is proposed, and the information requested in Section K.3. of the planning module instructions are attached.
- 4. A discharge to a perennial surface water body is proposed, and the information requested in Section K.4. of the planning module instructions are attached.

**L. PERMEABILITY TESTING** (See Section L of instructions)

- The information required in Section L of the instructions is attached.

**M. PRELIMINARY HYDROGEOLOGIC STUDY** (See Section M of instructions)

- The information required in Section M of the instructions is attached.

**N. DETAILED HYDROGEOLOGIC STUDY** (See Section N of instructions)

The detailed hydrogeologic information required in Section N. of the instructions is attached.

**O. SEWAGE MANAGEMENT** (See Section O of instructions)

**(1-3 for completion by the developer(project sponser), 4-5 for completion by the non-municipal facility agent and 6 for completion by the municipality)**

Yes No

1.   Is connection to, or construction of, a DEP permitted, non-municipal sewage facility or a local agency permitted, community onlot sewage facility proposed.

If Yes, respond to the following questions, attach the supporting analysis, and an evaluation of the options available to assure long-term proper operation and maintenance of the proposed non-municipal facilities. If No, skip the remainder of Section O.

2. Project Flows \_\_\_\_\_ gpd

Yes No

3.   Is the use of nutrient credits or offsets a part of this project?

If yes, attach a letter of intent to purchase the necessary credits and describe the assurance that these credits and offsets will be available for the remaining design life of the non-municipal sewage facility;

**(For completion by non-municipal facility agent)**

4. Collection and Conveyance Facilities

The questions below are to be answered by the organization/individual responsible for the non-municipal collection and conveyance facilities. The individual(s) signing below must be legally authorized to make representation for the organization.

Yes No

- a.   If this project proposes sewer extensions or tap-ins, will these actions create a hydraulic overload on any existing collection or conveyance facilities that are part of the system?

If yes, this sewage facilities planning module will not be accepted for review by the municipality, delegated local agency and/or DEP until this issue is resolved.

If no, a representative of the organization responsible for the collection and conveyance facilities must sign below to indicate that the collection and conveyance facilities have adequate capacity and are able to provide service to the proposed development in accordance with Chapter 71 §71.53(d)(3) and that this proposal will not affect that status.

- b. Collection System

Name of Responsible Organization \_\_\_\_\_

Name of Responsible Agent \_\_\_\_\_

Agent Signature \_\_\_\_\_

Date \_\_\_\_\_

- c. Conveyance System

Name of Responsible Organization \_\_\_\_\_

Name of Responsible Agent \_\_\_\_\_

Agent Signature \_\_\_\_\_

Date \_\_\_\_\_

5. Treatment Facility

The questions below are to be answered by a representative of the facility permittee. The individual signing below must be legally authorized to make representation for the organization.

Yes No

- a.   If this project proposes the use of an existing non-municipal wastewater treatment plant for the disposal of sewage, will this action create a hydraulic or organic overload at that facility?

If yes, this planning module for sewage facilities will not be reviewed by the municipality, delegated local agency and/or DEP until this issue is resolved.

If no, the treatment facility permittee must sign below to indicate that this facility has adequate treatment capacity and is able to provide wastewater treatment services for the proposed development in accordance with §71.53(d)(3) and that this proposal will not impact that status.

- b. Name of Facility \_\_\_\_\_  
Name of Responsible Agent \_\_\_\_\_  
Agent Signature \_\_\_\_\_  
Date \_\_\_\_\_

**(For completion by the municipality)**

6.  The **SELECTED OPTION** necessary to assure long-term proper operation and maintenance of the proposed non-municipal facilities is clearly identified with documentation attached in the planning module package.

**P. PUBLIC NOTIFICATION REQUIREMENT** (See Section P of instructions)

This section must be completed to determine if the applicant will be required to publish facts about the project in a newspaper of general circulation to provide a chance for the general public to comment on proposed new land development projects. This notice may be provided by the applicant or the applicant's agent, the municipality or the local agency by publication in a newspaper of general circulation within the municipality affected. Where an applicant or an applicant's agent provides the required notice for publication, the applicant or applicant's agent shall notify the municipality or local agency and the municipality and local agency will be relieved of the obligation to publish. The required content of the publication notice is found in Section P of the instructions.

To complete this section, each of the following questions must be answered with a "yes" or "no". Newspaper publication is required if any of the following are answered "yes".

**Yes No**

1.   Does the project propose the construction of a sewage treatment facility ?  
2.   Will the project change the flow at an existing sewage treatment facility by more than 50,000 gallons per day?  
3.   Will the project result in a public expenditure for the sewage facilities portion of the project in excess of \$100,000?  
4.   Will the project lead to a major modification of the existing municipal administrative organizations within the municipal government?  
5.   Will the project require the establishment of *new* municipal administrative organizations within the municipal government?  
6.   Will the project result in a subdivision of 50 lots or more? (onlot sewage disposal only)  
7.   Does the project involve a major change in established growth projections?  
8.   Does the project involve a different land use pattern than that established in the municipality's Official Sewage Plan?

**P. PUBLIC NOTIFICATION REQUIREMENT cont'd.** (See Section P of instructions)

- 9.   Does the project involve the use of large volume onlot sewage disposal systems (Flow > 10,000 gpd)?
- 10.   Does the project require resolution of a conflict between the proposed alternative and consistency requirements contained in §71.21(a)(5)(i), (ii), (iii)?
- 11.   Will sewage facilities discharge into high quality or exceptional value waters?
- Attached is a copy of:
  - the public notice,
  - all comments received as a result of the notice,
  - the municipal response to these comments.
- No comments were received. A copy of the public notice is attached.

**Q. FALSE SWEARING STATEMENT** (See Section Q of instructions)

I verify that the statements made in this component are true and correct to the best of my knowledge, information and belief. I understand that false statements in this component are made subject to the penalties of 18 PA C.S.A. §4904 relating to unsworn falsification to authorities.

James J. Martin

Name (Print)



Signature

Project Manager

10-14-21

Title

Date

100 McMorris Road, Pittsburgh, PA 15205

412-921-4030 x 175

Address

Telephone Number

**R. REVIEW FEE** (See Section R of instructions)

The Sewage Facilities Act establishes a fee for the DEP planning module review. DEP will calculate the review fee for the project and invoice the project sponsor **OR** the project sponsor may attach a self-calculated fee payment to the planning module prior to submission of the planning package to DEP. (Since the fee and fee collection procedures may vary if a "delegated local agency" is conducting the review, the project sponsor should contact the "delegated local agency" to determine these details.) Check the appropriate box.

- I request DEP calculate the review fee for my project and send me an invoice for the correct amount. I understand DEP's review of my project will not begin until DEP receives the correct review fee from me for the project.
- I have calculated the review fee for my project using the formula found below and the review fee guidance in the instructions. I have attached a check or money order in the amount of \$71 payable to "Commonwealth of PA, DEP". Include DEP code number on check. I understand DEP will not begin review of my project unless it receives the fee and determines the fee is correct. If the fee is incorrect, DEP will return my check or money order, send me an invoice for the correct amount. I understand DEP review will NOT begin until I have submitted the correct fee.
- I request to be exempt from the DEP planning module review fee because this planning module creates **only** one new lot and is the **only** lot subdivided from a parcel of land as that land existed on December 14, 1995. I realize that subdivision of a second lot from this parcel of land shall disqualify me from this review fee exemption. I am furnishing the following deed reference information in support of my fee exemption.

County Recorder of Deeds for \_\_\_\_\_ County, Pennsylvania

Deed Volume \_\_\_\_\_ Book Number \_\_\_\_\_

Page Number \_\_\_\_\_ Date Recorded \_\_\_\_\_

**R. REVIEW FEE** (continued)

Formula:

1. For a new collection system (with or without a Clean Streams Law Permit), a collection system extension, or individual tap-ins to an existing collection system use this formula.

$$\#1.41 \quad \text{Lots (or EDUs)} \times \$50.00 = \$ 71$$

The fee is based upon:

- The number of lots created or number of EDUs whichever is higher.
  - For community sewer system projects, one EDU is equal to a sewage flow of 400 gallons per day.
2. For a surface or subsurface discharge system, use the appropriate one of these formulae.

- A. A new surface discharge greater than 2000 gpd will use a flat fee:

$$\begin{aligned} & \$ 1,500 \text{ per submittal (non-municipal)} \\ & \$ 500 \text{ per submittal (municipal)} \end{aligned}$$

- B. An increase in an existing surface discharge will use:

$$\# \quad \text{Lots (or EDUs)} \times \$35.00 = \$$$

to a maximum of \$ 1,500 per submittal (non-municipal) or \$ 500 per submittal (municipal)

The fee is based upon:

- The number of lots created or number of EDUs whichever is higher.
  - For community sewage system projects one EDU is equal to a sewage flow of 400 gallons per day.
  - For non-single family residential projects, EDUs are calculated using projected population figures
- C. A sub-surface discharge system that requires a permit under The Clean Streams Law will use a flat fee:
- $$\begin{aligned} & \$ 1,500 \text{ per submittal (non-municipal)} \\ & \$ 500 \text{ per submittal (municipal)} \end{aligned}$$





November 9, 2021

James J. Martin, P.E.  
The Gateway Engineers, Inc.  
100 McMorris Road  
Pittsburgh, PA 15205

**Members of the Board**

Corey O'Connor  
Chair Person

Harry Readshaw  
Sylvia C. Wilson  
Shannah Tharp-Gilliam, Ph.D.  
Jack Shea  
John Weinstein

Arietta Scott Williams  
Executive Director

Douglas A. Jackson, P.E.  
Director  
Operations & Maintenance

Michelle M. Buys, P.E.  
Director  
Environmental Compliance

Kimberly N. Kennedy, P.E.  
Director  
Engineering & Construction

Karen Fantoni, CPA, CGMA  
Director  
Finance

Michael Lichte, P.E.  
Director  
Regional Conveyance

Jeanne K. Clark  
Director  
Governmental Affairs

Joseph Vallarian  
Director  
Communications

Julie Motley-Williams  
Director  
Administration

**Re: Winchester Thurston School  
4951 Centre Avenue, Pittsburgh, PA 15213  
PA DEP Sewage Facilities Planning Module  
ALCOSAN Regulator Structure A-22-00**

Dear Mr. Martin:

We have reviewed the Component 3 Planning Module for the referenced project to be located in the City of Pittsburgh. The project will generate a peak flow of 565 GPD in the ALCOSAN Allegheny River Interceptor and Woods Run Treatment Plant.

The capacity at the A-22-00 Diversion Structure is approximately 31.2 MGD. The estimated peak dry weather flow is approximately 10.8 MGD. Dry weather capacity exists for this connection. However, the ALCOSAN Allegheny River Interceptor and the Woods Run Treatment Plant do not have the capacity for the flows generated during wet weather periods. This limitation will be addressed as ALCOSAN implements its Clean Water Plan.

ALCOSAN has completed and signed the sections required in the Component 3 module and requests that this letter be made part of the planning module submission. If you have any questions regarding this matter, please contact me at 412-732-8046.

Sincerely,

**ALLEGHENY COUNTY SANITARY AUTHORITY**

Joseph A. Sparbanie, P.E.  
Civil Engineer

Attachment

cc: T. Dean (w/o attachment) B. King/ PWSA (w/o attachment)  
D. Thornton (w/o attachment) T. Flanagan/ PaDEP (w/o attachment)  
M. Lichte (w/o attachment) F. Fields/ ACHD (w/o attachment)



A FULL-SERVICE CIVIL ENGINEERING FIRM

THE GATEWAY ENGINEERS, INC.

100 MCMORRIS ROAD

PITTSBURGH, PA 15205

412-921-8030 PHONE

412-921-9960 FAX

[www.GatewayEngineers.com](http://www.GatewayEngineers.com)

October 28, 2021

C-41144-0001

Allegheny County Sanitary Authority

3300 Preble Avenue

Pittsburgh, PA 15233-1092

Attn: Michael Lichte, P.E., Manager of Planning

Subject: Winchester Thurston School  
City of Pittsburgh, Allegheny County, Pennsylvania  
Request to Review Sewage Facilities Planning Module

RECEIVED  
11/1/21

Dear Mr. Lichte,

Please find enclosed the Sewage Facilities Planning Module Component 3 along with the project plan and various other supportive information for the proposed *Winchester Thurston School* project located at 4951 Centre Avenue in the 8<sup>th</sup> Ward of the City of Pittsburgh. The enclosed Sewage Facilities Planning Module estimates the flow produced by the day school equipped with offices, classrooms, and restrooms.

Sewage from *Winchester Thurston School* will flow into the PWSA owned combined sewer system in Centre Avenue, to the Allegheny River Interceptor Sewer (A-22), and to the Woods Run Wastewater Treatment Plant where it will receive final treatment. The total proposed sanitary flow is estimated to be 565 GPD or 1.4 EDU's.

We are hereby respectfully requesting that you review the enclosed information and if acceptable please sign and date the indicated spots within the Component 3, complete the indicated portion of the total sewage flow table within the Component 3, and return the completed forms to our office so that the process may continue.

Thank you for your anticipated cooperation in this matter and if any questions should arise, please do not hesitate to call me at 412-409-2313 or email me at [cjubic@gatewayengineers.com](mailto:cjubic@gatewayengineers.com).

Sincerely,  
The Gateway Engineers, Inc.

Craig R. Jubic, P.E.  
Engineer

Enclosures

9/13/2021

Mr. Thomas Flanagan  
PA Department of Environmental Protection  
Clean Water Program  
400 Waterfront Drive  
Pittsburgh, PA 15222

Subject: Tap Allocation Authorization Letter

Dear Mr. Flanagan:

Please be advised that the Pittsburgh Water and Sewer Authority (PWSA) authorizes the tap allocations associated with the following Project:

Project Name:	4951 Centre Ave. (Winchester Thurston School)
Project Address:	4951 Centre Ave. Pittsburgh, PA 15213
Net Flow, gpd:	565
EDU's, 400gpd/EDU:	1.4125

Our review is based on information provided by others under the assumption that this information was accurate and complete. Should you have any questions, please do not hesitate to contact me directly at x9996 or [mbridges@pgh2o.com](mailto:mbridges@pgh2o.com).

Sincerely,

Midori Bridges  
Cooperative Education Intern

cc: Barry King, PE, PMP – PWSA (via email)  
Kate Mechler, PE – PWSA (via email)  
Robert Herring, PE, PMP – PWSA (via email)  
Craig Jubic - Applicant (via email)  
Regis Ryan – DEP (via email)  
eBuilder – Filing System (via email)

10/26/21

Craig Jubic  
Gateway Engineers  
100 McMorris Road  
Pittsburgh, PA 15205

Subject: Sewage Facilities Planning Module (SFPM)  
Approval for Collection System Flows  
Project Name: 4951 Centre Ave. (Project)  
PWSA Project No.: 20015.04

Dear Craig:

Pursuant to your request, we have reviewed the SFPM and determined that the Project will not create a dry-weather hydraulic overload within the next five (5) years for any collection facility owned by the Pittsburgh Water and Sewer Authority (PWSA). We have enclosed for your use the electronically signed "Section J – Chapter 94 Consistency Determination". Please be advised that this approval is limited to the collection system portion of the SFPM.

Our review was based on information provided by others under the assumption that this information was accurate and complete. Should you have any questions, please do not hesitate to contact me directly at x9996 or mbridges@pgh2o.com.

Sincerely,



Midori Bridges  
Cooperative Education Intern

Digitally signed by Midori Bridges  
DN: cn=Midori Bridges, c=US,  
o=PWSA, ou=Engineering,  
email=mbridges@pgh2o.com  
Reason: I am approving this document  
Date: 2021.10.26 14:49:56 -0400

**Enclosures**

cc: Barry King, P.E. – PWSA (via email)  
Kate Mechler, P.E. – PWSA (via email)  
Robert Herring, P.E. – PWSA (via email)  
Thomas Flanagan – DEP (via email)  
eBuilder – Filing System (via email)







**J. CHAPTER 94 CONSISTENCY DETERMINATION** (See Section J of instructions)

Projects that propose the use of existing municipal collection, conveyance or wastewater treatment facilities, or the construction of collection and conveyance facilities to be served by existing municipal wastewater treatment facilities must be consistent with the requirements of Title 25, Chapter 94 (relating to Municipal Wasteload Management). If not previously included in Section F, include a general map showing the path of the sewage to the treatment facility. If more than one municipality or authority will be affected by the project, please obtain the information required in this section for each. Additional sheets may be attached for this purpose.

1. Project Flows 565 gpd
2. Total Sewage Flows to Facilities (pathway from point of origin through treatment plant)

When providing "treatment facilities" sewage flows, use Annual Average Daily Flow for "average" and Maximum Monthly Average Daily Flow for "peak" in all cases. For "peak flows" in "collection" and "conveyance" facilities, indicate whether these flows are "peak hourly flow" or "peak instantaneous flow" and how this figure was derived (i.e., metered, measured, estimated, etc.).

- a. Enter average and peak sewage flows for each proposed or existing facility as designed or permitted.
- b. Enter the average and peak sewage flows for the most restrictive sections of the existing sewage facilities.
- c. Enter the average and peak sewage flows, projected for 5 years (2 years for pump stations) through the most restrictive sections of the existing sewage facilities. Include existing, proposed (this project) and future project (other approved projects) flows.

To complete the table, refer to the instructions, Section J.

	a. Design and/or Permitted Capacity (gpd)		b. Present Flows (gpd)		c. Projected Flows in 5 years (gpd) (2 years for P.S.)	
	Average	Peak	Average	Peak	Average	Peak
<b>Collection</b>	1601020	5603568	14404	50413	15293	53527
<b>Conveyance</b>						
<b>Treatment</b>						

3. Collection and Conveyance Facilities

The questions below are to be answered by the sewer authority, municipality, or agency responsible for completing the Chapter 94 report for the collection and conveyance facilities. These questions should be answered in coordination with the latest Chapter 94 annual report and the above table. The individual(s) signing below must be legally authorized to make representation for the organization.

YES NO

- a.  YES  NO This project proposes sewer extensions or tap-ins. Will these actions create a hydraulic overload within five years on any existing collection or conveyance facilities that are part of the system?

If yes, this sewage facilities planning module will not be accepted for review by the municipality, delegated local agency and/or DEP until all inconsistencies with Chapter 94 are resolved or unless there is an approved Corrective Action Plan (CAP) granting an allocation for this project. A letter granting allocations to this project under the CAP must be attached to the module package.

If no, a representative of the sewer authority, municipality, or agency responsible for completing the Chapter 94 report for the collection and conveyance facilities must sign below to indicate that the collection and conveyance facilities have adequate capacity and are able to provide service to the proposed development in accordance with both §71.53(d)(3) and Chapter 94 requirements and that this proposal will not affect that status.

b. Collection System

Name of Agency, Authority, Municipality PWSA \_\_\_\_\_

Name of Responsible Agent Barry King, PE, PMP

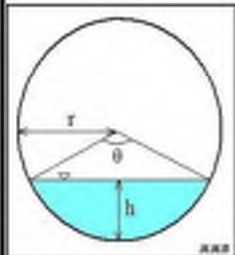
Agent Signature  Date 10/26/2021

**Sewage Facilities Planning Module**  
**Chapter 94 Consistency Determination**  
**Hydraulic Calculations Spreadsheet for Peak Present Flow Measurements**

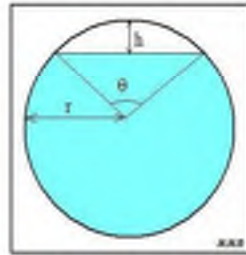
**PROJECT NAME:** 4951 Centre Ave.  
**PWSA PROJECT NUMBER:** 20015.04  
**PWSA REVIEWER:** Midori Bridges  
**DATE:** October 21, 2021

**LEGEND:** Input Data Output Data

**Section A: Manning Equation for Partially Filled Pipes**



Partially Full Pipe Flow Parameters  
(Less Than Half Full)



Partially Full Pipe Flow Parameters  
(More Than Half Full)

Variable	Units	Description
Q	ft <sup>3</sup>	Volumetric flowrate
n	Unitless	Manning Roughness Coeff.
A	ft <sup>2</sup>	Cross-Sectional Area of Flow
R	ft	Hydraulic Radius
S	ft/ft	Slope of Hydraulic Grade Line
P	ft	Wetted Perimeter of "A"
r	ft	Radius
h	ft	Depth of Flow or Headspace
θ	radians	Central Angle

$$Q = \left(\frac{1.49}{n}\right) \times A \times R^{2/3} \times S^{1/2}$$

$$R = \frac{A}{P}$$

$$\theta = 2 \times \cos^{-1} \left( \frac{r-h}{r} \right)$$

$$A_{<50\% \text{ Full}} = \frac{r^2(\theta - \sin \theta)}{2}$$

OR

$$A_{>50\% \text{ Full}} = \pi \times r^2 \times \frac{r^2(\theta - \sin \theta)}{2}$$

$$P_{<50\% \text{ Full}} = r \times \theta$$

$$P_{>50\% \text{ Full}} = (2 \times \pi \times r) - (r \times \theta)$$

**Section B: Data for Calculations**

Peaking Factor, P.F.	
Sanitary Sewers	3
Combined Sewers	3.5

Proposed Project Flows		
Variable	Value	Units
Q <sub>o</sub>	565	gpd

Variable	Value	Units
Material	VCP	
n	0.015	unitless
S	0.024	ft/ft
h	0.080	ft
D	1.25	ft
P.F.	3.5	unitless

**Section C: Calculations for Design and/or Permitted Capacities**

Variable	Description	Definition
Q <sub>d, avg</sub>	Design Capacity, Average	= full pipe flow conditions / peaking factor
Q <sub>d, peak</sub>	Design Capacity, Peak	full pipe flow conditions

Design Capacity, Average		
Variable	Value	Unit
Q <sub>d, avg</sub>	1,605,911	gpd

Design Capacity, Peak		
Variable	Value	Unit
D	1.250	ft
r	0.625	ft
A	1.227	ft <sup>2</sup>
P	3.927	ft
R	0.313	ft
Q <sub>d, peak</sub>	9	cfs
Q <sub>d, peak</sub>	5,620,687	gpd

#### Section D: Calculations for Present Flows

Variable	Description	Definition
Q <sub>ex, avg</sub>	Present Flows, Average	= Q <sub>ex, peak</sub> / P.F.
Q <sub>ex, peak</sub>	Present Flows, Peak	existing flow conditions per site investigations

Present Flows, Average		
Variable	Value	Unit
Q <sub>ex, avg</sub>	13,049	gpd

Present Flows, Peak		
Variable	Value	Unit
D	1.250	ft
r	0.625	ft
θ	1.02	rad
h/D	0.064	ft/ft
A	0.03	ft <sup>2</sup>
P	0.64	ft
R	0.052	ft
Q <sub>ex, peak</sub>	0	cfs
Q <sub>ex, peak</sub>	45,671	gpd

#### Section E: Calculations for Projected Flows in Five (5) Years

Variable	Description	Definition
Q <sub>proj, avg</sub>	Projected Flows in Five (5) Years, Average	= Q <sub>proj, peak</sub> ÷ P.F.
Q <sub>proj, peak</sub>	Projected Flows in Five (5) Years, Peak	= (Q <sub>ex, peak</sub> + Q <sub>p</sub> ) x 1.05

Projected Flow Calculations		
Variable	Value	Unit
Q <sub>proj, avg</sub>	13,871	gpd
Q <sub>proj, peak</sub>	48,548	gpd

#### Section F: Compare Results with Applicant's Submission

Variable	PWSA, gpd	Applicant, gpd	Difference, gpd	Difference, %
Q <sub>d, avg</sub>	1,605,911	1,601,020	4,891	0%
Q <sub>d, peak</sub>	5,620,687	5,603,568	17,119	0%
Q <sub>ex, avg</sub>	13,049	14,404	-1,355	-10%
Q <sub>ex, peak</sub>	45,671	50,413	-4,742	-10%
Q <sub>proj, avg</sub>	13,871	15,293	-1,422	-10%
Q <sub>proj, peak</sub>	48,548	53,527	-4,979	-10%

**EXHIBIT H.**

**Sewage Facilities Planning Module – Component 4A – Municipal  
Planning Agency Review**



## INSTRUCTIONS FOR COMPLETING COMPONENT 4A MUNICIPAL PLANNING AGENCY REVIEW

***Remove and recycle these instructions prior to mailing component to the approving agency.***

### Background

This component, Component 4, is used to obtain the comments of planning agencies and/or health departments having jurisdiction over the project area. It is used in conjunction with other planning module components appropriate to the characteristics of the project proposed.

### Who Should Complete the Component?

The component should be completed by any existing municipal planning agency, county planning agency, planning agency with areawide jurisdiction, and/or health department having jurisdiction over the project site. It is divided into sections to allow for convenient use by the appropriate agencies.

The project sponsor must forward copies of this component, along with supporting components and data, to the appropriate planning agency(ies) and health department(s) (if any) having jurisdiction over the development site. These agencies are responsible for responding to the questions in their respective sections of Component 4, as well as providing whatever additional comments they may wish to provide on the project plan. After the agencies have completed their review, the component will be returned to the applicant. The agencies have 60 days in which to provide comments to the applicant. If the agencies fail to comment within this 60 day period, the applicant may proceed to the next stage of the review without the comments. The use of registered mail or certified mail (return receipt requested) by the applicant when forwarding the module package to the agencies will document a date of receipt.

After receipt of the completed Component 4 from the planning agencies, or following expiration of the 60 day period without comments, the applicant must submit the entire component package to the municipality having jurisdiction over the project area for review and action. If approved by the municipality, the proposed plan, along with the municipal action, will be forwarded to the approving agency (Department of Environmental Protection or delegated local agency). The approving agency, in turn, will either approve the proposed plan, return it as incomplete, or disapprove the plan, based upon the information provided.

### ***Instructions for Completing Planning Agency and/or Health Department Review Component***

#### **Section A. Project Name**

Enter the project name as it appears on the accompanying sewage facilities planning module component (Component 2, 2m, 3, 3s or 3m).

#### **Section B. Review Schedule**

Enter the date the package was received by the reviewing agency, and the date that the review was completed.

#### **Section C. Agency Review**

1. Answer the yes/no questions and provide any descriptive information necessary on the lines provided. Attach additional sheets, if necessary.
2. Complete the name, title, and signature block.

#### **Section D. Additional Comments**

The Agency may provide whatever additional comment(s) it deems necessary, as described in the form. Attach additional sheets, if necessary.





COMMONWEALTH OF PENNSYLVANIA  
DEPARTMENT OF ENVIRONMENTAL PROTECTION  
BUREAU OF CLEAN WATER

DEP Code #:

**SEWAGE FACILITIES PLANNING MODULE  
COMPONENT 4A - MUNICIPAL PLANNING AGENCY REVIEW**

**Note to Project Sponsor:** To expedite the review of your proposal, one copy of your completed planning module package and one copy of this *Planning Agency Review Component* should be sent to the local municipal planning agency for their comments.

**SECTION A. PROJECT NAME** (See Section A of instructions)

Project Name

Winchester Thurston School

**SECTION B. REVIEW SCHEDULE** (See Section B of instructions)

1. Date plan received by municipal planning agency Decemberr 2 20212. Date review completed by agency December 10, 2021

**SECTION C. AGENCY REVIEW** (See Section C of instructions)

Yes	No	
<input type="checkbox"/>	<input checked="" type="checkbox"/>	1. Is there a municipal comprehensive plan adopted under the Municipalities Planning Code (53 P.S. 10101, <i>et seq.</i> )?
<input type="checkbox"/>	N/A <input type="checkbox"/>	2. Is this proposal consistent with the comprehensive plan for land use? If no, describe the inconsistencies _____
<input checked="" type="checkbox"/>	<input type="checkbox"/>	3. Is this proposal consistent with the use, development, and protection of water resources? If no, describe the inconsistencies _____
<input checked="" type="checkbox"/>	<input type="checkbox"/>	4. Is this proposal consistent with municipal land use planning relative to Prime Agricultural Land Preservation?
<input type="checkbox"/>	<input checked="" type="checkbox"/>	5. Does this project propose encroachments, obstructions, or dams that will affect wetlands? If yes, describe impacts _____
<input type="checkbox"/>	<input checked="" type="checkbox"/>	6. Will any known historical or archaeological resources be impacted by this project? If yes, describe impacts _____
<input type="checkbox"/>	<input checked="" type="checkbox"/>	7. Will any known endangered or threatened species of plant or animal be impacted by this project? If yes, describe impacts _____
<input checked="" type="checkbox"/>	<input type="checkbox"/>	8. Is there a municipal zoning ordinance?
<input type="checkbox"/>	<input checked="" type="checkbox"/>	9. Is this proposal consistent with the ordinance? If no, describe the inconsistencies <u>Under Review</u>
<input type="checkbox"/>	<input checked="" type="checkbox"/>	10. Does the proposal require a change or variance to an existing comprehensive plan or zoning ordinance?
<input checked="" type="checkbox"/>	<input type="checkbox"/>	11. Have all applicable zoning approvals been obtained?
<input checked="" type="checkbox"/>	<input type="checkbox"/>	12. Is there a municipal subdivision and land development ordinance?

**SECTION C. AGENCY REVIEW (continued)**

Yes	No	
<input type="checkbox"/>	<input checked="" type="checkbox"/>	13. Is this proposal consistent with the ordinance? If no, describe the inconsistencies <u>Under Review</u>
<input checked="" type="checkbox"/>	<input type="checkbox"/>	14. Is this plan consistent with the municipal Official Sewage Facilities Plan? If no, describe the inconsistencies _____
<input type="checkbox"/>	<input checked="" type="checkbox"/>	15. Are there any wastewater disposal needs in the area adjacent to this proposal that should be considered by the municipality? If yes, describe _____
<input type="checkbox"/>	<input checked="" type="checkbox"/>	16. Has a waiver of the sewage facilities planning requirements been requested for the residual tract of this subdivision?
<input type="checkbox"/>	<input type="checkbox"/>	If yes, is the proposed waiver consistent with applicable ordinances? If no, describe the inconsistencies _____
17. Name, title and signature of planning agency staff member completing this section: Name: <u>Kyla Prendergast</u> Title: <u>SeniorEnvironmental Planner</u> Signature: <u><i>Kyla Prendergast</i></u> Date: <u>December 10, 2021</u> Name of Municipal Planning Agency: <u>City of Pittsburgh Department of City Planning</u> Address <u>200 Ross Street 4th Floor Pittsburgh, PA 15219</u> Telephone Number: <u>(412) 255-2516</u>		

**SECTION D. ADDITIONAL COMMENTS (See Section D of instructions)**

This component does not limit municipal planning agencies from making additional comments concerning the relevancy of the proposed plan to other plans or ordinances. If additional comments are needed, attach additional sheets.

The planning agency must complete this component within 60 days.

This component and any additional comments are to be returned to the applicant.

**EXHIBIT I.**

**Sewage Facilities Planning Module – Component 4C – County of Joint  
Health Department Review**

COUNTY OF



ALLEGHENY

RICH FITZGERALD  
COUNTY EXECUTIVE

November 22, 2021

Craig R. Rubic, P.E.  
The Gateway Engineers, Inc.  
100 McMorris Road  
Pittsburgh, PA 15205

**RE: SEWAGE FACILITIES PLANNING MODULE**  
**Winchester Thurston School**  
**City of Pittsburgh, ALLEGHENY COUNTY**

Dear Mr. Rubic:

Enclosed is a signed copy of Component 4C, County or Joint County Health Department Review, for the above-referenced development. This Planning Module Component was received on November 22, 2021. The project proposes the following:

Project Description:	Winchester Thurston School. Proposing the interior/exterior renovation of an existing 2-story commercial/retail building (Parcel ID 0051-P-00076-0000-00) for a day school equipped with offices, classrooms, and restrooms among other facilities located on a 0.22 acre lot at 4651 Centre Avenue in the City of Pittsburgh, Allegheny County.
Sewage Flow:	565 GPD
Conveyance:	The flow from this site will be conveyed to the Pittsburgh Water and Sewer Authority (PWSA) collection system to the ALCOSAN POC A-22 to the Allegheny River interceptor and then to the ALOSAN Treatment Plant at Woods Run.
Sewer's Owner:	PWSA (collection) and ALCOSAN (interceptor)
Sewage Treatment Plant:	ALCOSAN



DEBRA BOGEN, MD, DIRECTOR  
**ALLEGHENY COUNTY HEALTH DEPARTMENT**  
**WATER POLLUTION CONTROL & SOLID WASTE MANAGEMENT**  
3901 PENN AVENUE • BUILDING 5 • PITTSBURGH, PA 15224-1318  
PHONE: 412.578.8040 • FAX: 412.578.8053  
[WWW.ALLEGHENYCOUNTY.US/HEALTHDEPARTMENT](http://WWW.ALLEGHENYCOUNTY.US/HEALTHDEPARTMENT)





Craig R. Rubic, P.E.

**RE: SEWAGE FACILITIES PLANNING MODULE**

**Winchester Thurston School**

**City of Pittsburgh, ALLEGHENY COUNTY**

November 22, 2021

Page 2

Please be advised that a permit must be obtained from the Allegheny County Health Department's (ACHD) Plumbing Section prior to commencing any plumbing work for the proposed project. Plumbing work for which an ACHD Plumbing Permit must be obtained includes any plumbing work done on the site and any sewers, which will not be owned and operated by a municipality or a sewer authority. In addition, it should be noted that the approval of this sewage facilities planning module does not include approval of pipe size and/or type. Approval for pipe size and/or type must be obtained by filing a specific plumbing plan with the ACHD's Plumbing Section. If you should have any questions relative to ACHD's plumbing requirements, Ivo Miller, Plumbing Program Manager at 412-578-8393.

The ACHD has no objection to the approval of this project. If you have any questions, please call me at 412-578-8046.

Sincerely,

A handwritten signature in blue ink that reads "Freddie Fields". The signature is written in a cursive, flowing style.

Freddie Fields, M.B.A.

Environmental Health Engineer III

Water Pollution Control & Solid Waste Management

Enclosure

cc: Thomas Flanagan, PA Department of Environmental Protection w/attachment  
Ivo Miller, ACHD w/attachment



## INSTRUCTIONS FOR COMPLETING COMPONENT 4C COUNTY OR JOINT HEALTH DEPARTMENT REVIEW

---

*Remove and recycle these instructions prior to mailing component to the approving agency.*

---

### **Background**

This component, Component 4, is used to obtain the comments of planning agencies and/or health departments having jurisdiction over the project area. It is used in conjunction with other planning module components appropriate to the characteristics of the project proposed.

### **Who Should Complete the Component?**

The component should be completed by any existing municipal planning agency, county planning agency, planning agency with areawide jurisdiction, and/or health department having jurisdiction over the project site. It is divided into sections to allow for convenient use by the appropriate agencies.

The project sponsor must forward copies of this component, along with supporting components and data, to the appropriate planning agency(ies) and health department(s) (if any) having jurisdiction over the development site. These agencies are responsible for responding to the questions in their respective sections of Component 4, as well as providing whatever additional comments they may wish to provide on the project plan. After the agencies have completed their review, the component will be returned to the applicant. The agencies have 60 days in which to provide comments to the applicant. If the agencies fail to comment within this 60 day period, the applicant may proceed to the next stage of the review without the comments. The use of registered mail or certified mail (return receipt requested) by the applicant when forwarding the module package to the agencies will document a date of receipt.

After receipt of the completed Component 4 from the planning agencies, or following expiration of the 60 day period without comments, the applicant must submit the entire component package to the municipality having jurisdiction over the project area for review and action. If approved by the municipality, the proposed plan, along with the municipal action, will be forwarded to the approving agency (Department of Environmental Protection or delegated local agency). The approving agency, in turn, will either approve the proposed plan, return it as incomplete, or disapprove the plan, based upon the information provided.

---

### ***Instructions for Completing Planning Agency and/or Health Department Review Component***

---

#### **Section A. Project Name**

Enter the project name as it appears on the accompanying sewage facilities planning module component (Component 2, 2m, 3, 3s or 3m).

#### **Section B. Review Schedule**

Enter the date the package was received by the reviewing agency, and the date that the review was completed.

#### **Section C. Agency Review**

1. Answer the yes/no questions and provide any descriptive information necessary on the lines provided. Attach additional sheets, if necessary.
2. Complete the name, title, and signature block.

#### **Section D. Additional Comments**

The Agency may provide whatever additional comment(s) it deems necessary, as described in the form. Attach additional sheets, if necessary.

**SEWAGE FACILITIES PLANNING MODULE  
 COMPONENT 4C - COUNTY OR JOINT HEALTH DEPARTMENT REVIEW**

**Note to Project Sponsor:** To expedite the review of your proposal, one copy of your completed planning module package and one copy of this *Planning Agency Review Component* should be sent to the county or joint county health department for their comments.

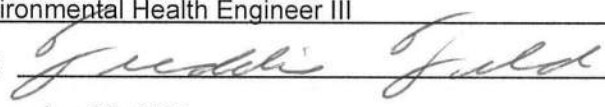
**SECTION A. PROJECT NAME** (See Section A of instructions)

Project Name  
Winchester Thurston School

**SECTION B. REVIEW SCHEDULE** (See Section B of instructions)

1. Date plan received by county or joint county health department November 22, 2021  
 Agency name Allegheny County Health Department (ACHD)
2. Date review completed by agency November 23, 2021

**SECTION C. AGENCY REVIEW** (See Section C of instructions)

- |                                     |                                     |   |
|-------------------------------------|-------------------------------------|---|
| Yes                                 | No                                  |   |
| <input checked="" type="checkbox"/> | <input type="checkbox"/>            | 1. Is the proposed plan consistent with the municipality's Official Sewage Facilities Plan?<br>If no, what are the inconsistencies? _____   |
| <input type="checkbox"/>            | <input checked="" type="checkbox"/> | 2. Are there any wastewater disposal needs in the area adjacent to this proposal that should be considered by the municipality?<br>If yes, describe _____   |
| <input type="checkbox"/>            | <input checked="" type="checkbox"/> | 3. Is there any known groundwater degradation in the area of this proposal?<br>If yes, describe _____   |
| <input checked="" type="checkbox"/> | <input type="checkbox"/>            | 4. The county or joint county health department recommendation concerning this proposed plan is as follows: <u>ACHD recommends approval. See attached letter.</u>   |
|                                     |                                     | 5. Name, title and signature of person completing this section:<br>Name: <u>Freddie Fields</u><br>Title: <u>Environmental Health Engineer III</u><br>Signature: <u></u><br>Date: <u>November 23, 2021</u><br>Name of County Health Department: <u>ACHD</u><br>Address: <u>3901 Penn Avenue, Building #5, Pittsburgh, PA 15224-1318</u><br>Telephone Number: <u>412-578-8046</u> |

**SECTION D. ADDITIONAL COMMENTS** (See Section D of instructions)

This component does not limit county planning agencies from making additional comments concerning the relevancy of the proposed plan to other plans or ordinances. If additional comments are needed, attach additional sheets.

The county planning agency must complete this component within 60 days.  
 This component and any additional comments are to be returned to the applicant.