

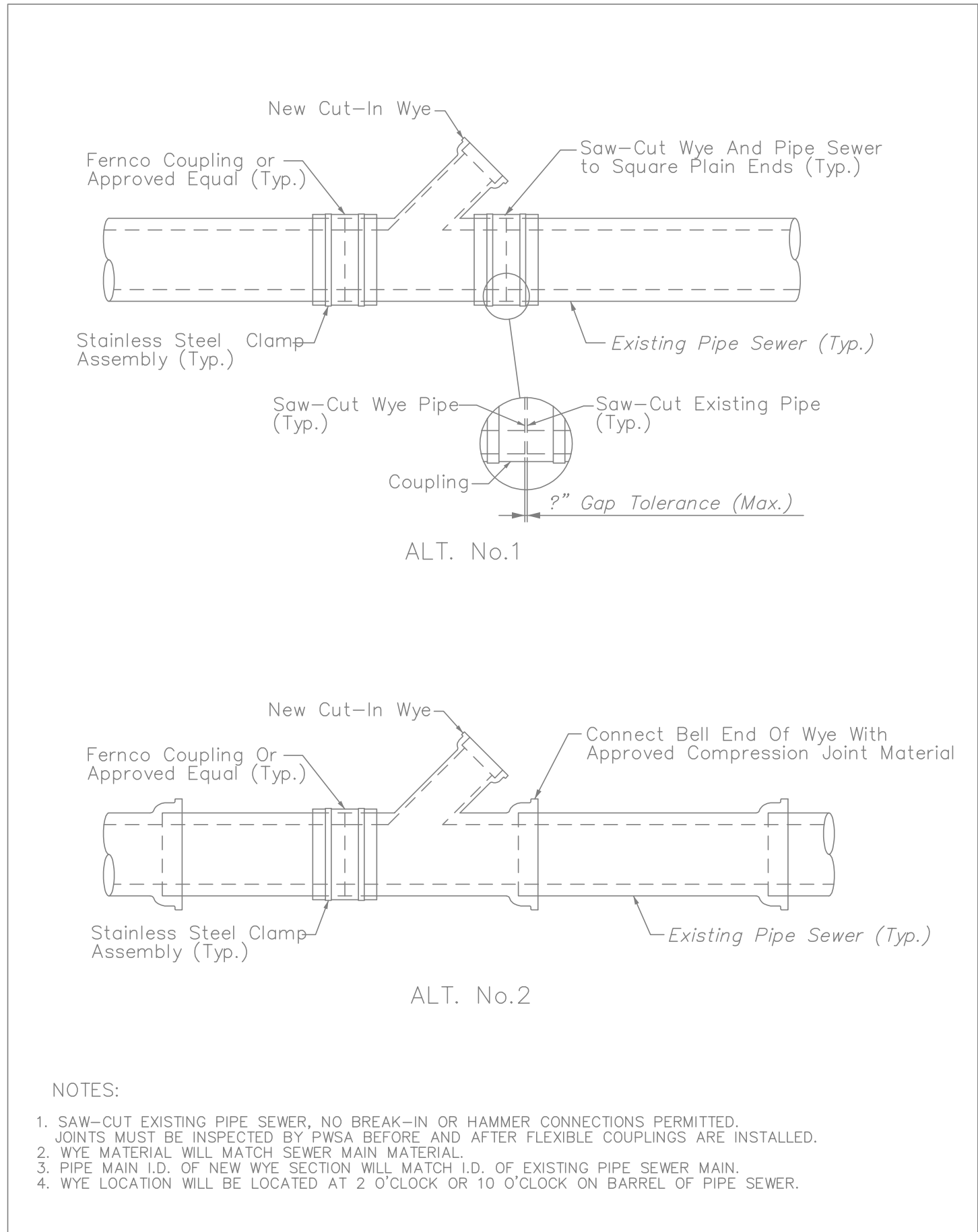
NOTE:
Existing lateral must be inspected and in proper working condition.

MODIFICATION TO EXISTING STRUCTURE OR FACILITY
PLAN VIEW DETAIL

REVISIONS

PWSA The Pittsburgh Water and Sewer Authority
Separated House Lateral
One Connection To Main

Approved by: _____ Scale: N.T.S. Supplemental Detail Drawing: ST-5



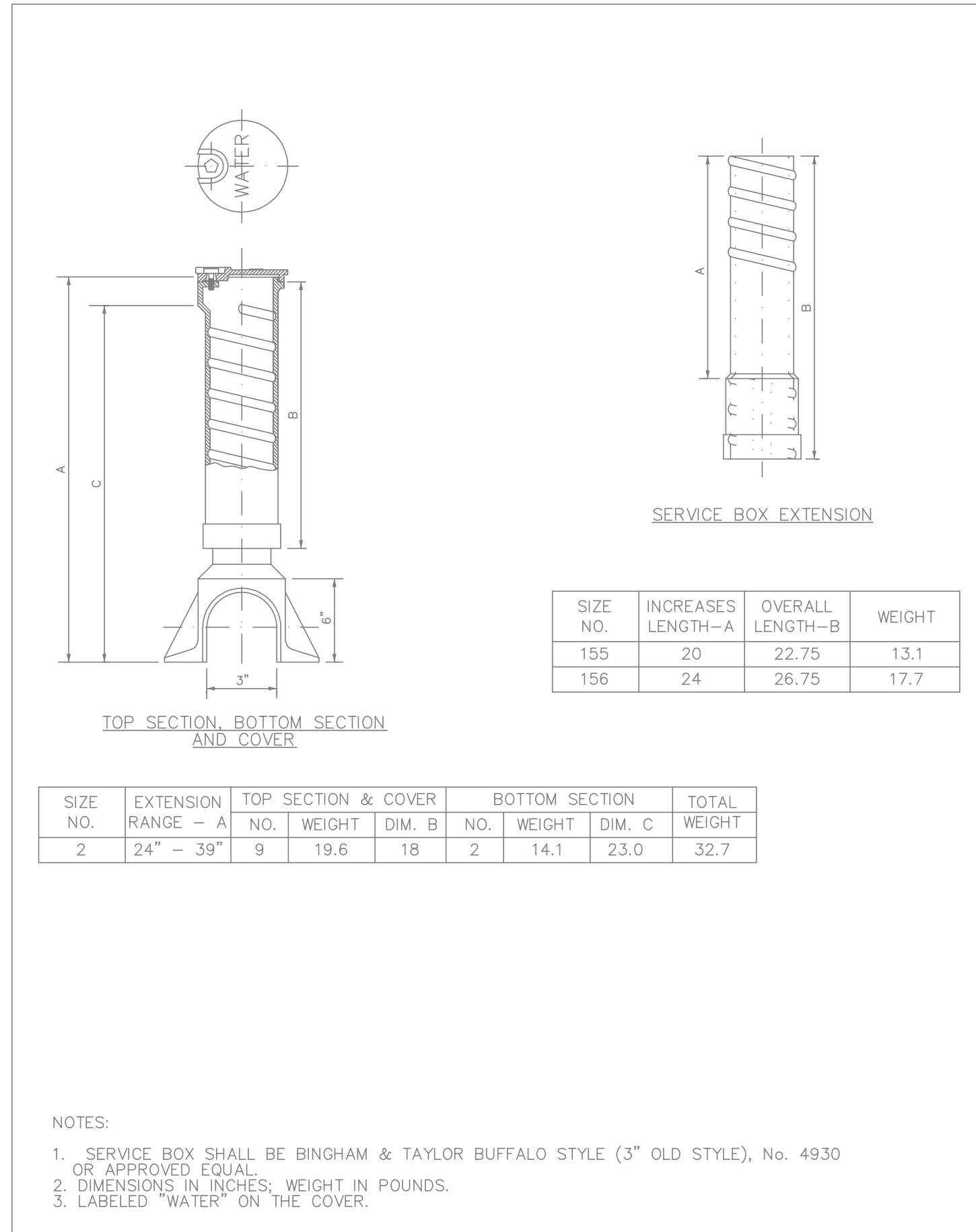
NOTES:
1. SAW-CUT EXISTING PIPE SEWER, NO BREAK-IN OR HAMMER CONNECTIONS PERMITTED. JOINTS MUST BE INSPECTED BY PWSA BEFORE AND AFTER FLEXIBLE COUPLINGS ARE INSTALLED.
2. WYE MATERIAL WILL MATCH SEWER MAIN MATERIAL.
3. PIPE MAIN I.D. OF NEW WYE SECTION WILL MATCH I.D. OF EXISTING PIPE SEWER MAIN.
4. WYE LOCATION WILL BE LOCATED AT 2 O'CLOCK OR 10 O'CLOCK ON BARREL OF PIPE SEWER.

ALT. No.2

REVISIONS

PWSA The Pittsburgh Water and Sewer Authority
Cut-In Wye Pipe Transition

Approved by: _____ Scale: N.T.S. Supplemental Detail Drawing: ST-7

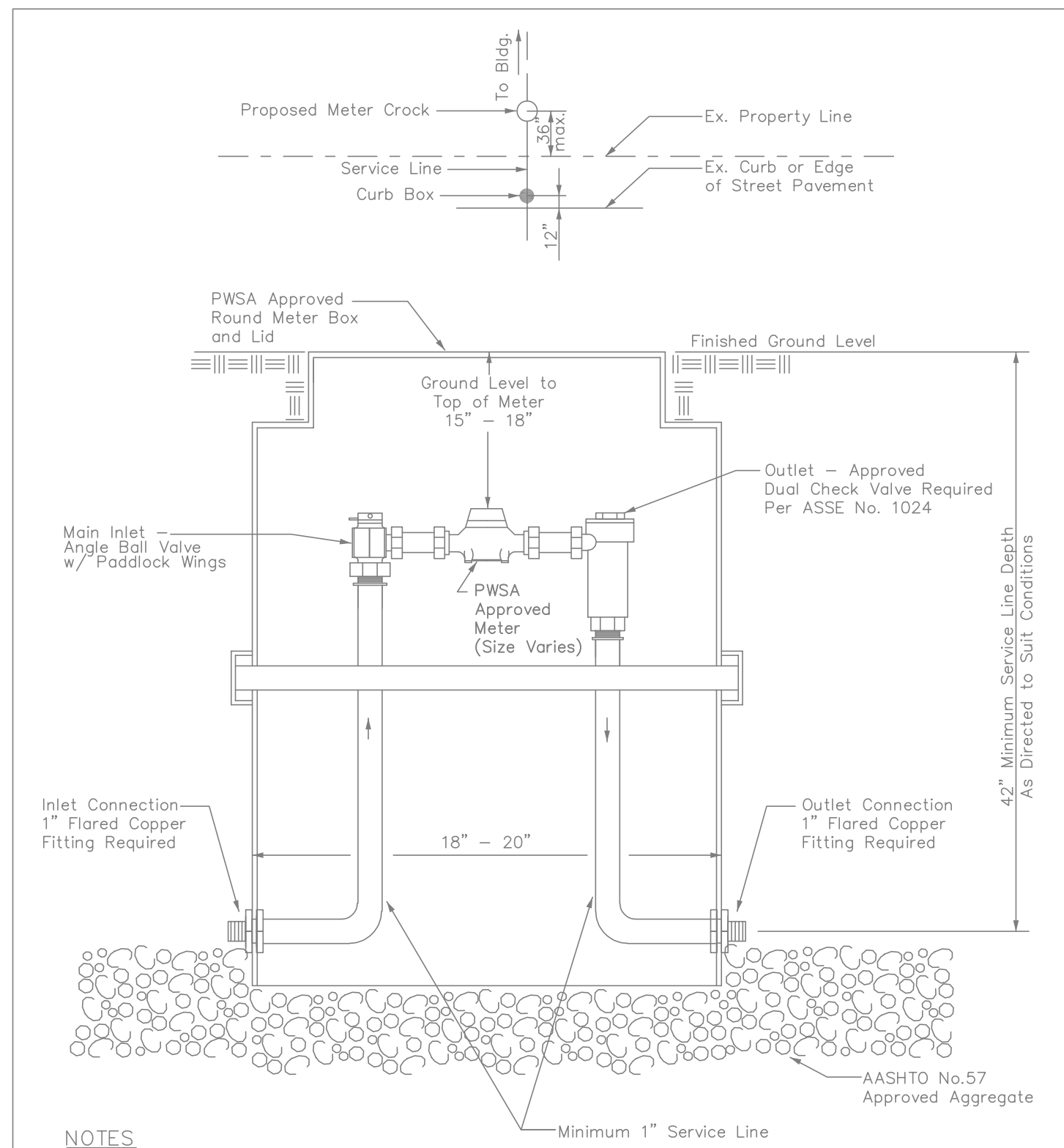


NOTES:
1. SERVICE BOX SHALL BE BINGHAM & TAYLOR BUFFALO STYLE (3" OLD STYLE), No. 4930 OR APPROVED EQUAL.
2. DIMENSIONS IN INCHES; WEIGHT IN POUNDS.
3. LABELED "WATER" ON THE COVER.

REVISIONS

PWSA The Pittsburgh Water and Sewer Authority
3" Curb Service Box

Approved by: _____ Scale: N.T.S. Supplemental Detail Drawing: WCB-1

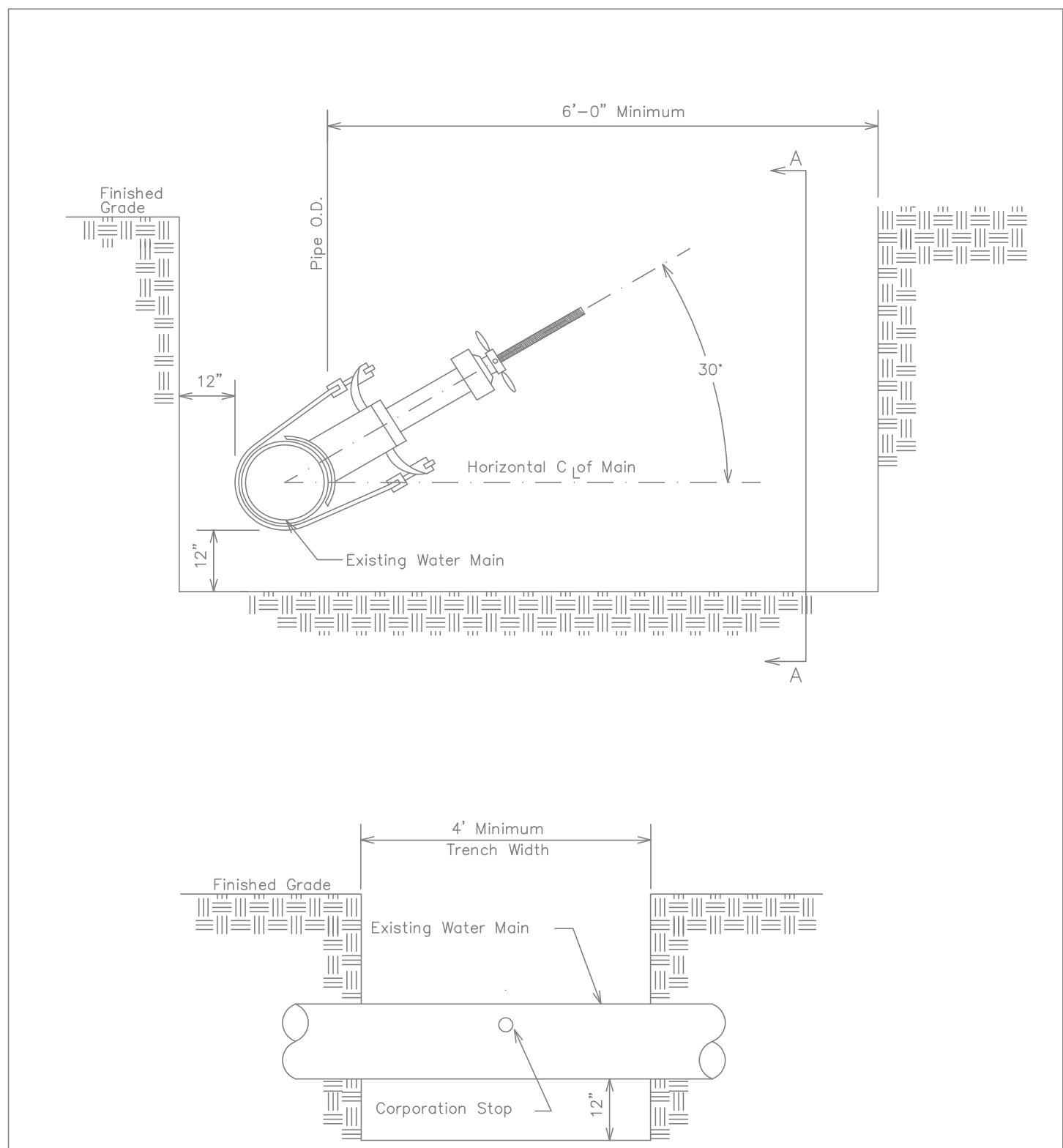


NOTES:
1. METER SETTING ASSEMBLY MUST BE FORD, OR EQUAL, COPPERSETTER WITH DUAL CHECK VALVE OR APPROVED EQUAL PER ASSE No. 1024, COMPLETE WITH MXU.
2. METER BOX SETTING AND PIPE ASSEMBLY TO BE CONSTRUCTED BY THE PROPERTY OWNER. THE PWSA IS ONLY RESPONSIBLE FOR THE METER AND MXU READING DEVICE. THE PROPERTY OWNER IS RESPONSIBLE FOR ALL OTHER ITEMS, INCLUDING PROTECTING THE PWSA METER AND MXU FROM ABUSE AND/OR FREEZING.
3. METER CROCK BASE TO REMAIN OPEN TO BASE MATERIAL, DO NOT SEAL.

REVISIONS

PWSA The Pittsburgh Water and Sewer Authority
Residential Domestic Service
External Setting 5/8" - 1" Meter

Approved by: _____ Scale: N.T.S. Supplemental Detail Drawing: WS-5MPR



NOTE:
1. PWSA will make the actual tap.
2. Excavation and shoring required as per current OSHA standards.

REVISIONS

PWSA The Pittsburgh Water and Sewer Authority
Trench Requirements For
1", 1-1/2" And 2" Water Service Tap

Approved by: _____ Scale: N.T.S. Supplemental Detail Drawing: WS-C

THE PITTSBURGH WATER & SEWER AUTHORITY APPROVAL BLOCK

To be completed by the Applicant:
(Check all that apply)

NEW WATER CONNECTION(S)
 NEW SEWER CONNECTION(S)
 REUSE EXISTING WATER CONNECTION(S)
 REUSE EXISTING SEWER CONNECTION(S)
 TERMINATE EXISTING WATER CONNECTION(S)
 TERMINATE EXISTING SEWER CONNECTION(S)
 PRIVATE CONSTRUCTION OF PUBLIC FACILITIES

To be completed by the PWSA:
(Required for ALL approvals)

REVIEWER _____

CHIEF OF OPERATIONS _____

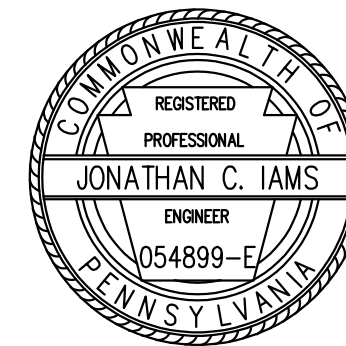
(Required for "Private Construction of Public Facilities" ONLY)

DIRECTOR OF ENGINEERING AND CONSTRUCTION _____

PWSA PROJECT NUMBER 20014.04

TAP C RECORD NUMBER _____

Signatures / Approval by PWSA are for the physical connection(s) to the water and/or sewer system only. Responsibility for the design and work depicted by the drawings, including the flow design for the facilities, is by the Professional Engineer shown by the seal and signature affixed to the drawing. The PWSA does not represent or warrant that the water supply to the facilities is sufficient to support the design.



iams Consulting, LLC
ENGINEERING ENVIRONMENTS
333 East Carson Street
Suite 323
Pittsburgh, PA 15219
Ph: 412.697.3590
Fax: 412.697.3591
www.iamsconsulting.com

DRESDEN WAY

5228/5226 DRESDEN WAY
PITTSBURGH, PA 15201

SCALE: 1"=10' SHEET 2 OF 2 ACCESSION NO. C- CASE NO. _____

DATE: 10/29/2020