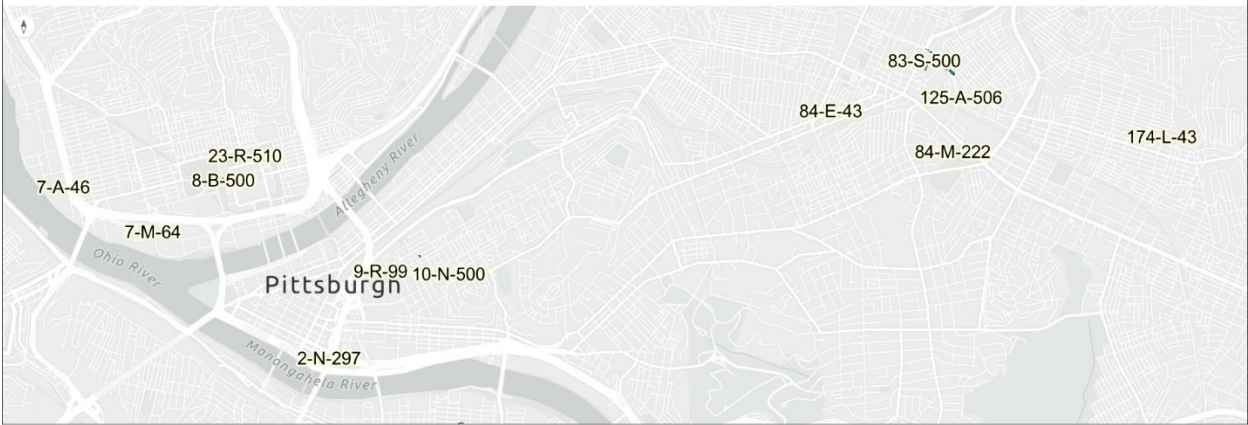


EXHIBIT A. URA TO DOMI CONVEYED PARCELS

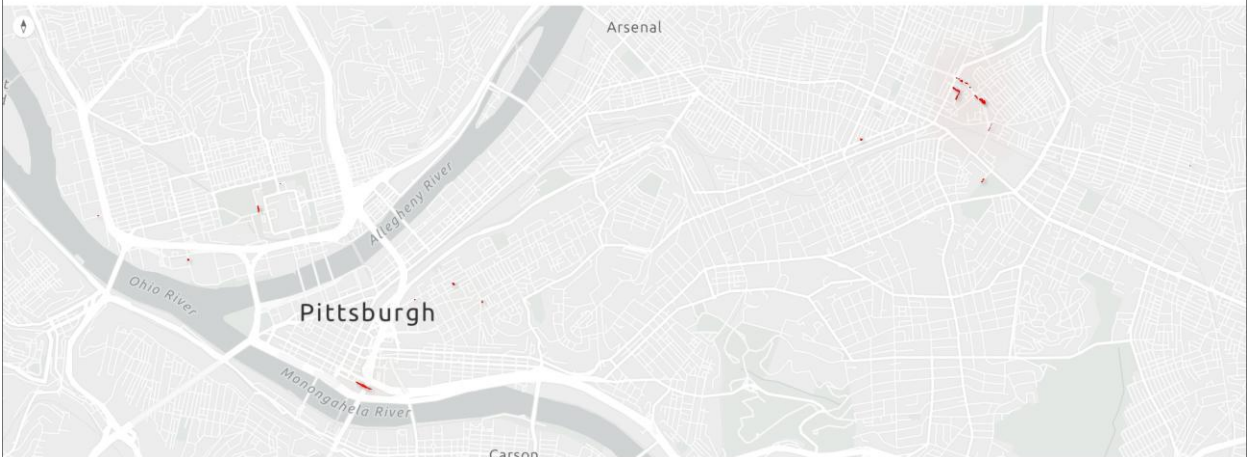
- i. Block 002-N, Lot 297 in the 1st Ward of the City of Pittsburgh
- ii. Block 009-S, Lot 181-A in the 3rd Ward of the City of Pittsburgh
- iii. Block 009-R, Lot 099 in the 3rd Ward of the City of Pittsburgh
- iv. Block 010-N, Lot 500 in the 3rd Ward of the City of Pittsburgh
- v. Block 084-M, Lot 222 in the 7th Ward of the City of Pittsburgh
- vi. Block 084-E, Lot 043 in the 8th Ward of the City of Pittsburgh
- vii. Block 083-S, Lot 193 in the 11th Ward of the City of Pittsburgh
- viii. Block 083-M, Lot 083 in the 11th Ward of the City of Pittsburgh
- ix. Block 083-M, Lot 084 in the 11th Ward of the City of Pittsburgh
- x. Block 083-S, Lot 069 in the 11th Ward of the City of Pittsburgh
- xi. Block 083-S, Lot 083 in the 11th Ward of the City of Pittsburgh
- xii. Block 083-S, Lot 084 in the 11th Ward of the City of Pittsburgh
- xiii. Block 083-S, Lot 087 in the 11th Ward of the City of Pittsburgh
- xiv. Block 083-S, Lot 215 in the 11th Ward of the City of Pittsburgh
- xv. Block 083-S, Lot 216 in the 11th Ward of the City of Pittsburgh
- xvi. Block 083-S, Lot 217 in the 11th Ward of the City of Pittsburgh
- xvii. Block 083-S, Lot 218 in the 11th Ward of the City of Pittsburgh
- xviii. Block 083-S, Lot 252 in the 11th Ward of the City of Pittsburgh
- xix. Block 083-S, Lot 271 in the 11th Ward of the City of Pittsburgh
- xx. Block 083-S, Lot 273 in the 11th Ward of the City of Pittsburgh
- xxi. Block 083-S, Lot 275 in the 11th Ward of the City of Pittsburgh
- xxii. Block 083-S, Lot 276 in the 11th Ward of the City of Pittsburgh
- xxiii. Block 083-S, Lot 277 in the 11th Ward of the City of Pittsburgh
- xxiv. Block 083-S, Lot 278 in the 11th Ward of the City of Pittsburgh
- xxv. Block 083-S, Lot 279 in the 11th Ward of the City of Pittsburgh
- xxvi. Block 083-S, Lot 500 in the 11th Ward of the City of Pittsburgh
- xxvii. Block 083-S, Lot 500-0-1 in the 12th Ward of the City of Pittsburgh
- xxviii. Block 125-A, Lot 506 in the 12th Ward of the City of Pittsburgh
- xxix. Block 174-L, Lot 043 in the 13th Ward of the City of Pittsburgh
- xxx. Block 007-A, Lot 046 in the 21st Ward of the City of Pittsburgh
- xxxi. Block 007-M, Lot 061 in the 21st Ward of the City of Pittsburgh
- xxxii. Block 007-M, Lot 064 in the 21st Ward of the City of Pittsburgh
- xxxiii. Block 008-B, Lot 500 in the 22nd Ward of the City of Pittsburgh
- xxxiv. Block 008-C, Lot 130 in the 22nd Ward of the City of Pittsburgh
- xxxv. Block 023-R, Lot 510 in the 22nd Ward of the City of Pittsburgh

URA to City Conveyance



Data provided by Esri, TomTom, Garmin, SwireMap, GeoTechnology, Inc, METI/NASA, USGS, EPA, NPS, USDA, USFWS

URA to City Conveyance



Data provided by Esri, TomTom, Garmin, SwireMap, GeoTechnology, Inc, METI/NASA, USGS, EPA, NPS, USDA, USFWS

URA to City Conveyance



Esri Community Maps Contributors, County of Allegheny, data.pa.gov | © OpenStreetMap, Mapbox, Esri, TomTom, Garmin, SafeGraph, GeoTechnologies, Inc, METI, NOAA, USGS, EPA, NPS, US Census Bureau, USDA, USFWS

URA to City Conveyance



Esri Community Maps Contributors, County of Allegheny, data.pa.gov | © OpenStreetMap, Mapbox, Esri, TomTom, Garmin, SafeGraph, GeoTechnologies, Inc, METI, NOAA, USGS, EPA, NPS, US Census Bureau, USDA, USFWS



Esri Community Maps Contributors, County of Allegheny, data.papm, © OpenStreetMap contributors, Esri, Terracon, Garmin, GeoTechnology, Inc, XEROX, NOAA, USGS, EPA, NPS, US Census Bureau, USDA, USFWS



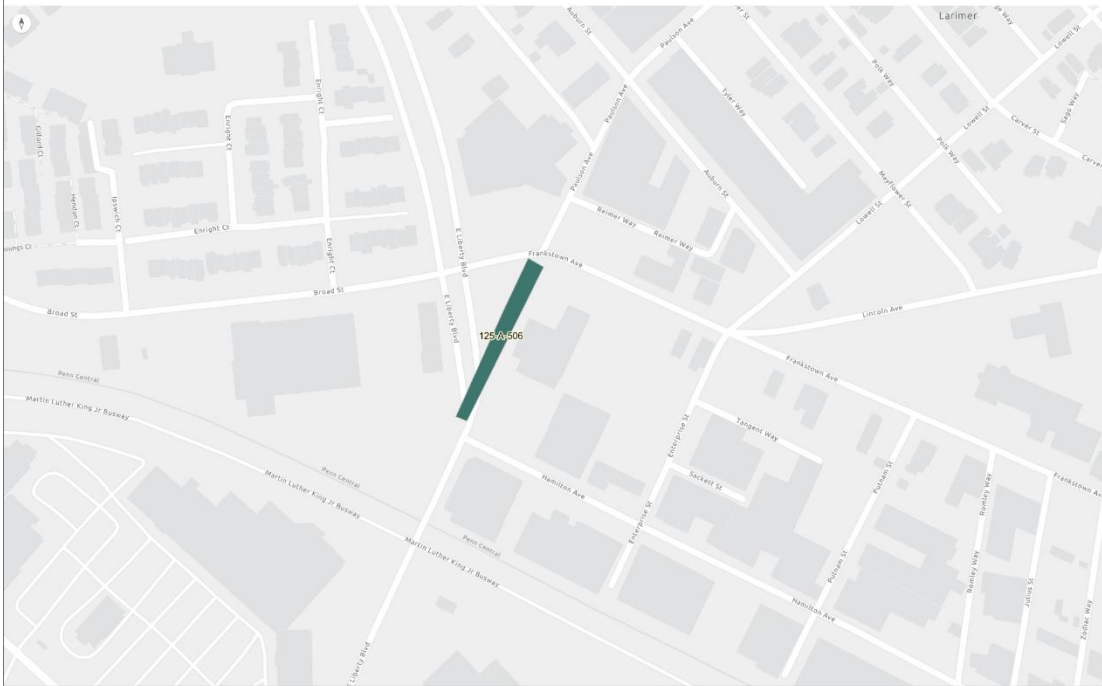
Esri Community Maps Contributors, County of Allegheny, data.papm, © OpenStreetMap contributors, Esri, Terracon, Garmin, GeoTechnology, Inc, XEROX, NOAA, USGS, EPA, NPS, US Census Bureau, USDA, USFWS

URA to City Conveyance



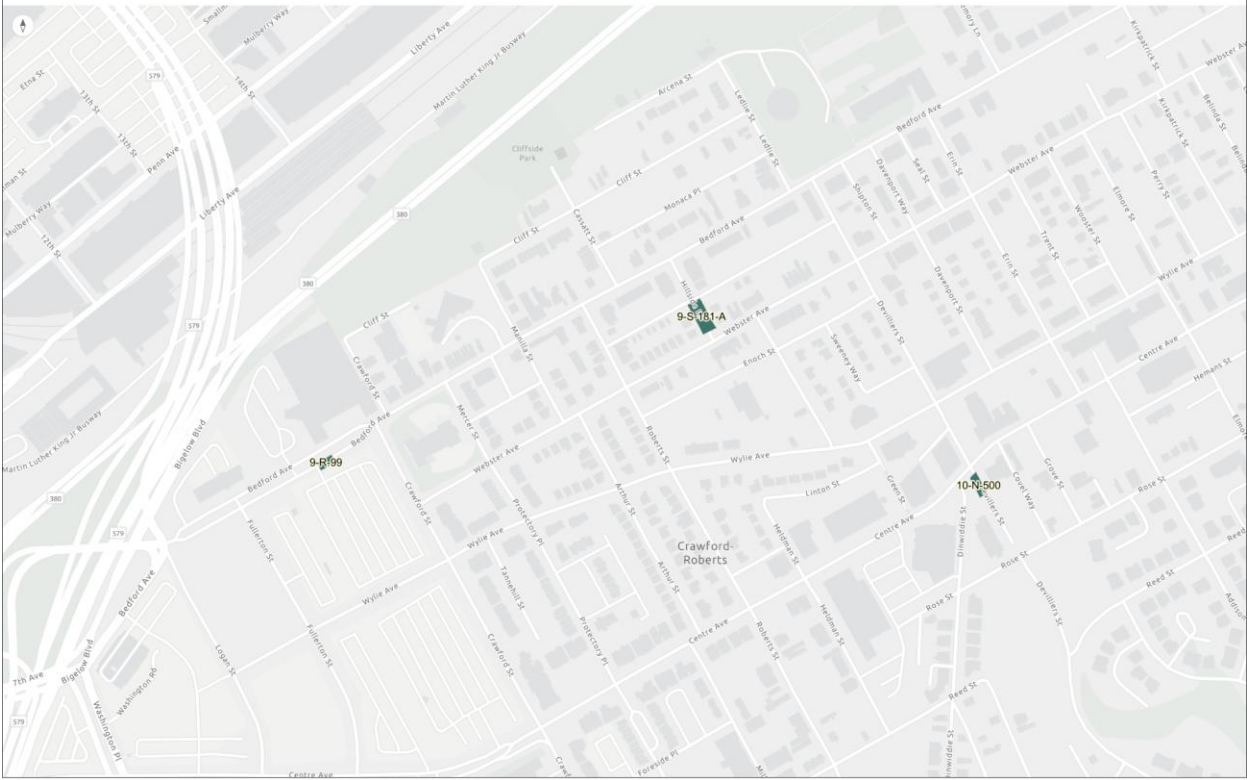
East Community Maps Contributors: County of Allegheny: data24.gov | © OpenStreetMap, Mapbox, Esri, TomTom, Garmin, GeoGraphia, GeoTechnologies, Inc, METI/SAGA, CIGIS, EPA, NPS, US Census Bureau, USDA, USFWS

URA to City Conveyance



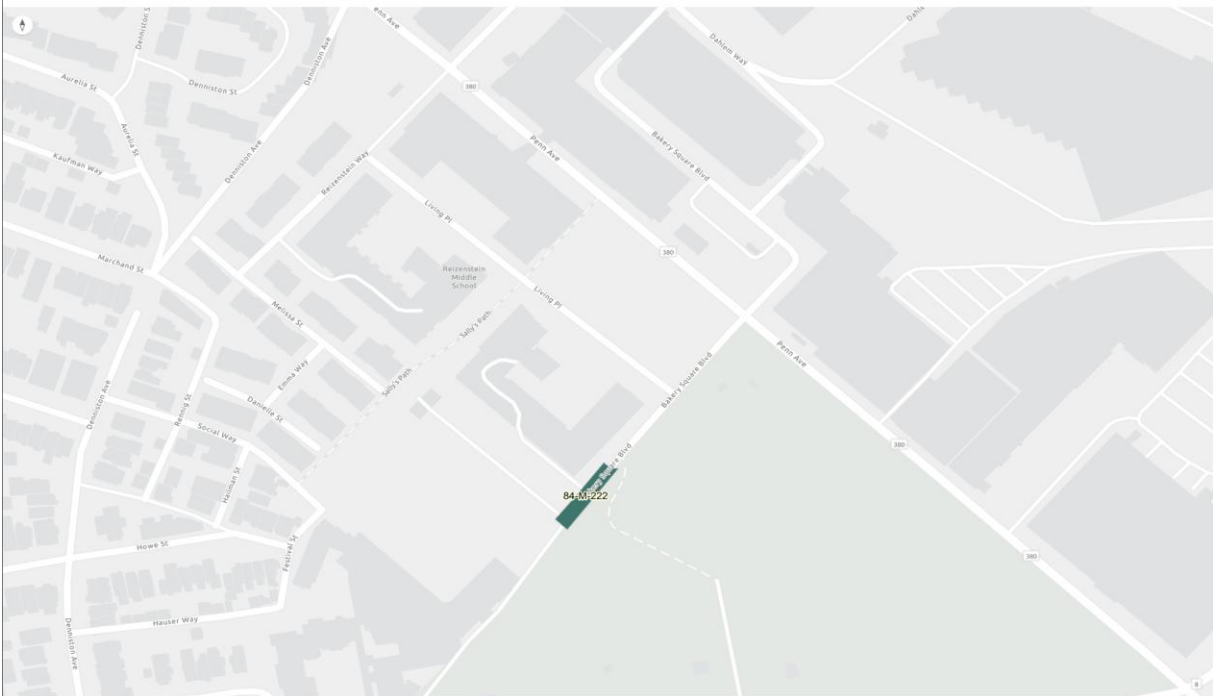
East Community Maps Contributors: County of Allegheny: data24.gov | © OpenStreetMap, Mapbox, Esri, TomTom, Garmin, GeoGraphia, GeoTechnologies, Inc, METI/SAGA, CIGIS, EPA, NPS, US Census Bureau, USDA, USFWS

URA to City Conveyance



Esri Community Maps Contributors, County of Allegheny, data.pw.gov, © OpenStreetMap, Mapbox, Esri, TerraFirma, GeoBos, GeoEye, GeoTechnology, Inc, HERE, NAVIA, USDA, EPA, NOAA, US Census Bureau, USDA, USFWS

URA to City Conveyance



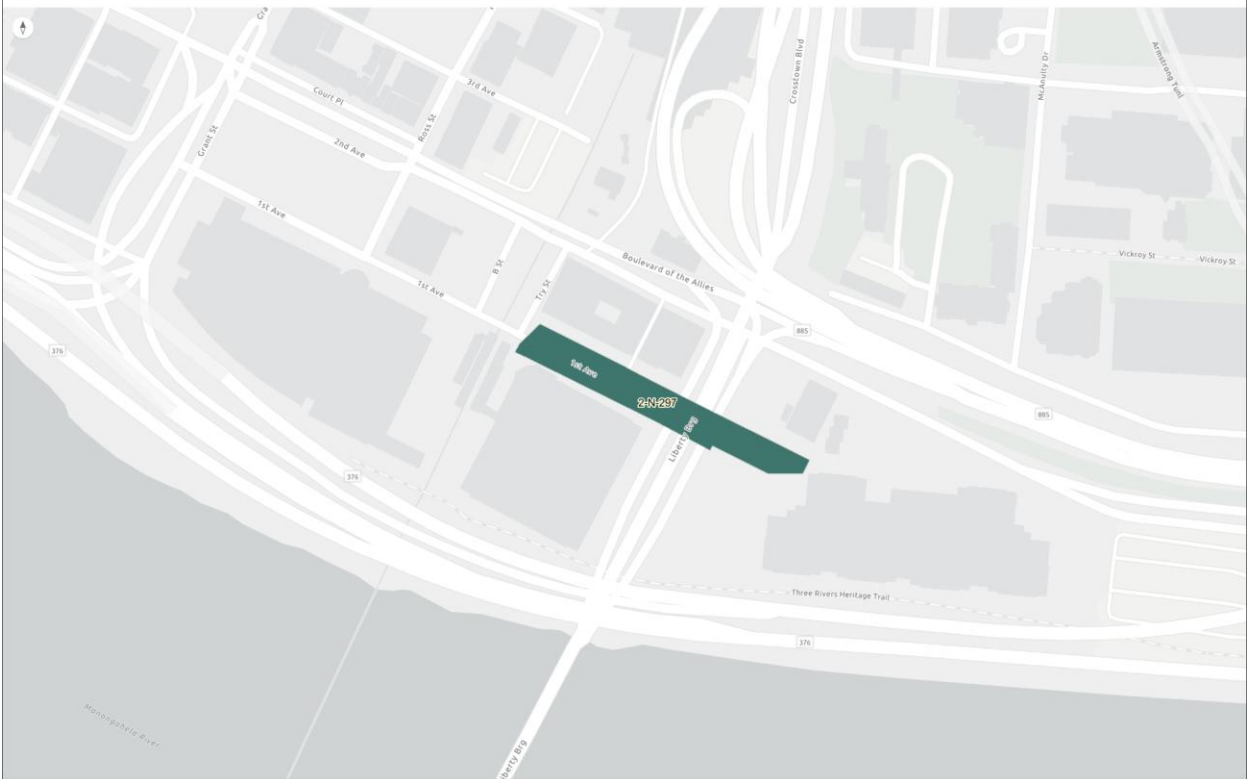
Esri Community Maps Contributors, County of Allegheny, data.pw.gov, © OpenStreetMap, Mapbox, Esri, TerraFirma, GeoBos, GeoEye, GeoTechnology, Inc, HERE, NAVIA, USDA, EPA, NOAA, US Census Bureau, USDA, USFWS

URA to City Conveyance



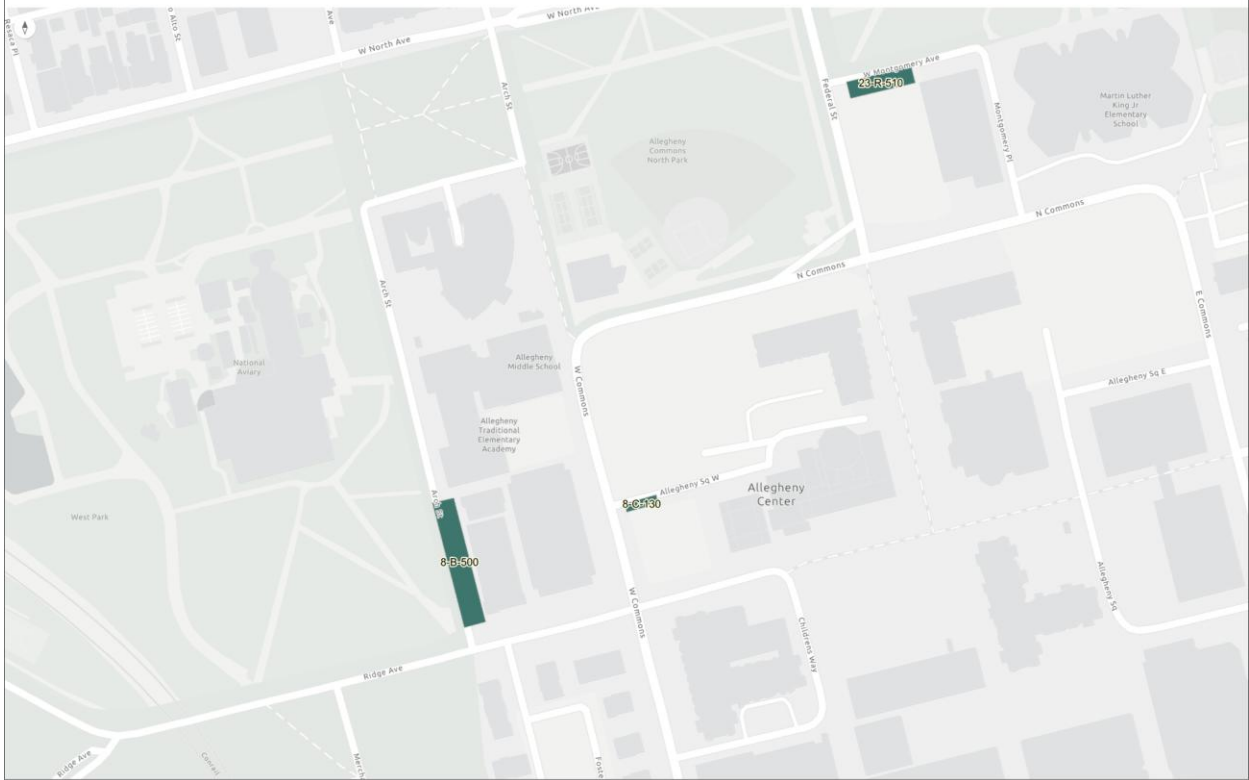
Esri Community Maps Contributors, County of Allegheny, data.ga.gov, © OpenStreetMap, Mapbox, Esri, TerraFirma, Garmin, DeLorme, GeoEye, OneWorldGeography, Inc, MEIT, NAASA, ESRI, EPA, FPLS, US Census Bureau, ESRI, Esri/US

URA to City Conveyance



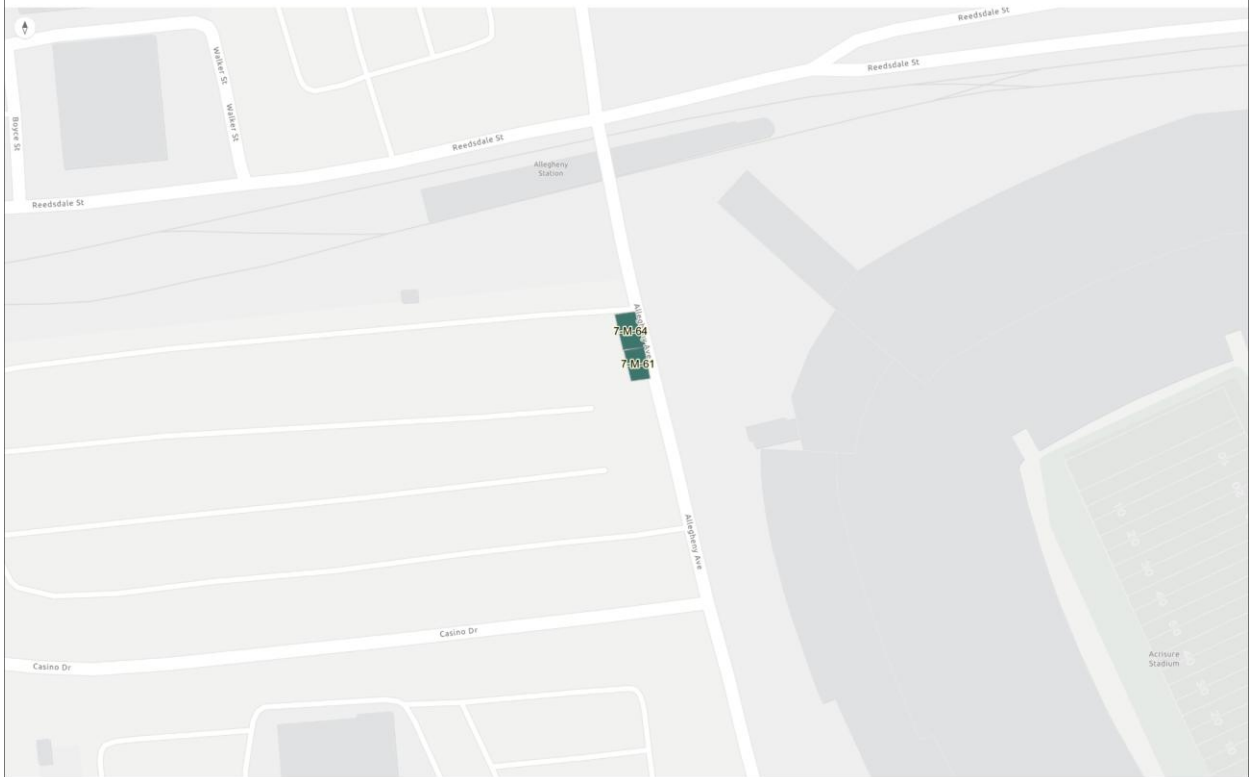
Esri Community Maps Contributors, County of Allegheny, data.ga.gov, © OpenStreetMap, Mapbox, Esri, TerraFirma, Garmin, DeLorme, GeoEye, OneWorldGeography, Inc, MEIT, NAASA, ESRI, EPA, FPLS, US Census Bureau, ESRI, Esri/US

URA to City Conveyance



Esri Community Maps Contributors, County of Allegheny, data.pn.gov, © OpenStreetMap, Microsoft, Esri, TerraFirma, Garmin, DeLorme, GeoEye, OneWorldGeographics, Inc, MEET/NASA, ESRI, EPA, XPS, US Census Bureau, ESRI, ESRI/US

URA to City Conveyance



Esri Community Maps Contributors, County of Allegheny, data.pn.gov, © OpenStreetMap, Microsoft, Esri, TerraFirma, Garmin, DeLorme, GeoEye, OneWorldGeographics, Inc, MEET/NASA, ESRI, EPA, XPS, US Census Bureau, ESRI, ESRI/US