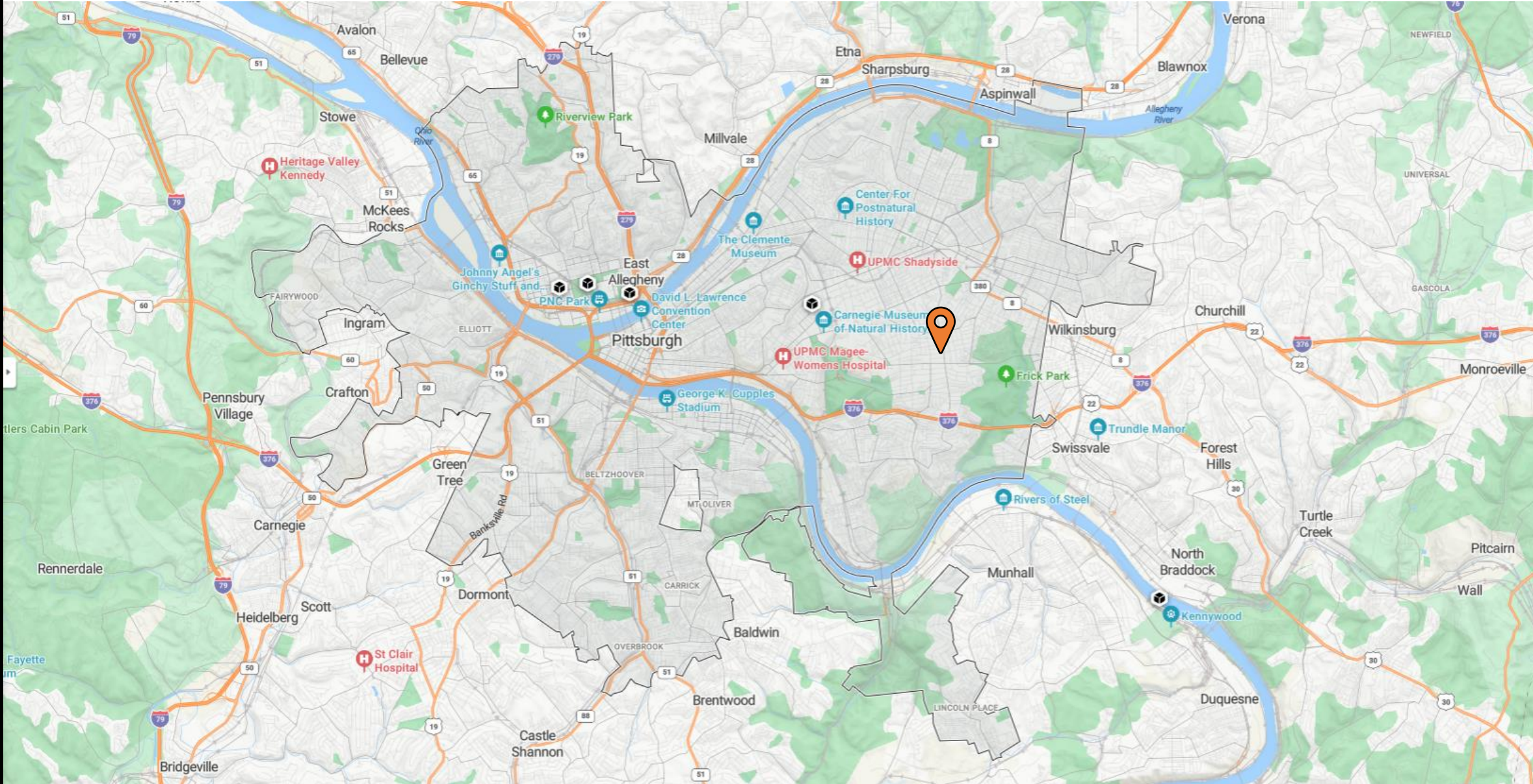


*Anathan House  
Historic Landmark Nomination  
Planning Commission Presentation*

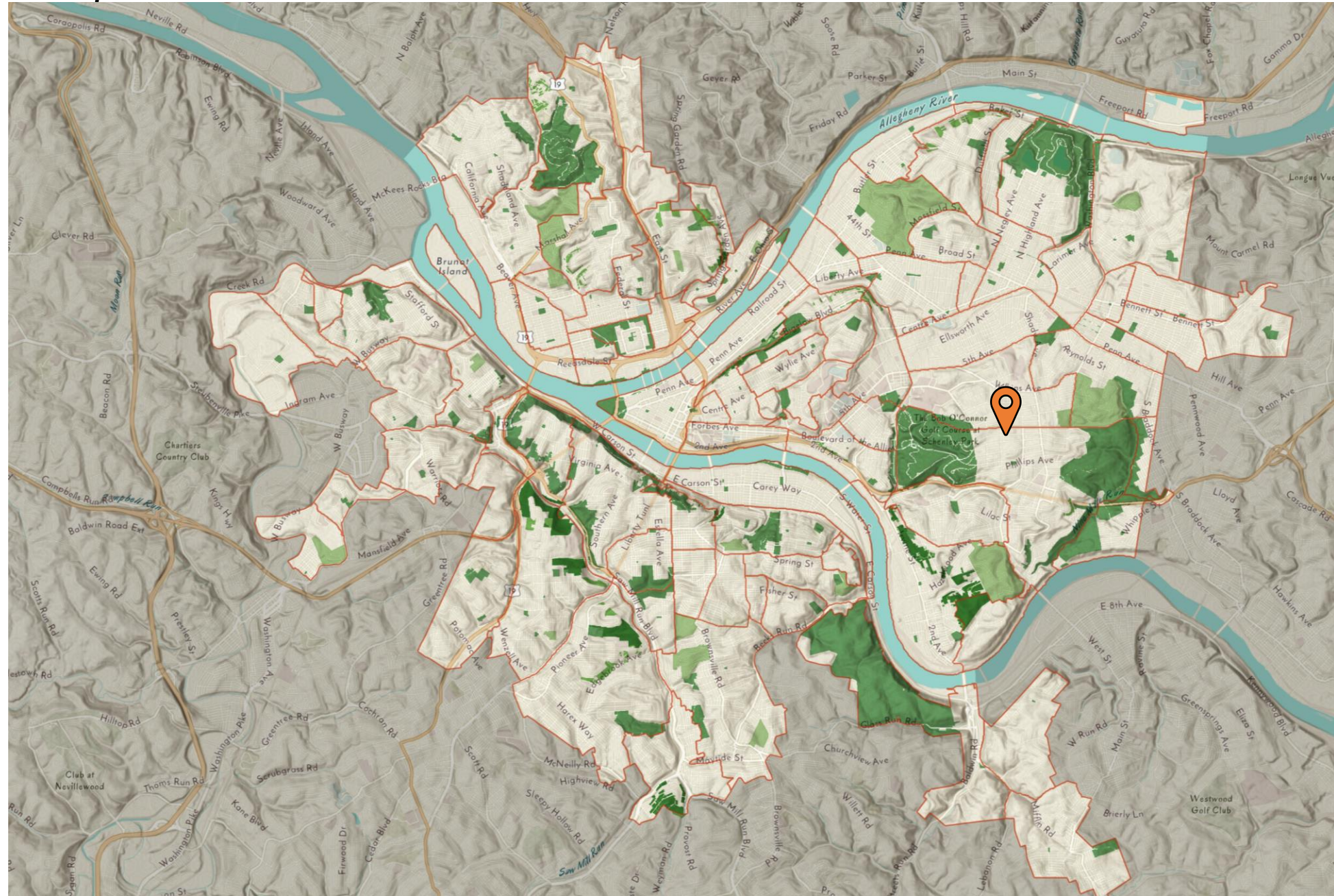


# Location Map



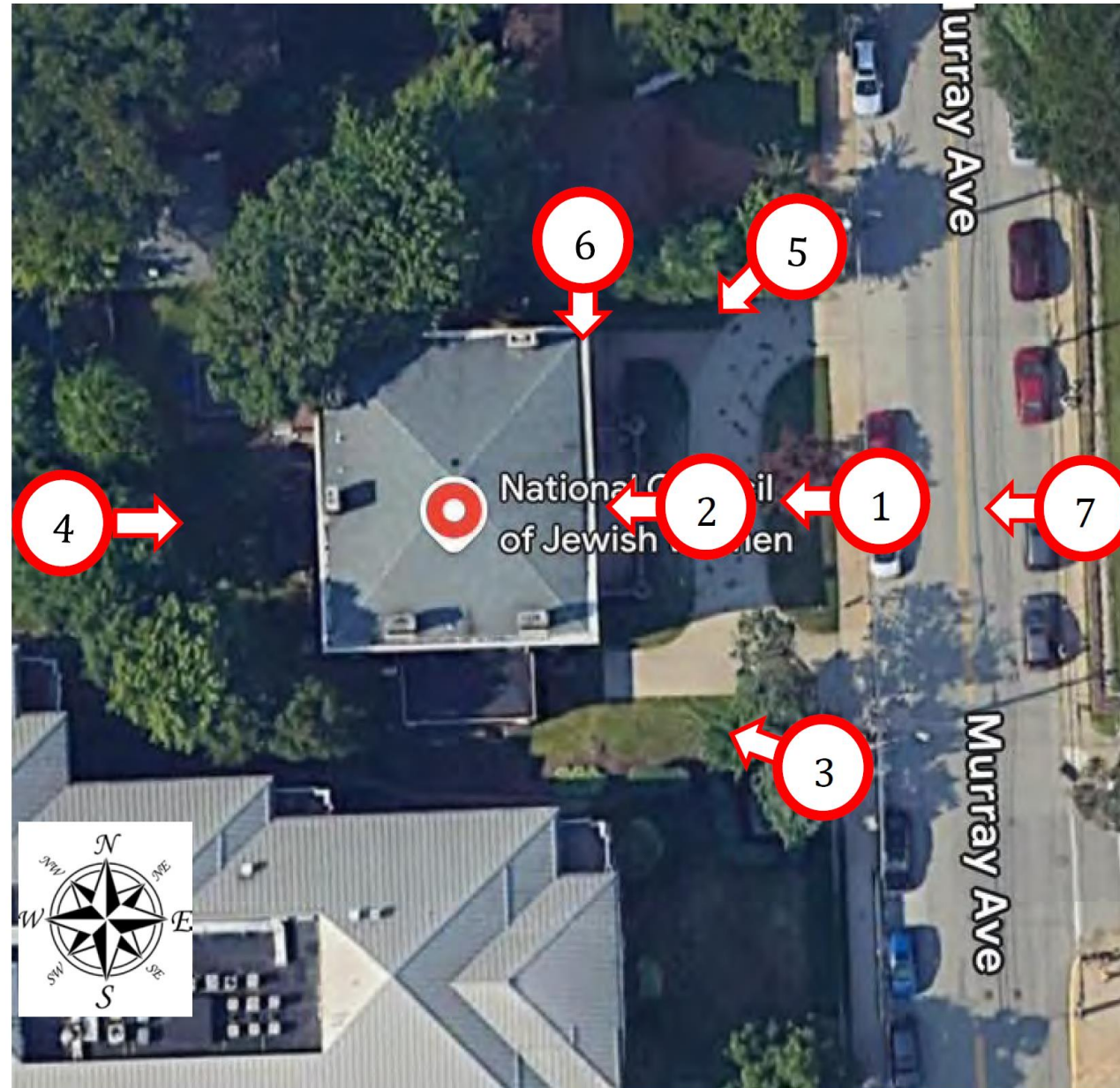


# Neighborhood Map





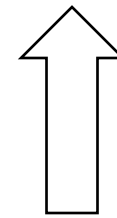
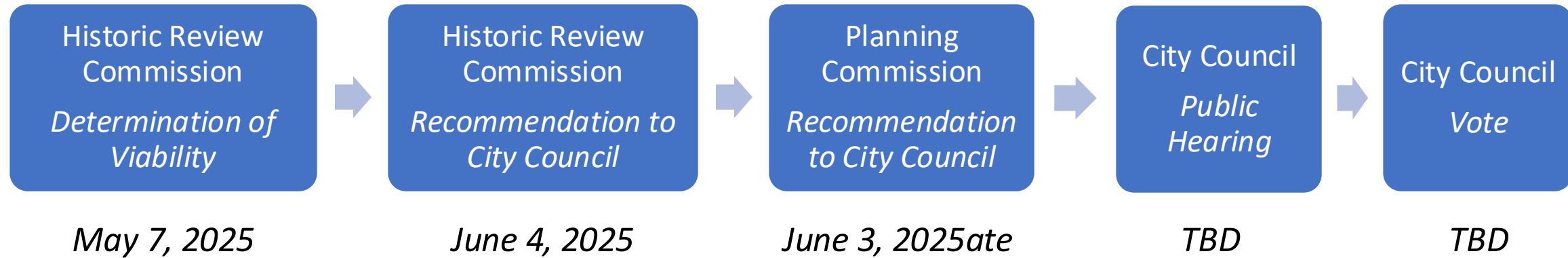
## Site Plan





Anathan House (1620 Murray Ave.) Primary Façade.

## *Where we are in the process*



*We are here*



## Criteria for historic designation

*2) Its identification with a person or persons who significantly contributed to the cultural, historic, architectural, archeological, or related aspects of the development of the City of Pittsburgh, State of Pennsylvania, Mid-Atlantic region, or the United States*

NCJW - Pittsburgh

*3) Its exemplification of an architectural type, style, or design distinguished by innovation, rarity, uniqueness, or overall quality of design, detail, materials, or craftsmanship*

Colonial Revival with heavy Italianate Influences

*4) Its identification as the work of an architect, designer, engineer, or builder whose individual work is significant in the history of development of the City of Pittsburgh, the State of Pennsylvania, the Mid-Atlantic region, or the United States*

Charles Rieger



Bessie Anathan

## *Integrity worthy of preservation or restoration*

Anathan House retains a high degree of integrity of location, design, workmanship, and materials.

It remains in its original location purchased by MacGilvray Shiras from Trustees of the Sixth Presbyterian Church and the design remains unaltered from Charles J. Rieger's original execution.

The house's integrity of workmanship and materials are evident in the detailed woodwork, patterned brick, and stonework of the primary and secondary facades as well as, to a lesser extent, the rear façade. Though the windows have been replaced with those comprised of newer material, all original openings have been maintained, and the form and mass are comparable to the originals.



*Anathan House - 1927.*



*Anathan House - 1963.*



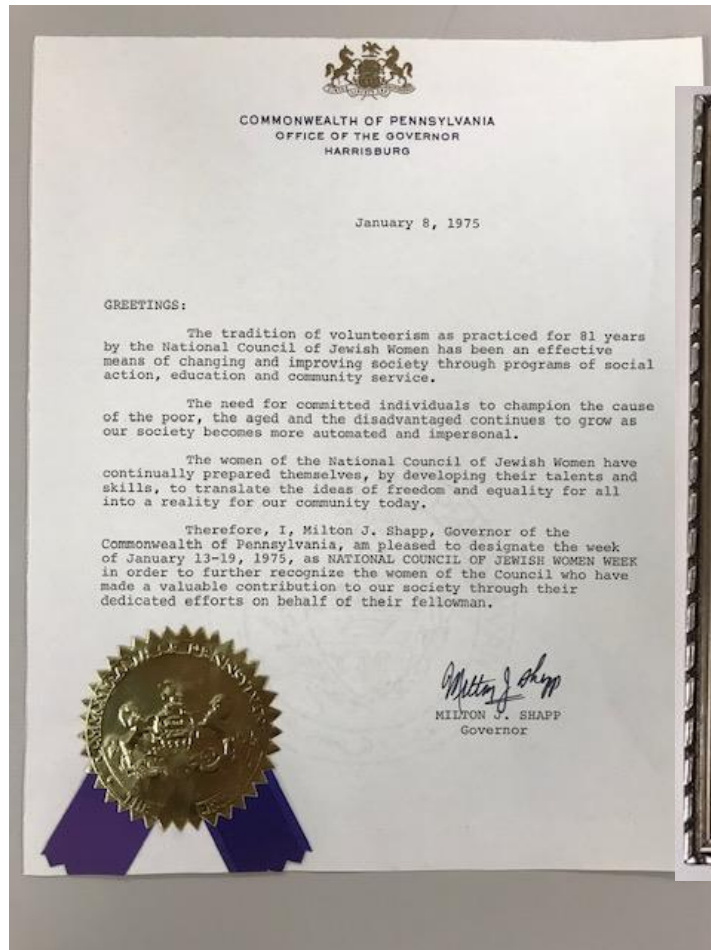
*Anathan House - 1974.*



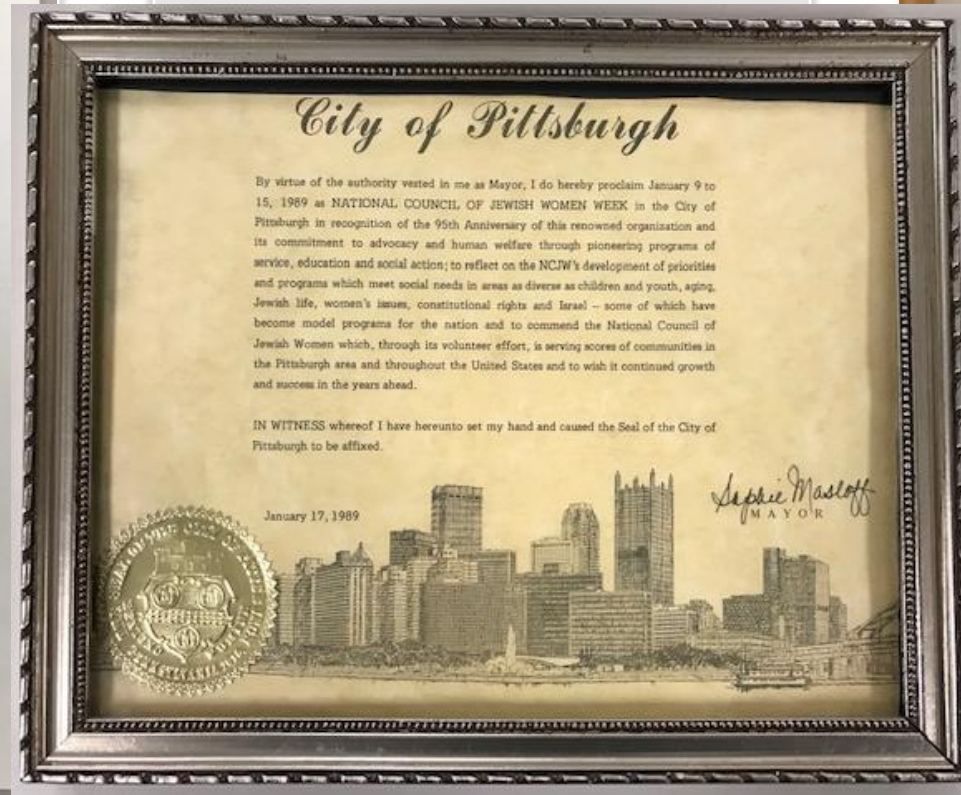
*Anathan House - 2025.*



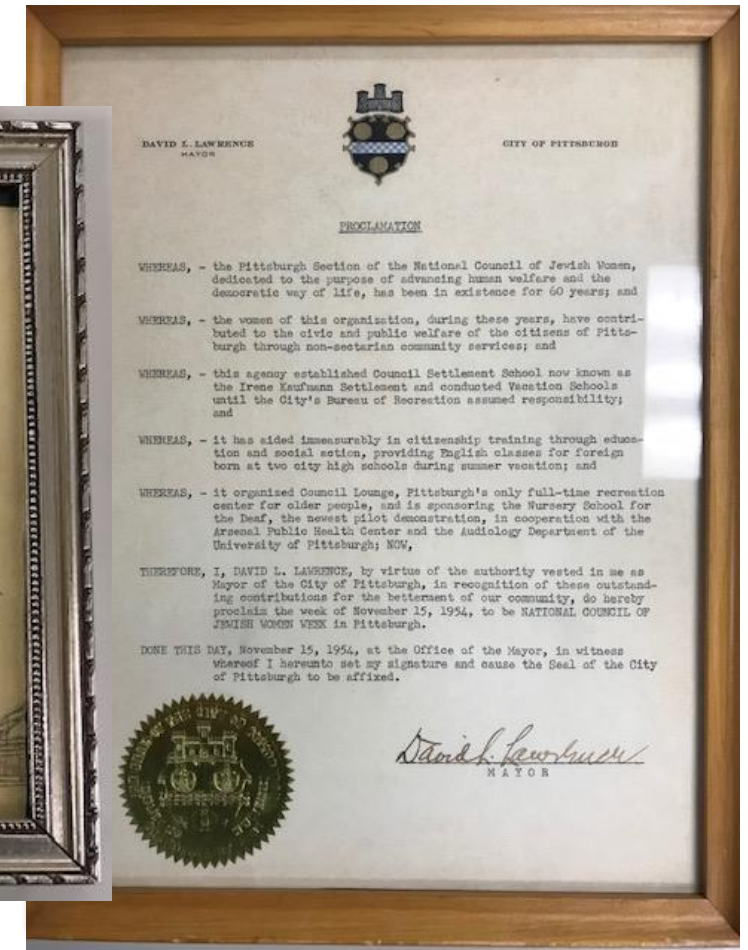
# Acknowledgement of Significance



State of Pennsylvania Proclamation – 1970s



City of Pittsburgh Proclamation – 1980s



City of Pittsburgh Proclamation – 1950s

