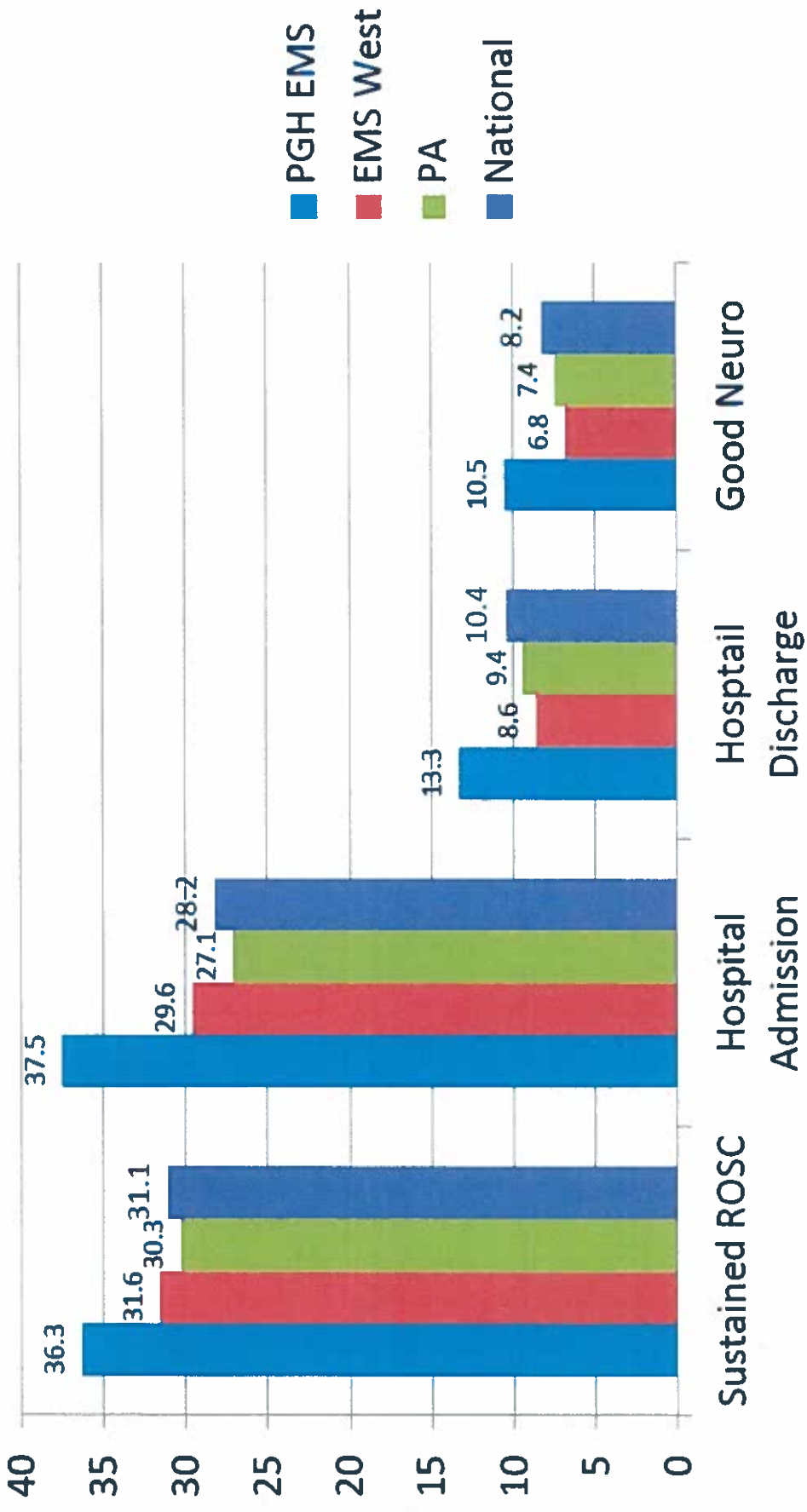


2017-2018

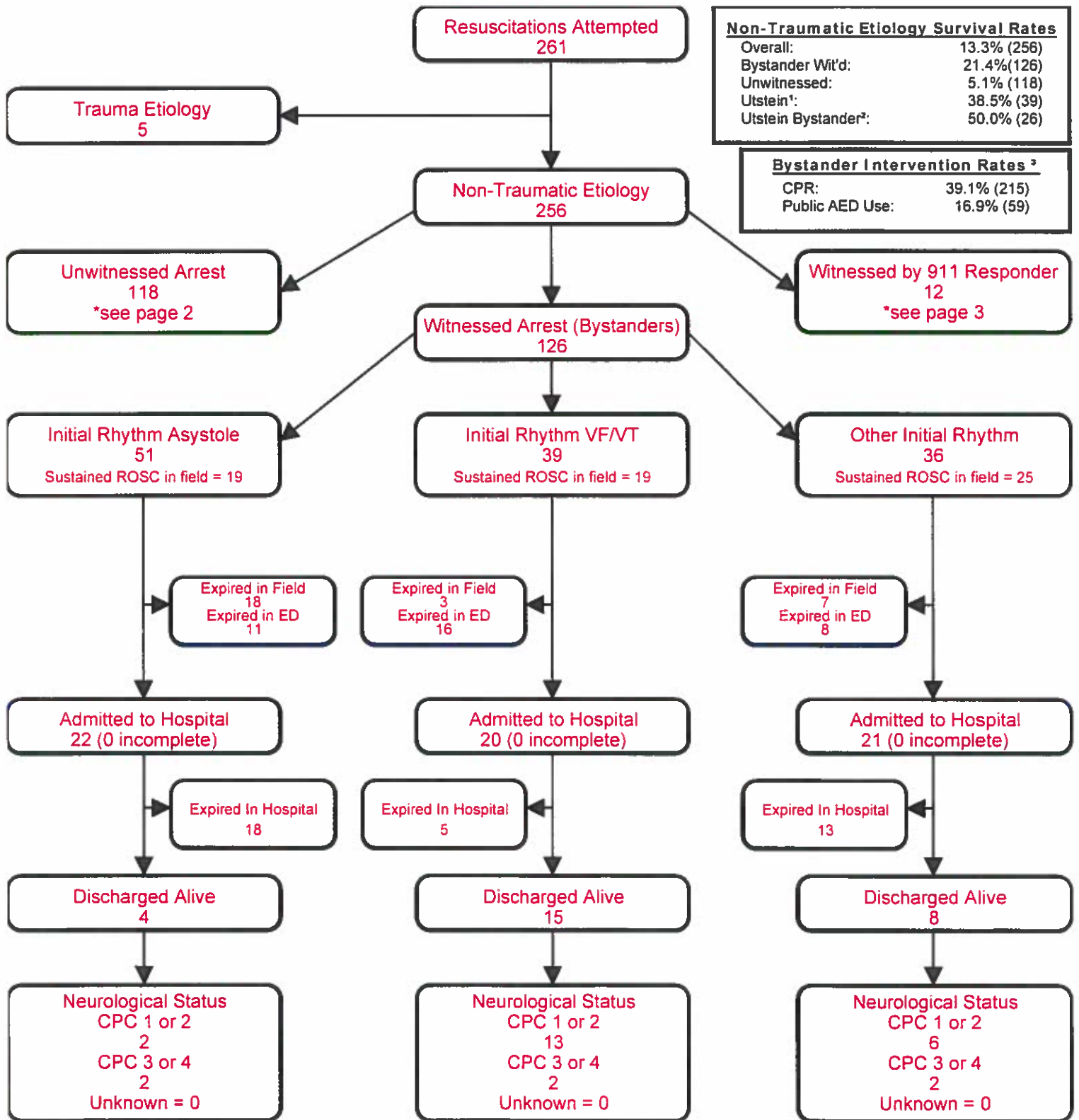
Cardiac Arrest CARES (2018)



Utstein Survival Report

City of Pittsburgh EMS

Service Date: 01/01/18 - 12/31/18



Non-Traumatic Etiology Survival Rates	
Overall:	13.3% (256)
Bystander Wit'd:	21.4% (126)
Unwitnessed:	5.1% (118)
Utstein ¹ :	38.5% (39)
Utstein Bystander ² :	50.0% (26)

Bystander Intervention Rates ³	
CPR:	39.1% (215)
Public AED Use:	16.9% (59)

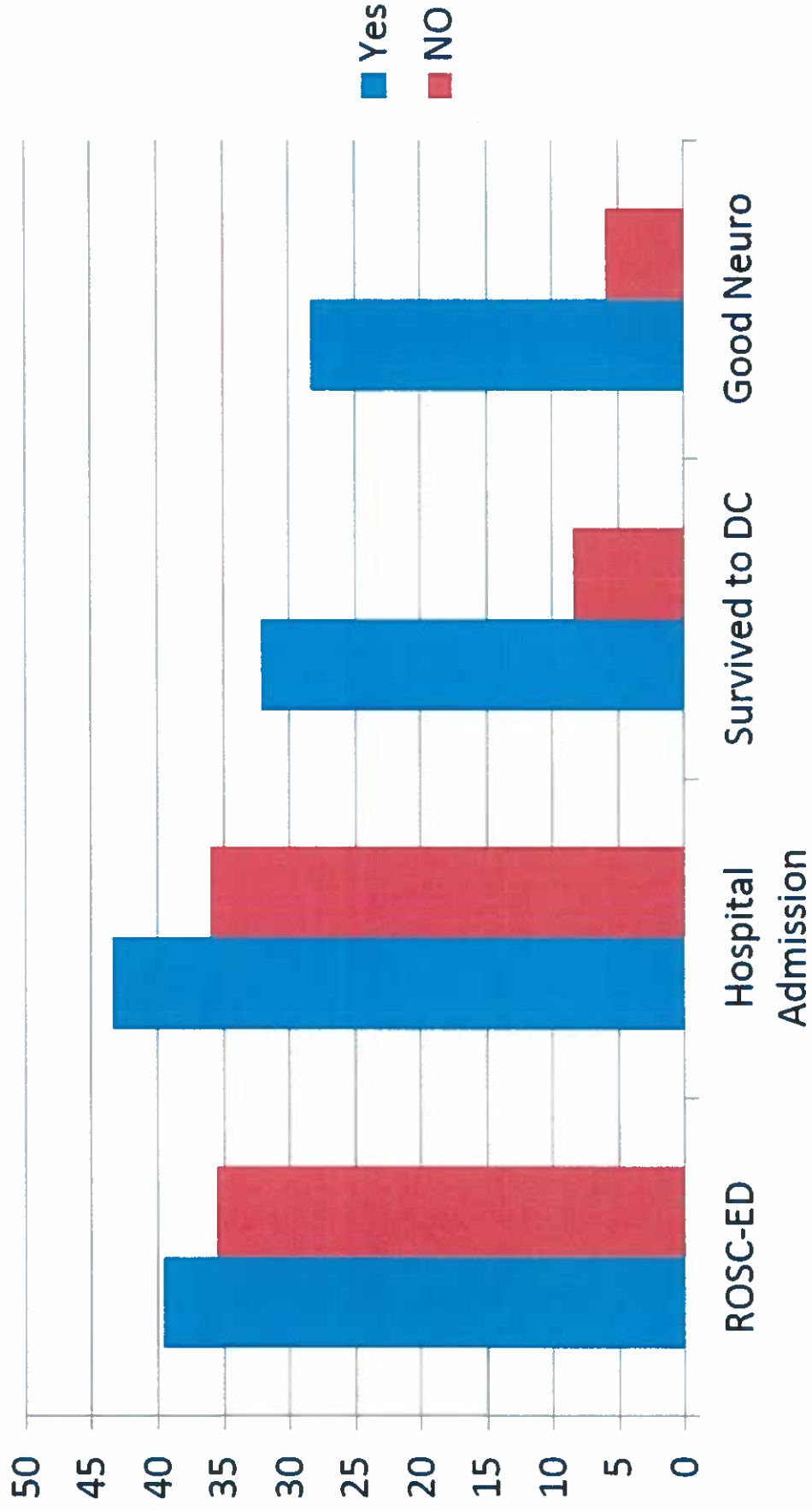
¹Utstein: Witnessed by bystander and found in shockable rhythm

²Utstein Bystander: Witnessed by bystander, found in shockable rhythm, and received some bystander intervention (CPR and/or AED application)

³Bystander CPR rate excludes 911 Responder Witnessed, Nursing Home, and Healthcare Facility arrests. Public AED Use rate excludes 911 Responder Witnessed, Home/Residence, Nursing Home, and Healthcare Facility arrests.

*Only data from the previous calendar year is fully audited. Data from the current calendar year is dynamic.

Shockable Rhythm



Utstein Bystander Survival

