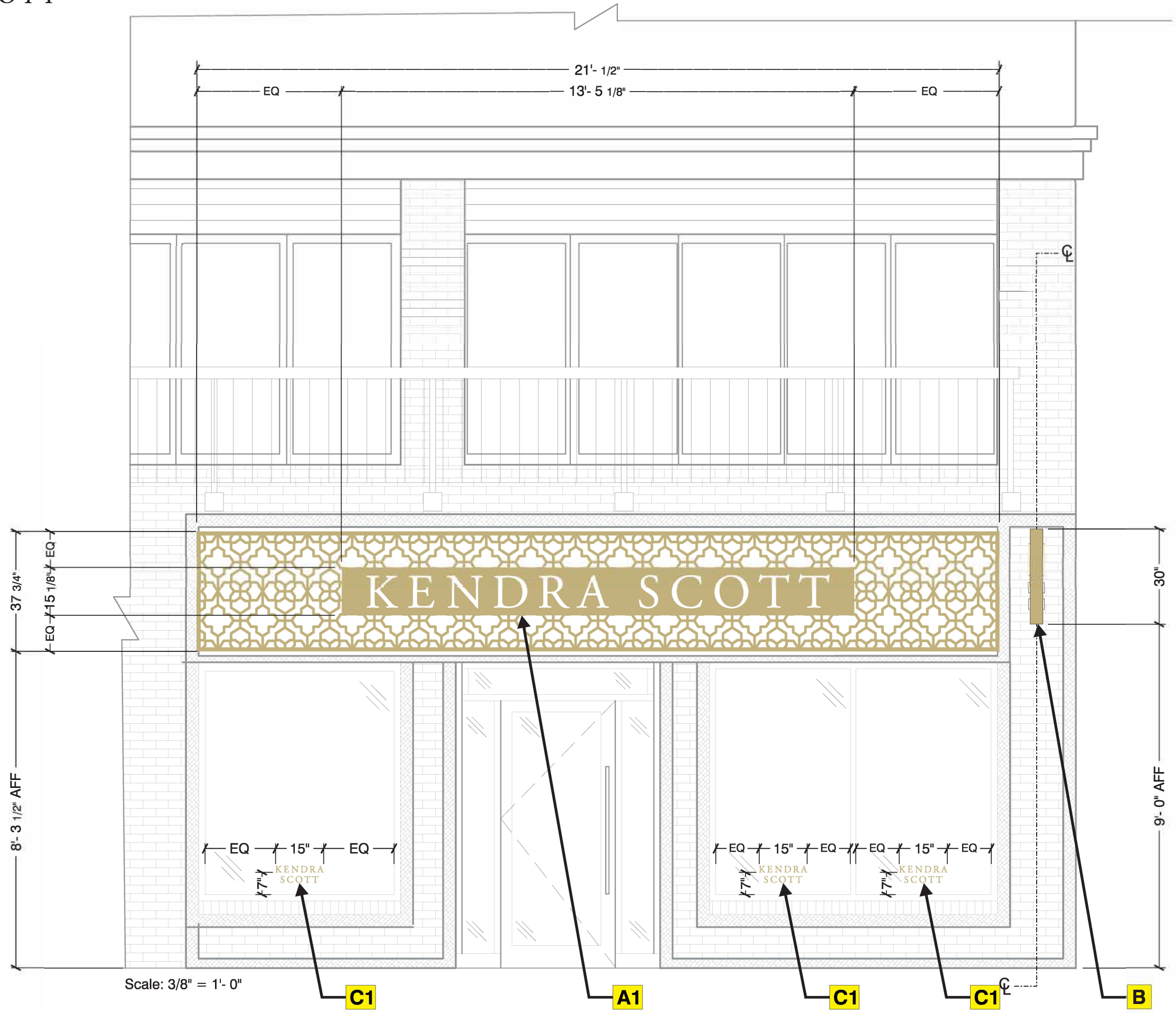


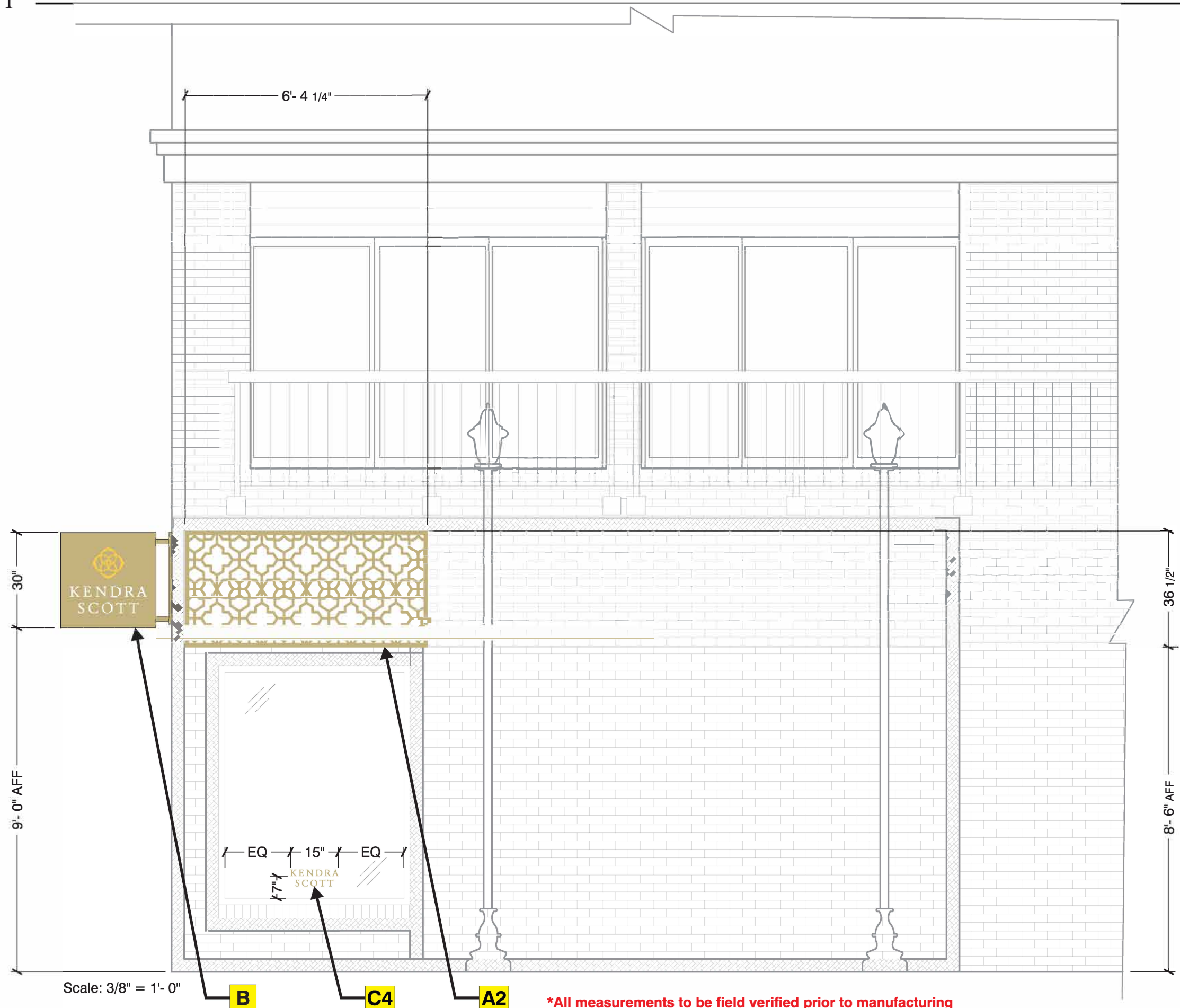
|           |  |
|-----------|--|
| <b>A1</b> | Reverse-lit channel letters on a backer panel. |
| <b>A2</b> | Backer panel.                                  |
| <b>B</b>  | D/F illuminated blade sign.                    |
| <b>C</b>  | 2" FCO letters.                                |
| <b>D</b>  | Set of reverse channel medallion (interior).   |

|         |               |
|---------|---------------|
| Sales:  | Lisa Koebel   |
| PM:     | Stacey Howard |
| Art:    | GED 1.20.20   |
| Drwg #: | 184208-1-10   |



|         |               |
|---------|---------------|
| Sales:  | Lisa Koebel   |
| PM:     | Stacey Howard |
| Art:    | GED 1.20.20   |
| Drwg #: | 184208-1-10   |





|         |               |
|---------|---------------|
| Sales:  | Lisa Koebel   |
| PM:     | Stacey Howard |
| Art:    | GED 1.20.20   |
| Drwg #: | 184208-1-10   |

Scale: 3/8" = 1'-0"

**B** **C4** **A2**

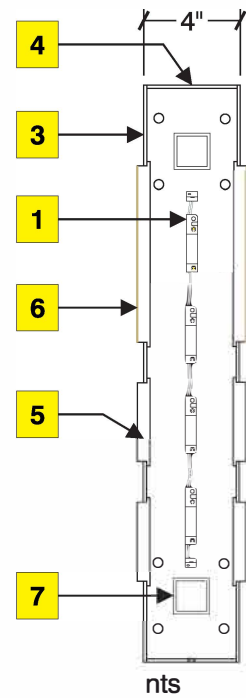
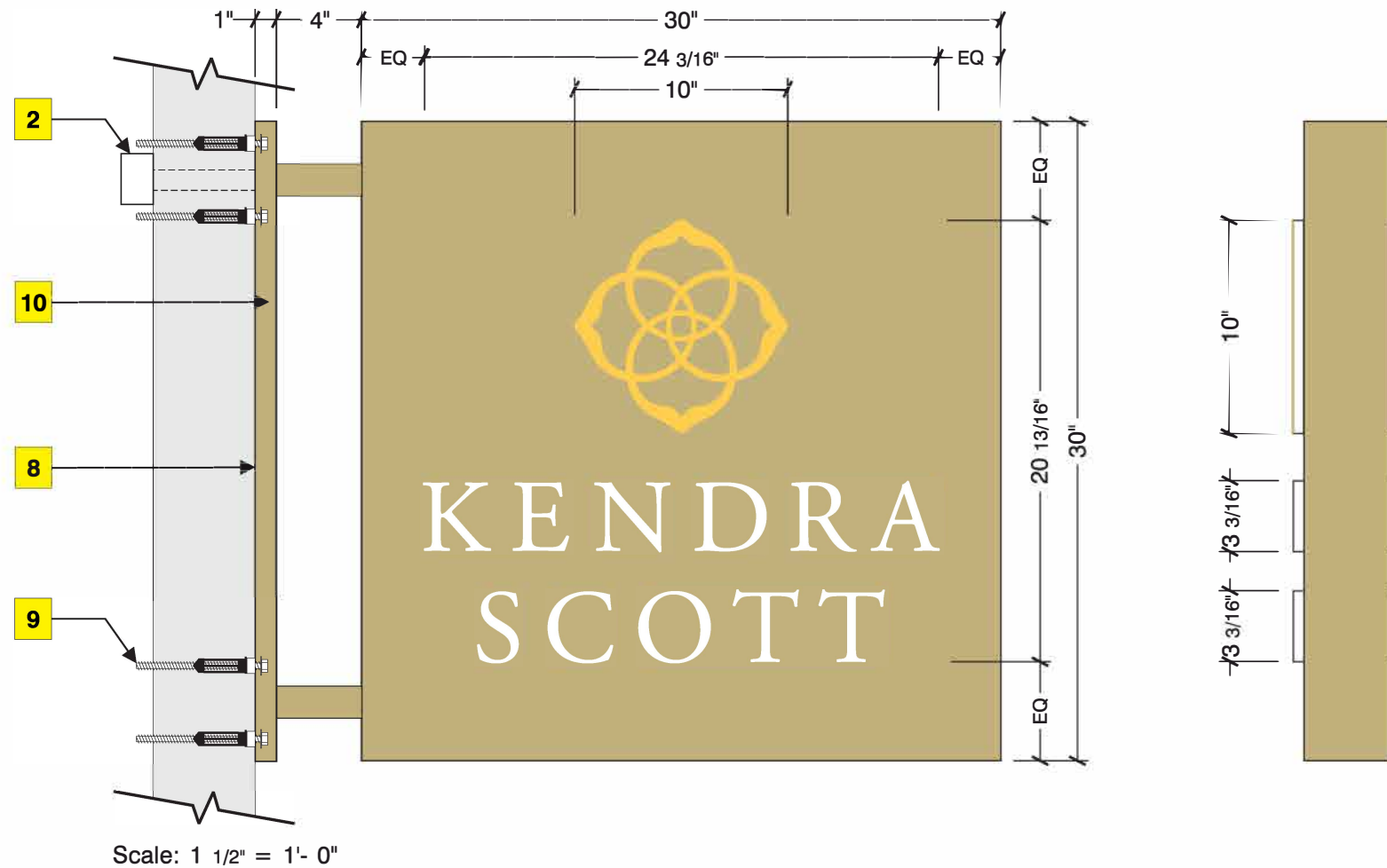
**\*All measurements to be field verified prior to manufacturing**





**Proposed 3/4 view**  
Signs rendered proportional to the photo

|         |               |
|---------|---------------|
| Sales:  | Lisa Koebel   |
| PM:     | Stacey Howard |
| Art:    | RTW 06.22.20  |
| Drwg #: | 184208-1-10   |



**Illumination**

- 1** Eagle 2's: WA-IP-02W71K150 LEDs (White 7100k).
- 2** Self-contained power supply.

**Cabinet**

- 3** .125 Aluminum w/ routed faces painted MP 20352 Victorian Gold Metallic. Cabinet painted white inside.
- 4** .125" x 4" Aluminum returns painted MP 20352 Victorian Gold Metallic.

**Letters**

- 5** 3/4" Thick white acrylic push-thru letters & logo (1/2" reveal).
- 6** Translucent vinyl to match MP 008873 May Day applied first surface to medallion logo.

**Mounting**

- 7** 1 1/2" Square aluminum tubing (external framing painted MP 20352 Victorian Gold Metallic. Tubing welded to mounting plate).
- 8** 29 7/8" x 4" x 1/4" thick mounting plate primed white. Mounting plate has 3/8" dia. typ. mounting holes.
- 9** 3/8" x 3" x 2 1/2" concrete fasteners
- 10** Aluminum trim to cover mounting plate and fasteners. Cover painted MP 20352 Victorian Gold Metallic. Cover secured with 3/8" x 3/4" metal fasteners painted MP 20352 Victorian Gold Metallic.

\*See page 10 of 12 for wall section.

**Note:**  
All illumination to be even lighting without any "hotspots" on surfaces.  
Electric to exit through tube bracket.

**Note:**  
Electric & proper blocking supplied by others.

**Mounting**

|  |   |  |   |
|--|---|--|---|
|  | <b>Wedge anchors</b><br>For use in masonry applications.  |  | <b>Lag screw</b><br>Wood lags for solid wood backing.<br>Concrete lags for solid masonry applications.<br>Only when specified by NAS. |
|  | <b>Thru-Bolt w/ (Preferred)</b><br>Hollow walls w/ rear access. Backing- U-Channel, angle iron or wood. |  | <b>Toggle bolt</b><br>For use in hollow walls w/ suitable wall materials.   |
|  | <b>Stud Mounted</b>   |  | <b>Red Head Hilti Fasteners</b><br>w/ composite screen & nylon spacer   |
|  | <b>Tapcon</b><br>Concrete screw anchors   |  |   |

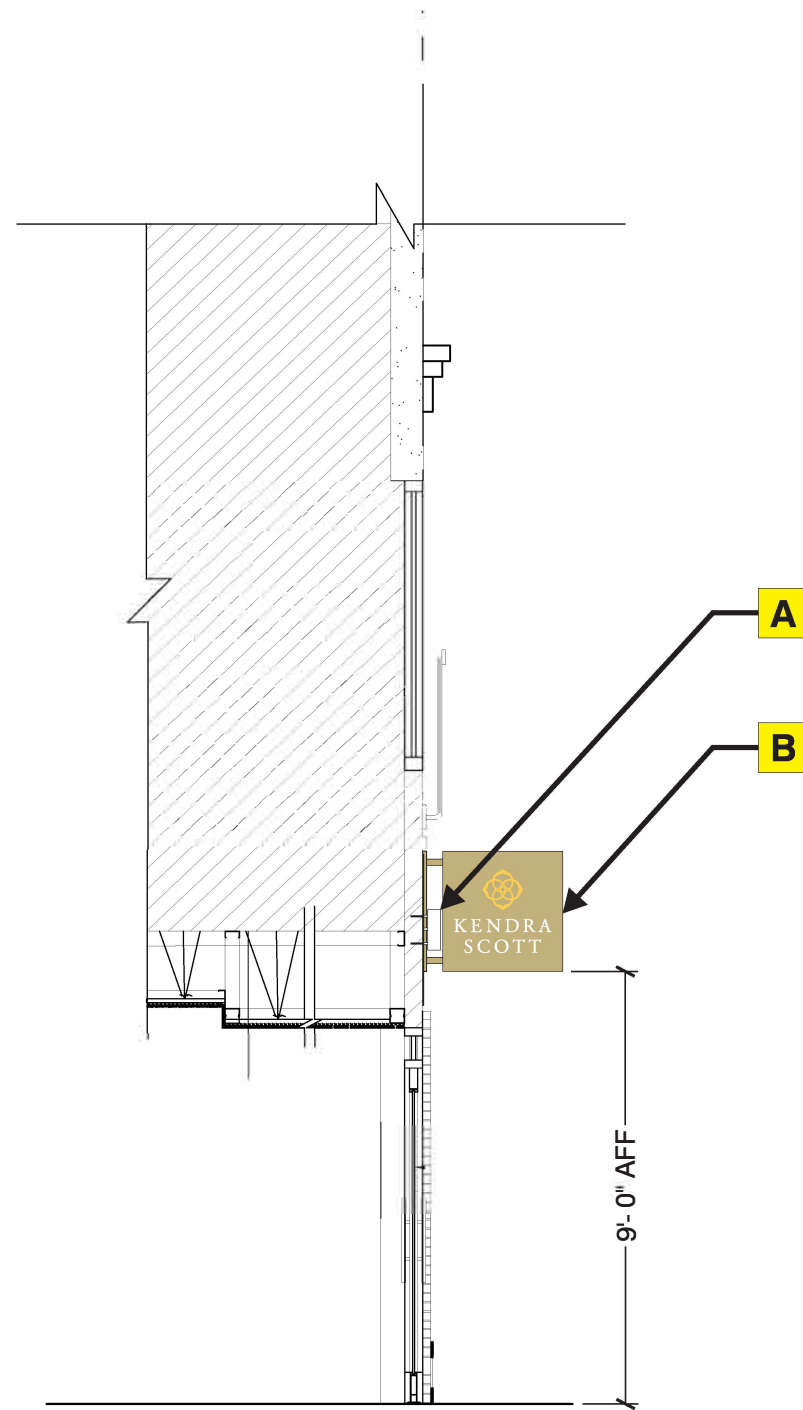
Exact mounting method TBD.

**Colors to match**

- MP 008873 May Day
- MP 20352 Victorian Gold Metallic

|         |               |
|---------|---------------|
| Sales:  | Lisa Koebel   |
| PM:     | Stacey Howard |
| Art:    | GED 1.20.20   |
| Drwg #: | 184208-1-10   |





Scale: 1/4" = 1'- 0"

|         |               |
|---------|---------------|
| Sales:  | Lisa Koebel   |
| PM:     | Stacey Howard |
| Art:    | GED 1.20.20   |
| Drwg #: | 184208-1-10   |



WE'RE HIRING!

[KENDRASCOTT.COM/CAREERS](http://KENDRASCOTT.COM/CAREERS)



KENDRA SCOTT



WE'RE HIRING!

[KENDRASCOTT.COM/CAREERS](https://www.kendrascott.com/careers)



KENDRA SCOTT







August 20, 2020

Karina Ricks, Director  
Department of Mobility & Infrastructure  
611 Second Ave.  
Pittsburgh, PA 15219

RE: Encroachment for Kendra Scott projection sign

On behalf of Kendra Scott located at 5505 Walnut Street, we are requesting an encroachment permit allowing a projection sign to encroach 35" over the sidewalk. The sign will not prohibit pedestrian traffic or have a bearing on street traffic.

This blade sign style is part of the branding associated nationally with Kendra Scott. It is our belief that this request will not have an adverse effect on the neighborhood.

Respectfully submitted,

Cindy Krizinsky, Office Manager /  
Permit Procurement Coordinator



# CITY OF PITTSBURGH

Department of Mobility and Infrastructure

William Peduto, Mayor

Karina Ricks, Director

## Application for an Encroachment on City Dedicated Right-Of-Way

Date 8-20-20

Applicant Name Kendra Scott (tenant)

Property Owner's Name (if different from Applicant) WALNUT STREET PROPERTIES

Address 4224 E. Playa De Coronado, Tucson, AZ 85718

Phone Number: 5204658817 Alternate Phone Number: \_\_\_\_\_

Location of Proposed Encroachment: 5505 Walnut St.

Ward: 7 Council District: 8 Lot and Block 52

What is the properties zoning district code? LNC (zoning office 255-2241)

Is the existing right-of-way, a street or a sidewalk? Sidewalk

Width of Existing Right-of-Way (sidewalk or street): 10' 4 1/2" (Before encroachment)

Length of Existing Right-of-Way (sidewalk or street): 24' (Before encroachment)

Width of Proposed Encroachment: 5" in front of store (109' 4" block)

Length of Proposed Encroachment: 35"

Number of feet the proposed object will encroach into the ROW: 35"

Reason for application: Kendra Scott Blade Sign

PROJECTS 35" OVER SIDEWALK

walking traffic will not be affected by encroachment.

**\*\*\*PLEASE ATTACH ALL ADDITIONAL INFORMATION\*\*\***

# EnCon Services, Inc.

## Sign Design Calculations

Job Description  
 Kendra Scott  
 5505 Walnut Street  
 Pittsburgh, Pennsylvania 15232  
 30" x 30" Blade Sign  
 Design per 2015 International Building Code  
 ASCE 7-10, Load Case: D + 0.6W

PREPARED BY:  
 EnCon Services, Inc., PA COA-4311631  
 PO Box 3613, Apollo Beach, FL 33572  
 813-655-3373  
 Nathan P. Presnell, PE 087480

DATE SIGNED:  
 7/8/2020

Risk Category II  
 Kzt 1  
 Exposure B  
 Kd 0.85  
 Kz 0.57  
 V 115 mph  
 Cf 1.82  
 G 0.85  
 Number of Poles = 2 1  
 Ground Snow Load, Pg 30 (psf)  
 Wind Pressure (PSF) 25



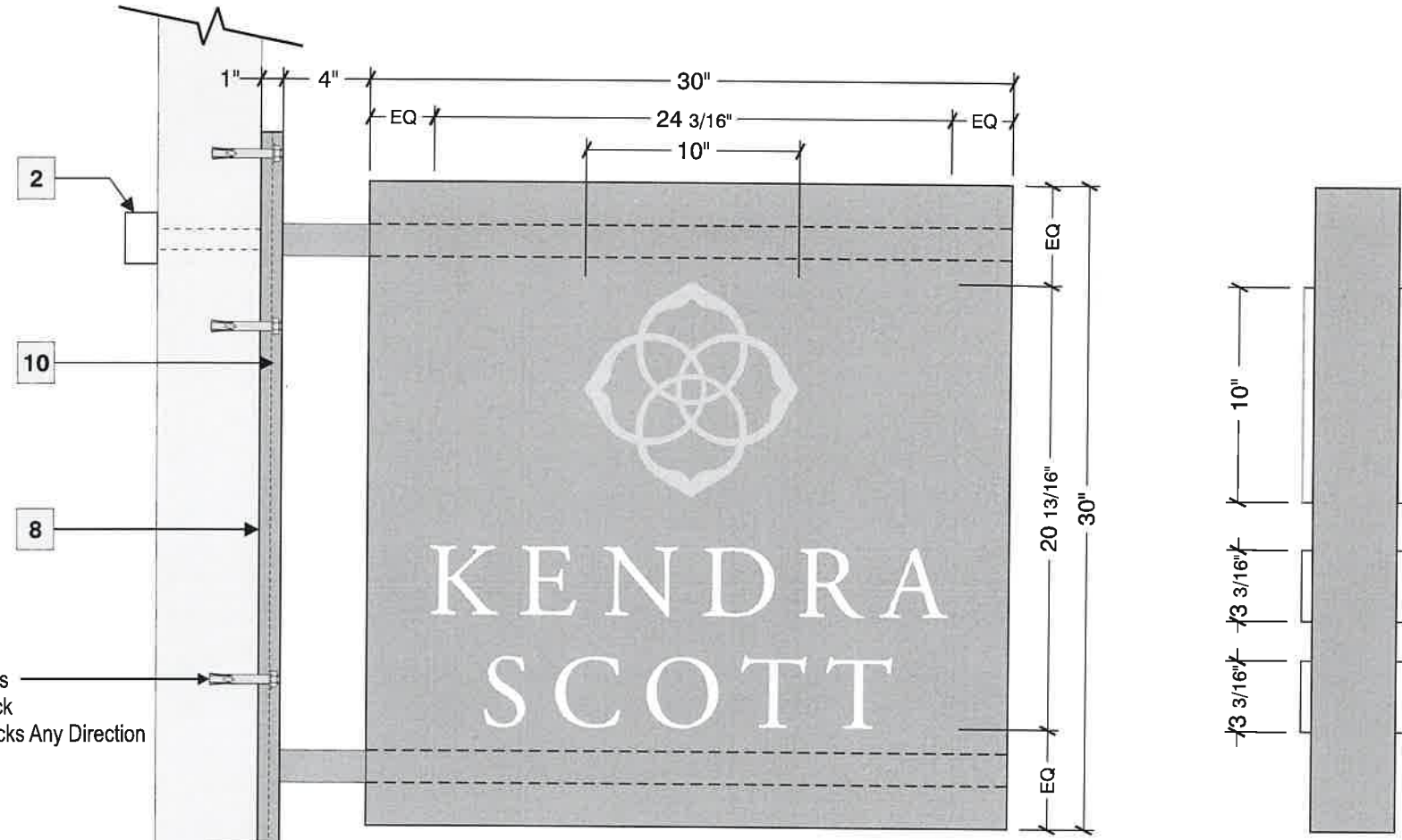
| Sign                  | Area (sf) | Distance to Center (ft) | P = Force (lb) | Moment (ft-lb) |
|-----------------------|-----------|-------------------------|----------------|----------------|
| Sign                  | 6.25      | 2.17                    | 95             | 206            |
| Estimated Sign Weight |           | 1.67                    | 63             | 104            |
|                       |           |                         | 0              | 0              |
| Poles                 | 0.09      | 0.25                    | 1              | 0              |
|                       |           | <b>Totals</b>           | <b>159</b>     | <b>311</b>     |

Required Flexural Strength (kip-ft) 0.21 per pole  
 Provided Flexural Strength (kip-ft) 0.45 1-1/2" x 1-1/2" x 1/4" Sq, Alum. Tube, 6061-T6  
 Flexural Ratio 0.46

### Mount Plate Design

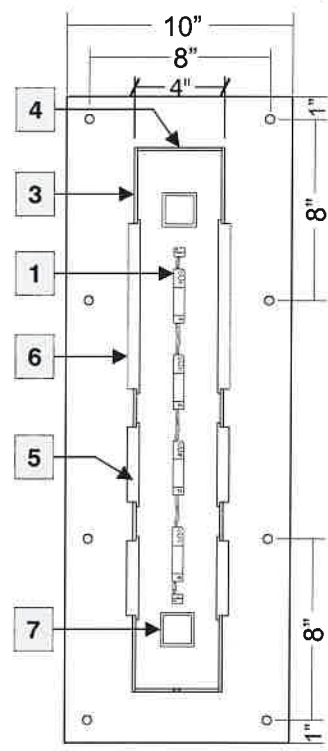
|                                 |     |  |
|---------------------------------|-----|--|
| Distance Between Bolts          | 8   | 117 Tension on Bolts (LB)<br>Use 3/8" Dia. Sleeve Anchor<br>1-1/2" Embedment Into Brick<br>Min. Edge Distance = 2 Bricks Any Direction |
| Number of Bolts per Mount Plate | 8   |  |
| Tributary Plate Width B (IN)    | 10  | 0.37 Plate thickness (IN)<br>Use 1/2" Alum. Plate, 6061-T6   |
| Bolt Spacing d (IN)             | 8   |  |
| Diameter of Pole (IN)           | 1.5 |  |

KENDRA SCOTT  
5505 Walnut Street  
Pittsburgh, PA 15232



(8) 3/8" Dia. Sleeve Anchors  
1-1/2" Embedment Into Brick  
Min. Edge Distance = 2 Bricks Any Direction

Scale: 1 1/2" = 1'- 0"



**Illumination**

|   |  |
|---|--|
| 1 | Eagle 2's: WA-IP-02W71K150 LEDs (White 7100k). |
| 2 | Self-contained power supply.                   |

**Cabinet**

|   |   |
|---|---|
| 3 | .125 Aluminum w/ routed faces painted MP 20352 Victorian Gold Metallic. Cabinet painted white inside. |
| 4 | .125" x 4" Aluminum returns painted MP 20352 Victorian Gold Metallic.                                 |

**Letters**

|   |   |
|---|---|
| 5 | 3/4" Thick white acrylic push-thru letters & logo (1/2" reveal).                      |
| 6 | Translucent vinyl to match MP 008873 May Day applied first surface to medallion logo. |

**Mounting**

|    |   |
|----|---|
| 7  | 1-1/2" x 1-1/2" x 1/4" Square aluminum tubing (external framing painted MP 20352 Victorian Gold Metallic. Tubing welded to mounting plate.  |
| 8  | 1/2" thick aluminum mounting plate primed white.  |
| 9  | not used  |
| 10 | Aluminum trim to cover mounting plate and fasteners. Cover painted MP 20352 Victorian Gold Metallic. Cover secured with 3/8" x 3/4" metal fasteners painted MP 20352 Victorian Gold Metallic. |

**Note:**  
All illumination to be even lighting without any "hotspots" on surfaces. Electric to exit through tube bracket.

**Note:**  
Electric & proper blocking supplied by others.

**Colors to match**

|   |                     |   |                                     |
|---|---------------------|---|-------------------------------------|
|  | MP 08873<br>May Day |  | MP 20352<br>Victorian Gold Metallic |
|---|---------------------|---|-------------------------------------|

NOTES:  
MATERIALS:  
ALL JOINTS TO BE WELDED ALL AROUND  
GRADE 6061-T6 AL. STRUCTURAL SHAPES

SIGN TO BE CONSTRUCTED TO NEC 600 STANDARD  
SIGN TO BEAR UL LABEL  
SIGN TO HAVE ELECTRICAL DISCONNECT ON THE EXTERIOR


DESIGN PARAMETERS:  
2015 INTERNATIONAL BUILDING CODE  
ASCE 7-10  
WIND SPEED DATA  
1. VULT WIND SPEED = 115 MPH  
2. RISK CATEGORY II  
3. WIND EXPOSURE B

GROUND SNOW LOAD, Pg = 30 PSF

ENCON SERVICES, INC.  
P.O. BOX 3613  
APOLLO BEACH, FL 33572  
813-655-3373  
PENNSYLVANIA COA-4311631  
ENCON@ME.COM

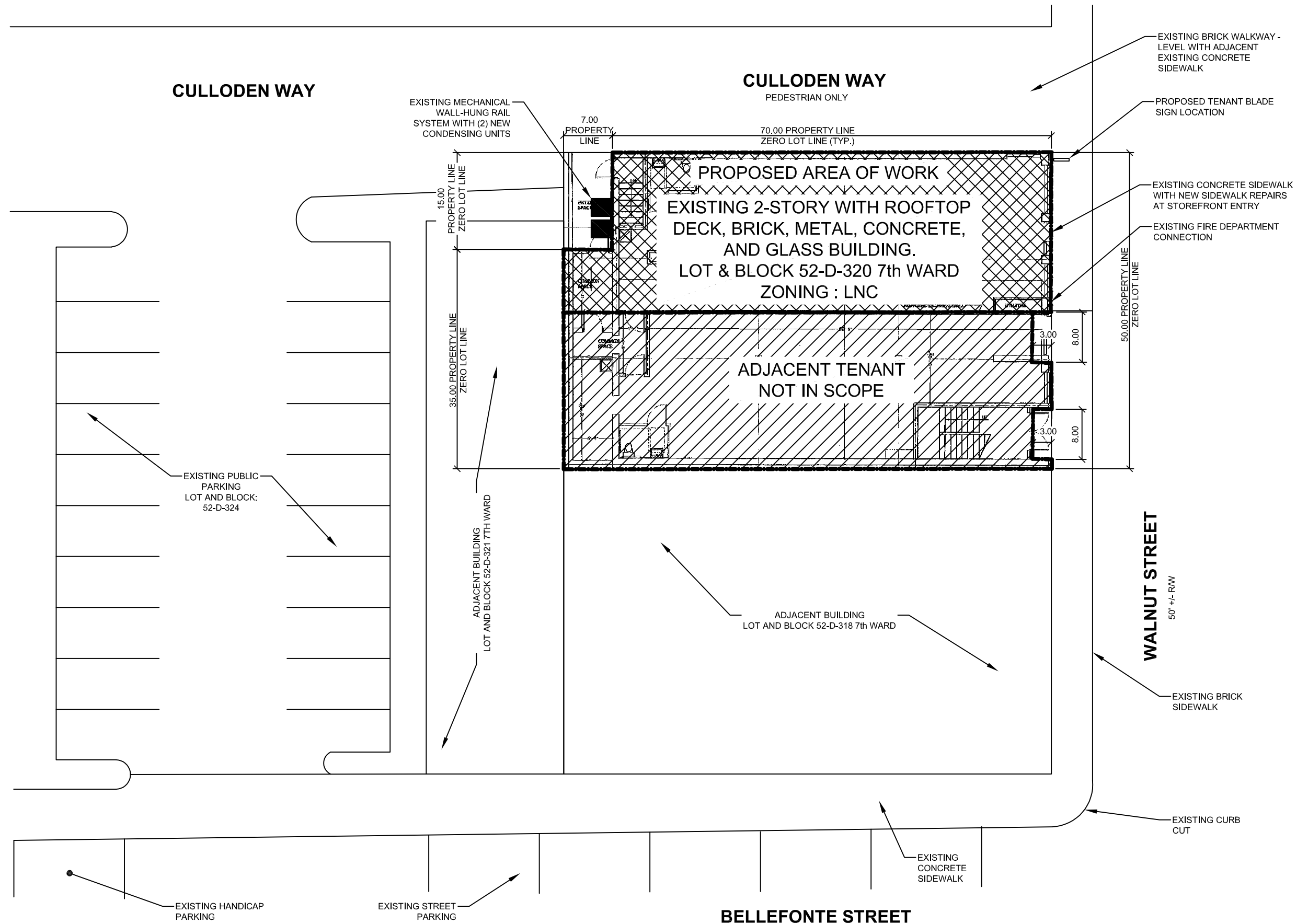


NATHAN P. PRESNELL, P.E. 087480  
DATE SIGNED: 7/8/2020



|         |               |
|---------|---------------|
| Sales:  | Lisa Koebel   |
| PM:     | Stacey Howard |
| Art:    | GED 1.20.20   |
| Drwg #: | 184208-1-12   |





**1**  
SITE

**SITE PLAN**  
SCALE: 1/16" = 1'-0"