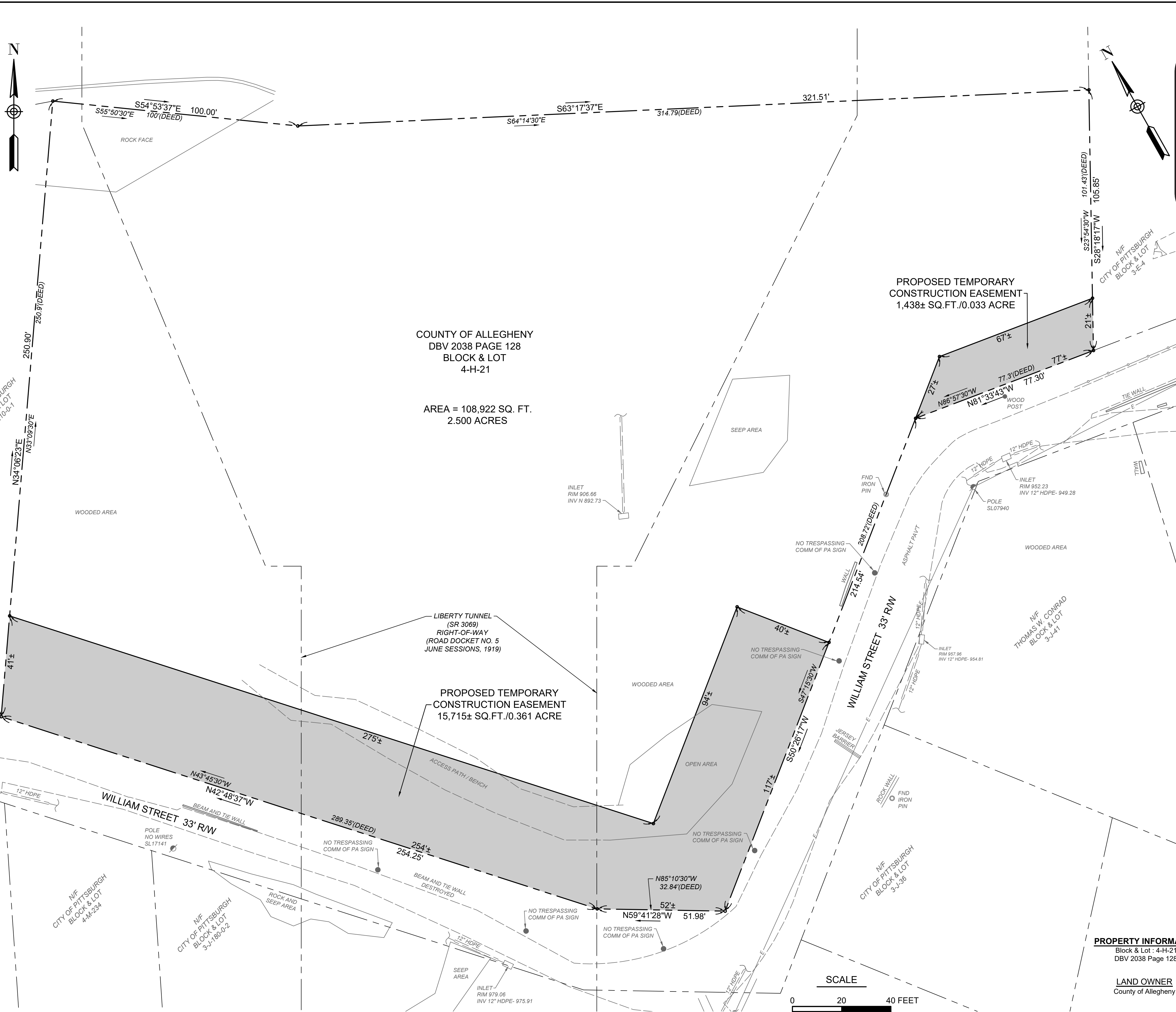


VICINITY MAP

SCALE: 1"=1000'



COUNTY OF ALLEGHENY
DBV 2038 PAGE 128
BLOCK & LOT
4-H-21

AREA = 108,922 SQ. FT.
2.500 ACRES

PROPOSED TEMPORARY
CONSTRUCTION EASEMENT
1,438± SQ.FT./0.033 ACRE

PROPOSED TEMPORARY
CONSTRUCTION EASEMENT
15,715± SQ.FT./0.361 ACRE

AREAS

BLOCK & LOT 4-H-21
GROSS AREA = 108,922 SQ.FT./2.500 ACRES

GENERAL NOTES

- 1.) Private property lines are plotted from the deed of record, recorded subdivision or lot plans, existing topographical features and limited field data. Private property lines were not surveyed by the professional land surveyor responsible for the project.
- 2.) Bearings and distances shown on this plan are derived from GPS observations on the Pennsylvania State Plane Coordinate System, South Zone, NAD 1983.
- 3.) Topographic features are indicated in accordance with a survey performed by others and are based on the North American Vertical Datum of 1988, NAVD 88.
- 4.) Property is subject to all prior conveyances, easement, reservations and conditions recited in all prior conveyances.
- 5.) Underground facilities, structures and utilities have been plotted by others from a combination of field evidence, available plans and field markings. Therefore, their locations and sizes must be considered approximate only. There may be other underground facilities whose existence is presently unknown.

EXHIBIT

DATE: _____

REVISIONS: _____

A

Campbells Run Business Center
300 Business Center Drive
Suite 304
Pittsburgh, PA 15205
Office: 412-785-2433
Fax: 412-785-2295
www.mbe-eng.com

mbe
monahan basin
engineers

COUNTY OF ALLEGHENY
PLAN OF PROPERTY
SITUATE IN
18TH WARD, CITY OF PITTSBURGH
ALLEGHENY COUNTY, PENNSYLVANIA
PREPARED FOR
CITY OF PITTSBURGH

SCALE:	AS SHOWN
DATE:	May 12, 2022
DRAWN BY:	BPP
CHECKED BY:	BMT
APPROVED BY:	BMT

PROJECT NUMBER:
3384-02

FILE NAME:
3384-02 - County of Allegheny - Plan of Property.dwg

SHEET NUMBER:
1 OF 1

PROPERTY INFORMATION
Block & Lot: 4-H-21
DBV 2038 Page 128

LAND OWNER
County of Allegheny

