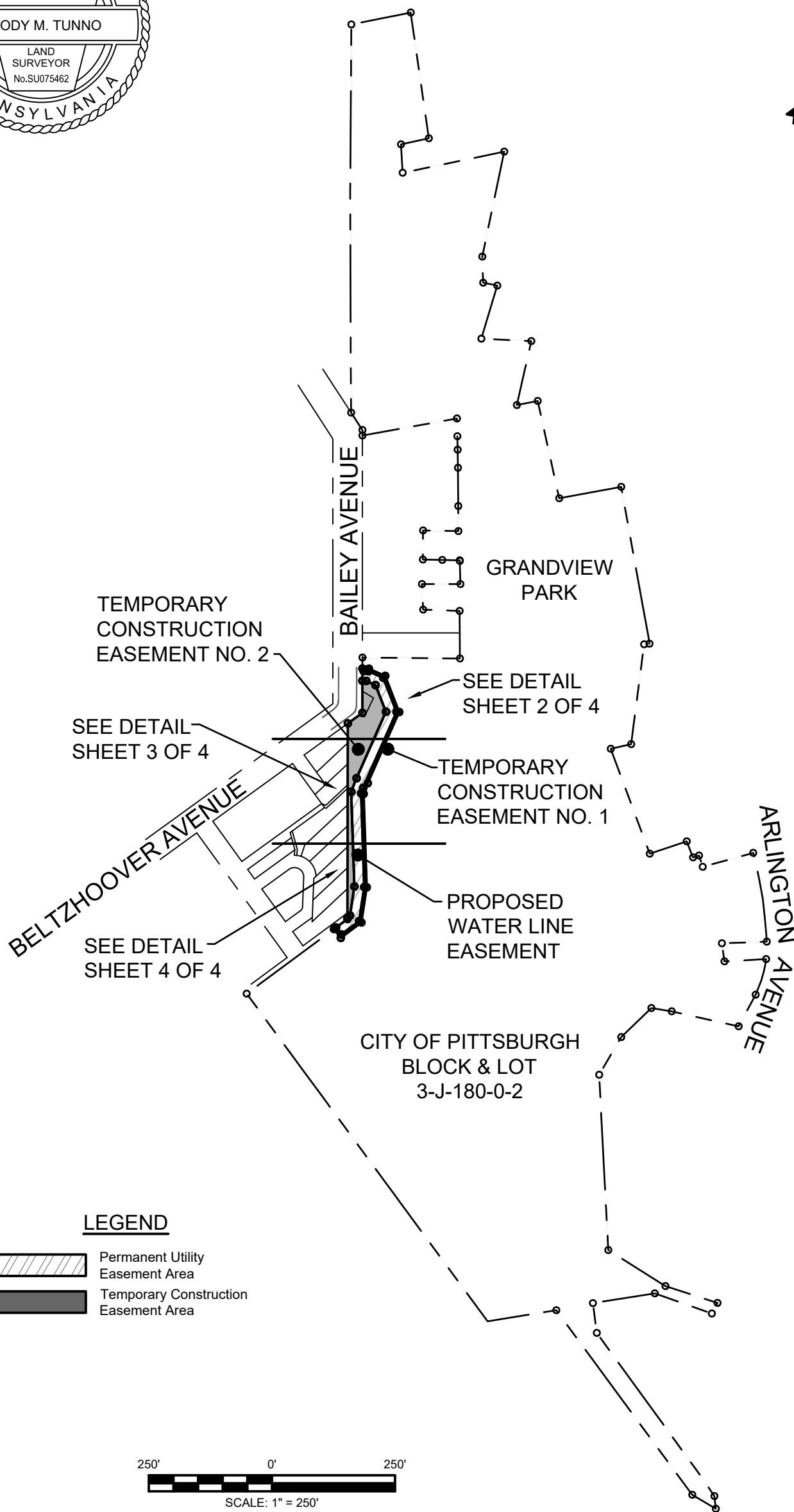
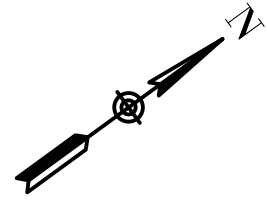


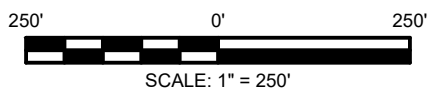
**EXHIBIT A**

**(Plan)**



**LEGEND**

- Permanent Utility Easement Area
- Temporary Construction Easement Area



REVISIONS			
NO	DESCRIPTION	BY:	DATE:

**mbe**  
 monaloh basin  
 engineers  
 Campbells Run Business Center  
 300 Business Center Drive  
 Suite 304  
 Pittsburgh, PA 15205  
 Office: 412-788-2433  
 Fax: 412-788-2295  
 www.mbe-eng.com

PROJECT: PWSA PROJECT NO.: 2023-200-110-0  
 2023 WATER RELAY PROJECT  
 ZUZU CIRCLE  
 PARCEL 3-J-180-0-2 WATER LINE EASEMENT EXHIBIT

CLIENT: **PGH<sub>2</sub>O**  
 Pittsburgh Water & Sewer Authority

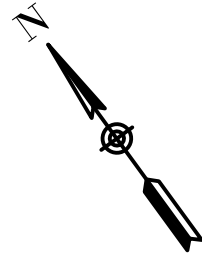
**gai consultants**  
 600 Cranberry Woods Drive  
 Suite 400  
 Cranberry Township, PA 16066  
 Office: 724-772-2011  
 www.gaiconsultants.com

SCALE:	AS SHOWN
DATE:	04/05/2024
DRAWN BY:	BPP
CHECKED BY:	BMT
PROJECT NUMBER:	3132-21
FILE NAME:	3132-21 - Parcel 3-J-180-0-2.dwg
SHEET NUMBER	1 OF 4



GRANDVIEW PARK

CITY OF PITTSBURGH  
BLOCK & LOT  
3-J-180-0-2

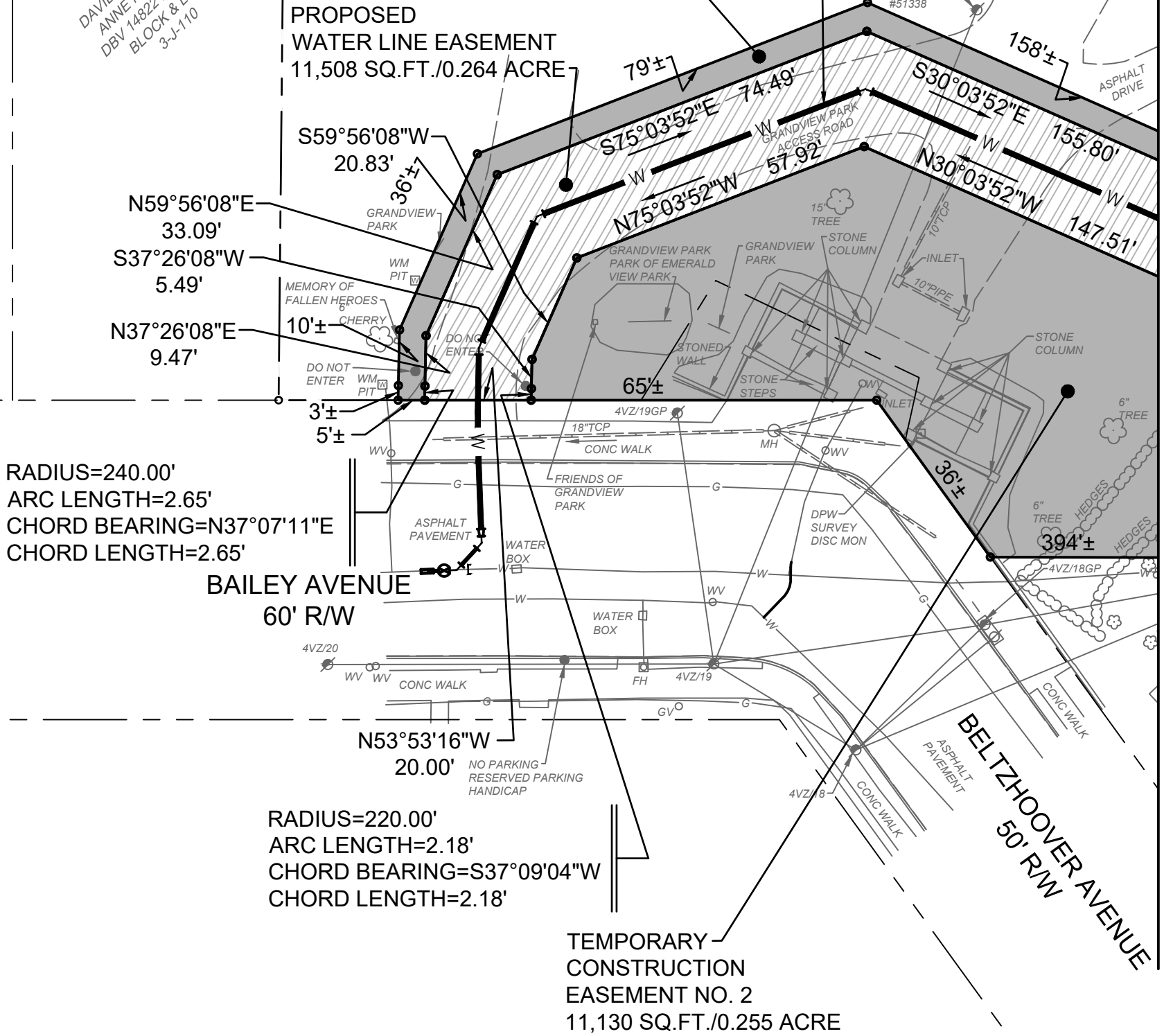


N/F  
DAVID BETTS AND  
ANNE MÜNDELL  
DBV 14822 PAGE 76  
BLOCK & LOT  
3-J-110

TEMPORARY  
CONSTRUCTION  
EASEMENT NO. 1  
3,173 SQ.FT./0.073 ACRE

PROPOSED  
WATER LINE

PROPOSED  
WATER LINE EASEMENT  
11,508 SQ.FT./0.264 ACRE



RADIUS=240.00'  
ARC LENGTH=2.65'  
CHORD BEARING=N37°07'11\"/>

BAILEY AVENUE  
60' R/W

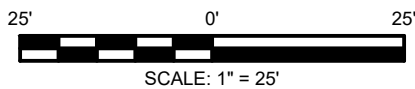
RADIUS=220.00'  
ARC LENGTH=2.18'  
CHORD BEARING=S37°09'04\"/>

TEMPORARY  
CONSTRUCTION  
EASEMENT NO. 2  
11,130 SQ.FT./0.255 ACRE

MATCHLINE SEE SHEET 3 OF 4

LEGEND

- Permanent Utility Easement Area
- Temporary Construction Easement Area



REVISIONS			
NO	DESCRIPTION	BY:	DATE:

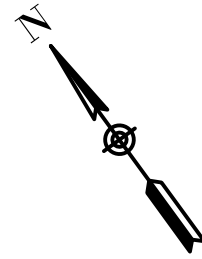
**mbe**  
monaloh basin  
engineers  
Campbells Run Business Center  
300 Business Center Drive  
Suite 304  
Pittsburgh, PA 15205  
Office: 412-788-2433  
Fax: 412-788-2295  
www.mbe-eng.com

PROJECT: PWSA PROJECT NO.: 2023-200-110-0  
2023 WATER RELAY PROJECT  
ZUZU CIRCLE  
PARCEL 3-J-180-0-2 WATER LINE EASEMENT EXHIBIT

CLIENT:

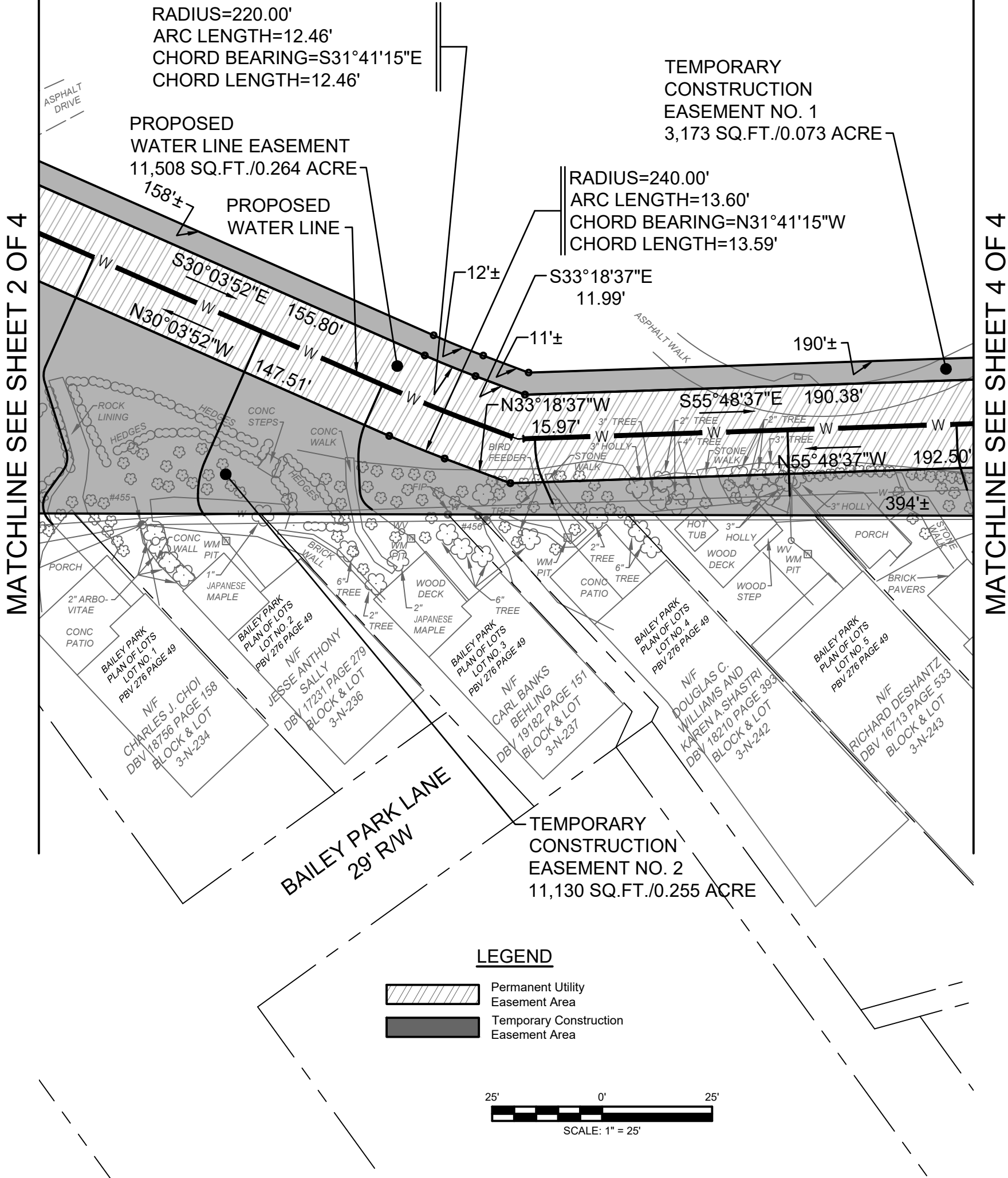
600 Cranberry Woods Drive  
Suite 400  
Cranberry Township, PA 16066  
Office: 724-772-2011  
www.gaiconsultants.com

SCALE:	AS SHOWN
DATE:	04/05/2024
DRAWN BY:	BPP
CHECKED BY:	BMT
PROJECT NUMBER:	3132-21
FILE NAME:	3132-21 - Parcel 3-J-180-0-2.dwg
SHEET NUMBER	2 OF 4



GRANDVIEW PARK

CITY OF PITTSBURGH  
BLOCK & LOT  
3-J-180-0-2



MATCHLINE SEE SHEET 2 OF 4

MATCHLINE SEE SHEET 4 OF 4

REVISIONS			
NO	DESCRIPTION	BY:	DATE:

**mbe**  
monaloh basin  
engineers

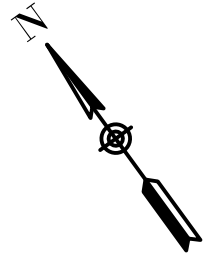
Campbells Run Business Center  
300 Business Center Drive  
Suite 304  
Pittsburgh, PA 15205  
Office: 412-788-2433  
Fax: 412-788-2295  
www.mbe-eng.com

PROJECT: PWSA PROJECT NO.: 2023-200-110-0  
2023 WATER RELAY PROJECT  
ZUZU CIRCLE  
PARCEL 3-J-180-0-2 WATER LINE EASEMENT EXHIBIT

CLIENT: **PGH<sub>2</sub>O**  
Pittsburgh Water & Sewer Authority

**gai consultants**  
600 Cranberry Woods Drive  
Suite 400  
Cranberry Township, PA 16066  
Office: 724-772-2011  
www.gaiconsultants.com

SCALE:	AS SHOWN
DATE:	04/05/2024
DRAWN BY:	BPP
CHECKED BY:	BMT
PROJECT NUMBER:	3132-21
FILE NAME:	3132-21 - Parcel 3-J-180-0-2.dwg
SHEET NUMBER	3 OF 4



GRANDVIEW PARK

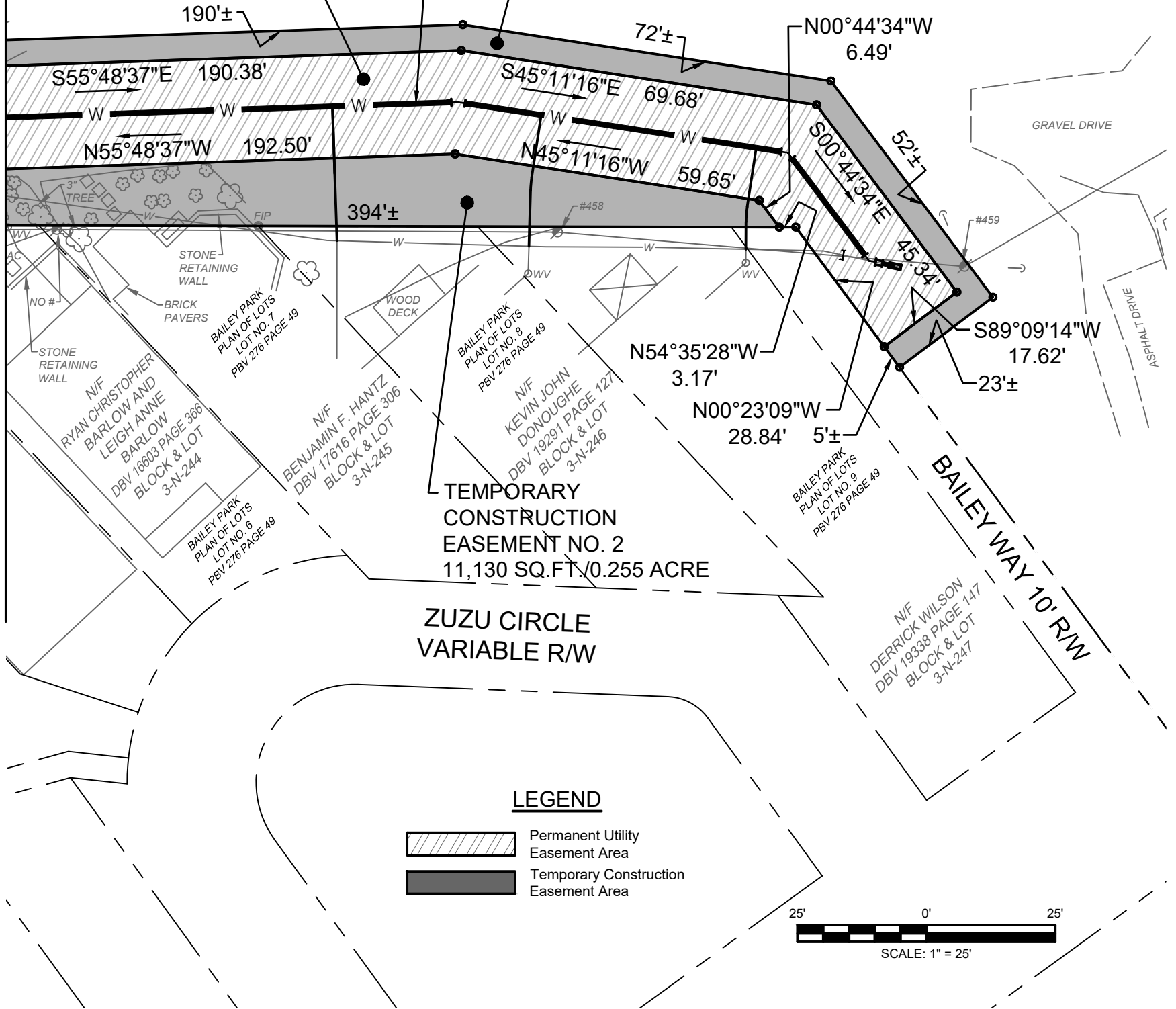
CITY OF PITTSBURGH  
BLOCK & LOT  
3-J-180-0-2

MATCHLINE SEE SHEET 3 OF 4

PROPOSED  
WATER LINE EASEMENT  
11,508 SQ.FT./0.264 ACRE

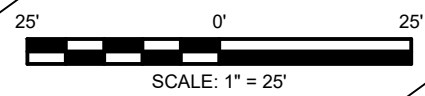
PROPOSED  
WATER LINE

TEMPORARY  
CONSTRUCTION  
EASEMENT NO. 1  
3,173 SQ.FT./0.073 ACRE



**LEGEND**

- Permanent Utility Easement Area
- Temporary Construction Easement Area



REVISIONS			
NO	DESCRIPTION	BY:	DATE:

**mbe**  
monaloh basin  
engineers  
Campbells Run Business Center  
300 Business Center Drive  
Suite 304  
Pittsburgh, PA 15205  
Office: 412-788-2433  
Fax: 412-788-2295  
www.mbe-eng.com

PROJECT: PWSA PROJECT NO.: 2023-200-110-0  
2023 WATER RELAY PROJECT  
ZUZU CIRCLE  
PARCEL 3-J-180-0-2 WATER LINE EASEMENT EXHIBIT

CLIENT: 600 Cranberry Woods Drive  
Suite 400  
Cranberry Township, PA 16066  
Office: 724-772-2011  
www.gaiconsultants.com

SCALE:	AS SHOWN
DATE:	04/05/2024
DRAWN BY:	BPP
CHECKED BY:	BMT
PROJECT NUMBER:	3132-21
FILE NAME:	3132-21 - Parcel 3-J-180-0-2.dwg
SHEET NUMBER	4 OF 4