

RIGHT-OF-WAY AGREEMENT

THIS RIGHT-OF-WAY AGREEMENT is made this _____ day of _____, 2024, by and between **CITY OF PITTSBURGH, a municipal corporation of the Commonwealth of Pennsylvania** (whether singular or plural, the "Grantors") and Duquesne Light Company, a Pennsylvania limited liability company ("Duquesne").

Grantor(s), for good and valuable consideration, the receipt whereof is hereby acknowledged, do hereby give, grant, bargain, sell and convey unto Duquesne, its successors and assigns forever a perpetual easement and right of way twenty five (25') feet in width (the "Easement") upon, over, under, along, across and through that certain tract of land having Parcel No. 26-L-110 and situate in the 5th Wd., City of Pittsburgh, County of Allegheny, Commonwealth of Pennsylvania (the "Property"), which Property Louisa J. Herron by deed dated March 14, 1901, and of record in the Office of the Recorder of Deeds of Allegheny County, Pennsylvania, which property was granted and conveyed to the Grantor herein.

The Easement shall be for vegetation management purposes relating to a transmission or distribution electric system on adjacent property or properties (hereinafter called "The System"); along with overhang rights and together with the following rights, privileges and authority: to trim or remove, and control the growth of, by any means selected by Duquesne, any trees, brush or shrubbery, and to remove obstructions which at any time may interfere or threaten to interfere with the erection, construction, use, operation, maintenance, repair, renewal and final removal of The System; to enter upon the Property at any time for such purposes; and to sublet or assign Duquesne's interest, in whole or in part, without the prior consent of Grantors. The Easement shall be located as shown on Duquesne Light Company drawing 930804-T1, a copy of which has been attached to and made part hereof.

The Property may always be used by Grantors for such uses and purposes as are not inconsistent with and will not interfere with the erection, construction, use, operation, ownership, maintenance, repair, renewal and final removal of The System; provided, however, that no buildings or structures other than fences shall be located or constructed by Grantors within the limits of the Easement; and provided further that Grantors in the use of the Property shall not interfere in any manner with the erection, construction, use, operation, ownership, maintenance, repair, renewal and final removal of The System.

No. 930804-T1

CITY OF PITTSBURGH

26-L-110

LEGEND

- EMPTY CONDUIT
- INSTALL 3/4" C 500 CU LPP & 4/0 CU ± TO CRT D23751P

MAP: F7-4
DUCT: E-128
CKT: D23741-5



FINAL DESIGN BY: MICHAEL MINS
5789859 - ITEM 7
5789864 - ITEM 8
5789874 - ITEM 9

EXPANSION AND CONTRACTION

M.H. #	FORM	DEPTH	WIDTH	DEPTH
5822	30x30	8.0'	10.0'	8.0'
5823	30x30	8.0'	10.0'	8.0'

EXPANSION AND CONTRACTION

M.H. #	FORM	DEPTH	WIDTH	DEPTH
5822	30x30	8.0'	10.0'	8.0'
5823	30x30	8.0'	10.0'	8.0'

M.H. 5822
6" x 6" x 8" BRICK MANHOLE WITH 3" x 3" x 3" PRECAST MH
CONCRETE SURROUND TO CURB
W/FLANCKER
CABLE BACKS
GROUNDING RING
1/8" TC 500 CU STRAIGHT SPACES
SEE DRAWING T-101 FOR ADDITIONAL DETAILS

M.H. 5823
6" x 6" x 8" BRICK MANHOLE WITH 3" x 3" x 3" PRECAST MH
CONCRETE SURROUND TO CURB
W/FLANCKER
CABLE BACKS
GROUNDING RING
1/8" TC 500 CU STRAIGHT SPACES
SEE DRAWING T-101 FOR ADDITIONAL DETAILS

M.H. 5822
6" x 6" x 8" BRICK MANHOLE WITH 3" x 3" x 3" PRECAST MH
CONCRETE SURROUND TO CURB
W/FLANCKER
CABLE BACKS
GROUNDING RING
1/8" TC 500 CU STRAIGHT SPACES
SEE DRAWING T-101 FOR ADDITIONAL DETAILS

M.H. 5823
6" x 6" x 8" BRICK MANHOLE WITH 3" x 3" x 3" PRECAST MH
CONCRETE SURROUND TO CURB
W/FLANCKER
CABLE BACKS
GROUNDING RING
1/8" TC 500 CU STRAIGHT SPACES
SEE DRAWING T-101 FOR ADDITIONAL DETAILS

INSTALL UNDER WO 868381

INSTALL UNDER WO 868381

INSTALL UNDER WO 868381

INSTALL UNDER WO 868381

Proposed Vegetation Clearing
Approx. alignment between poles
Dig Items 1 & 2

Proposed Vegetation Clearing
Approx. alignment between poles
Dig Items 2 thru 5, 6 & 7

Proposed Vegetation Clearing
Approx. alignment between poles
Dig Items 1 & 2

Proposed Vegetation Clearing
Approx. alignment between poles
Dig Items 2 thru 5, 6 & 7

Proposed Vegetation Clearing
Approx. alignment between poles
Dig Items 1 & 2

Proposed Vegetation Clearing
Approx. alignment between poles
Dig Items 2 thru 5, 6 & 7

Proposed Vegetation Clearing
Approx. alignment between poles
Dig Items 1 & 2

Proposed Vegetation Clearing
Approx. alignment between poles
Dig Items 2 thru 5, 6 & 7

Proposed Vegetation Clearing
Approx. alignment between poles
Dig Items 1 & 2

Proposed Vegetation Clearing
Approx. alignment between poles
Dig Items 2 thru 5, 6 & 7

Proposed Vegetation Clearing
Approx. alignment between poles
Dig Items 1 & 2

Proposed Vegetation Clearing
Approx. alignment between poles
Dig Items 2 thru 5, 6 & 7

Proposed Vegetation Clearing
Approx. alignment between poles
Dig Items 1 & 2

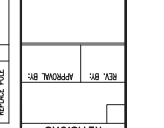
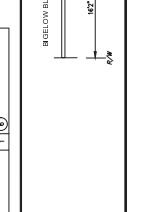
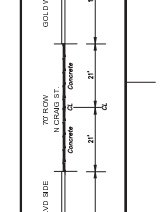
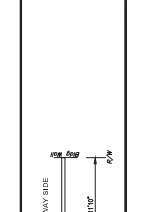
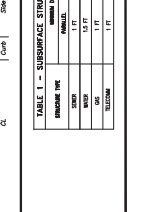
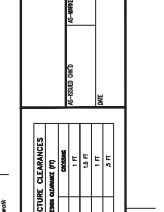
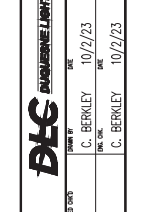
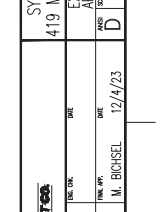
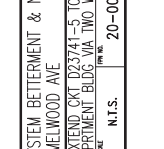
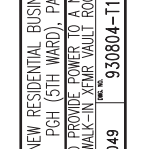
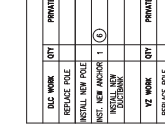
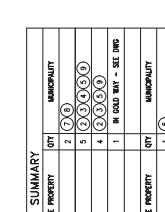
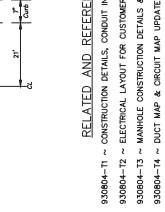
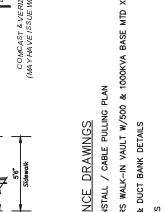
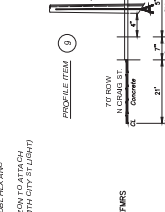
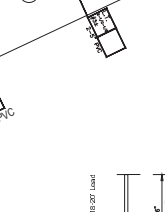
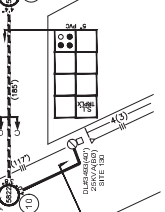
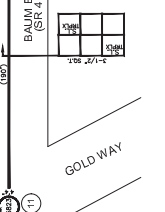
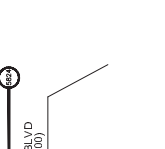
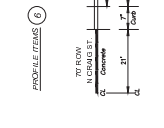
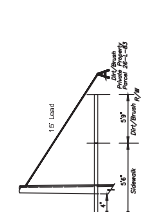
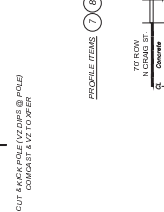
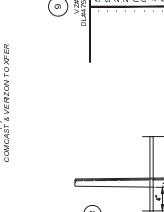
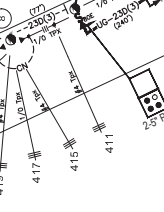
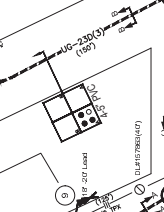
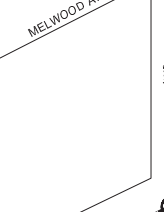
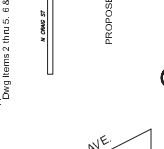
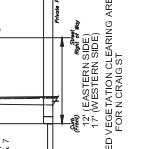
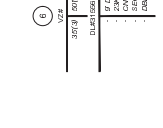
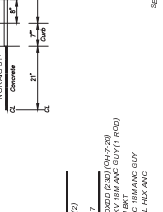
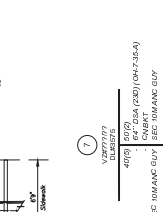
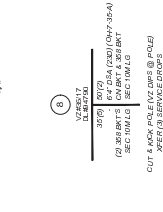
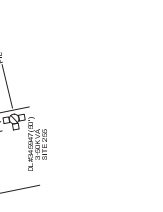
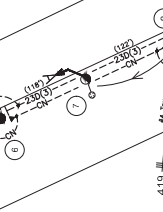
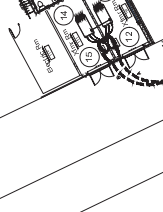
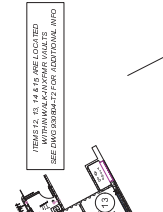
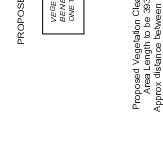
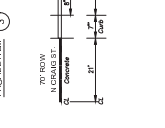
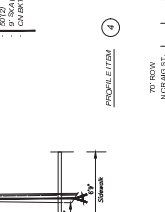
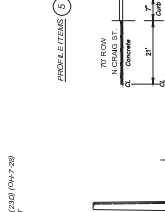
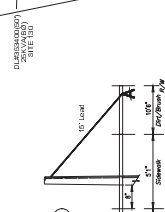
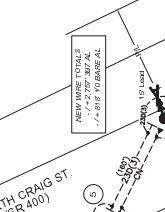
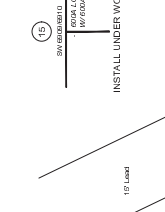
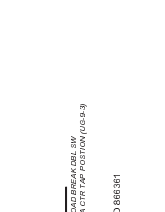
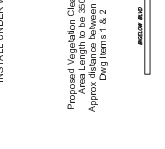
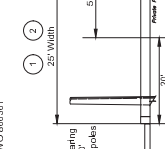
Proposed Vegetation Clearing
Approx. alignment between poles
Dig Items 2 thru 5, 6 & 7

Proposed Vegetation Clearing
Approx. alignment between poles
Dig Items 1 & 2

Proposed Vegetation Clearing
Approx. alignment between poles
Dig Items 2 thru 5, 6 & 7

Proposed Vegetation Clearing
Approx. alignment between poles
Dig Items 1 & 2

Proposed Vegetation Clearing
Approx. alignment between poles
Dig Items 2 thru 5, 6 & 7



SYSTEM BETTERMENT & NEW RESIDENTIAL BUSINESS
419 MELWOOD AVE
PCH (5TH WARD), PA 15213

EXTEND CKT D23741-5 TO PROVIDE POWER TO A NEW APARTMENT BLDG. VIA TWO WALK-IN VOLT ROOMS

NO.	DATE	BY	CHK.
1	10/2/23	C. BERKLEY	OK
2	10/2/23	C. BERKLEY	OK
3	12/4/23	M. BICHEL	OK

TABLE 1 - SURFACE FINISHES

FINISH	THICKNESS
CONCRETE	4"
ASPHALT	2"
GRAVEL	4"
GRAVEL	4"
GRAVEL	4"

TABLE 2 - CONSTRUCTION DETAILS

DETAIL	THICKNESS
CONCRETE	4"
ASPHALT	2"
GRAVEL	4"
GRAVEL	4"
GRAVEL	4"

TABLE 3 - CONSTRUCTION DETAILS

DETAIL	THICKNESS
CONCRETE	4"
ASPHALT	2"
GRAVEL	4"
GRAVEL	4"
GRAVEL	4"

REVISIONS

NO.	DATE	BY	CHK.
1	10/2/23	C. BERKLEY	OK
2	10/2/23	C. BERKLEY	OK
3	12/4/23	M. BICHEL	OK

930804-T1