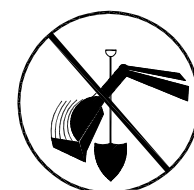
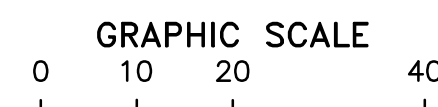




Know what's **below**.
Call before you dig.



CALL BEFORE YOU DIG!
PENNSYLVANIA LAW REQUIRES
3 WORKING DAYS NOTICE FOR
CONSTRUCTION PHASE AND 10 WORKING
DAYS NOTICE IN DESIGN STAGE.
STOP CALL
PENNSYLVANIA ONE CALL SYSTEM, INC.
1-800-242-1776



(IN FEET)
1 inch = 20 ft.



IF THIS DRAWING IS LESS THAN 24" X 36" IT IS A REDUCED SIZE DRAWING

SITE UTILITY NOTES

- 1 EXISTING 66" PWSA OVERFLOW SEWER LINE.
- 2 PROPOSED CONNECTION TO EXISTING PWSA 66" OVERFLOW SEWER, AT STA 5+47.57. SEE DETAIL SSC-1, PLAN SHEET TP150.
- 3 PROPOSED CITY OF PITTSBURGH OWNED 15" STORMWATER LINE.
- 4 PROPOSED CITY OF PITTSBURGH OWNED STORMWATER STRUCTURE.
- 5 LIMIT OF CITY OF PITTSBURGH OWNED STORMWATER BMP.

NOTES:

- REPORT STATIONING WAS DETERMINED FROM CCTV. CCTV VIDEO PERFORMED BY ROBINSON PIPE CLEANING COMPANY ON 1/24/2025.
- ALL PROPOSED STORM SERVICE LINES/LATERALS SHALL BE OWNED AND MAINTAINED BY THE CITY OF PITTSBURGH, FROM THE POINT OF EXITING THE PROPOSED STORMWATER BMP TO THE TAP IN LOCATION ON THE MAIN.
- CONTRACTOR TO VERIFY ELEVATIONS AND GRADES PRIOR TO INSTALLING LATERALS AND SHALL CONTACT THE ENGINEER FOR DISCREPANCIES IN INFORMATION SHOWN ON PROJECT PLANS.

LEGEND

	PROPERTY LINE
	ADJOINER LINE
	CITY WARD LINE
	EXISTING BUILDING
	EXISTING PAINTED WHITE LINE
	EXISTING SEWER
	EXISTING FENCE
	EXISTING OVERHEAD WIRES
	EXISTING WATER LINE
	EXISTING GAS LINE
	EXISTING 2' CONTOUR LINE
	EXISTING 10' CONTOUR LINE
	PROPOSED 2' CONTOUR LINE
	PROPOSED 10' CONTOUR LINE
	PROPOSED TRAIL CENTERLINE
	PROPOSED TRAIL & AGGREGATE SHOULDER
	PROPOSED STORM PIPE
	PROPOSED STORM MANHOLE
	LIMITS OF STORMWATER BMP
	PROPOSED LANDSCAPING

THE PITTSBURGH WATER & SEWER AUTHORITY APPROVAL BLOCK

To be completed by the Applicant and provided on each sheet within the plan set:

(Check all that apply)

- ☒ NEW WATER CONNECTION(S)
☐ NEW SEWER CONNECTION(S)
☐ REUSE EXISTING WATER CONNECTION(S)
☐ REUSE EXISTING SEWER CONNECTION(S)
☐ TERMINATE EXISTING WATER CONNECTION(S)
☐ TERMINATE EXISTING SEWER CONNECTION(S)
☐ PRIVATE CONSTRUCTION OF PUBLIC FACILITIES

To be completed by the PWSA:

(Required for ALL approvals)

REVIEWER, DEPT. OF ENGINEERING AND CONSTRUCTION

SENIOR PROJECT MANAGER, DEPT. OF ENGINEERING AND CONSTRUCTION

DIRECTOR OF OPERATIONS

(Required for "Private Construction of Public Facilities" ONLY)

DIRECTOR, DEPT. OF ENGINEERING AND CONSTRUCTION

PWSA PROJECT NUMBER TAP-xx-xxx

TAP C RECORD NUMBER

The PWSA approval was based on information provided by others under the assumption that this information was accurate and complete. Please refer to the PWSA Developer's Manual for detailed information on the regulations and procedures for obtaining water and sewer service.



SUITE 101
MONROEVILLE, PA 15146
OFFICE: 724.325.1215

A&E SEAL:

ACKNOWLEDGEMENT OR "SIGN-OFF" BY PARTIES TO THE CONSTRUCTION DRAWINGS DOES NOT CONSTITUTE ALTERATION OF LEASE TERMS.

THE INFORMATION CONTAINED IN THIS SET OF DOCUMENTS IS PROPRIETARY BY NATURE. ANY USE OR DISCLOSURE OTHER THAN THAT WHICH RELATES TO CURRENT NAME IS STRICTLY PROHIBITED. IT IS A VIOLATION OF LAW FOR ANY PERSON, UNLESS THEY ARE WORKING UNDER THE DIRECTION OF A LICENSED PROFESSIONAL ENGINEER, TO ALTER THIS DOCUMENT.

WEST END TROLLEY TRAIL
CITY OF PITTSBURGH

MCCARTNEY STREET
PITTSBURGH, PA 15220
ALLEGHENY COUNTY

[illegible]

PROJ NO: 21-1053

SCALE: AS SHOWN

DATE: 11/1/2024

DESIGNED BY: TCA
DRAWN BY: CKM

CHECKED BY: JOV

SHEET TITLE:

SHEET TITLE:
TAB 1

TAP-1
PLAN

PLAN

ENLARGE

SHEET 2

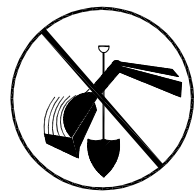
SHEET NO

TR10

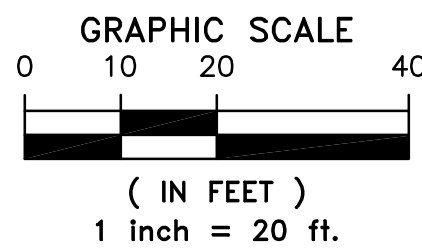
G:\Users\CKM\AppData\Local\Temp\ApPublic_11192024-1693 - West End Trolley Trail - CD_recover.dwg Plotter: Feb 26, 2025 - 5:05pm



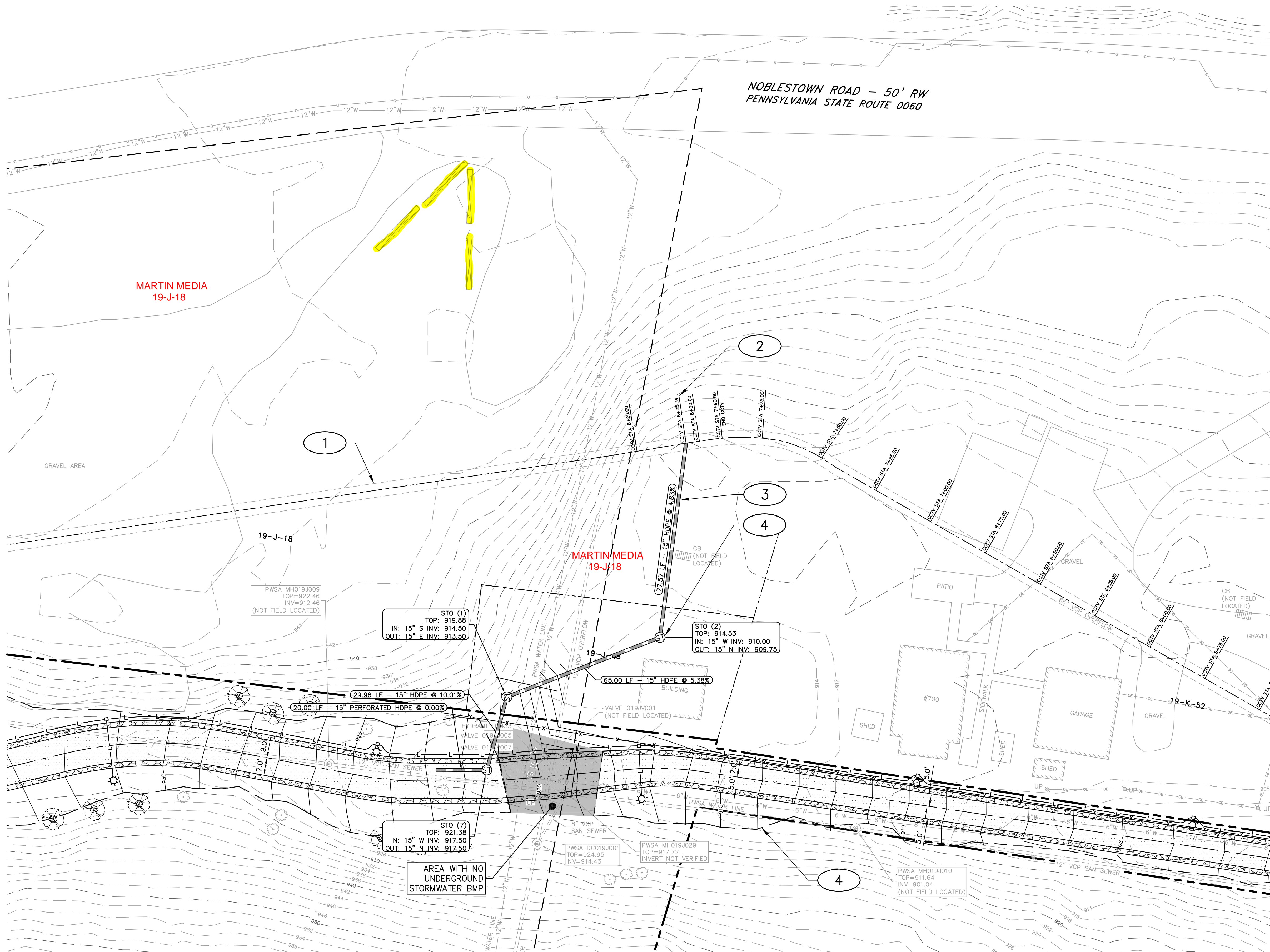
Know what's below.
Call before you dig.



CALL BEFORE YOU DIG!
PENNSYLVANIA LAW REQUIRES
3 WORKING DAYS NOTICE FOR
CONSTRUCTION PHASE AND 10 WORKING
DAYS NOTICE IN DESIGN STAGE.
STOP CALL
PENNSYLVANIA ONE CALL SYSTEM, INC.
1-800-242-1776



IF THIS DRAWING IS LESS THAN 24" X 36" IT IS A REDUCED SIZE DRAWING



SITE UTILITY NOTES

- 1 EXISTING 66" PWSA OVERFLOW SEWER LINE.
- 2 PROPOSED CONNECTION TO EXISTING PWSA 66" OVERFLOW SEWER, AT STA 8+05.34. SEE DETAIL SSC-1, PLAN SHEET TP150.
- 3 PROPOSED CITY OF PITTSBURGH OWNED 15" STORMWATER LINE.
- 4 PROPOSED CITY OF PITTSBURGH OWNED STORMWATER STRUCTURE.
- 5 LIMIT OF CITY OF PITTSBURGH OWNED STORMWATER BMP.

NOTES:

- REPORT STATIONING WAS DETERMINED FROM CCTV. CCTV VIDEO PERFORMED BY ROBINSON PIPE CLEANING COMPANY ON 1/24/2025.
- ALL PROPOSED STORM SERVICE LINES/LATERALS SHALL BE OWNED AND MAINTAINED BY THE CITY OF PITTSBURGH, FROM THE POINT OF EXITING THE PROPOSED STORMWATER BMP TO THE TAP IN LOCATION ON THE MAIN.
- CONTRACTOR TO VERIFY ELEVATIONS AND GRADES PRIOR TO INSTALLING LATERALS AND SHALL CONTACT THE ENGINEER FOR DISCREPANCIES IN INFORMATION SHOWN ON PROJECT PLANS.

LEGEND

	PROPERTY LINE
	ADJOINER LINE
	CITY WARD LINE
	EXISTING BUILDING
	EXISTING PAINTED WHITE LINE
	EXISTING SEWER
	EXISTING FENCE
	EXISTING OVERHEAD WIRES
	EXISTING WATER LINE
	EXISTING GAS LINE
	EXISTING 2' CONTOUR LINE
	EXISTING 10' CONTOUR LINE
	PROPOSED 2' CONTOUR LINE
	PROPOSED 10' CONTOUR LINE
	PROPOSED TRAIL CENTERLINE
	PROPOSED TRAIL & AGGREGATE SHOULDER
	PROPOSED STORM PIPE
	PROPOSED STORM MANHOLE
	LIMITS OF STORMWATER BMP
	PROPOSED LANDSCAPING

THE PITTSBURGH WATER & SEWER AUTHORITY APPROVAL BLOCK

To be completed by the Applicant and provided on each sheet within the plan set:

(Check all that apply)

- ☐ NEW WATER CONNECTION(S)
- ☒ NEW SEWER CONNECTION(S)
- ☐ REUSE EXISTING WATER CONNECTION(S)
- ☐ REUSE EXISTING SEWER CONNECTION(S)
- ☐ TERMINATE EXISTING WATER CONNECTION(S)
- ☐ TERMINATE EXISTING SEWER CONNECTION(S)
- ☐ PRIVATE CONSTRUCTION OF PUBLIC FACILITIES

To be completed by the PWSA:

(Required for ALL approvals)

REVIEWER, DEPT. OF ENGINEERING AND CONSTRUCTION

SENIOR PROJECT MANAGER, DEPT. OF ENGINEERING AND CONSTRUCTION

DIRECTOR OF OPERATIONS

(Required for "Private Construction of Public Facilities" ONLY)

DIRECTOR, DEPT. OF ENGINEERING AND CONSTRUCTION

PWSA PROJECT NUMBER TAP-xx-xxx

TAP C RECORD NUMBER

The PWSA approval was based on information provided by others under the assumption that this information was accurate and complete. Please refer to the PWSA Developer's Manual for detailed information on the regulations and procedures for obtaining water and sewer service.

WEST END TROLLEY TRAIL
CITY OF PITTSBURGH

MCCARTNEY STREET
PITTSBURGH, PA 15220
ALLEGHENY COUNTY

REVISIONS:

MARK	DATE	DESCRIPTION
A	xx/xx/202x	DRAFT FOR PWSA REVIEW

PROJ NO: 21-1053
SCALE: AS SHOWN
DATE: 11/1/2024
DESIGNED BY: ICA
DRAWN BY: CKM
CHECKED BY: JOW

SHEET TITLE:

TAP-IN
PLAN
ENLARGEMENT
SHEET 3 OF 4

SHEET NO.

TP103

A&E SEAL:

ACKNOWLEDGEMENT OR "SIGN-OFF" BY
A PROFESSIONAL ENGINEER OR ARCHITECT
FOR THE CONSTRUCTION OF THE
DRAWING IS REQUIRED. THE
ALTERATION OF THESE TERMS
OR THE INFORMATION CONTAINED IN THIS
SET OF DOCUMENTS IS PROPRIETARY
BY NATURE. ANY USE OR DISCLOSURE
OTHER THAN THAT WHICH RELATES TO
THE PROJECT FOR WHICH IT WAS
PREPARED, WITHOUT THE WRITTEN
CONSENT OF THE ENGINEER OR ARCHITECT,
IS A VIOLATION OF LAW FOR ANY
PERSON. UNLESS THEY ARE WORKING
UNDER THE DIRECTION OF A LICENSED
PROFESSIONAL ENGINEER TO ALTER
THIS DOCUMENT.

RED
SWING
GROUP

4314 OLD WILLIAM PENN HWY.
SUITE 101
MONROEVILLE, PA 15146
OFFICE: 724-325-1215

DRAFT