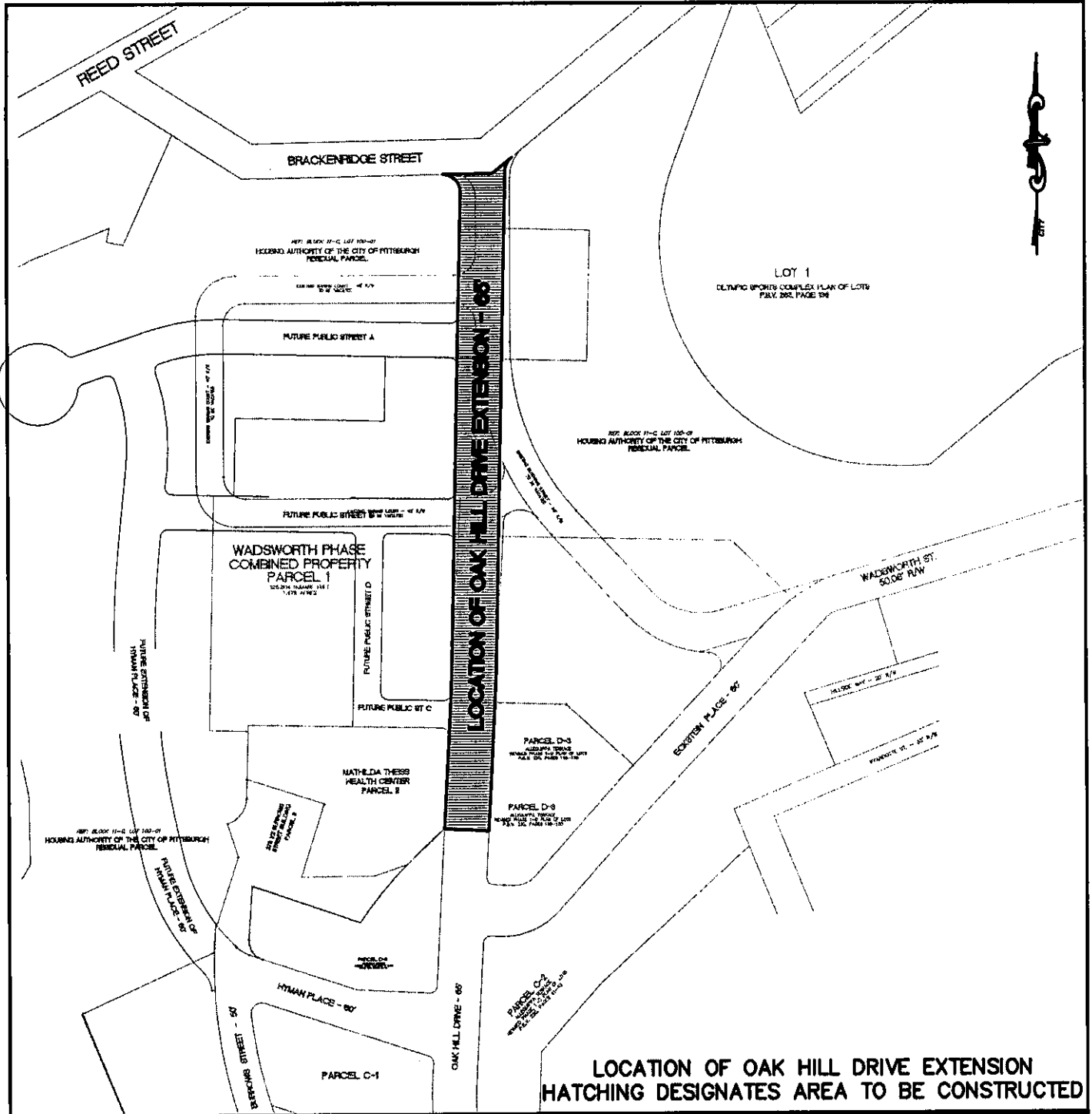


EASEMENT AND DEDICATION OF A PORTION OF BURROWS STREET AND WADSWORTH STREET IN ACCORDANCE WITH THEIR LOCATIONS AS SHOWN ON THE "PLAT PLAN FOR TERRACE VILLAGE UNIT 2" AS RECORDED IN P.B.V. 38, PAGES 6-14 INCL. AND A PORTION OF ECKSTEIN PLACE (FORMERLY DRIVE A) AS SHOWN ON THE ALLEQUIPPA TERRACE REVISED PHASE 1-C PLAN AS RECORDED IN P.B.V. 225, PAGES 41-42

PLAN MADE FOR	HOUSING AUTHORITY OF THE CITY OF PITTSBURGH
SITUATE IN	5TH WARD, CITY OF PITTSBURGH ALLEGHENY COUNTY, PA
LIADIS ENGINEERING & SURVEYING, INC. 3100 BANKSVILLE ROAD - PITTSBURGH, PA 15216	
SCALE: 1" = 100'	OCTOBER 28, 2009
DRAWING No. 22716-A-V5	

Exhibit A



LOCATION OF OAK HILL DRIVE EXTENSION
 HATCHING DESIGNATES AREA TO BE CONSTRUCTED

PLAN MADE FOR	HOUSING AUTHORITY OF THE CITY OF PITTSBURGH	
SITUATE IN	5TH WARD, CITY OF PITTSBURGH ALLEGHENY COUNTY, PA	
LIADIS ENGINEERING & SURVEYING, INC. 3100 BANKSVILLE ROAD – PITTSBURGH, PA 15216		
SCALE: 1" = 200'	OCTOBER 28, 2009	DRAWING No. 22716-A-V6