

5/29/2025 3:52:21 PM \\PBGF5\Projects\10050_PA_ALCOSAN_0h for iv\300_CADD\Plan_Set\Traffic\TCP\027_SITE_PLAN.dgn



SYMBOL	SIGN	NOMENCLATURE /SIZE/MOUNTING
(A)		R11-2 48"x30" TYPE III BARRICADE
(B)		W20-3 36"x36" W30-1-6 20"x6" POST MOUNTED
(C)		R9-9 24"x12" TYPE II BARRICADE
(D)		M4-9A 30"x24" POST MOUNTED
(F)		M4-8A 24"x18" POST MOUNTED
(G)		R9-9 (MODIFIED) 24"x12" TYPE II BARRICADE
(H)		SP-1 36"x24" POST MOUNTED

TRAFFIC CONTROL NOTES

1. MAINTAIN TRAFFIC AS SHOWN IN PLAN.
2. UPON COMPLETION OF WORK, THE CONTRACTOR IS TO RECONSTRUCT ALL OF WESTHALL STREET WITHIN THE RIGHT-OF-WAY. RECONSTRUCT THE ROADWAY PART-WIDTH IN SHORT SEGMENTS. MAINTAIN LOCAL TRAFFIC ACCESS PER PENNDOT PUBLICATION 213, PATA 107.

LEGEND

- (A) TRAFFIC CONTROL SIGN AND SYMBOL
- WORK AREA
- WORK ZONE (AREA CLOSED)
- TRAIL CLOSED AREA
- DIRECTION OF TRAFFIC FLOW



SCALE IN FEET
SCALE 1" = 50'

SEE SHEET 759

Designed by:	REVISION			
	REV No.	DATE	DESCRIPTION	APPV
T. LONG				
Drawn by:				
T. LONG				
Checked by:				
J. SCHULZE				

M MOTT MACDONALD

Two Allegheny Center
Nova Tower 2, Suite 1301
Pittsburgh, PA 15212
(412) 497 - 2900

McCORMICK TAYLOR

1000 Omega Drive
Suite 1550
Pittsburgh, Pennsylvania 15205
(412) 922-6880

JOHN CLAYTON SCHULZE
REGISTERED PROFESSIONAL ENGINEER
No. 70813
PENNSYLVANIA

alcosan
allegheny county sanitary authority

ARLETTA SCOTT WILLIAMS
EXECUTIVE DIRECTOR, ALCOSAN

3300 PREBLE AVE.
PITTSBURGH, PA 15233
(412) 766 - 4810

www.alcosan.org

ALLEGHENY COUNTY SANITARY AUTHORITY (ALCOSAN)
OHIO RIVER TUNNEL (ORT)

ORT-TC-100
O27 TRAFFIC CONTROL PLAN
SHEET 1 OF 2

Contract:	1797
File:	ORT-TC-100.dwg
Date:	07/01/2025
Sheet:	758 OF 770

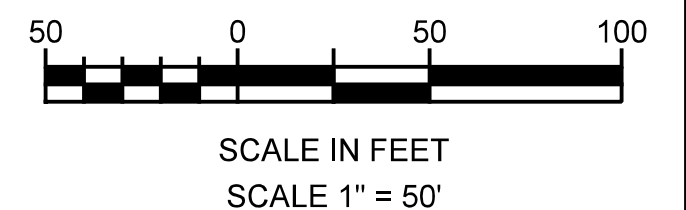
SEE SHEET 758



SYMBOL	SIGN	NOMENCLATURE /SIZE/MOUNTING
(D)		M4-9A 30"x24" POST MOUNTED
(E)		M4-9A 30"x24" POST MOUNTED
(F)		M4-8A 24"x18" POST MOUNTED
(G)		R9-9 (MODIFIED) 24"x12" TYPE II BARRICADE
(H)		SP-1 36"x24" POST MOUNTED

LEGEND

	TRAFFIC CONTROL SIGN AND SYMBOL
	WORK AREA
	TRAIL CLOSED AREA
	DIRECTION OF TRAFFIC FLOW



5/29/2025 3:52:32 PM \\PBGFS\Projects\10050_PA_ALCOSAN_0hioriva\300_CADD\Plan_Set\Traffic\TCP\027_SITE_PLAN_1.dgn

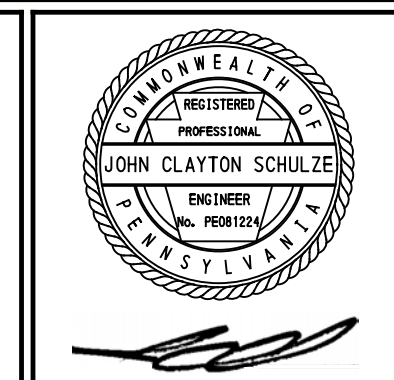
Designed by: T. LONG	REV No.	DATE	REVISION DESCRIPTION	APPV
Drawn by: T. LONG				
Checked by: J. SCHULZE				

MOTT MACDONALD

Two Allegheny Center
Nova Tower 2, Suite 1301
Pittsburgh, PA 15212
(412) 497 - 2900

McCORMICK TAYLOR

1000 Omega Drive
Suite 1550
Pittsburgh, Pennsylvania 15205
(412) 922-6880



alcosan
allegheny county sanitary authority

ARLETTA SCOTT WILLIAMS
EXECUTIVE DIRECTOR, ALCOSAN

3300 PREBLE AVE.
PITTSBURGH, PA 15233
(412) 766 - 4810

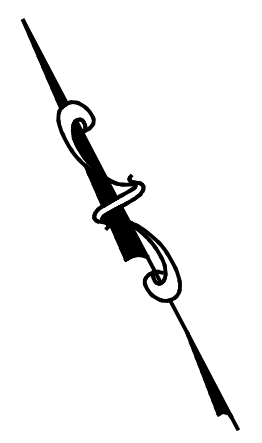
www.alcosan.org

ALLEGHENY COUNTY SANITARY AUTHORITY (ALCOSAN)
OHIO RIVER TUNNEL (ORT)

**ORT-TC-101
O27 TRAFFIC CONTROL PLAN
SHEET 2 OF 2**

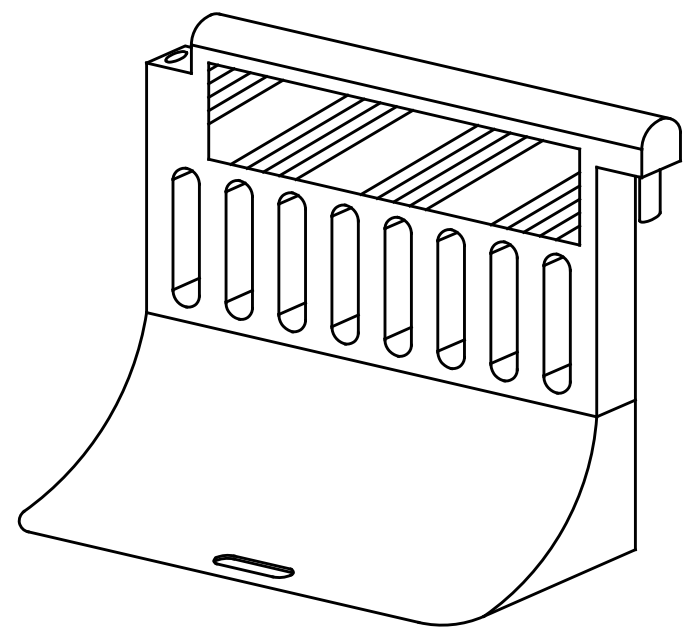
Contract:	1797
File:	ORT-TC-101.dwg
Date:	07/01/2025
Sheet:	759 OF 770

5/29/2025 3:53:26 PM \\PBGF\S\Projects\10050_PA_ALCOSAN_01\Traffic\Plan_Sett\Traffic\TCP\041_SITE_PLAN.dgn



CONTRACTOR TO PROVIDE TEMPORARY OPENING IN EXISTING FENCE TO ACCOMMODATE PEDESTRIANS DURING TRAIL DETOUR. CONTRACTOR TO REINSTALL AND REPAIR FENCE TO EXISTING CONDITION OR BETTER AFTER TEMPORARY TRAIL DETOUR REMOVED.

PROVIDE A TEMPORARY TEN (10) FT MIN PEDESTRIAN WALKWAY



TEMPORARY PEDESTRIAN BARRICADE DETAIL
NOT TO SCALE

1. PEDESTRIAN BARRICADES TO MEET ALL MUTCD AND ADA REQUIREMENTS.

SYMBOL	SIGN	NOMENCLATURE /SIZE/MOUNTING
(A)	TRAIL CLOSED	R9-9 (MODIFIED) 24"x12" TYPE II BARRICADE
(B)	DETOUR (Left Arrow)	M4-9A 30"x24" POST MOUNTED
(C)	DETOUR (Right Arrow)	M4-9A 30"x24" POST MOUNTED
(D)	END DETOUR	M4-8A 24"x18" POST MOUNTED
(E)	ROAD CLOSED	R11-2 48"x30" TYPE III BARRICADE

TRAFFIC CONTROL NOTES

1. MAINTAIN TRAIL DETOUR DURING CONSTRUCTION OF SEWER ACROSS TRAIL AND OUTFALL CONSTRUCTION ONLY. MINIMIZE THE DURATION OF THE DETOUR AS MUCH AS POSSIBLE. DURING PERIODS OF INTERACTIVITY, PROVIDE FENCING AND STEEL PLATING OR TEMPORARY PAVEMENT AS NEEDED.
2. TRAIL TO BE OPEN BEFORE AND AFTER CONSTRUCTION OF SEWER AND OUTFALL.

LEGEND

- (A) TRAFFIC CONTROL SIGN AND SYMBOL
- WORK AREA
- - - PEDESTRIAN DETOUR ROUTE
- X PEDESTRIAN BARRICADE
- ▨ WORK ZONE (AREA CLOSED)
- ← DIRECTION OF TRAFFIC FLOW



SCALE IN FEET
SCALE 1" = 50'

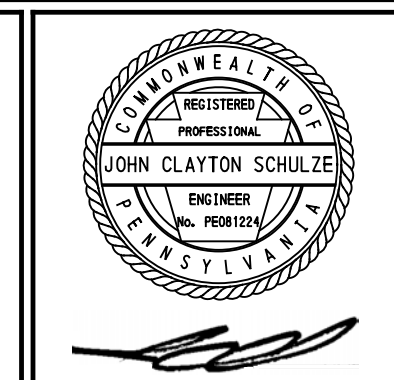
Designed by:	REVISION		
T. LONG	REV No.	DATE	DESCRIPTION
Drawn by:			APPV
T. LONG			
Checked by:			
J. SCHULZE			

MOTT MACDONALD

Two Allegheny Center
Nova Tower 2, Suite 1301
Pittsburgh, PA 15212
(412) 497 - 2900

McCORMICK TAYLOR

1000 Omega Drive
Suite 1550
Pittsburgh, Pennsylvania 15205
(412) 922-6880



alcosan
allegheeny county sanitary authority

ARLETTA SCOTT WILLIAMS
EXECUTIVE DIRECTOR, ALCOSAN

3300 PREBLE AVE.
PITTSBURGH, PA 15233
(412) 766 - 4810

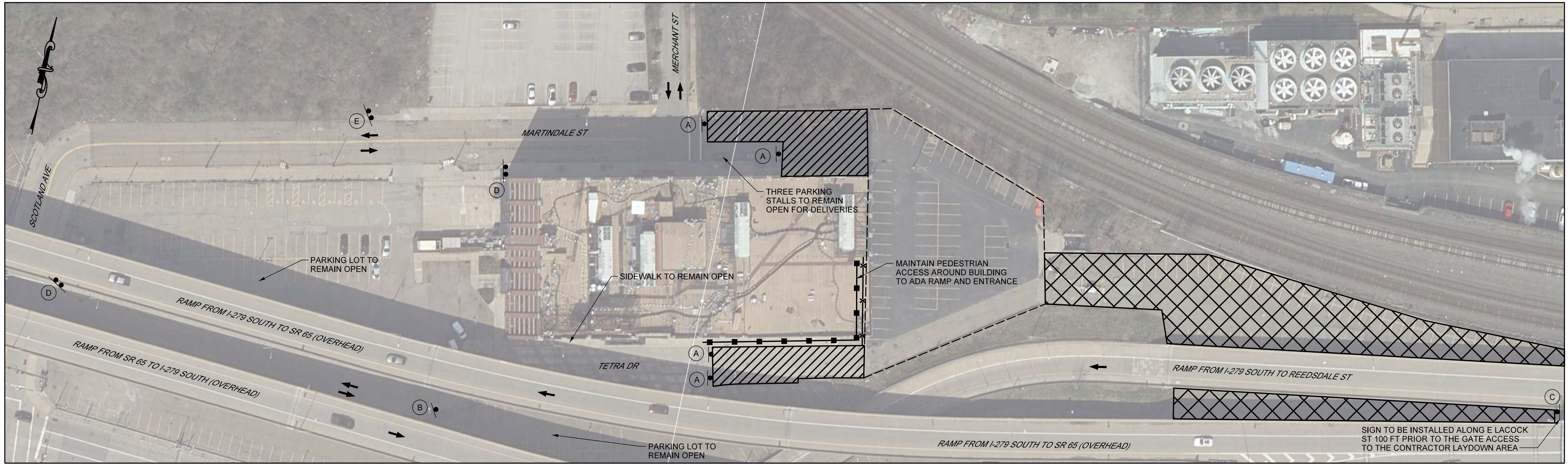
www.alcosan.org

ALLEGHENY COUNTY SANITARY AUTHORITY (ALCOSAN)
OHIO RIVER TUNNEL (ORT)

ORT-TC-200
O41 TRAFFIC CONTROL PLAN

Contract:	1797
File:	ORT-TC-200.dwg
Date:	07/01/2025
Sheet:	760 OF 770

5/29/2025 3:53:40 PM \\PBGF\S\Projects\10050_PA_ALCOSAN_0hioriv\300_CADD\Plan_Set\Traffic\TCP\A48_SITE_PLAN.dgn



SYMBOL	SIGN	NOMENCLATURE /SIZE/MOUNTING
(A)		R11-2 48"x30" TYPE III BARRICADE
(B)		W20-3 36"x36" W30-1-6 20"x6" POST MOUNTED
(C)		W25-5 36"x36" W30-1-6 20"x6" POST MOUNTED

SYMBOL	PCMS MESSAGE 1	PCMS MESSAGE 2
(D)		
(E)		

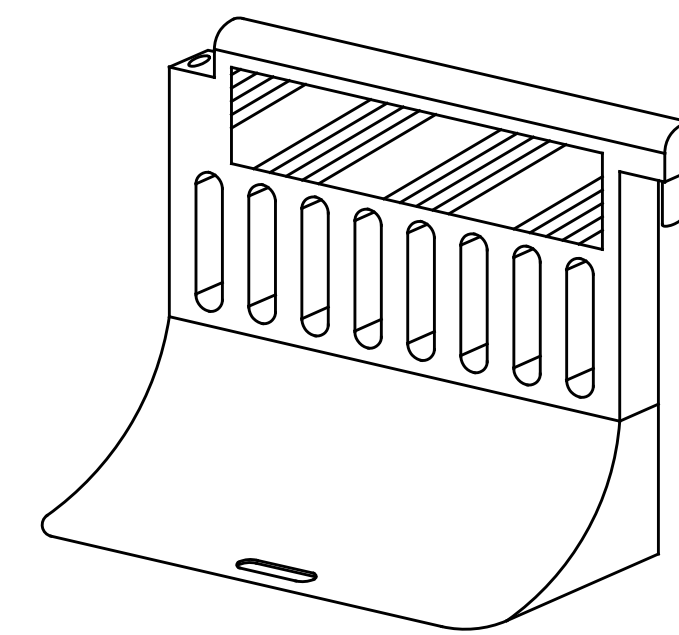
PCMS NOTES
 1. UPON CLOSING THE PARKING LOT, CHANGE SIGN E MESSAGE 2 TO READ THE FOLLOWING:
 LOT CLOSED

TRAFFIC CONTROL NOTES

1. MAINTAIN TRAFFIC AS SHOWN IN PLAN.

LEGEND

- (A) TRAFFIC CONTROL SIGN AND SYMBOL
- (A) CHANGEABLE MESSAGE SIGN AND SYMBOL
- PEDESTRIAN ACCESS ROUTE
- PEDESTRIAN BARRICADE
- WORK AREA
- WORK ZONE (AREA CLOSED)
- CONTRACTOR LAYDOWN AREA
- DIRECTION OF TRAFFIC FLOW



TEMPORARY PEDESTRIAN BARRICADE DETAIL
 NOT TO SCALE

1. PEDESTRIAN BARRICADES TO MEET ALL MUTCD AND ADA REQUIREMENTS.



SCALE IN FEET
 SCALE 1" = 40'

Designed by:	REVISION		
	REV No.	DATE	DESCRIPTION
T. LONG			
Drawn by:			
T. LONG			
Checked by:			
J. SCHULZE			

MOTT MACDONALD
 Two Allegheny Center
 Nova Tower 2, Suite 1301
 Pittsburgh, PA 15212
 (412) 497 - 2900

MCCORMICK TAYLOR
 1000 Omega Drive
 Suite 1550
 Pittsburgh, Pennsylvania 15205
 (412) 922-6880

REGISTERED PROFESSIONAL ENGINEER
 JOHN CLAYTON SCHULZE
 No. 000151
 PENNSYLVANIA

alcosan
 allegheny county sanitary authority

ARLETTA SCOTT WILLIAMS
 EXECUTIVE DIRECTOR, ALCOSAN

3300 PREBLE AVE.
 PITTSBURGH, PA 15233
 (412) 766 - 4810

www.alcosan.org

ALLEGHENY COUNTY SANITARY AUTHORITY (ALCOSAN)
 OHIO RIVER TUNNEL (ORT)

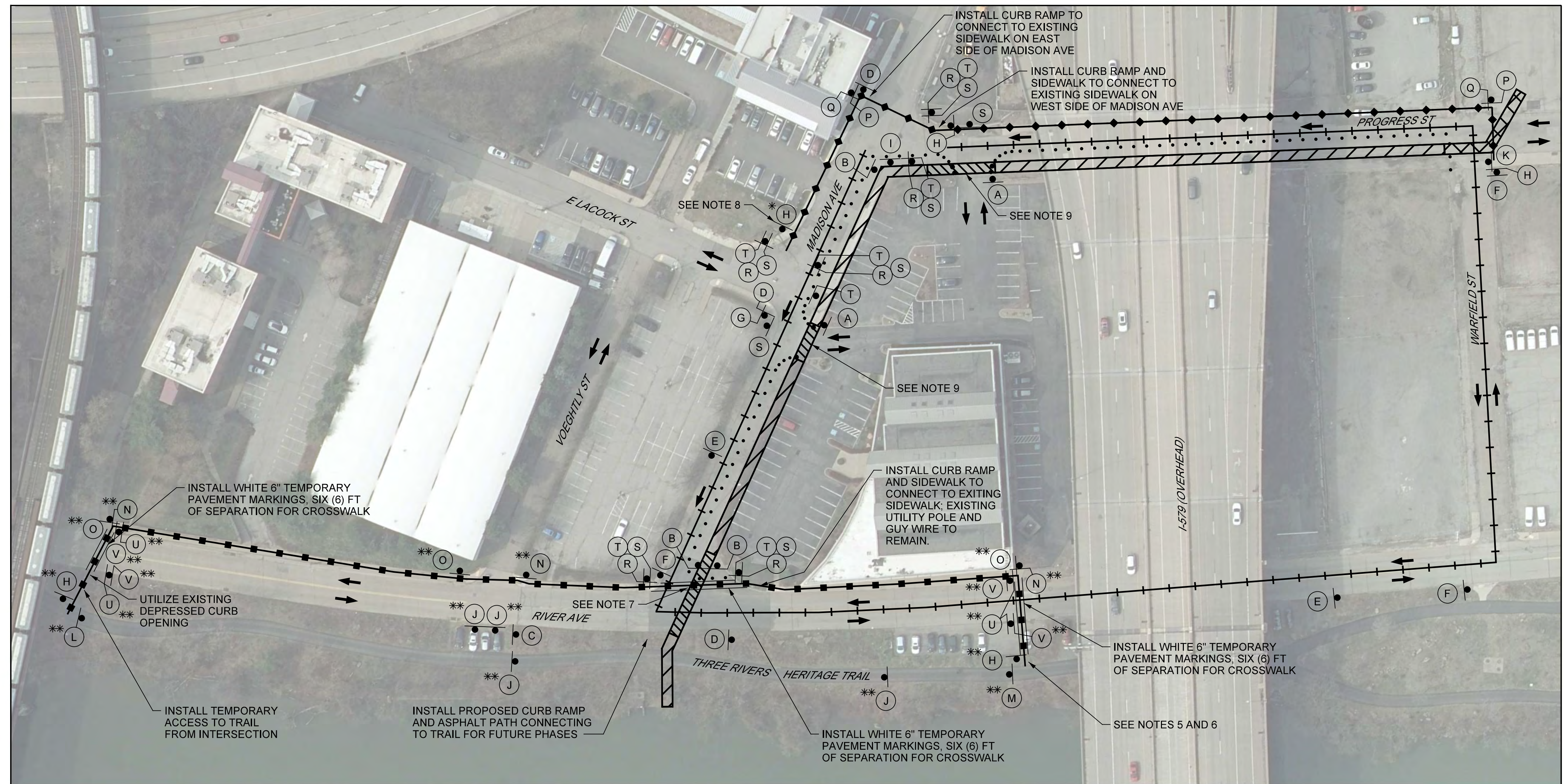
**ORT-TC-300
 A48 TRAFFIC CONTROL PLAN**

Contract:	1797
File:	ORT-TC-300.dwg
Date:	07/01/2025
Sheet:	761 OF 770

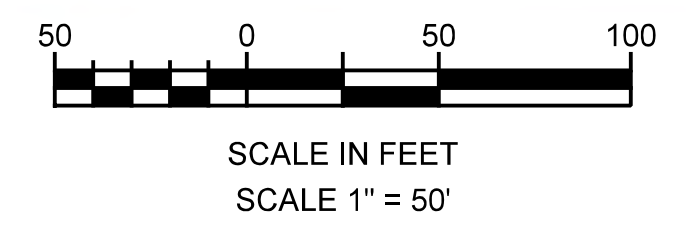
5/29/2025 3:54:37 PM \\PBGFS\Projects\10050_PA_ALCOSAN_0hioriv\300_CADD\Plan_Sett\Traffic\TCP\A58_MADISON_PROGRESS_DETOUR.dgn

SYMBOL	SIGN	NOMENCLATURE / SIZE/MOUNTING
(A)		R3-1 24"x24" POST MOUNTED
(B)		R11-2 48"x30" M4-10R 48"x18" TYPE III BARRICADE
(C)		W20-2 36"x36" W30-1-6 20"x6" POST MOUNTED
(D)		M4-9S 30"x24" POST MOUNTED
(E)		M4-9SL 30"x24" POST MOUNTED
(F)		M4-9L 30"x24" POST MOUNTED
(G)		M4-9R 30"x24" POST MOUNTED
(H)		M4-8A 24"x18" POST MOUNTED
(I)		R9-9 24"x12" TYPE II BARRICADE
(J)		R9-9 (MODIFIED) 24"x12" TYPE II BARRICADE
(K)		R9-11A 24"x12" TYPE II BARRICADE

SYMBOL	SIGN	NOMENCLATURE / SIZE/MOUNTING
(L)		R9-11A (MODIFIED) 24"x12" TYPE II BARRICADE
(M)		R9-11A (MODIFIED) 24"x12" TYPE II BARRICADE
(N)		M4-9A 30"x24" POST MOUNTED
(O)		M4-9A 30"x24" POST MOUNTED
(P)		M4-9B 30"x24" POST MOUNTED
(Q)		M4-9B 30"x24" POST MOUNTED
(R)		R5-1 30"x30" POST MOUNTED
(S)		R6-1L 36"x12" POST MOUNTED
(T)		R6-1R 36"x12" POST MOUNTED
(U)		W11-2 36"x36" W16-7P 24"x12" POST MOUNTED
(V)		W11-2 36"x36" W16-7P 24"x12" POST MOUNTED



PHASE 1 PROGRESS/MADISON - DEWATERING SEWER CONSTRUCTION
DETOUR PLAN



TRAFFIC CONTROL NOTES

1. MAINTAIN TRAFFIC AS SHOWN IN PLAN.
2. COMPLETE SHORT-TERM WORK ACROSS PROGRESS ST, RIVER AVE AND PARKING LOT DRIVEWAYS UTILIZING PATAS 107, 109-A AND 109-G. MAINTAIN TRAFFIC THROUGH THESE AREAS AT ALL TIMES.
3. PROGRESS ST IS TO BECOME ONE-WAY WESTBOUND DURING THIS DETOUR.
4. MADISON AVE IS TO BECOME ONE-WAY SOUTHBOUND DURING THIS DETOUR.
5. CONTRACTOR TO REMOVE PORTION OF EXISTING WOOD FENCE RAIL FOR STORAGE AND REINSTALL AFTER PHASE 1.
6. INSTALL TEMPORARY ASPHALT PAVEMENT CONNECTING EXISTING PARKING LOT TO TRAIL.
7. UPON COMPLETION OF THE WORK ACROSS THREE RIVERS HERITAGE TRAIL, REMOVE THE PEDESTRIAN DETOUR AND SIGNS DENOTED WITH (**) PRIOR TO COMPLETING THE SHORT-TERM WORK ACROSS RIVER AVE.
8. PLACE SIGN DENOTED WITH (*) ON TYPE II BARRICADE.
9. MAINTAIN DRIVEWAY ACCESS AT ALL TIMES.

LEGEND

(A)	TRAFFIC CONTROL SIGN AND SYMBOL
—+—+—+—	VEHICULAR DETOUR ROUTE
—●—●—●—	PEDESTRIAN DETOUR ROUTE
—■—■—■—	PEDESTRIAN TRAIL DETOUR ROUTE
●	CHANNELIZING DEVICE
	WORK ZONE (AREA CLOSED)
	PART-WIDTH CONSTRUCTION WORK ZONE (AREA FLAGGED)
←	DIRECTION OF TRAFFIC FLOW
(*) (A)	PEDESTRIAN TRAIL DETOUR SIGN AND SYMBOL

Designed by:	REVISION		
T. LONG	REV No.	DATE	DESCRIPTION
Drawn by:			APPV
T. LONG			
Checked by:			
J. SCHULZE			

MOTT MACDONALD

Two Allegheny Center
Nova Tower 2, Suite 1301
Pittsburgh, PA 15212
(412) 497 - 2900

MCCORMICK TAYLOR

1000 Omega Drive
Suite 1550
Pittsburgh, Pennsylvania 15205
(412) 922-6880

REGISTERED PROFESSIONAL ENGINEER
JOHN CLAYTON SCHULZE
PENN. REG. NO. 10112

alcosan
allegheny county sanitary authority

ARLETTA SCOTT WILLIAMS
EXECUTIVE DIRECTOR, ALCOSAN

3300 PREBLE AVE.
PITTSBURGH, PA 15233
(412) 766 - 4810

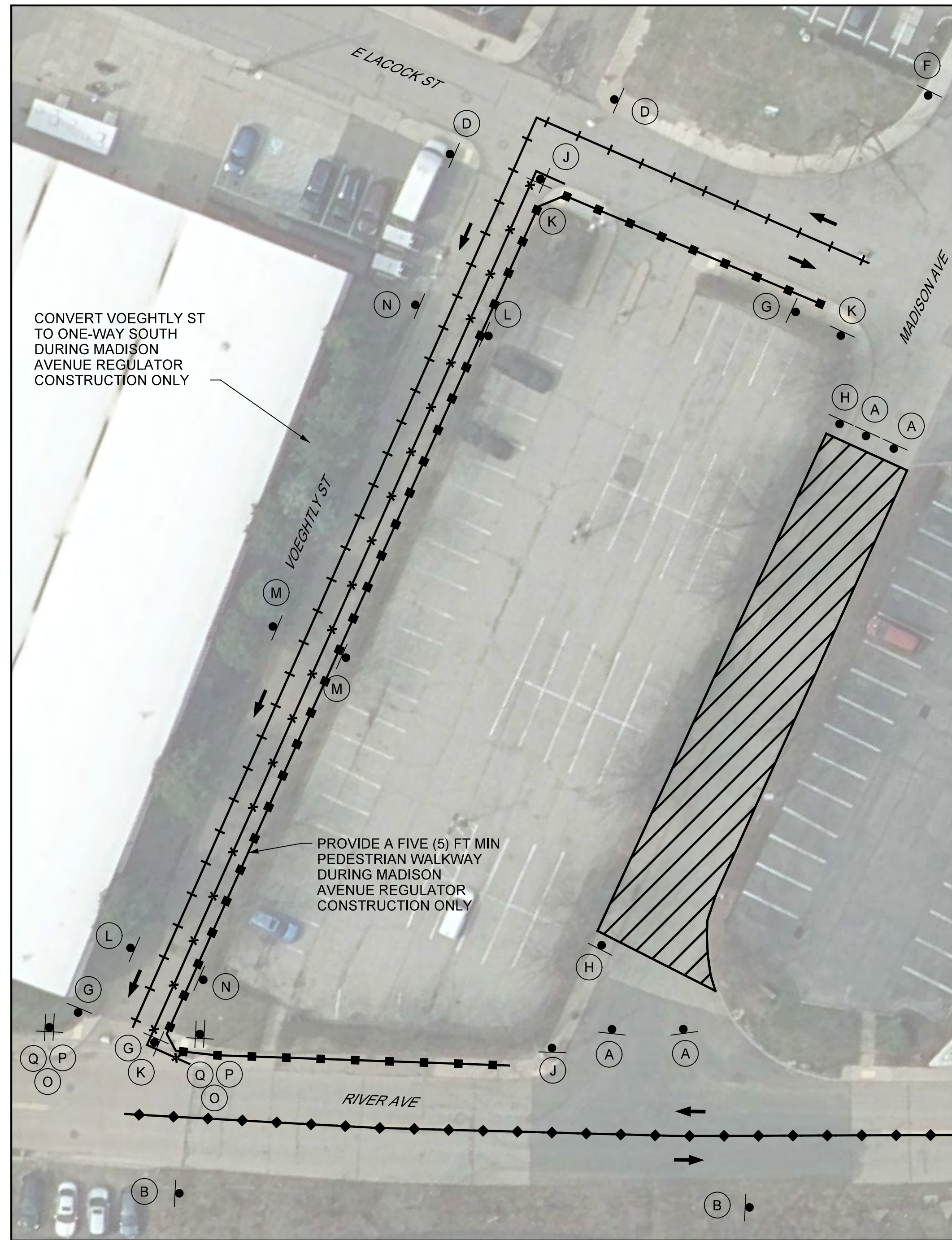
www.alcosan.org

ALLEGHENY COUNTY SANITARY AUTHORITY (ALCOSAN)
OHIO RIVER TUNNEL (ORT)

ORT-TC-400
A58 TRAFFIC CONTROL PLAN
DEWATERING DETOUR PHASE 1 OF 4

Contract:	1797
File:	ORT-TC-400.dwg
Date:	07/01/2025
Sheet:	762 OF 770

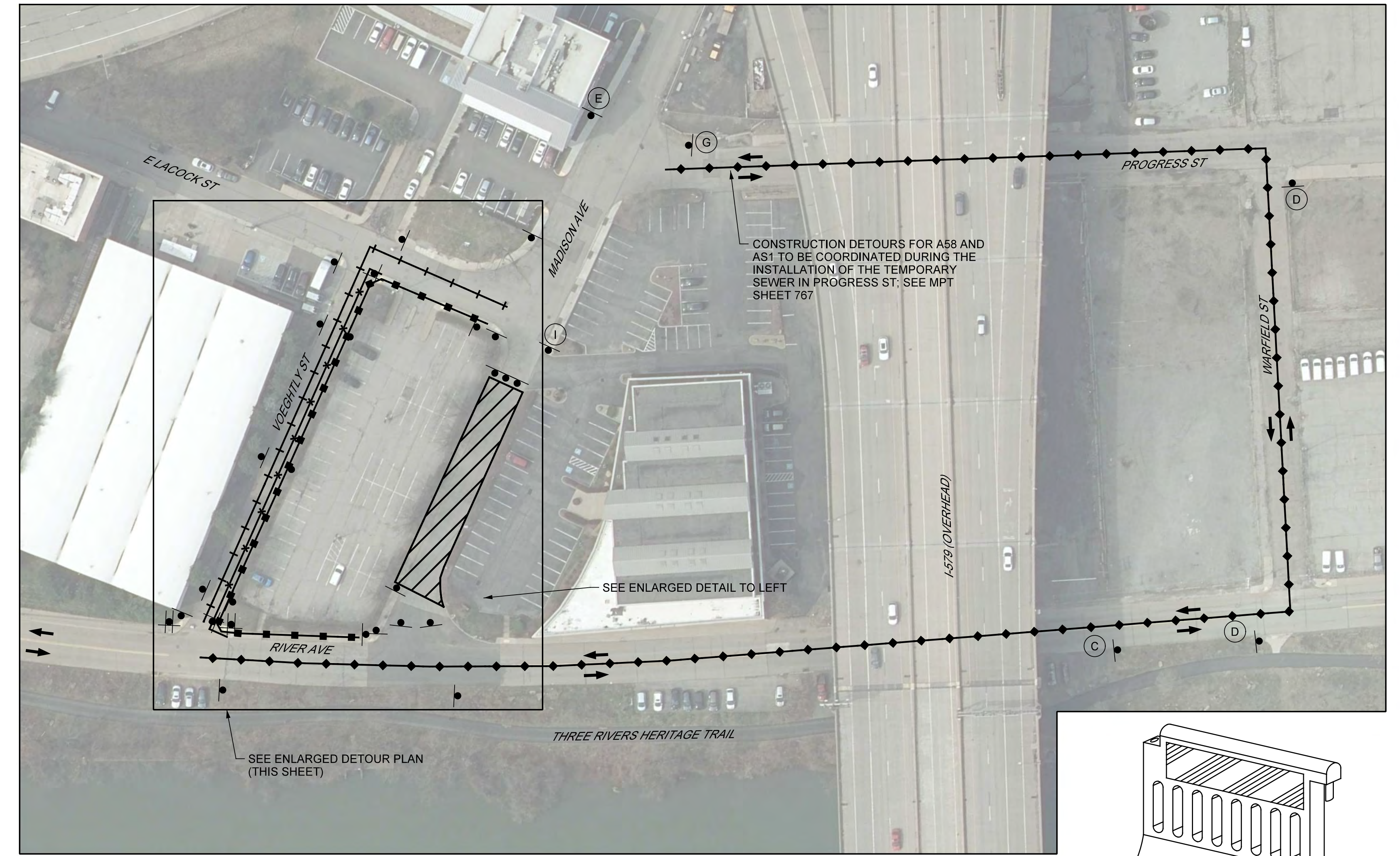
5/29/2025 3:55:17 PM \\PBGFS\Projects\10050_PA_ALCOSAN_0h\ort\iv\300_CADD\Plan_Sets\Traffic\TCP\A58_MADISON_DETOUR.dgn



PHASE 2 MADISON AVENUE - ORT OUTFALL CONSTRUCTION
SCALE IN FEET
SCALE 1" = 25'

PHASE 2 MADISON AVENUE - ORT OUTFALL CONSTRUCTION
ENLARGED DETOUR PLAN

SYMBOL	SIGN	NOMENCLATURE /SIZE/MOUNTING	SYMBOL	SIGN	NOMENCLATURE /SIZE/MOUNTING	SYMBOL	SIGN	NOMENCLATURE /SIZE/MOUNTING
(A)	ROAD CLOSED DETOUR	R11-2 48"x30" M4-10R 48"x18" TYPE III BARRICADE	(C)	DETOUR	M4-9SL 30"x24" POST MOUNTED	(E)	DETOUR	M4-9SR 30"x24" POST MOUNTED
(B)	DETOUR	M4-9S 30"x24" POST MOUNTED	(D)	DETOUR	M4-9L 30"x24" POST MOUNTED	(F)	DETOUR	M4-9R 30"x24" POST MOUNTED



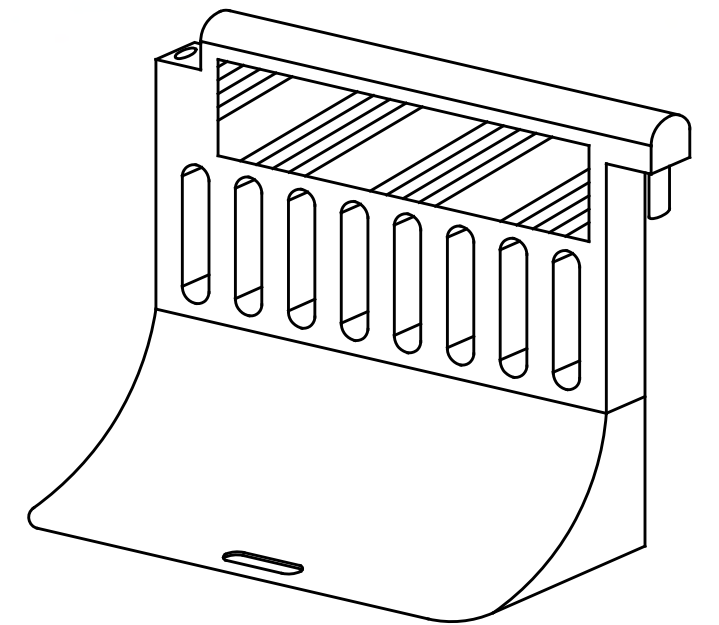
PHASE 2 MADISON AVENUE - ORT OUTFALL CONSTRUCTION
DETOUR PLAN

SCALE IN FEET
SCALE 1" = 50'

TRAFFIC CONTROL NOTES

1. MAINTAIN TRAFFIC AS SHOWN IN PLAN.
2. MADISON AVENUE TO BE CLOSED ONLY FOR REGULATOR CONSTRUCTION.
3. VOEGHTLY ST IS TO BECOME ONE-WAY SOUTHBOUND DURING THIS DETOUR.
4. DO NOT CLOSE MADISON AVE WHEN VOEGHTLY ST OR PROGRESS ST IS CLOSED.

SYMBOL	SIGN	NOMENCLATURE /SIZE/MOUNTING	SYMBOL	SIGN	NOMENCLATURE /SIZE/MOUNTING	SYMBOL	SIGN	NOMENCLATURE /SIZE/MOUNTING
(G)	END DETOUR	M4-8A 24"x18" POST MOUNTED	(J)	DETOUR	M4-9B 30"x24" POST MOUNTED	(M)	NO LEFT TURN	R7-302 12"x18" POST MOUNTED
(H)	SIDEWALK CLOSED	R9-9 24"x12" TYPE II BARRICADE	(K)	DETOUR	M4-9B 30"x24" POST MOUNTED	(N)	NO LEFT TURN	R7-302 12"x18" POST MOUNTED
(I)	SIDEWALK CLOSED CROSS HERE	R9-11A 24"x12" TYPE II BARRICADE	(L)	NO LEFT TURN	R7-302 12"x18" POST MOUNTED	(O)	DO NOT ENTER	R5-1 30"x30" POST MOUNTED



TEMPORARY PEDESTRIAN BARRICADE DETAIL
NOT TO SCALE

1. PEDESTRIAN BARRICADES TO MEET ALL MUTCD AND ADA REQUIREMENTS.

LEGEND

- (A) TRAFFIC CONTROL SIGN AND SYMBOL
- +—+—+— VEHICULAR DETOUR ROUTE SOUTHBOUND
- ◆—◆—◆ VEHICULAR DETOUR ROUTE NORTHBOUND
- PEDESTRIAN DETOUR ROUTE
- *—*—* PEDESTRIAN BARRICADE
- ▨ WORK ZONE (AREA CLOSED)
- ← DIRECTION OF TRAFFIC FLOW

DESIGNED BY:	REV. NO.	DATE	REVISION DESCRIPTION	APPV
T. LONG				
Drawn by:				
T. LONG				
Checked by:				
J. SCHULZE				

MOTT MACDONALD
Two Allegheny Center
Nova Tower 2, Suite 1301
Pittsburgh, PA 15212
(412) 497 - 2900

MCCORMICK TAYLOR
1000 Omega Drive
Suite 1550
Pittsburgh, Pennsylvania 15205
(412) 922-6880

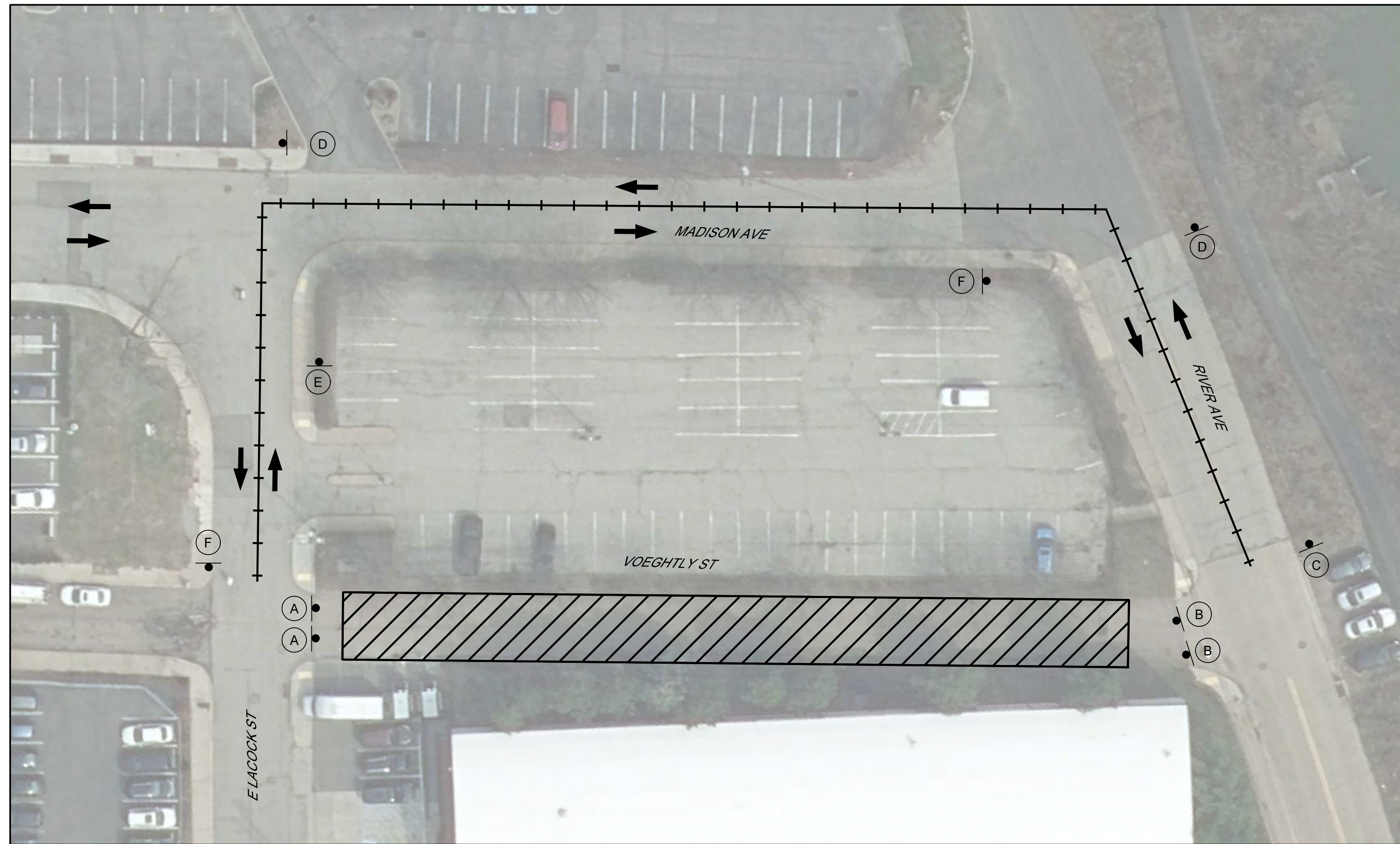
REGISTERED PROFESSIONAL ENGINEER
JOHN CLAYTON SCHULZE
No. 100131
PENNSYLVANIA

ALCOSAN
alleggheny county sanitary authority
ARLETTA SCOTT WILLIAMS
EXECUTIVE DIRECTOR, ALCOSAN
3300 PREBLE AVE.
PITTSBURGH, PA 15233
(412) 766 - 4810
www.alcosan.org

ALLEGHENY COUNTY SANITARY AUTHORITY (ALCOSAN)
OHIO RIVER TUNNEL (ORT)
ORT-TC-401
A58 TRAFFIC CONTROL PLAN
MADISON AVE DETOUR PHASE 2 OF 4

Contract:	1797
File:	ORT-TC-401.dwg
Date:	07/01/2025
Sheet:	763 OF 770

5/29/2025 3:55:33 PM \\PBGFS\Projects\10050_PA_ALCOSAN_0hioriv\300_CADD\Plan_Set\Traffic\TCP\A58_VOEGHTLY_DETOUR.dgn



PHASE 3 VOEGHTLY STREET - ORT OUTFALL CONSTRUCTION
DETOUR PLAN

SYMBOL	SIGN	NOMENCLATURE /SIZE/MOUNTING
(A)		R11-2 48"x30" M4-10L 48"x18" TYPE III BARRICADE
(B)		R11-2 48"x30" M4-10R 48"x18" TYPE III BARRICADE
(C)		M4-9SL 30"x24" POST MOUNTED
(D)		M4-9L 30"x24" POST MOUNTED
(E)		M4-9R 30"x24" POST MOUNTED
(F)		M4-8A 24"x18" POST MOUNTED

LEGEND

	TRAFFIC CONTROL SIGN AND SYMBOL
	VEHICULAR DETOUR ROUTE
	WORK ZONE (AREA CLOSED)
	DIRECTION OF TRAFFIC FLOW

- TRAFFIC CONTROL NOTES**
1. MAINTAIN TRAFFIC AS SHOWN IN PLAN.
 2. VOEGHTLY ST TO BE CLOSED ONLY FOR REGULATOR CONSTRUCTION.
 3. DO NOT CLOSE VOEGHTLY ST WHEN MADISON AVE IS CLOSED.



SCALE IN FEET
SCALE 1" = 25'

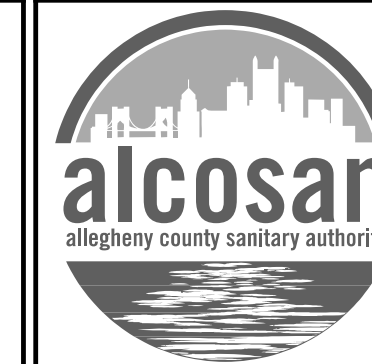
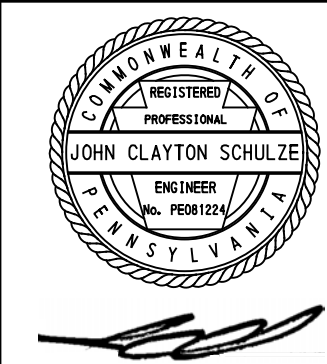
Designed by:	REVISION			
	REV No.	DATE	DESCRIPTION	APPV
T. LONG				
Drawn by:				
T. LONG				
Checked by:				
J. SCHULZE				

MOTT MACDONALD

Two Allegheny Center
Nova Tower 2, Suite 1301
Pittsburgh, PA 15212
(412) 497 - 2900

McCORMICK TAYLOR

1000 Omega Drive
Suite 1550
Pittsburgh, Pennsylvania 15205
(412) 922-6880



ARLETTA SCOTT WILLIAMS
EXECUTIVE DIRECTOR, ALCOSAN

3300 PREBLE AVE.
PITTSBURGH, PA 15233
(412) 766 - 4810

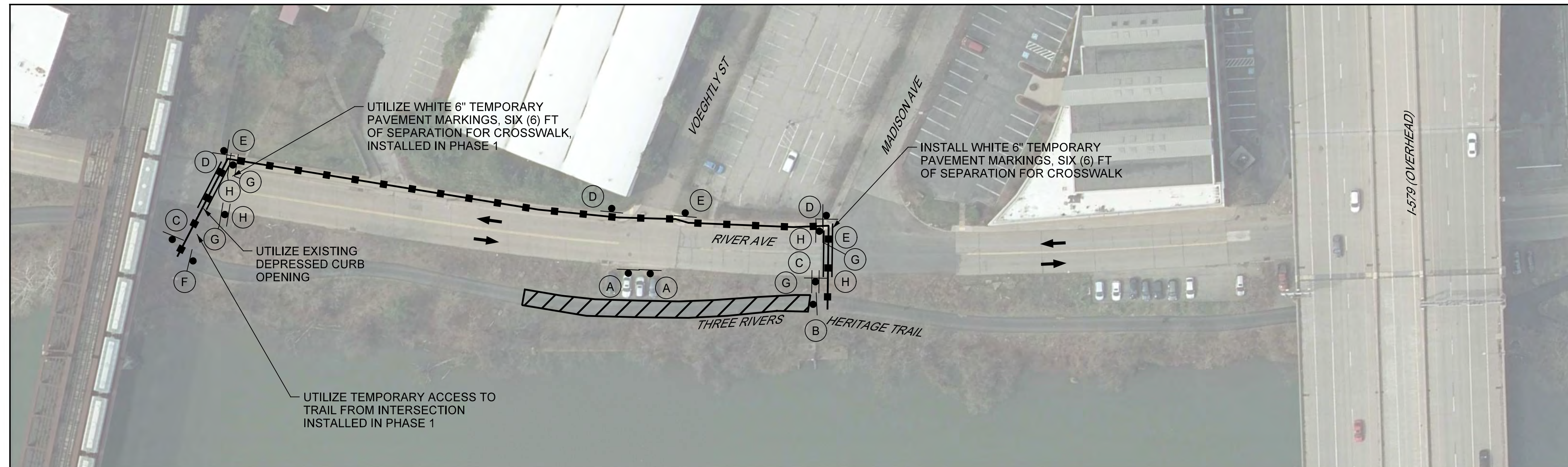
www.alcosan.org

ALLEGHENY COUNTY SANITARY AUTHORITY (ALCOSAN)
OHIO RIVER TUNNEL (ORT)

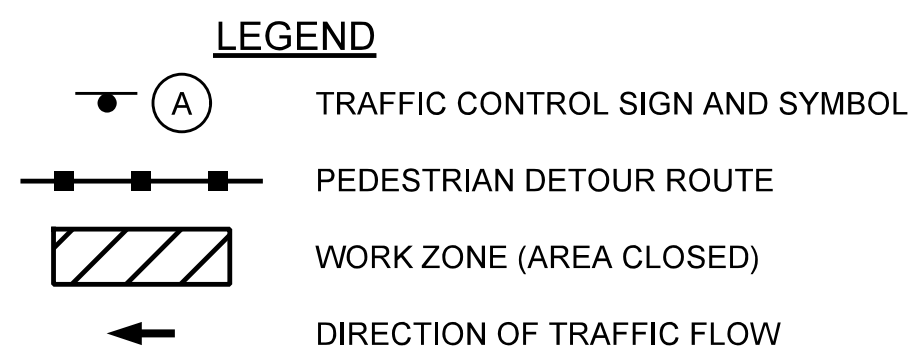
ORT-TC-402
A58 TRAFFIC CONTROL PLAN
VOEGHTLY DETOUR PHASE 3 OF 4

Contract:	1797
File:	ORT-TC-402.dwg
Date:	07/01/2025
Sheet:	764 OF 770

5/29/2025 3:56:24 PM \\PBGS\Projects\10050_PA_ALCOSAN_0hioriv\300_CADD\Plan_Set\Traffic\TCP\A58_TRAIL_PED_DETOUR_1.dgn



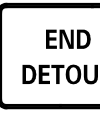







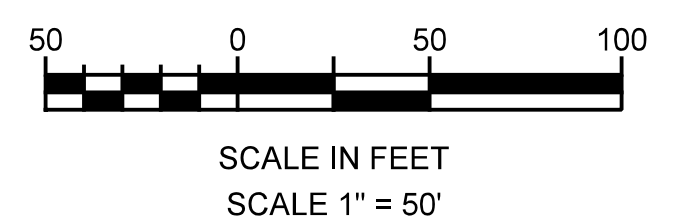
PHASE 4 TRAIL DETOUR MADISON AVENUE - ORT OUTFALL CONSTRUCTION
DETOUR PLAN



TRAFFIC CONTROL NOTES

1. MAINTAIN TRAFFIC AS SHOWN IN PLAN.
2. TRAIL TO CLOSE DURING CONSTRUCTION OF OUTFALL ONLY.

SYMBOL	SIGN	NOMENCLATURE /SIZE/MOUNTING
(A)		R9-9 (MODIFIED) 24"x12" TYPE II BARRICADE
(B)		R9-11A (MODIFIED) 24"x12" TYPE II BARRICADE
(C)		M4-8A 24"x18" POST MOUNTED
(D)		M4-9A 30"x24" POST MOUNTED
(E)		M4-9A 30"x24" POST MOUNTED
(F)		R9-11A (MODIFIED) 24"x12" TYPE II BARRICADE
(G)		W11-2 36"x36" W16-7P 24"x12" POST MOUNTED
(H)		W11-2 36"x36" W16-7P 24"x12" POST MOUNTED



Designed by:	REVISION		
	REV No.	DATE	DESCRIPTION
T. LONG			
Drawn by:			
T. LONG			
Checked by:			
J. SCHULZE			

MOTT MACDONALD

Two Allegheny Center
Nova Tower 2, Suite 1301
Pittsburgh, PA 15212
(412) 497 - 2900

McCORMICK TAYLOR

1000 Omega Drive
Suite 1550
Pittsburgh, Pennsylvania 15205
(412) 922-6880

JOHN CLAYTON SCHULZE
REGISTERED PROFESSIONAL ENGINEER
PENNSYLVANIA

alcosan
alleggheny county sanitary authority

ARLETTA SCOTT WILLIAMS
EXECUTIVE DIRECTOR, ALCOSAN

3300 PREBLE AVE.
PITTSBURGH, PA 15233
(412) 766 - 4810

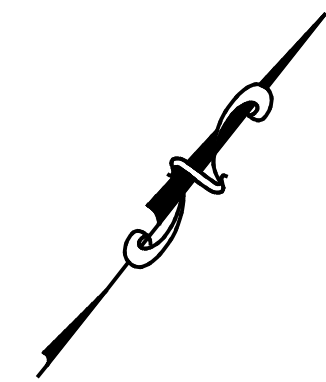
www.alcosan.org

ALLEGHENY COUNTY SANITARY AUTHORITY (ALCOSAN)
OHIO RIVER TUNNEL (ORT)

ORT-TC-403
A58 TRAFFIC CONTROL PLAN
TRAIL DETOUR PHASE 4 OF 4

Contract:	1797
File:	ORT-TC-403.dwg
Date:	07/01/2025
Sheet:	765 OF 770

5/29/2025 3:56:40 PM \\PBGFS\Projects\10050_PA_ALCOSAN_0hioriv\300_CADD\Plan_Set\Traffic\TCP\AS1_SITE_PLAN_1.dgn

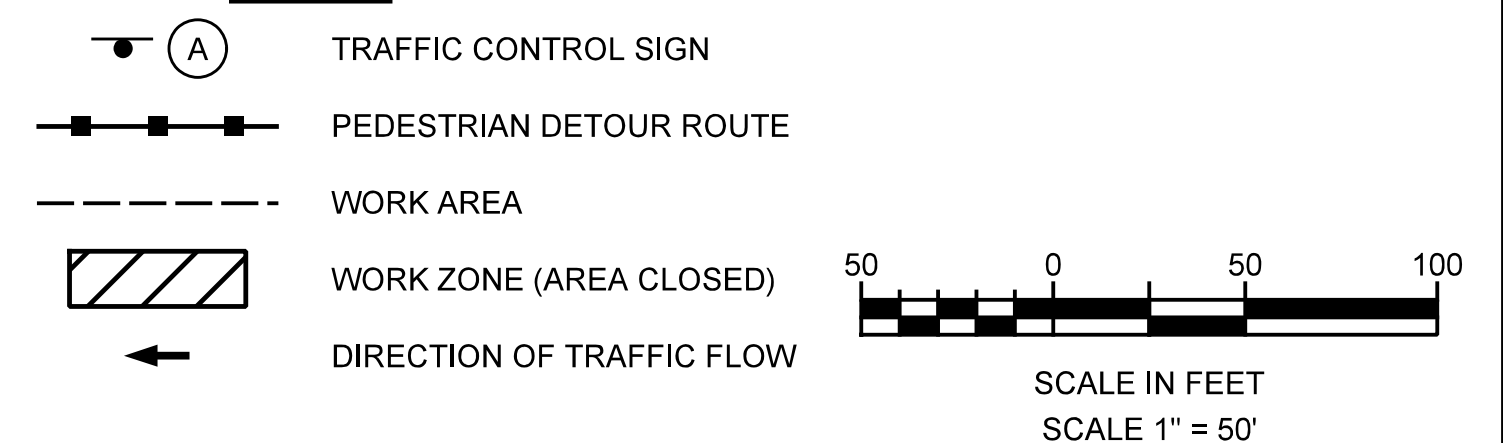


SYMBOL	SIGN	NOMENCLATURE /SIZE/MOUNTING
(A)		R11-2 48"x30" TYPE III BARRICADE
(B)		R9-11A 24"x12" TYPE II BARRICADE
(C)		R9-11A 24"x12" TYPE II BARRICADE
(D)		M4-9B 30"x24" POST MOUNTED
(E)		M4-9B 30"x24" POST MOUNTED
(F)		M4-8A 24"x18" POST MOUNTED
(G)		R7-302 12"x18" POST MOUNTED
(H)		R7-302 12"x18" POST MOUNTED
(I)		R7-302 12"x18" POST MOUNTED
(J)		R9-9 30"x18" TYPE II BARRICADE

TRAFFIC CONTROL NOTES

1. MAINTAIN TRAFFIC AS SHOWN IN PLAN.
2. CHESTNUT ST SIDEWALK AND BUS STOP AT CHESTNUT ST AND PROGRESS ST INTERSECTION MUST REMAIN OPEN AT ALL TIMES.
3. WESTERN SIDEWALK ALONG CHESTNUT ST TO REMAIN OPEN TO A FIVE (5) FT MINIMUM WIDTH AT ALL TIMES.
4. SEE SHEET 767 FOR TRAFFIC CONTROL SETUP DURING SEWER LINE CONNECTION FROM MADISON AVE TO AS1 SITE CONSTRUCTION.

LEGEND



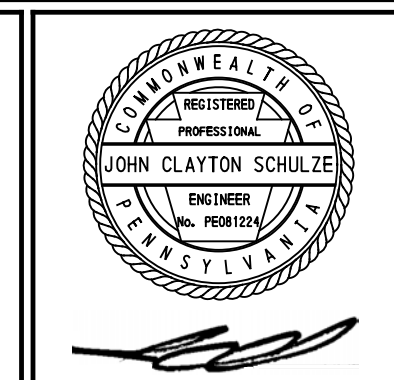
Designed by:	REVISION		
T. LONG	REV No.	DATE	DESCRIPTION
Drawn by:			
T. LONG			
Checked by:			
J. SCHULZE			

MOTT MACDONALD

Two Allegheny Center
Nova Tower 2, Suite 1301
Pittsburgh, PA 15212
(412) 497 - 2900

MCCORMICK TAYLOR

1000 Omega Drive
Suite 1550
Pittsburgh, Pennsylvania 15205
(412) 922-6880



alcosan
allegheny county sanitary authority

ARLETTA SCOTT WILLIAMS
EXECUTIVE DIRECTOR, ALCOSAN

3300 PREBLE AVE.
PITTSBURGH, PA 15233
(412) 766 - 4810

www.alcosan.org

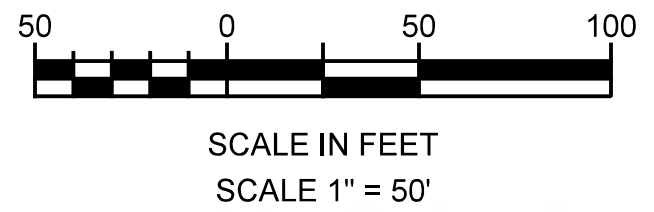
ALLEGHENY COUNTY SANITARY AUTHORITY (ALCOSAN)
OHIO RIVER TUNNEL (ORT)

ORT-TC-500
AS1 TRAFFIC CONTROL PLAN
SHEET 1 OF 2

Contract:	1797
File:	ORT-TC-500.dwg
Date:	07/01/2025
Sheet:	766 OF 770

5/29/2025 3:57:37 PM \\PBGF\S\Projects\10050_PA_ALCOSAN_0h\oriv\300_CADD\Plan_Set\Traffic\TCP\AS1_SITE_PLAN_2.dgn

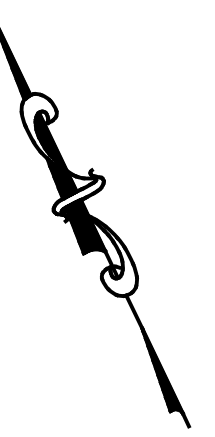
SYMBOL	SIGN	NOMENCLATURE /SIZE/MOUNTING	SYMBOL	SIGN	NOMENCLATURE /SIZE/MOUNTING	SYMBOL	SIGN	NOMENCLATURE /SIZE/MOUNTING
(A)		R11-2 48"x30" TYPE III BARRICADE	(G)		M4-9R 30"x24" POST MOUNTED	(M)		M4-9B 30"x24" POST MOUNTED
(B)		R11-2 48"x30" M4-10L 48"x18" TYPE III BARRICADE	(H)		M4-9S 30"x24" POST MOUNTED	(N)		M4-9B 30"x24" POST MOUNTED
(C)		R11-2 48"x30" M4-10R 48"x18" TYPE III BARRICADE	(I)		M4-8A 24"x18" POST MOUNTED	(O)		R7-302 12"x18" POST MOUNTED
(D)		W20-2 36"x36" W30-1-6 20"x6" POST MOUNTED	(J)		R9-9 30"x18" TYPE II BARRICADE	(P)		R7-302 12"x18" POST MOUNTED
(E)		M4-9SL 30"x24" POST MOUNTED	(K)		R9-11A 24"x12" TYPE II BARRICADE	(Q)		R7-302 12"x18" POST MOUNTED
(F)		M4-9L 30"x24" POST MOUNTED	(L)		R9-11A 24"x12" TYPE II BARRICADE			



- TRAFFIC CONTROL NOTES**
1. MAINTAIN TRAFFIC AS SHOWN IN PLAN.
 2. CHESTNUT ST SIDEWALK AND BUS STOP AT CHESTNUT ST AND PROGRESS ST INTERSECTION MUST REMAIN OPEN AT ALL TIMES.
 3. WESTERN SIDEWALK ALONG CHESTNUT ST TO REMAIN OPEN TO A FIVE (5) FT MINIMUM WIDTH AT ALL TIMES.
 4. A PEDESTRIAN PATH WITH A MINIMUM WIDTH OF FIVE (5) FT MUST BE MAINTAINED ALONG THE SOUTHERN SIDE OF PROGRESS ST.
 5. UTILIZE SHEET 766 FOR TRAFFIC CONTROL SETUP IF THE SEWER LINE CONNECTION FROM MADISON AVE TO AS1 SITE IS NOT UNDER CONSTRUCTION.
 6. DO NOT CLOSE PROGRESS ST WHEN MADISON AVE CLOSED.
 7. UPON COMPLETION OF WORK, THE CONTRACTOR IS TO MILL AND PAVE THE DISTURBED ROADWAY ALONG PROGRESS ST UTILIZING PENNDOT PUBLICATION 213, PATA 107 AS NEEDED.
- LEGEND**
- (A) TRAFFIC CONTROL SIGN AND SYMBOL
 - VEHICULAR DETOUR ROUTE
 - - - PEDESTRIAN DETOUR ROUTE
 - WORK AREA
 - [Hatched Box] WORK ZONE (AREA CLOSED)
 - [Cross-hatched Box] AREA OF CLOSURE FOR SEWER LINE CONNECTION
 - ← DIRECTION OF TRAFFIC FLOW

Designed by: T. LONG	REV No.	DATE	REVISION DESCRIPTION	APPV	 Two Allegheny Center Nova Tower 2, Suite 1301 Pittsburgh, PA 15212 (412) 497 - 2900	 1000 Omega Drive Suite 1550 Pittsburgh, Pennsylvania 15205 (412) 922-6880	 JOHN CLAYTON SCHULZE REGISTERED PROFESSIONAL ENGINEER No. 1001114 PENNSYLVANIA	 ALLEGHENY COUNTY SANITARY AUTHORITY 3300 PREBLE AVE. PITTSBURGH, PA 15233 (412) 766 - 4810 www.alcosan.org	ALLEGHENY COUNTY SANITARY AUTHORITY (ALCOSAN) OHIO RIVER TUNNEL (ORT) ORT-TC-501 AS1 TRAFFIC CONTROL PLAN SHEET 2 OF 2	Contract: 1797
Drawn by: T. LONG				File: ORT-TC-501.dwg						
Checked by: J. SCHULZE				Date: 07/01/2025						
				Sheet: 767 OF 770						

5/29/2025 3:58:17 PM \\PBGFS\Projects\10050_PA_ALCOSAN_01\Traffic\Traffic\TCP\014_SITE_PLAN.dgn



SYMBOL	SIGN	NOMENCLATURE /SIZE/MOUNTING
(A)		R11-2 48"x30" TYPE III BARRICADE
(B)		R11-2 48"x30" M4-10L 48"x18" TYPE III BARRICADE
(C)		W20-2 36"x36" W30-1-6 20"x6" POST MOUNTED

SYMBOL	SIGN	NOMENCLATURE /SIZE/MOUNTING
(D)		M4-9S 30"x24" POST MOUNTED
(E)		M4-8A 24"x18" POST MOUNTED

SYMBOL	PCMS MESSAGE 1	PCMS MESSAGE 2
(F)		PA 51 NORTH SIGNS

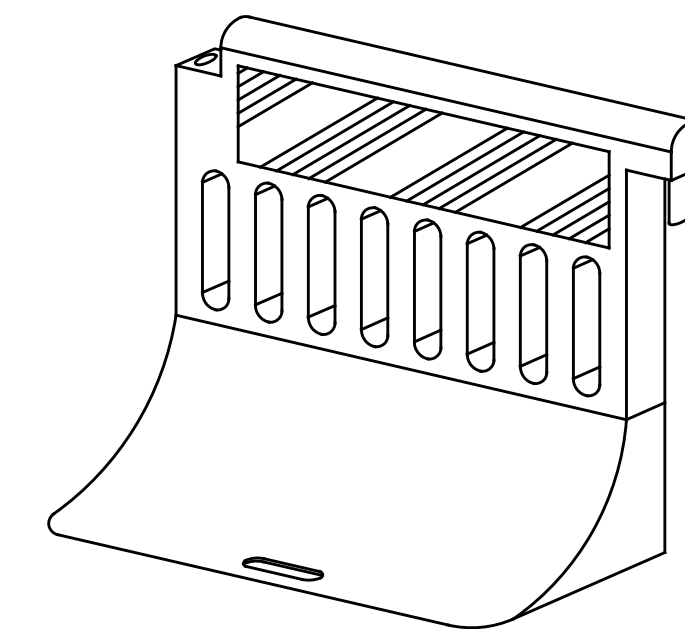
SYMBOL	GUIDESIGN PANEL OVERLAY	MODIFIED GUIDESIGN
(G)		
(H)		

GUIDESIGN NOTES

- SIGN G OVERLAY PANEL TO HAVE ORANGE (REFLECTORIZED) BACKGROUND WITH BLACK (NON-REFLECTORIZED) LEGEND.
- SIGN H OVERLAY PANEL TO HAVE AN ORANGE (REFLECTORIZED) BACKGROUND.

TRAFFIC CONTROL NOTES

- MAINTAIN TRAFFIC AS SHOWN IN PLAN.
- CONTRACTOR TO SECURE W. CARSON ST RAMP (SR 3106) DETOUR AND ALL ASSOCIATED PERMITS FOR SIDEWALK REPLACEMENT WHILE ACCOMMODATING ACCESS WITH LOCAL PROPERTY OWNERS ALONG W. CARSON ST RAMP AND PEDESTRIAN ACCESS. COORDINATE WITH PITTSBURGH REGIONAL TRANSIT, AS REQUIRED.
- LOCAL VEHICLE ACCESS TO RIVERSIDE ST TO BE COORDINATED BY THE CONTRACTOR. VEHICLES TO BE ESCORTED AS NEEDED.
- PEDESTRIAN BARRICADES WITHIN THE WORK AREA MAY BE MOVED BY THE CONTRACTOR TO COMPLETE CONSTRUCTION. IF A CLEAR AND LEVEL PATH CANNOT BE MAINTAINED DURING CONSTRUCTION, THE CONTRACTOR WILL ESCORT PEDESTRIANS TO AND FROM LOCAL BUSINESSES AS NEEDED.
- CONTRACTOR TO VERIFY WITH PENNDOT IF TEMPORARY SIGNAL RETIMING IS REQUIRED DURING THE W CARSON ST DETOUR.
- MAINTAIN A TEN (10) FT MINIMUM TRAVEL LANE AND FIVE (5) FT MINIMUM PEDESTRIAN PATH ALONG W CARSON ST. IF THESE TWO REQUIREMENTS CAN NOT BE MET DURING CONSTRUCTION, UTILIZE TEMPORARY FLAGGING OPERATIONS TO ACCOMMODATE BOTH LOCAL VEHICULAR AND PEDESTRIAN TRAFFIC.
- COORDINATE ACCESS WITH LOCAL PROPERTY OWNERS ALONG W CARSON ST RAMP DURING THE ROADWAY CLOSURE.



TEMPORARY PEDESTRIAN BARRICADE DETAIL
NOT TO SCALE

- PEDESTRIAN BARRICADES TO MEET ALL MUTCD AND ADA REQUIREMENTS.

LEGEND

- (A) TRAFFIC CONTROL SIGN AND SYMBOL
- PEDESTRIAN DETOUR ROUTE
- WORK AREA
- PEDESTRIAN BARRICADE
- WORK ZONE (AREA CLOSED)
- CHANNELIZING DEVICE
- DIRECTION OF TRAFFIC FLOW



SCALE IN FEET
SCALE 1" = 50'

Designed by:	REVISION			APPV
	REV No.	DATE	DESCRIPTION	
T. LONG				
Drawn by:				
T. LONG				
Checked by:				
J. SCHULZE				

MOTT MACDONALD

Two Allegheny Center
Nova Tower 2, Suite 1301
Pittsburgh, PA 15212
(412) 497 - 2900

MCCORMICK TAYLOR

1000 Omega Drive
Suite 1550
Pittsburgh, Pennsylvania 15205
(412) 922-6880

REGISTERED PROFESSIONAL ENGINEER

JOHN CLAYTON SCHULZE

PA 001151

alcosan
allegheny county sanitary authority

ARLETTA SCOTT WILLIAMS
EXECUTIVE DIRECTOR, ALCOSAN

3300 PREBLE AVE.
PITTSBURGH, PA 15233
(412) 766 - 4810

www.alcosan.org

ALLEGHENY COUNTY SANITARY AUTHORITY (ALCOSAN)
OHIO RIVER TUNNEL (ORT)

ORT-TC-600
O14 TRAFFIC CONTROL PLAN

Contract:	1797
File:	ORT-TC-600.dwg
Date:	07/01/2025
Sheet:	768 OF 770