

REC'D CLERK'S OFFICE
2026 JUN 15 PM 1:33



PASSPORT ACADEMY
CHARTER SCHOOL

#WATS

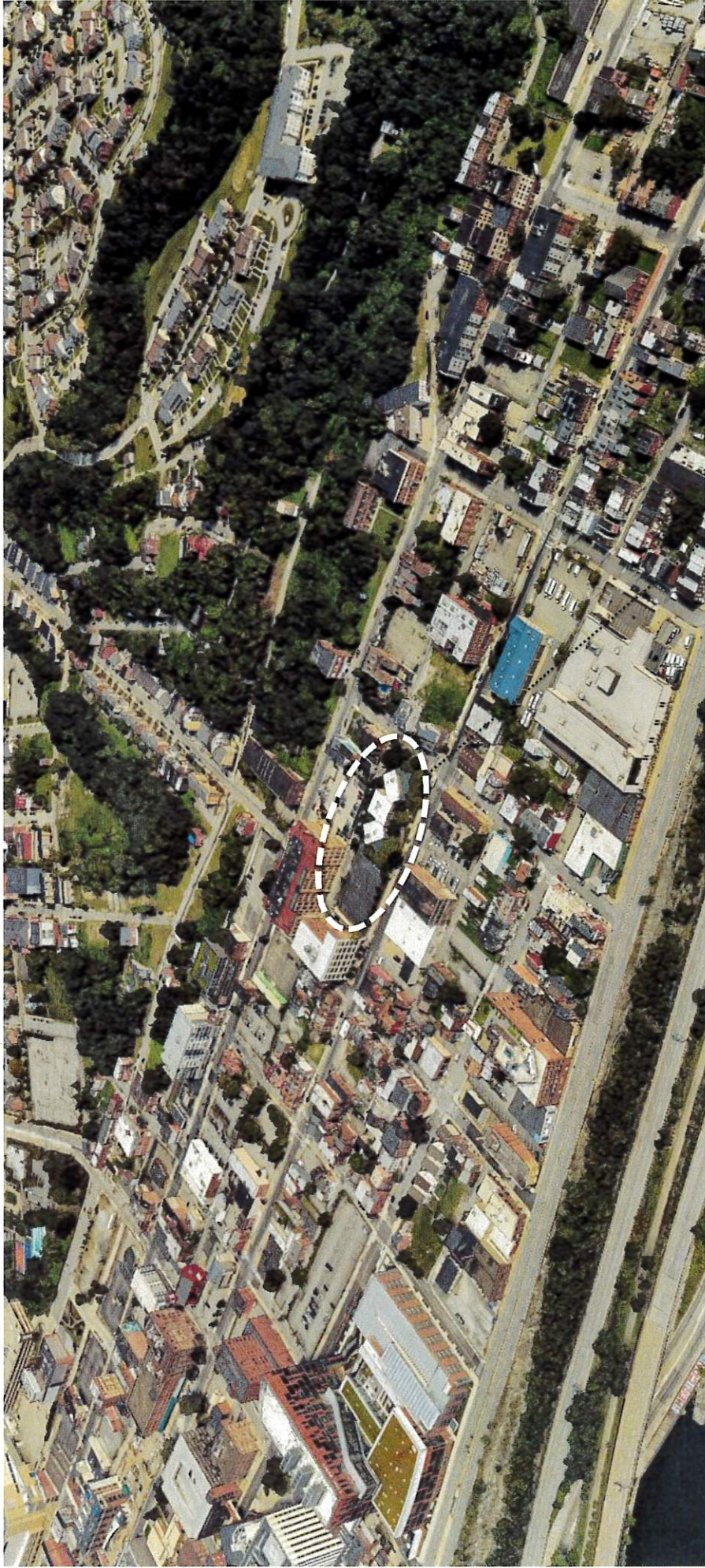
CONDITIONAL USE PUBLIC HEARING FOR
PASSPORT ACADEMY @ 1835 FORBES AVE

JUNE 15, 2026

**WILDMAN
CHALMERS**
DESIGN

Babst Calland
Attorneys at Law

1622 LOWRIE STREET
PITTSBURGH, PA 15212
412-436-9303
www.wildmanchalmers.com



PROJECT ADDRESS:

1835 FORBES AVENUE
AT GIST STREET

UPTOWN PUBLIC REALM DISTRICT B
SITE CONTEXT

WILDMAN
CHALMERS
DESIGN

PROXIMATE TO:

- Duquesne University / Medical School
- Point Park University
- UPMC Mercy

BUS STOP:

Fifth Ave Opp. Gist Street (3150)
61A, 61B, 61C, 71B Inbound

EXISTING BUILDING TO REMAIN

BUS STOP:

Forbes Ave at Gist Street (3248)
61A, 61B, 61C, 71B Outbound



SITE DETAILS

ORIGIN OF PASSPORT ACADEMY

- The vision for Passport Academy originated from the Board of Directors of the Hill House Association in 2013 in response to a lack of programming to support high-risk students from families in poverty; especially those residing in the Hill District.
- The board determined a need to create an alternative option to traditional secondary school options for those who did not find success.
- In discussing the mission of the school, the Board determined the need for such a program that would support students academically and include a career-ready component that would also lead to a high school diploma.

ABOUT PACS

- We are a public charter school (Not an approved private placement)
- We support students 16-21 years old from 15(+/-) Districts
- School is in its 12th year
- Enrollment periods (Summer/Fall-ends October 3rd) Winter (December/January-ends February)
- We have graduated more than 700 students since our school was founded
- Enrollment ranges from 125-150
- Small class sizes
- School is historically accessible by public transportation
- We offer a flexible model to support students:
 - Personalized Schedule
 - 2 in person sessions per day (AM-8:30-11:30, PM 12:30-3:30)
 - 3 hours of in person instruction and 2.5 hours of ANYTIME Learning
- School does not provide meals (other than healthy snacks)
- School does not have athletic facilities



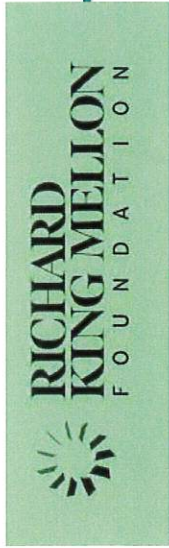
THE NEW OWNER/OCCUPANTS

ECONOMIC MOBILITY

**Passport Academy
Charter School**



toward support to develop a career-
pathways curriculum focused on preparing
students for family-sustaining employment
in the region



Study goals



Identify existing evidence
on promising approaches
for building career-oriented
competencies in alternative
high schools



Examine capacity
and current
practices
of PACS



Identify occupations that pay a family-sustaining wage
in the Pittsburgh region and skills and credentials associated with these occupations

PA Career Cluster	Typical Education
Architecture and Construction	HS/Post-Sec. Cert.
Manufacturing	HS/Assoc. Degree
Health Science	Associate's Degree
Transp., Distribution, and Logistics	HS/Post-Sec. Cert.
Arts, A/V Tech and Communication	HS
Business and Administration	HS
Gov. and Public Administration	HS
Law and Public Safety	HS/Assoc. Degree
Agriculture, Food and Natural Resource	HS
Marketing Sales and Service	HS



PACS PROGRAMS & HOW OUR GRADUATES IMPACT THE REGION

WILDMAN
CHALMERS
DESIGN

THANK YOU!

WILDMAN
CHALMERS
DESIGN



PASSPORT ACADEMY
CHARTER SCHOOL

Babst Calland
Attorneys at Law