



pctv
Make your mark.

May 19, 2023

Heidi Norman, Director
Department of Innovation and Performance
414 Grant Street, Room 604
Pittsburgh, PA 15219

Dear Heidi:

Enclosed please find PCTV's 2022 Annual Report. Included in the report are the following documents:

- Our 2022 audited financial statements.
- A current inventory of equipment.
- A report on new and enhanced revenues sources for 2022.

If you need any additional information, please let me know.

Sincerely,

John H. Patterson
Executive Director

cc:

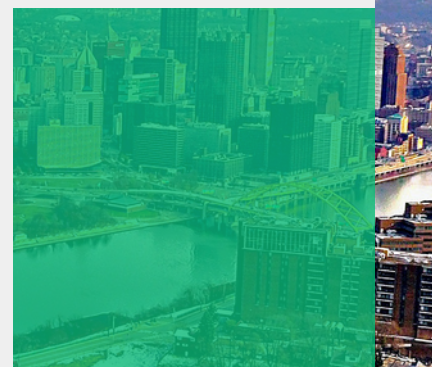
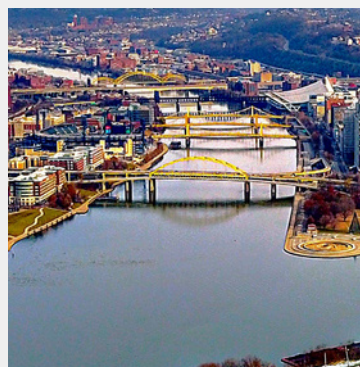
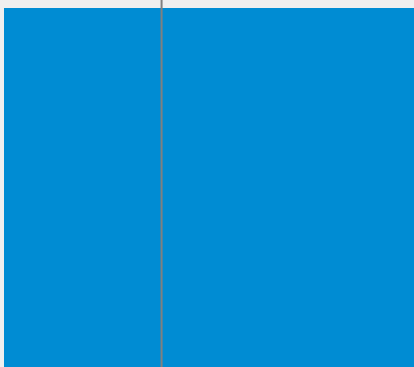
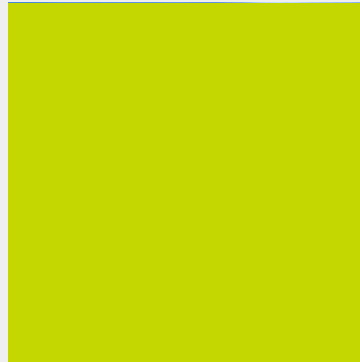
David Finer, Communications Technology Manager
Kimberly Clark-Baskin, City Clerk



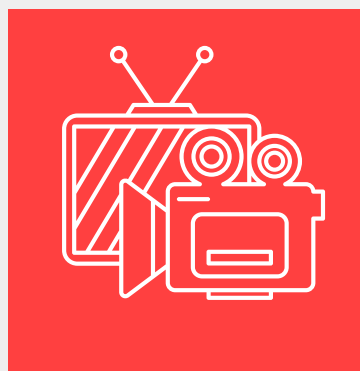


Annual Report 2022

Empowering, Educating and Enhancing
the Greater Pittsburgh Community
through Media



Explore More
→



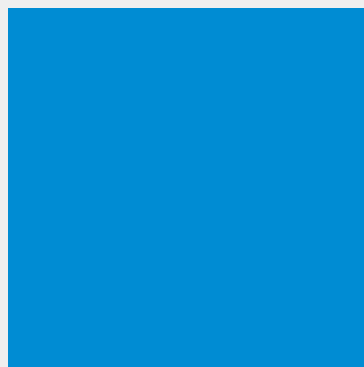
Message from the Executive Director

PCTV's mission is to empower, educate, and enhance the community through media. That's what we do, day in and day out. We give voice to Pittsburgh's diverse communities by giving them access to the tools and resources needed to create and distribute noncommercial media. It's what we've been doing for 37 years and it's what we'll continue to do as long as the community needs us. And the community does need us, now more than ever. Whether you are new to PCTV or an old friend, this annual report will give you a snapshot of what PCTV did in 2022. If you aren't involved with us, hopefully these pages will inspire you to become a member of PCTV and begin producing programming. To learn more, reach out to me personally at the contact info below.



John Patterson

Executive Director
john@pctv21.org
412-322-7570



Services

Building Community Through Media

PCTV makes media accessible to the public by providing low cost access to media education, media production facilities, media production equipment and program distribution.

Create Programming

TV Shows
Podcasts
Nonprofit Videos
Event Videos
Shorts for Social and Web

Learn Media

Video Production
Digital Editing
Podcasting
360 Video

Outreach

Community Media Awards
Northside Northshore Chamber
Pittsburgh Airport Area Chamber
Alliance for Community Media

Distribute & Watch

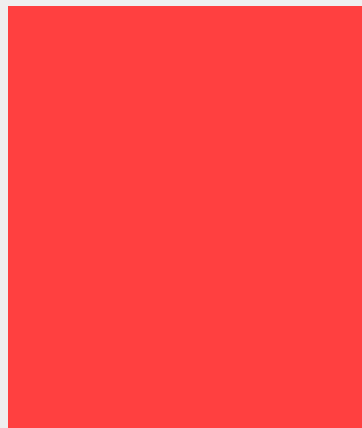
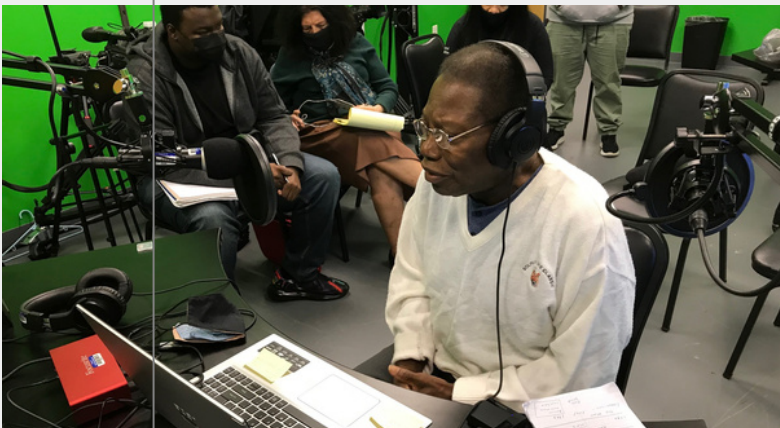
Comcast 21 & 1070
Verizon 47
Apple TV, ROKU, Fire TV
iOS, Apple devices
www.pctv21.org

Production Resources

2TV/Podcast Studios
Edit Lab
Portable gear
Experienced Staff

Production Services

PCTV available for hire
TV show production
Event Coverage
Nonprofit Promotional Videos



Membership

Who can be a member of PCTV?

Any individual, nonprofit or business in Allegheny County can become a member of PCTV. Membership gives you all the tools to create and distribute noncommercial programming on PCTV's network. To learn more about membership, contact Director of Communications and Engagement Carl Cimini at carl@pctv21.org or 412-322-7570 ext. 301.

Membership Benefits

- Media Training
- Discount on Studio Time
- Studio Technician with Studio Project Guidance
- Airtime on PCTV Network
- Own your own Content
- Edit Lab for self-serve edits
- Portable camera gear

How to Join & Use

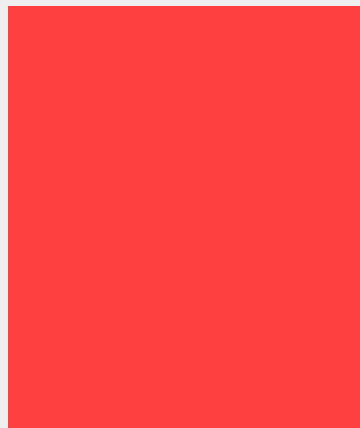
- Pay Your Fee
- Take Intro Training
- Propose Your Project
- Schedule Additional Training
- Begin Producing

Costs

- \$250/year for City of Pittsburgh residents
- \$350/year for Allegheny County residents
- \$50 hour for studio time
- Ability to get underwriters to cover your costs

Who Joins PCTV & Why

- Smart People and Organizations
- Nonprofits who need to get the word out
- Businesses with Expertise to share
- Individuals with an interest, talent, or passion
- To raise awareness of community issues
- To promote events and happenings
- To celebrate what's important to you
- To give kids a positive outlet
- To have fun and put a spotlight on Pittsburgh



Create Programming

What's on PCTV?

A little bit of everything. And it's designed that way. Because what you see on PCTV is by and for the community. Here's a snapshot of our programming from 2022.

Programming Numbers

1,866 hours of programming
1,635 shows aired
497 shows produced at PCTV
1,011 hours Free Speech TV
261 hours from Nonprofits

Program Categories

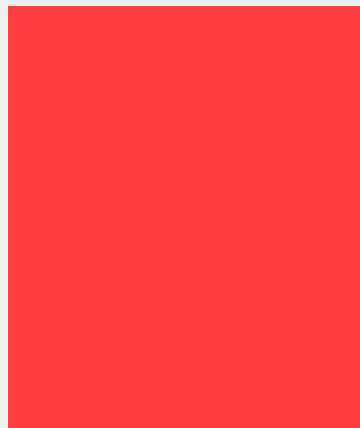
Arts, Film, Culture
Community
General Interest/Talk Show
Health & Lifestyle
Music & Entertainment
News, Issues & Public Affairs
Religious & Spiritual
Sports and Recreation
Youth

Notable Nonprofits Served

1 Hood Media
League of Women Voters
Focus on Renewal
Afro American Music Institute
A+ Schools

Programming Highlights

Comics on Life
Profiles In Pittsburgh
The Stephanie Smith Show
Paul Eugene Fitness
Arts & Music with Victor Janflone
Winning Images
Growing In Grace
Boxing Authorities
Teen Talk

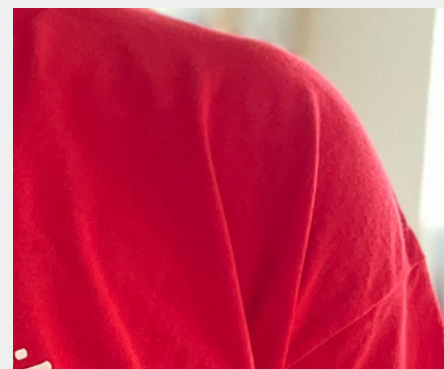
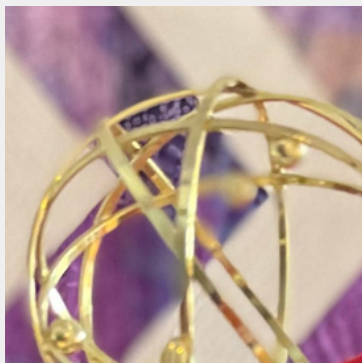
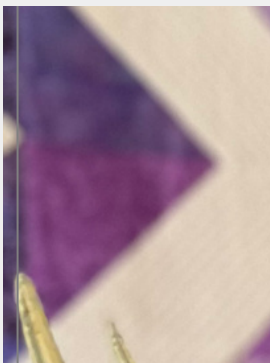
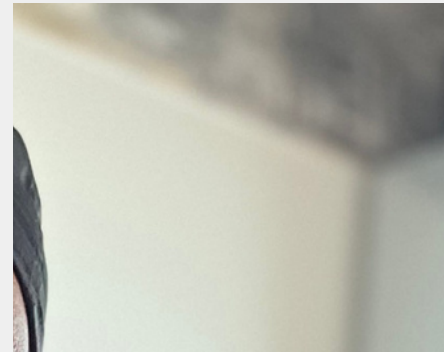


PCTV Member Stefon Braxton Wins Emmy!

In 2022 we received the exciting news that Pittsburgh resident Stefon Braxton, longtime member of PCTV, had won an Emmy for his PCTV produced show "Comics on Life". A professional comedian himself, Stefon interviews comics from all over the country on his show. PCTV's Director of Operations and Programming Gladys Jelks handles production duties on Streamyard, allowing Stefon to bring in his guests virtually from around the U.S. Way to go Stefon!



Congratulations Stefon!

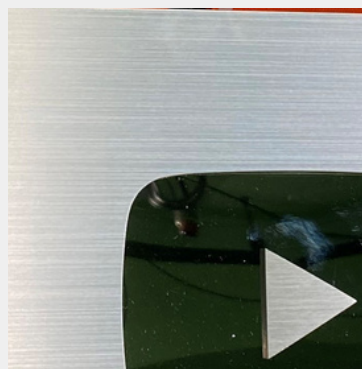
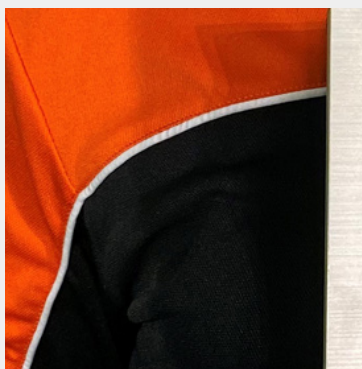
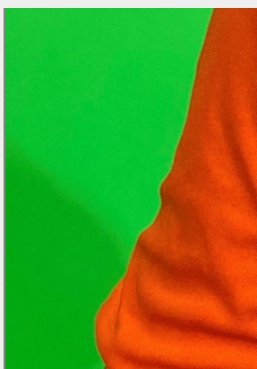
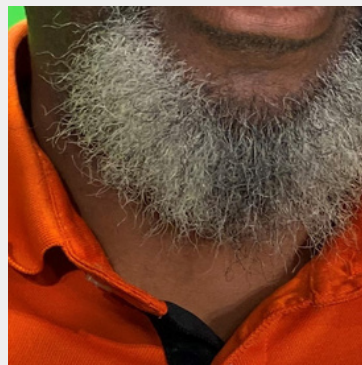
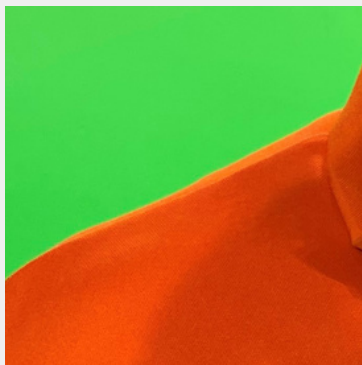
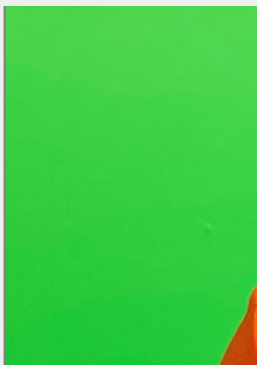
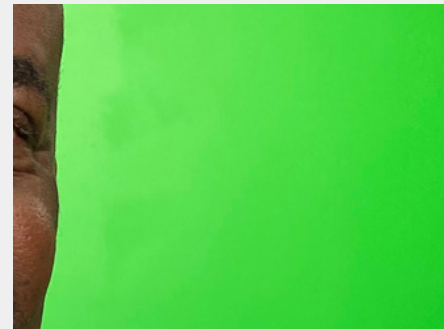


PCTV Member Paul Green wins recognition from YouTube!

PCTV member Paul Green has been producing his "Paul Eugene Fitness" show at PCTV for 20 years. We always encourage our members to get their work out far and wide in the world and Paul has been doing this for years. In addition to having his work on PCTV's network, he has had a YouTube channel for many years. Paul's programs have gathered millions of views and he has fans all over the world. In 2022, he received an award from YouTube for having 100,000 subscribers. Congrats to Mr. Green! Check out his YouTube Channel [here](#).



Congratulations Paul!



Learn Media

What can you learn at PCTV?

Lots. We're all about teaching and learning at PCTV. Learning media at PCTV is the beginning of a journey that can take you places you never imagined. Here's a snapshot of training at PCTV in 2022.

Classes Offered

PCTV Online Info Session
Online Orientation
Basic Field Camera
Studio Preproduction
Adobe Premiere Basics
Intro to 360 Video
Podcasting Basics
Orientation REV Up

Iota Phi Foundation

PCTV video instructor Kris Veenis spent eight weeks of Saturdays working with students in the Iota Phi Foundation's youth program.

They learned how to shoot and edit their own videos.

Thanks to the Izaak Wildberg Family Fund for funding this project.

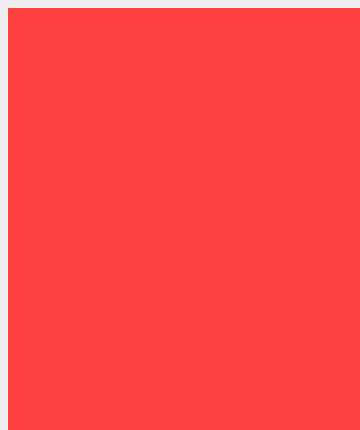
The 2022 Numbers

25 classes offered
87 views of online training
70 training certifications

Teen Talk with Learn & Earn

For six weeks in the summer of 2022, PCTV hosted four Learn & Earn students from Youth Enrichment Services. They learned all aspects of media production, including videography, editing, and studio production. Their time with PCTV culminated in the production of "Teen Talk", which they wrote, shot, edited and starred in.

Check it out [here](#).



Outreach

How do people learn about PCTV?

We're a well kept secret but we're changing that. Here are the many ways we reach out to the community. Interested in a tour? Contact Carl Cimini, Director of Communications and Engagement, at carl@pctv21.org or 412-322-7570 ext. 301.

Active Membership

PCTV is actively engaged with the [Northside Northshore Chamber](#), and the [Community Bridge Building Network](#).

These longstanding community organizations are a great way to build awareness of PCTV.

Take a Tour

One of the best ways to learn about PCTV is to take a tour.

Your personal tour will give you an inside view of PCTV. You'll learn about membership and all the benefits we offer. Schedule today!

Word of Mouth

The number one way people learn about PCTV is word of mouth. Why? Because the opportunity PCTV has to offer is so incredible, people have to share it. Spread the word!

Greater Pittsburgh CMA

The Greater Pittsburgh Community Media Awards is an annual event designed to celebrate community media in our region. Working with our partners Bethel Park Public Access, City Channel Pittsburgh, and Monroeville Municipal TV, in 2022 we presented the Sixth Annual edition of this beloved event. WTAE's Andrew Stockey hosted. Check it out [here](#).



Distribute & Watch

Where can I see PCTV?

PCTV is on your TV, your phone, and your computer. We're worldwide now so there's no excuse not to watch PCTV!

Members who produce programs get them distributed across our network of 10 different outlets.

Viewing Outlets

Pittsburgh Comcast 21
Pittsburgh Comcast 1070 (HD)
Pittsburgh Verizon 47
[Apple TV](#)
[ROKU](#)
[Fire TV](#)
iOS
[pctv21.org](#)
[Facebook](#)
[YouTube](#)

Facebook Live

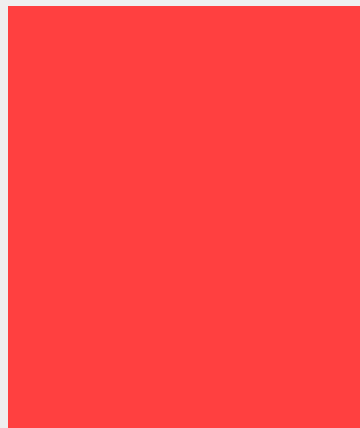
Many of our members take advantage of our ability to go on Facebook Live when using the studio, which allows you to build an instant, interactive audience.

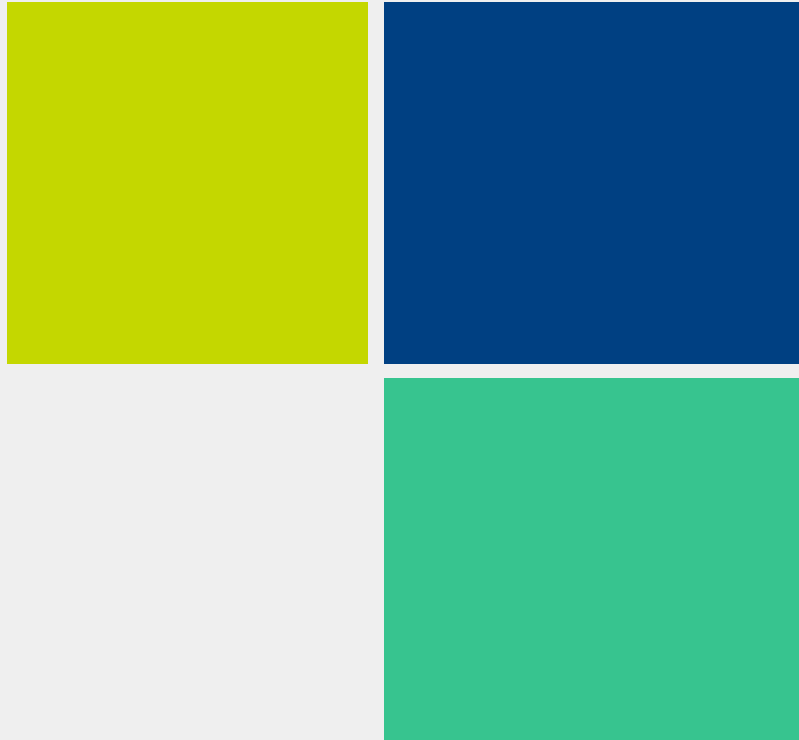
2022 Viewership Stats

In 55,000 homes on cable TV
25,037 on Facebook
8,163 on pctv21.org
578 on ROKU
62 on Apple TV
33,840 total online
2,820 monthly avg. streaming

How to Watch if you Don't Have Cable

Fret not all you cord cutters out there. If you don't have cable you can still watch us. Click [here](#) to go to our web stream and [here](#) to learn how to download the ROKU, Apple TV, Fire TV apps. Download our iOS app in the AppStore to watch on your iPhone or iPad.





The PCTV Network

We're worldwide! No kidding. With the addition of Apple TV, ROKU, FireTV, and iOS for iPhone and iPad, there really is no excuse not to watch PCTV. If all else fails, you can watch on our website at pctv21.org.



33,840 **55,000**

On-line

On Cable



Production Resources

What production resources does PCTV provide?

PCTV is a one stop shop for everything you need to create and distribute media. Here is a look at what we provided in 2022.

Studio Resources

PCTV's facility features two studios equipped for television production or podcasts. Both studios have 3 Canon XF 305 cameras, teleprompter and full HD lighting. You can also green screen your heart out in both studios.

Editing

PCTV's edit lab features 5 high powered computers loaded with Adobe Premiere and Adobe Creative Cloud.

Portable Gear

Canon XA 35 cameras
Tripods
Microphones
Insta360 video cameras

Studio Usage

By far our most popular resource are the studios we provide. In 2022, the studio was used 472 times for 1,416 hours. Heavy traffic!

Podcasting

There are two ways to do a podcast at PCTV. You can do it with staff assistance in one of our studios or you can do it yourself with our podcast gear. Includes laptop, USB microphones, boom arms, headphones, USB audio interface, Zoom recorder, shock mounts, and pop filters. Not only can you do a podcast, you can look professional doing it.



Production Services

What other ways can PCTV help me?

Maybe you're not a do it yourself kind of person. If so, we can help. We offer affordable production services for nonprofits and businesses. Here are some of our projects from 2022.

A+ Schools

A+ Schools is a longtime client of PCTV. In November 2022 they asked us to live stream a 3-camera production of an interview with Superintendent Wayne Walters. Piece of cake.

Healthy Village Learning Institute

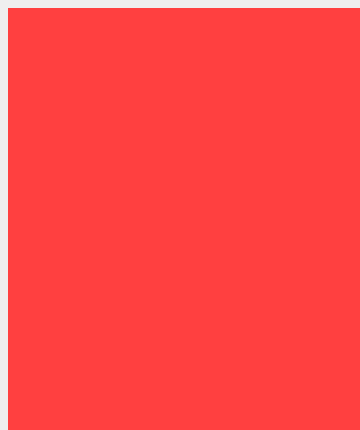
HVLI needed a video about their organization to help raise awareness as they seek to raise funds for a building addition. PCTV to the rescue. Check it out [here](#).

Local Government Academy

Because of the ongoing pandemic, the Academy needed a way to deliver their newly elected officials course to clients who couldn't make it in person. PCTV stepped in to record and edit all the sessions.

Foster Grandparent Program

The Foster Grandparent program needed a short public service announcement to educate the community about the opportunity for seniors to help kids in need while earning money at the same time. Watch the PSA we recorded in the studio [here](#).



Supporters

How can you help PCTV?

One way you can help is by donating to PCTV. Due to the drop in cable subscribers over the last several years, PCTV funding has dropped more than 40%. Your contribution can help close the gap. A big thank you to all the businesses and individuals who supported us in 2022.

Platinum (\$2,500 & Over)

The Wilson Group
Rivers Casino

Gold (\$1,000 - \$2,499)

Reed Smith
Afro-American Music Institute
Paul Green

Silver (\$500 - \$999)

Riverside Center for Innovation
McGee Maruca & Associates
Arlene Bates

Bronze (\$250 - \$499)

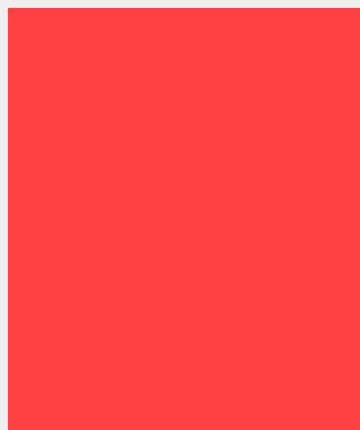
Ascent Systems
Bookminders
FiveStar (Lou Camerlengo)
Key Bank
Liberty Insurance Agency
Trinity Commercial Development
Telvue
Texolve
Paul Weisel
Kyle Higgins

Supporter (\$100 - \$249)

Larry Berger
Annette Werner
Charles Snowden
Diane Carroll
Pamela Johnson
Valerie Goodman
Shirley Hunter
Bettie Jamison
NEED Scholarship
Dirt Doctors (Tim Maloney)

Friend (up to \$99)

Sharon Jacobs
Alaina Gibbs
Susan Ferrey
Amy Kleissas
Lorraine Penn
Velma Vigil
Lamont Thomas
Edna Mims
Ray Lipowcan
Avril Skeete



Supporters (continued)

Here are the rest of our wonderful donors.

Friend (up to \$99)

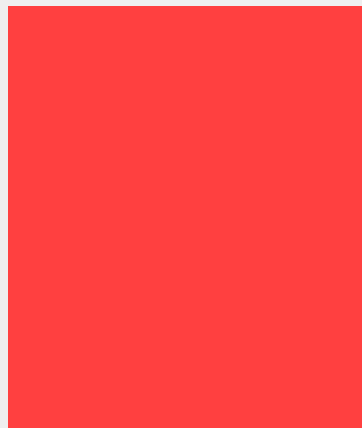
Roma Murphy
Valerie Waters
Enid M. Natkins
Angeler Lucas
Chelli Greenberg
Jane Butler
Susan Maloney
Betty Darkins
Jamara Meggett
Annie Mesina
Beverly Gordon
Signora Watson
Sylvia Robinson
Denine Hood
Brenda Gregg
Susan Brozek Scott
Helen Ortmann
Sue Buske
James Porco
Michael Freker
Victor Janflone
Hazel Carr Leroy
Jenny Ladd

How to Donate

Donating to PCTV is easy and convenient. And once you've done it, you'll feel good, knowing you've supported a worthy cause and organization. To donate on our website, click [here](#). If you'd prefer, you can also mail your contribution to PCTV, 1300 Western Avenue, Pgh, PA 15233. You can also donate by phone by calling us at 412-322-7570.

Why Donate

Many organizations are worthy of your support but PCTV is a unique entity doing work unlike anything else in Pittsburgh. We give voice to Pittsburgh's diverse communities through the media. Please help us continue our work with your contribution.



Financial Highlights

Where does the money come from?

PCTV operates under a contract with the City of Pittsburgh which is funded by the cable franchise agreements with Comcast and Verizon. Increasingly we have to raise funds from other sources as Pittsburgh city residents continue to cut the cord. Here are some financial highlights from 2022.

Total Revenue

Total Revenue \$404,668

All Revenue Sources

City Contract \$336,460
 Foundation Support \$7,500
 Production Services \$23,938
 Membership \$15,362
 Donations \$8,798
 Underwriting \$7,425
 Interest Income \$2,784
 Sale of Assets \$2,400
 Miscellaneous \$1

Non-Franchise Sources

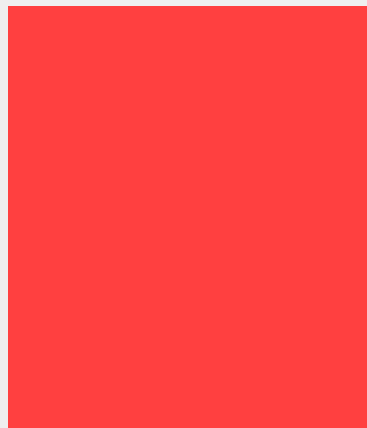
PCTV generated \$68,208 from sources other than the city contract, representing 16.8 % of revenue.

Construction Loan

PCTV borrowed money in 2015 to renovate its facility. In 2022, we paid off \$26,766.32 of the balance, bringing the total remaining liability down to \$125,793.

Financial Responsibility

PCTV is required to be audited annually by an independent accountant. We are happy to report that we have once again received an unmodified opinion from our auditor. In plain English, that's good! Our audited financial statement is included at the end of this report.



Board and Staff

Who runs this place anyway?

Without a great board and staff, it just wouldn't happen.

Thankfully, we have a great team with loads of experience. You can contact any member of the board or staff by writing to: Pittsburgh Community Television, 1300 Western Avenue, Pittsburgh, PA 15233. Or call us at 412-322-7570.

Board of Directors

Amber Farr, President
Executive Director
Grantmakers of Western PA

Kyle Higgins, Secretary
Attorney
Reed Smith

Michael Freker
Director of Planned Giving
Catholic Diocese of Pgh

Landis Irwin
Director of Development
Crossroads Foundation

Staff

John H. Patterson
Executive Director

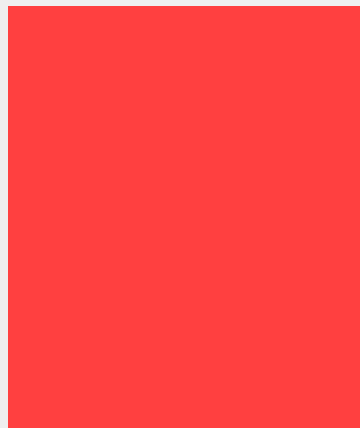
Gladys Jelks
Director of Operations & Programming

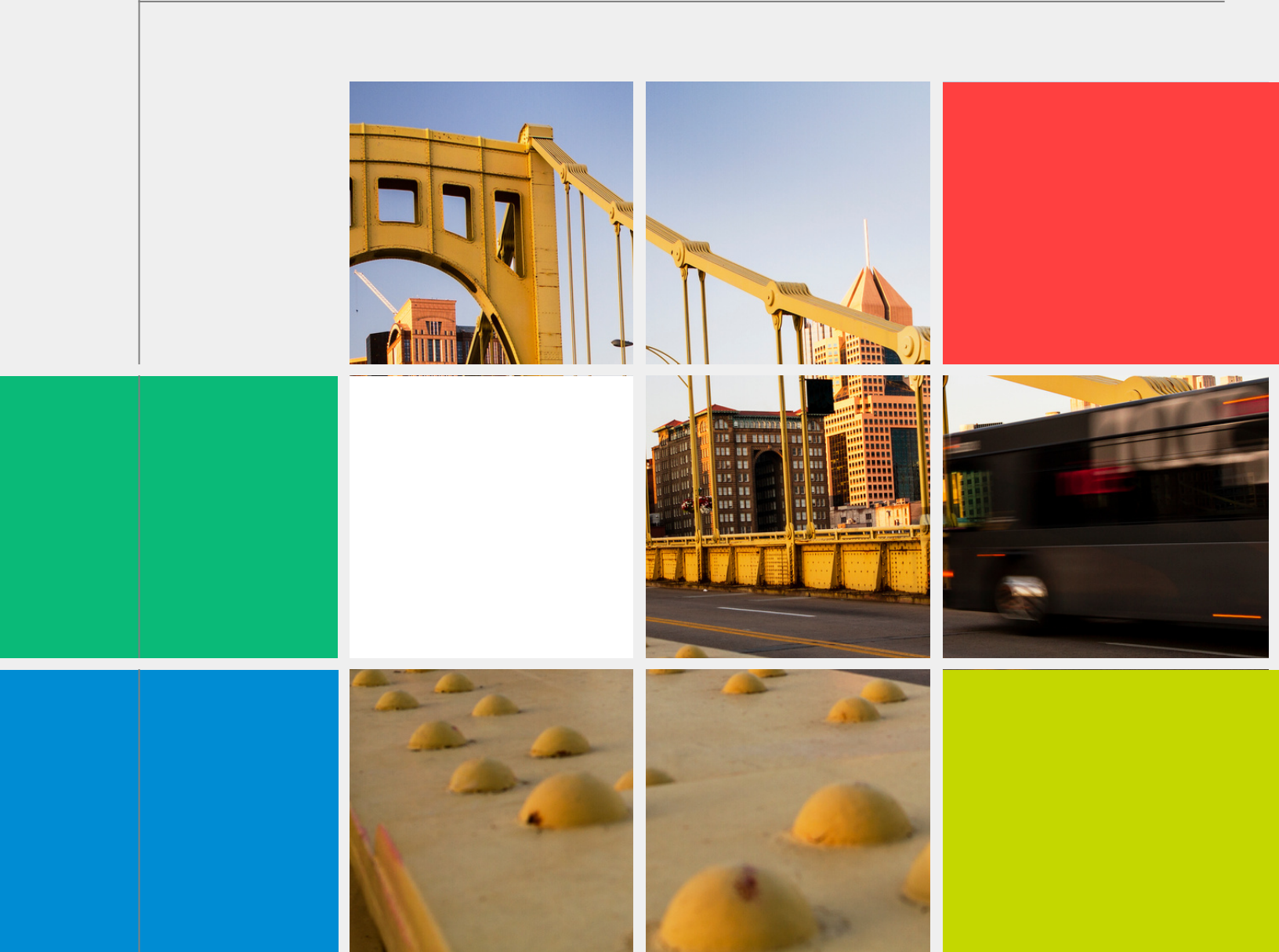
Carl Cimini
Director of Communications & Engagement

Doug Drew
Production Manager

Tony Cherby
Production Technician


Kris Veenis
Video Instructor






Thank You!

PCTV has served the community since 1986. That's 37 years! No organization can stay around that long without the support of a lot of people. Thank you to everyone past and present who has helped make PCTV what it is today.

 412-322-7570

 1300 Western Avenue Pittsburgh, PA 15233

 www.pctv21.org

PITTSBURGH COMMUNITY TELEVISION CORPORATION

Financial Statements

December 31, 2022

PITTSBURGH COMMUNITY TELEVISION CORPORATION

Table of Contents

December 31, 2022

	<u>Pages</u>
Independent Auditor's Report	1 - 3
Statement of Financial Position	4
Statement of Activities	5
Statement of Functional Expenses	6- 7
Statement of Cash Flows	8
Notes to the Financial Statements	9 - 18



Independent Auditor's Report

McGee Maruca & Associates, P.C.

Certified Public Accountants
3111 Banksville Road, Suite 200
Pittsburgh, PA 15216
Ph 412.344.9006
Fax 412.344.9475
Email: office@mcgeemaruca.com
Website: mcgeemaruca.com

Leslie A. McGee, C.P.A.
Lisa Maruca DiPardo, C.P.A.

To the Board of Directors
Pittsburgh Community Television Corporation
Pittsburgh, Pennsylvania

Opinion

We have audited the accompanying financial statements of Pittsburgh Community Television Corporation (a nonprofit organization), which comprise the statement of financial position as of December 31, 2022, and the related statements of activities, functional expenses and cash flows for the year then ended, and the related notes to the financial statements.

In our opinion, the financial statements referred to above present fairly, in all material respects, the financial position of Pittsburgh Community Television Corporation as of December 31, 2022, and the changes in its net assets and its cash flows for the year then ended in accordance with accounting principles generally accepted in the United States of America.

Basis for Opinion

We conducted our audit in accordance with auditing standards generally accepted in the United States of America. Our responsibilities under those standards are further described in the Auditor's Responsibilities for the Audit of the Financial Statements section of our report. We are required to be independent of Pittsburgh Community Television Corporation and to meet our other ethical responsibilities in accordance with the relevant ethical requirements relating to our audit. We believe that the audit evidence we have obtained is sufficient and appropriate to provide a basis for our audit opinion.

Responsibilities of Management for the Financial Statements

Management is responsible for the preparation and fair presentation of the financial statements in accordance with accounting principles generally accepted in the United States of America, and for the design, implementation, and maintenance of internal control relevant to the preparation and fair presentation of financial statements that are free from material misstatement, whether due to fraud or error.

In preparing the financial statements, management is required to evaluate whether there are conditions or events, considered in the aggregate, that raise substantial doubt about Pittsburgh Community Television's ability to continue as a going concern within one year after the date that the financial statements are available to be issued.

Auditor's Responsibilities for the Audit of the Financial Statements

Our objectives are to obtain reasonable assurance about whether the financial statements as a whole are free from material misstatement, whether due to fraud or error, and to issue an auditor's report that includes our opinion. Reasonable assurance is a high level of assurance but is not absolute assurance and therefore is not a guarantee that an audit conducted in accordance with generally accepted auditing standards will always detect a material misstatement when it exists. The risk of not detecting a material misstatement resulting from fraud is higher than for one resulting from error, as fraud may involve collusion, forgery, intentional omissions, misrepresentations, or the override of internal control. Misstatements, including omissions, are considered material if there is a substantial likelihood that, individually or in the aggregate, they would influence the judgment made by a reasonable user based on the financial statements.

In performing an audit in accordance with generally accepted auditing standards, we:

- Exercise professional judgment and maintain professional skepticism throughout the audit.
- Identify and assess the risks of material misstatement of the financial statements, whether due to fraud or error, and design and perform audit procedures responsive to those risks. Such procedures include examining, on a test basis, evidence regarding the amounts and disclosures in the financial statements.
- Obtain an understanding of internal control relevant to the audit in order to design audit procedures that are appropriate in the circumstances, but not for the purpose of expressing an opinion on the effectiveness of Pittsburgh Community Television Corporation's internal control. Accordingly, no such opinion is expressed.
- Evaluate the appropriateness of accounting policies used and the reasonableness of significant accounting estimates made by management, as well as evaluate the overall presentation of the financial statements.
- Conclude whether, in our judgment, there are conditions or events, considered in the aggregate, that raise substantial doubt about Pittsburgh Community Television's ability to continue as a going concern for a reasonable period of time.

We are required to communicate with those charged with governance regarding, among other matters, the planned scope and timing of the audit, significant audit findings, and certain internal control related matters that we identified during the audit.

Report on Summarized Comparative Information

We have previously audited Pittsburgh Community Television Corporation's 2021 financial statements, and we expressed an unmodified audit opinion on those audited financial statements in our report dated June 21, 2022. In our opinion, the summarized comparative information presented herein as of and for the year ended December 31, 2021, is consistent, in all material respects, with the audited financial statements from which it has been derived.

McLee Morice & Associates, P.C.

Pittsburgh, Pennsylvania

May 11, 2023

Pittsburgh Community Television Corporation
Statement of Financial Position
For the Year Ended December 31

	<u>Assets</u>	
	<u>2022</u>	<u>2021</u>
Current assets:		
Cash and cash equivalents	\$ 350,266	\$ 498,662
Accounts receivable	354,710	407,707
Prepaid expense	12,657	18,314
Total current assets	<u>717,633</u>	<u>924,683</u>
Property and equipment:		
Furniture and equipment	586,820	592,041
Leasehold improvements	430,325	427,606
Total property & equipment	1,017,145	1,019,647
Less: accumulated depreciation	<u>(890,742)</u>	<u>(838,664)</u>
Net property and equipment	<u>126,403</u>	<u>180,983</u>
Other assets:		
Needs assessment (net amortization)	29,617	34,020
Right of use asset	27,472	-
Total intangible assets	<u>57,089</u>	<u>34,020</u>
Total assets	<u>\$ 901,125</u>	<u>\$ 1,139,686</u>
 <u>Liabilities and Net Assets</u> 		
Current liabilities:		
Accounts payable	\$ 4,020	\$ 1,472
Accrued liabilities	3,620	3,979
Current maturity of long-term debt	125,793	24,545
Payroll liability	10,866	12,018
Operating lease liability	27,670	-
Total current liabilities	171,969	42,014
Long-term debt, less current maturities	<u>-</u>	<u>128,014</u>
Total liabilities	<u>171,969</u>	<u>170,028</u>
Net assets:		
Without donor restrictions	724,747	960,658
With donor restrictions	4,409	9,000
Total net assets	<u>729,156</u>	<u>969,658</u>
Total liabilities and net assets	<u>\$ 901,125</u>	<u>\$ 1,139,686</u>

See accompanying notes to the financial statements.

Pittsburgh Community Television Corporation
Statement of Activities
For the Year Ended December 31, 2022
With Comparative Totals for the Year Ended December 31, 2021

<u>Operating Activities</u>	<u>Without Donor Restrictions</u>	<u>With Donor Restrictions</u>	<u>2022 Total</u>	<u>2021 Total</u>
Revenue and support:				
Grant revenue	\$ 343,960	\$ -	\$ 343,960	\$ 410,707
Contributions	16,223	-	16,223	9,895
PPP loan forgiveness	-	-	-	85,779
Project revenue	23,938	-	23,938	39,357
Producer enrollment fees	15,362	-	15,362	12,541
Miscellaneous income	1	-	1	-
Interest income	2,784	-	2,784	2,064
Gain on sale of assets	2,400	-	2,400	-
Net assets released from restrictions:				
Restrictions satisfied by payments	4,591	(4,591)	-	-
 Total revenue and other support	 409,259	 (4,591)	 404,668	 560,343
 Expenses:				
Program services	494,577	-	494,577	525,803
Supporting services:				
Management and general	123,205	-	123,205	135,930
Fundraising	27,388	-	27,388	15,118
 Total expenses	 645,170	 -	 645,170	 676,851
 Change in net assets	 (235,911)	 (4,591)	 (240,502)	 (116,508)
 Net assets at beginning of year	 960,658	 9,000	 969,658	 1,086,166
 Net assets at end of year	 \$ 724,747	 \$ 4,409	 \$ 729,156	 \$ 969,658

See accompanying notes to the financial statements.

Pittsburgh Community Television Corporation
Statement of Functional Expenses
For the Year Ended December 31, 2022
With Comparative Totals for the Year Ended December 31, 2021

	<u>Production</u>	<u>Programming</u>	<u>Outreach</u>	<u>Public Access</u>	<u>Total Program Services</u>
Salaries	\$ 21,407	\$ 61,775	\$ 82,509	\$ 83,810	\$ 249,501
Employee benefits	251	1,269	1,930	1,694	5,144
Payroll taxes	1,659	4,782	6,384	6,867	19,692
Advertising and promotion	-	-	-	-	-
Bad debt expense	500	-	-	-	500
Bank fees	-	-	-	-	-
Contract labor	-	-	-	-	-
Dues and subscriptions	-	54	-	-	54
Equipment lease	1,646	1,646	2	1,696	4,990
Fundraising expenses	-	-	-	-	-
Insurance	6,829	14,612	18,603	19,071	59,115
Interest expense	-	-	-	-	-
Occupancy	22,085	22,085	-	22,671	66,841
Outside consultants	1,969	1,969	1,969	1,968	7,875
Postage	216	215	216	216	863
Production expenses	301	-	-	-	301
Repairs and maintenance	6,243	6,243	-	6,322	18,808
Small equipment	1,200	1,201	-	1,201	3,602
Supplies	-	-	-	-	-
Telephone and internet	1,545	1,545	1,076	1,545	5,711
Training	-	-	-	-	-
Travel	-	-	-	-	-
Depreciation & amortization	12,895	12,895	12,895	12,895	51,580
Totals	<u>\$ 78,746</u>	<u>\$ 130,291</u>	<u>\$ 125,584</u>	<u>\$ 159,956</u>	<u>\$ 494,577</u>

See accompanying notes to the financial statements.

<u>General and Administrative</u>	<u>Fundraising</u>	<u>2022 Total</u>	<u>2021 Total</u>
\$ 41,941	\$ 13,398	\$ 304,840	\$ 318,997
791	181	6,116	6,293
3,271	682	23,645	24,340
3,462	-	3,462	1,825
-	-	500	-
635	11	646	412
5,408	7,500	12,908	4,335
5,065	-	5,119	6,018
2	1	4,993	4,020
-	2,284	2,284	1,099
10,118	2,376	71,609	89,891
7,473	-	7,473	9,359
1,577	-	68,418	66,632
24,051	492	32,418	32,533
1,161	194	2,218	1,456
-	-	301	1,036
2,072	-	20,880	15,997
686	-	4,288	3,150
180	-	180	654
1,075	269	7,055	7,079
1,022	-	1,022	674
320	-	320	1,531
12,895	-	64,475	79,520
<u>\$ 123,205</u>	<u>\$ 27,388</u>	<u>645,170</u>	<u>676,851</u>

Pittsburgh Community Television Corporation
Statement of Cash Flows
For the Year Ended December 31

	<u>2022</u>	<u>2021</u>
Cash flows from operating activities:		
Change in net assets	\$ (240,502)	\$ (116,508)
Adjustments to reconcile change in net assets to net cash provided (used) by operating activities:		
Depreciation & amortization	64,477	79,520
Gain on sale of fixed assets	(2,400)	-
Forgiveness of debt	-	(85,779)
Decrease in accounts receivable	52,997	126,773
Decrease in prepaid expenses	5,657	401
Increase in accounts payable	2,548	698
(Decrease) in payroll liability	(1,152)	(3,717)
(Decrease) increase in other liabilities	(359)	3,979
Net cash provided (used) by operating activities	<u>(118,734)</u>	<u>5,367</u>
Cash flows from investing activities:		
Proceeds on sale of fixed assets	2,400	-
Purchase of fixed assets	(5,296)	(4,410)
Net cash used by investing activities	<u>(2,896)</u>	<u>(4,410)</u>
Cash flows from financing activities:		
Proceeds from PPP Loan	-	85,779
Payments on long term debt	(26,766)	(25,381)
Net cash provided (used) by financing activities	<u>(26,766)</u>	<u>60,398</u>
Net increase (decrease) in cash and cash equivalents	(148,396)	61,355
Cash and cash equivalents at beginning of year	<u>498,662</u>	<u>437,307</u>
Cash and cash equivalents at end of year	<u>\$ 350,266</u>	<u>\$ 498,662</u>
Supplemental information:		
Cash paid for interest expense	<u>\$ 7,473</u>	<u>\$ 9,359</u>

See accompanying notes to the financial statements.

PITTSBURGH COMMUNITY TELEVISION CORPORATION

Notes to the Financial Statements

December 31, 2022

(1) **Organization**

The Pittsburgh Community Television Corporation (Corporation) (PCTV) is a not-for-profit corporation whose objective is to serve the people of Pittsburgh by providing public access on an equal opportunity basis to city residents. The Corporation provides training, equipment, and production services to the community for cable access, and actively advocates for public access and first amendment rights. PCTV strives to be a telecommunications resource that is educational and accessible for community producers, engaging, and diverse for viewers.

PCTV was incorporated as a Pennsylvania non-profit corporation on June 27, 1985. It received IRC §501(c)(3) designation in December of 1985. Consequently, contributions to PCTV are tax deductible within limitations prescribed by the Internal Revenue Code.

(2) **Summary of Significant Accounting Policies**

(a) **Basis of Presentation**

The financial statements of the Corporation have been prepared in accordance with accounting principles generally accepted in the United States of America, which requires the Pittsburgh Community Television Corporation to report information regarding its financial position and activities according to the following net asset classifications:

Net assets without donor restrictions: Net assets that are not subject to donor-imposed restrictions and may be expended for any purpose in performing the primary objectives of the Corporation. These net assets may be used at the discretion of the Organization's management and the board of directors.

Net assets with donor restrictions: Net assets subject to stipulations imposed by donors and grantors. Some donor restrictions are temporary in nature; those restrictions will be met by actions of The Pittsburgh Community Television Corporation or by the passage of time. Other donor restrictions are perpetual in nature, where by the donor has stipulated the funds be maintained in perpetuity.

Donor restricted contributions are reported as increases in net assets with donor restrictions. When a restriction expires, net assets are reclassified from net assets with donor restrictions to net assets without donor restrictions in the statement of activities.

PITTSBURGH COMMUNITY TELEVISION CORPORATION

Notes to the Financial Statements, continued

December 31, 2022

(2) **Summary of Significant Accounting Policies, continued**

(b) **Measure of Operations**

The statement of activities reports all changes in net assets, including changes in net assets from operating and non-operating activities. Operating activities consist of those items attributable the Corporation's ongoing program services. Non-operating activities are limited to resources that generate return from investments and other activities considered to be of more unusual or nonrecurring nature.

(c) **Property and Equipment**

Property and equipment are recorded at cost or at estimated fair value at date of gift, if donated. The Corporation typically capitalizes items with an individual cost greater than \$500. Depreciation is provided over the estimated useful lives of property and equipment, which range from three to thirty years, using the straight-line method. The Corporation assesses for impairment losses when conditions warrant.

(d) **Tax Status**

The Internal Revenue Service has determined that the Corporation is tax exempt under Section 501(c) (3) of the Internal Revenue Code. The Corporation is not classified as a private foundation.

The Financial Accounting Standards Board (FASB) has issued Interpretation FASB ASC No. 740, which clarifies accounting principles generally accepted in the United States of America for recognition, measurement, presentation and disclosure relating to uncertain tax positions. FASB ASC No. 740 applies to business enterprises, not-for-profit entities, and pass-through entities, such as S corporations and limited liability companies. The Corporation evaluates uncertain tax positions in accordance with FASB ASC No. 740 and has determined there is no material impact on the Corporation's financial position or results of operations for the year ended December 31, 2022.

The Corporation annually files a federal Exempt Organization Tax Return (Form 990) as applicable. The filed form is subject to examination by the Internal Revenue Service generally for three years after it is filed.

(e) **Estimates**

The preparation of financial statements in conformity with generally accepted accounting principles requires management to make estimates and assumptions that affect certain reported amounts and disclosures. Accordingly, actual results could differ from those estimates.

PITTSBURGH COMMUNITY TELEVISION CORPORATION

Notes to the Financial Statements, continued

December 31, 2022

(2) **Summary of Significant Accounting Policies, continued**

(f) **Contributions**

Contributions received are recorded as net assets without donor restrictions or net assets with donor restrictions, depending on the existence and/or nature of any donor-imposed restrictions. All donor restricted contributions are reported as an increase in net assets with donor restrictions, depending on the nature of the restriction. When a restriction expires (that is, when a stipulated time restriction ends or purpose restriction is accomplished), net assets with donor restrictions are reclassified to net assets without donor restrictions and reported in the statements of activities as net assets released from restrictions.

Contributed property and equipment are recorded at fair value at the date of donation. Contributions with donor-imposed stipulations regarding how long the contributed assets must be used are recorded as net assets with donor restrictions; otherwise, the contributions are recorded as net assets without donor restrictions.

(g) **Cash Equivalents**

Pittsburgh Community Television Corporation's cash consists of cash on deposit with banks. Cash equivalents are equal to all certificates of deposit purchased with a maturity of ninety days or less.

(h) **Fair Value**

The Financial Accounting Standards Board (FASB) has issued FASB ASC No. 820, "Fair Value Measurements", which defines fair value, establishes guidelines for measuring fair value and expands disclosures regarding fair value measurements. This pronouncement does not require any new fair value measurements, but rather eliminates inconsistencies in guidance found in various prior accounting pronouncements. The carrying amount of the Corporation's cash and cash equivalents, accounts receivable, prepaid expenses and accounts payable approximates fair value primarily because of the short maturity of these instruments.

The Board of Directors reviews and approves the Corporation's fair value measurements policies and procedures annually. At least annually, the audit committee and the Board determine if the valuation techniques used in fair value measurements are still appropriate.

PITTSBURGH COMMUNITY TELEVISION CORPORATION

Notes to the Financial Statements, continued

December 31, 2022

(2) **Summary of Significant Accounting Policies, continued**

(i) **Concentrations of Risk**

The Corporation maintains its cash balances in two financial institutions located in Pittsburgh, Pennsylvania. The accounts are insured by the Federal Deposit Insurance Corporation up to \$250,000 at each institution. At December 31, 2022, PCTV had \$44,454 in uninsured cash balances.

(j) **Advertising**

PCTV uses advertising to promote its programs and services. Advertising and promotional costs are expensed as incurred. For the year ended December 31, 2022 advertising expense was \$3,462.

(k) **Functional Allocation of Expenses**

The costs of providing program and other activities have been summarized on a functional basis in the statement of functional expenses. Accordingly, certain costs have been allocated among program services and supporting services benefited. Such allocations are determined by management on an equitable basis based on staff time and effort.

(l) **New Accounting Standards**

In February 2016, the FASB issued ASU 2016-02, Leases (Topic 842), which supersedes existing guidance for accounting for leases under Topic 840, Leases. The FASB also subsequently issued the following additional ASUs, which amend and clarify Topic 842: ASU 2018-01, Land Easement Practical Expedient for Transition to Topic 842; ASU 2018-10, Codification Improvements to Topic 842, Leases; ASU 2018-11, Leases (Topic 842): Targeted Improvements; ASU 2018-20, Narrow-scope Improvements for Lessors; and ASU 2019-01, Leases (Topic 842): Codification Improvements; ASU 2020-05, Leases (Topic 842): Lessors—Certain Leases with Variable Lease Payments; and ASU 2021-09, Leases (Topic 842): Discount Rate for Lessees That Are Not Public Business Entities. The most significant change in the new leasing guidance is the requirement to recognize right-to-use (ROU) assets and lease liabilities for operating leases on the statement of financial position.

PITTSBURGH COMMUNITY TELEVISION CORPORATION

Notes to the Financial Statements, continued

December 31, 2022

(2) **Summary of Significant Accounting Policies, continued**

(1) **New Accounting Standards, continued**

The Organization elected to adopt these ASUs effective January 1, 2022 and utilized all of the available practical expedients. The adoption had a material impact on the Organization's statement of financial position but did not have a material impact on the statement of activities. The most significant impact was the recognition of ROU assets and lease liabilities for operating leases. Adoption of the standard required the Organization to restate amounts as of January 1, 2022, resulting in an increase in operating lease ROU assets of \$70,219, an increase in operating lease liabilities of \$70,219. Adoption of the new standard did not materially impact the Organization's change in net assets and had no impact on cash flows.

The following details the Statement of Financial Position line items effected as of January 1, 2022:

	<u>As Report</u> <u>Under 840</u>	<u>As Reported</u> <u>Under 842</u>
Cash and cash equivalents	\$ 498,662	\$ 498,662
Accounts receivable	407,707	407,707
Prepaid expenses	18,314	18,314
Net intangible asset	34,020	34,020
Net property and equipment	180,983	180,983
Operating lease asset	<u>0</u>	<u>70,219</u>
Total assets	<u>\$1,139,686</u>	<u>\$1,209,905</u>
Accounts payable	\$ 1,472	\$ 1,472
Accrued expenses	15,997	15,997
Operating lease liabilities	0	70,219
Long term debt	<u>152,559</u>	<u>152,559</u>
Total liabilities	<u>170,028</u>	<u>240,247</u>
Without donor restrictions	960,658	960,658
With donor restrictions	<u>9,000</u>	<u>9,000</u>
Total net assets	<u>969,658</u>	<u>969,658</u>
Total liabilities and net assets	<u>\$1,139,686</u>	<u>\$1,209,905</u>

PITTSBURGH COMMUNITY TELEVISION CORPORATION

Notes to the Financial Statements, continued

December 31, 2022

(3) **Property and Equipment**

Equipment at December 31, 2022 is comprised of the following:

Furniture and equipment	\$ 586,820
Leasehold improvements	<u>430,325</u>
	1,017,145
Less accumulated depreciation	<u>(890,742)</u>
	\$ <u>126,403</u>

(4) **Long-Term Debt**

A note payable of \$152,559 to Slovak Savings Bank with interest of 5.25% charged on the outstanding balance. Payments of \$2,853 include principal and interest through December 2022, with a final balloon payment of \$125,792 in January 2023. This loan is collateralized by the Corporation's business assets. The required principal payments are:

Years ending December 31:	
2023	<u>125,792</u>
	\$ <u>125,792</u>

(5) **Accounts Receivable**

Accounts receivable are recorded at the amounts originally billed, less payments received and are non-interest bearing. The potential risk is limited to the amount recorded in the financial statements. The allowance for doubtful accounts is based upon historical collections and the amount of past due receivables for accounts whose collectability is in doubt. Management believes that no allowance is needed at December 31, 2022. Balances are written off once management determines collectability is not possible.

(6) **Net Assets**

Net Assets with Donor Restrictions

Net assets with donor restrictions as of December 31, 2022 consist of the following:

Youth media education	<u>\$4,409</u>
-----------------------	----------------

Net Assets without Donor Restrictions

Net assets without donor restrictions for the year ended December 31, 2022 are as follows:

Undesignated	<u>\$724,747</u>
Total	<u>\$724,747</u>

PITTSBURGH COMMUNITY TELEVISION CORPORATION

Notes to the Financial Statements, continued

December 31, 2022

(7) **Leases**

The Corporation is currently engaged in a lease agreement with Cedarwood Commercial Properties, LLC for office space located at 1300 Western Avenue, Pittsburgh, Pennsylvania. The lease ends on June 30, 2023

The following summarizes the line items in the Statement of Financial Position, which include amounts for operating leases as of December 31, 2022:

Operating Leases:

Operating lease right-of-use-assets	<u>\$27,472</u>
Operating lease liabilities - current	\$27,670
Operating lease liabilities - non current	<u>0</u>
Total operating lease liabilities	<u>\$27,670</u>

The following summarizes the weighted average remaining lease term and discount rate as of December 31, 2022:

Weighted Average Remaining Lease Term

Operating leases	6 months
------------------	----------

Weighted Average Discount Rate

Operating leases	5%
------------------	----

The maturities of lease liabilities as of December 31, 2022 were as follows:

Year ending December 31:	<u>Operating</u>
2023	\$28,322
Thereafter	<u>0</u>
Total lease payments	28,322
Less: interest	<u>(652)</u>
Present value of lease liabilities	<u>\$27,670</u>

The following summarizes the line items in the Statement of Functional Expenses, which include the components of lease expense for the year ended December 31, 2022:

Operating lease expense included under occupancy	<u>\$53,678</u>
--	-----------------

PITTSBURGH COMMUNITY TELEVISION CORPORATION

Notes to the Financial Statements, continued

December 31, 2022

(7) **Leases, continued**

The following summarizes cash flow information related to leases for the year ended December 31, 2022:

Cash paid for amounts included in the measurement of lease liabilities:

Operating cash flows from operating leases	<u>\$53,477</u>
--	-----------------

(8) **Contributions Receivable**

Unconditional contributions are recognized when pledged and recorded as net assets without donor restrictions or net assets with donor restrictions, depending on the existence and/or nature of any donor-imposed restrictions. Conditional promises to give are recognized when the conditions on which they depend are substantially met. Gifts of cash and other assets are reported with donor restricted support if they are received with donor stipulations that limit the use of the donated assets.

When a restriction expires, that is, when a stipulated time restriction ends or a purpose restriction is accomplished, net assets with donor restrictions are reclassified to net assets without donor restrictions and reported in the statement of activities as net assets released from restrictions. Donations of property and equipment are recorded as support at their estimated fair value at the date of donation. Contributions restricted for the acquisition of land, buildings, and equipment are reported as net assets without donor restrictions upon acquisition of the assets and the assets are placed in service.

There are no unconditional or conditional promises to give at year end December 31, 2022.

(9) **Donated Services and Goods**

Individuals have donated their time and services to the Organization. In instances where an objective basis for valuing the services or goods contributed exists, the value is reflected in the financial statements as support and a related expense in the period the services are used. Services or goods for which it is impractical to estimate a fair market value are not reflected in the accompanying financial statements. Donated services and goods are recorded as contributions at their estimated fair value at the date of receipt. The donated goods are used to maintain the Organization's program activities. There were no donated goods for the year ended December 31, 2022.

PITTSBURGH COMMUNITY TELEVISION CORPORATION

Notes to the Financial Statements, continued

December 31, 2022

(10) **Donated Assets**

Donated marketable securities and other noncash donations are recorded as contributions at their estimated fair value at the date of donation. There were no donated assets for the year ended December 31, 2022.

(11) **Line of Credit**

The Corporation has a line of credit with Slovak Savings Bank. The total amount available is \$150,000. Annual interest of prime plus 1% (8.750% at December 31, 2022) is charged on the outstanding balance. There was no outstanding balance as of December 31, 2022.

(12) **Needs Assessment**

In 2019, the Corporation completed a Cable TV and Community Needs Assessment Study prepared by the Buske Group, a media consultant. This study is required by federal law and is used as part of the City of Pittsburgh's franchise agreement with Comcast and Verizon. PCTV uses this study to identify local community needs and interests related to public access which will guide their capital investments and operational strategies for the next ten years, directly tying to a contract with the City of Pittsburgh. The cost of the needs assessment was \$44,031 at December 31, 2022, with all additions being capitalized with an estimated useful life of 10 years. Amortization as of December 31, 2022 was \$14,414.

(13) **Liquidity**

The following represents The Corporation's financial assets at December 31, 2022:

Financial assets at year-end:	
Cash and cash equivalents	\$350,266
Accounts receivable	<u>354,710</u>
Total financial assets	<u>704,976</u>
Less amounts not available for general	
Expenditures within one year:	
Net assets with donor or time restrictions	<u>4,409</u>
Financial assets available to meet general expenditures	
over the next twelve months	<u>\$700,567</u>

The Corporation's goal currently is to have two months of reserves to cover ongoing operating expenses. Reserves in excess of this are invested in short-term investments such as money market accounts.

PITTSBURGH COMMUNITY TELEVISION CORPORATION

Notes to the Financial Statements, continued

December 31, 2022

(14) **Retirement Plan**

The Organization has adopted a qualified 403(b) savings-retirement plan for the benefit of eligible employees. The plan allows employee contributions up to the annual elected deferral limits imposed by the IRS.

The Organization matches the first 3% deferral fully. Employer contributions to the plan amounted to \$6,116 for the year ended December 31, 2022.

(15) **Compensated Absences**

The Organization's vacation policy is to not allow for carryover of unused vacation after December 31.

(16) **Subsequent Events**

Subsequent events were evaluated through the Independent Auditor's Report date, which is the date the financial statements were available to be issued. No subsequent events were noted, except that the note payable discussed in Footnote 4 was refinanced to a new 36-month term effective January 2023.

Pittsburgh Community Television
Report on New and Enhanced Revenue Sources
2022

PCTV generated \$68,208 in non-franchise revenue in 2022. The sources of revenue we are reporting on in this report include:

- 1) **4020 Foundation Grants**-- grant income received from foundation services.
- 2) **4030 Special Project Income** – income derived from PCTV hiring out its television production services.
- 3) **4035 Producer Enrollment Fees** – enrollment fees from individuals and non-profits who are community producers at PCTV.
- 4) **4040 Production Services** – income derived from additional services including DVD and tape duplication and rental of duplication equipment
- 5) **4050 Donations**—donations from individual donors.
- 6) **4055 Underwriting/Sponsorship Income** – contributions from businesses and non-profits in exchange for recognition as an underwriter or sponsor on PCTV.
- 7) **4070 Miscellaneous Income** – miscellaneous income that does not easily fit into another category.
- 8) **4900 Interest Income**—income from interest bearing bank accounts.
- 9) **4910 Gain on Sale of Assets** – income from sale of obsolete assets.

Line Item	
4020 Foundation Grants	\$7,500
4030 Special Projects	\$20,325
4035 Producer Enrollment	\$15,362
4040 Production Services	\$3,613
4050 Donations	\$8,798
4055 Underwriting	\$7,425
4070 Miscellaneous	\$1
4900 Interest Income	\$2,784
4910 Gain Sale of Assets	\$2,400
Total	\$68,208

The \$68,208 in non-franchise revenue represents 16.8% of total revenue. For more details on PCTV's revenue, please review the annual report and audited financial statements.

Pittsburgh Community Television Current Equipment Inventory May 2023

Tag Number	Type	Manufacturer	Model	Description	PurchaseDate	Purchase Cost
00001	Audio	Mackie		Mackie 1604-VLZ Pro 16 Channel Mixer	-	1000
00002	Audio	Sony		Sony MDR-Zx100 Headphones	2012-09-12	90
00003	Audio	Sony		Sony MDR-Zx100 Headphones	2012-09-12	90
00004	Audio	Sony		Sony MDR-Zx100 Headphones	2012-09-12	90
00005	Audio	Unknown		TD-900 Wireless Icom w/ Headset	-	500
00006	Audio	Unknown		TD-900 Wireless Icom w/ Headset	-	500
00007	Audio	Unknown		TD-900 Wireless Icom w/ Headset	-	500
00008	Audio	Unknown		TD-900 Wireless Icom w/ Headset	-	500
00009	Battery	Canon		Canon BP 970G Battery Pack	2011-08-01	150
00010	Battery	Canon		Canon BP 970G Battery Pack	2011-08-01	150
00011	Battery	Canon		Canon BP 970G Battery Pack	2011-08-01	150
00012	Battery	Canon		Canon BP 970G Battery Pack	2011-08-01	150
00013	Battery	Canon		Canon BP 970G Battery Pack	2011-08-01	150
00014	Battery	Canon		Canon BP 970G Battery Pack	2011-08-01	150
00015	Battery	Canon		Canon BP 970G Battery Pack	2011-08-01	150
00016	Battery	Canon		Canon BP 970G Battery Pack	2011-08-01	150
00017	Battery	Canon		Canon BP 970G Battery Pack	2011-08-01	150
00018	Battery	Canon		Canon BP 970G Battery Pack	2011-08-01	150
00019	Battery	Canon		Canon BP 970G Battery Pack	2011-08-01	150
00020	Battery	Canon		Canon BP 970G Battery Pack	2011-08-01	150
00021	Battery	Canon		Canon BP 955 Battery Pack	-	-
00022	Battery	Canon		Canon BP 955 Battery Pack	-	-
00023	Battery	Canon		Canon BP 955 Battery Pack	-	-
00024	Battery	Canon		Canon Battery Charger	-	-
00025	Battery	Canon		Canon Battery Charger	-	-
00026	Battery	Canon		Canon Battery Charger	-	-
00027	Battery	Dolgin		Dolgin Turbo Charger	2012-10-02	495
00028	Battery	Green Extreme	GXCHPPB800	GX BAT Plate F/Canon BP-800	-	-
00029	Battery	Green Extreme	GXCHPB800	GX BAT Plate F/Canon BP-800	-	-
00030	Battery	Green Extreme	GXCHPB800	GX BAT Plate F/Canon BP-800	-	-
00031	Battery	Green Extreme	GXCHPB800	GX BAT Plate F/Canon BP-800	-	-
00032	Battery	Green Extreme	GXCHPB800	GX BAT Plate F/Canon BP-800	-	-
00033	Battery	Green Extreme	GXCHPB800	GX BAT Plate F/Canon BP-800	-	-
00034	Battery	Kapaxen	BP-BP828-K-CN	Kapaxen Battery for BP-282	-	-
00035	Battery	Kapaxen	BP-BP828-K-CN	Kapaxen Battery for BP-282	-	-

00036	Battery	Kapaxen	BP-BP828-K-CN	Kapaxen Battery for BP-282	-	-	-
00037	Battery	Kapaxen	BP-BP828-K-CN	Kapaxen Battery for BP-282	-	-	-
00038	Battery	Kapaxen	BP-BP828-K-CN	Kapaxen Battery for BP-282	-	-	-
00039	Battery	Lenmar		Lenmar LIZ307P Camcorder Battery	2012-09-12	24	24
00040	Battery	Lenmar		Lenmar LIZ307P Camcorder Battery	2012-09-12	24	24
00041	Battery	Lenmar		Lenmar LIZ307P Camcorder Battery	2012-09-12	24	24
00042	Battery	Lenmar		Lenmar LIZ307P Camcorder Battery	2012-09-12	24	24
00043	Battery	Lenmar		Lenmar LIZ307P Camcorder Battery	2012-09-12	24	24
00044	Battery	Lenmar		Lenmar LIZ307P Camcorder Battery	2012-09-12	24	24
00045	Battery	Lenmar		Lenmar LIZ307P Camcorder Battery	2012-09-12	24	24
00046	Battery	Lenmar		Lenmar LIZ307P Camcorder Battery	2012-09-12	24	24
00047	Battery	Lenmar		Lenmar LIZ307P Camcorder Battery	2012-09-12	24	24
00048	Battery	Lenmar		Lenmar LIZ307P Camcorder Battery	2012-09-12	24	24
00049	Battery	Lenmar		Lenmar LIZ307P Camcorder Battery	2012-09-12	24	24
00050	Battery	Lenmar		Lenmar BCUN13 Universal Charger	2012-09-12	40	40
00051	Battery	Lenmar		Lenmar BCUN13 Universal Charger	2012-09-12	40	40
00052	Battery	Lenmar		Lenmar BCUN13 Universal Charger	2012-09-12	40	40
00053	Battery	Lenmar		Lenmar BCUN13 Universal Charger	2012-09-12	40	40
00054	Battery	Lenmar		Lenmar BCUN13 Universal Charger	2012-09-12	40	40
00055	Battery	Lenmar		Lenmar BCUN13 Universal Charger	2012-09-12	40	40
00056	Battery	Power2000	ACD-788	Power2000 REPL CAMCRDR BATT F/CA BP-8	-	-	-
00057	Battery	Power2000	ACD-788	Power2000 REPL CAMCRDR BATT F/CA BP-8	-	-	-
00058	Battery	Power2000	ACD-788	Power2000 REPL CAMCRDR BATT F/CA BP-8	-	-	-
00059	Cabling	Generic		100' Dual Video/Audio Cables	2011-08-01	175	175
00060	Cabling	Generic		100' Dual Video/Audio Cables	2011-08-01	175	175
00061	Cabling	Generic		100' Dual Video/Audio Cables	2011-08-01	175	175
00062	Camera	Canon	XA35	Camera #1 Staff Canon XA35 Professic	2017-09-01	2099	2099
00063	Camera	Canon	XA35	Camera #2 Staff Canon XA35 Professic	2017-09-01	2099	2099
00064	Camera	Canon	XA35	Camera #3 Staff Canon XA35 Professic	2017-09-01	2099	2099
00065	Camera	Canon	XA35	Camera #1 Canon XA35 Professional C	2017-09-01	2099	2099
00066	Camera	Canon	XA35	Camera #2 Canon XA35 Professional C	2017-09-01	2099	2099
00067	Camera	Panasonic		Camera #4 Panasonic AG-HMC80Pj	2012-09-10	1979	1979
00068	Camera	Panasonic		Panasonic AG-HMC80Pj	2012-07-06	1939	1939
00069	Camera	Panasonic		Camera #4 Panasonic AG-HMC80Pj	2012-07-06	1939	1939
00070	Camera	Panasonic		Panasonic AG-HMC80Pj	2012-07-06	1939	1939
00071	Camera Accessories		247-TC-SH	24/7 Traffic Collection Shoulder Bag	-	-	-
00072	Camera Accessories		247-TC-SH	24/7 Traffic Collection Shoulder Bag	-	-	-
00073	Camera Accessories		247-TC-SH	24/7 Traffic Collection Shoulder Bag	-	-	-

00074	Camera Accessories	Adorama	FACSSS	Adorama Camcorder Shoulder Support Ver2	-	-	-
00075	Camera Accessories	Adorama	FACSSS	Adorama Camcorder Shoulder Support Ver2	-	-	-
00076	Camera Accessories	Adorama	FACSSS	Adorama Camcorder Shoulder Support Ver2	-	-	-
00077	Camera Accessories	Bower	SAMWZ0	Bower 20 Slot Memory Card Wallet	-	-	-
00078	Camera Accessories	Bower	SAMWZ0	Bower 20 Slot Memory Card Wallet	-	-	-
00079	Camera Accessories	Bower	SAMWZ0	Bower 20 Slot Memory Card Wallet	-	-	-
00080	Camera Accessories	Flashpoint	FPCR130	Flashpoint SD/Micro SD/MSD USB2.0 Reade	-	-	-
00081	Camera Accessories	Flashpoint	FPCR130	Flashpoint SD/Micro SD/MSD USB2.0 Reade	-	-	-
00082	Camera Accessories	Flashpoint	FPCR130	Flashpoint SD/Micro SD/MSD USB2.0 Reade	-	-	-
00083	Camera Accessories	Kata	FPCR130	Flashpoint SD/Micro SD/MSD USB2.0 Reade	-	-	-
00084	Camera Accessories	Kata	FPCR130	Flashpoint SD/Micro SD/MSD USB2.0 Reade	-	-	-
00085	Camera Accessories	Kata	FPCR130	Flashpoint SD/Micro SD/MSD USB2.0 Reade	-	-	-
00086	Camera Accessories	Kata	FPCR130	Flashpoint SD/Micro SD/MSD USB2.0 Reade	-	-	-
00087	Camera Accessories	KATA	FPCR130	Flashpoint SD/Micro SD/MSD USB2.0 Reade	-	-	-
00088	Camera Accessories	KATA	FPCR130	Flashpoint SD/Micro SD/MSD USB2.0 Reade	-	-	-
00089	Camera Accessories	KATA	FPCR130	Flashpoint SD/Micro SD/MSD USB2.0 Reade	-	-	-
00090	Camera Accessories	Manfrotto	FPCR130	Flashpoint SD/Micro SD/MSD USB2.0 Reade	-	-	-
00091	Camera Accessories	Manfrotto	FPCR130	Flashpoint SD/Micro SD/MSD USB2.0 Reade	-	-	-
00092	Camera Accessories	Manfrotto	FPCR130	Flashpoint SD/Micro SD/MSD USB2.0 Reade	-	-	-
00093	Camera Accessories	ProOPTIC	PROXCPK1	ProOPTIC Cleaning Kit	-	-	-
00094	Camera Accessories	ProOPTIC	PROXCPK1	ProOPTIC Cleaning Kit	-	-	-
00095	Camera Accessories	ProOPTIC	PROXCPK1	ProOPTIC Cleaning Kit	-	-	-
00096	Camera Accessories	ProOPTIC	PRO-FL-58-Kit	ProOPTIC 58 Filter Kit	-	-	-
00097	Camera Accessories	ProOPTIC	PRO-FL-58-Kit	ProOPTIC 58 Filter Kit	-	-	-
00098	Camera Accessories	ProOPTIC	PRO-FL-58-Kit	ProOPTIC 58 Filter Kit	-	-	-
00099	Camera Accessories	Sandisk	BN1710250860G	SANDSK EXTRMPRO SDHC Card 64gb	-	-	-
00100	Camera Accessories	Sandisk	BN1710250860G	SANDSK EXTRMPRO SDHC Card 64gb	-	-	-
00101	Camera Accessories	Sandisk	BN1710250860G	SANDSK EXTRMPRO SDHC Card 64gb	-	-	-
00102	Camera Accessories	Sigma	BN1710250860G	SANDSK EXTRMPRO SDHC Card 64gb	-	-	-
00103	Camera Accessories	Transcent	BN1710250860G	SANDSK EXTRMPRO SDHC Card 64gb	-	-	-
00104	Camera Accessories	Varizoom	BN1710250860G	SANDSK EXTRMPRO SDHC Card 64gb	-	-	-
00105	Camera Accessories	Varizoom	BN1710250860G	SANDSK EXTRMPRO SDHC Card 64gb	-	-	-
00106	Camera Accessories	Varizoom	BN1710250860G	SANDSK EXTRMPRO SDHC Card 64gb	-	-	-
00107	Camera Accessories	Vivitar	531012	Sigma TSG-490	2011-08-01	200	-
00108	Camera Accessories	Vivitar	531012	Sigma TSG-490	2011-08-01	200	-
00109	Camera Accessories	Vivitar	531012	Sigma TSG-490	2011-08-01	200	-
00110	Camera Accessories	Apple	531012	Transcent 32GB CF 1000X	2013-07-01	108	-
00111	Camera Accessories	Apple	531012	Transcent 32GB CF 1000X	2013-07-01	108	-

00112	Edit	Apple		Wireless Apple iMac mouse	-	-	-
00113	Edit	Apple		Wireless Apple iMac mouse	-	-	-
00114	Edit	Apple		Wireless Apple iMac Keyboard	-	-	-
00115	Edit	Apple		Wireless Apple iMac Keyboard	-	-	-
00116	Edit	Apple		Wireless Apple iMac Keyboard	-	-	-
00117	Edit	Apple		Wireless Apple iMac Keyboard	-	-	-
00118	Edit	Apple		Wireless Apple iMac Keyboard	-	-	-
00119	Edit	Apple		Wireless Apple iMac Keyboard	-	-	-
00120	Graphics	Sony		Wired Apple Mouse	-	-	-
00121	Hard Drives	G-Tech		Sony VPL-PX10 Projector	-	2012-01-15	1400
00122	Hard Drives	G-Tech		G-Tech G-Drive V4 2TB	-	2012-01-15	238
00123	Hard Drives	Lacie		G-Tech G-Drive V4 2TB	-	2012-01-15	238
00124	Hard Drives	Lacie		Lacie Rugged 500 GB Hard Drive	-	2012-01-15	152
00125	Hard Drives	Lacie		Lacie Rugged 500 GB Hard Drive	-	2012-01-15	152
00126	Hard Drives	Lacie		Lacie Rugged 500 GB Hard Drive	-	2012-01-15	152
00127	Hard Drives	Lacie		Lacie Rugged 500 GB Hard Drive	-	2012-01-15	152
00128	Hard Drives	Lacie		Lacie Rugged 500 GB Hard Drive	-	2012-01-15	152
00129	Hard Drives	Lacie		Lacie D2 Quad Drive 2TB	-	2012-01-15	267
00130	Hard Drives	Lacie		Lacie 5 TB External Harddrive USB-C	-	-	-
00131	Microphone	Lacie		Lacie 5 TB External Harddrive USB-C	-	-	-
00132	Microphone	Audio Technica		Audio-Technica	-	-	500
00133	Microphone	Azden		310/330 Series UHF Wireless system	-	-	-
00134	Microphone	Electrovoice		Electrovoice RE10 Dynamic Cardioid	-	-	100
00135	Microphone	H&A	HAAMKSLR100	H&A Shotgun Mic F/H-DSLR/Video MKSLR11-	-	-	-
00136	Microphone	H&A	HAAMKSLR100	H&A Shotgun Mic F/H-DSLR/Video MKSLR11-	-	-	-
00137	Microphone	H&A	HAAMKSLR100	H&A Shotgun Mic F/H-DSLR/Video MKSLR11-	-	-	-
00138	Microphone	Sennheiser		Sennheiser	-	-	800
00139	Microphone	Shure		Shure PGA 48 Dynamic Microphone	-	2017-08-01	39
00140	Microphone	Shure		Shure PGA 48 Dynamic Microphone	-	2017-08-01	39
00141	Microphone	Shure		Shure PGA 48 Dynamic Microphone	-	2017-08-01	39
00142	Microphone	Shure		Shure PGA 48 Dynamic Microphone	-	2017-08-01	39
00143	Microphone	Shure		Shure PGA 48 Dynamic Microphone	-	2017-08-01	39
00144	Microphone	Shure		Shure PGA 48 Dynamic Microphone	-	2017-08-01	39
00145	Microphone	Shure		Shure SM 87	-	-	250
00146	Microphone	Shure		Shure SM 87	-	-	250
00147	Microphone	Shure		Shure SM 11	-	-	600
00148	Microphone	Shure		Shure SM 11	-	-	600
00149	Microphone	Shure		Shure SM 11	-	-	600

00150	Microphone	Shure		Shure SM 11	-	600
00151	Microphone	Shure		Shure SM 11	-	600
00152	Microphone	Shure		Shure SM 48	-	100
00153	Microphone	Shure		Shure SM 57	-	300
00154	Microphone	Shure		Shure SM 57	-	300
00155	Microphone	Shure		Shure SM 57	-	300
00156	Monitor	JVC		JVC TM-R9V	-	500
00157	Monitor	JVC		JVC TM-R9V	-	500
00158	Monitor	Samsung		Samsung T24A350	2011-12-01	300
00159	Monitor	Sony		Sony Trinitron 13" Monitor	-	-
00160	Portable Lighting	Arri		ARRI 300 plus	-	-
00161	Portable Lighting	Arri		ARRI 300 plus	-	-
00162	Portable Lighting	Arri		ARRI 650 plus	-	-
00163	Portable Lighting	Arri		Chimera Light Softener	-	-
00164	Portable Lighting	Arri		Light Stand	-	-
00165	Portable Lighting	Arri		Light Stand	-	-
00166	Portable Lighting	Arri		Light Stand	-	-
00167	Portable Lighting	Flashpoint	CL-160	FP 160 LED - On Camera Light FPLCL160	-	-
00168	Portable Lighting	Flashpoint	CL-160	FP 160 LED - On Camera Light FPLCL160	-	-
00169	Portable Lighting	Flashpoint	CL-160	FP 160 LED - On Camera Light FPLCL160	-	-
00170	Portable Lighting	Sima		Sima SL-20LX	2012-12-04	90
00171	Portable Lighting	Sima		Sima SL-20LX	2012-12-04	90
00172	Portable Lighting	Sima		Sima SL-20LX	2012-12-04	90
00173	Portable Lighting	Sima		Sima SL-20LX	2012-11-02	90
00174	Portable Lighting	Sima		Sima SL-20LX	2012-11-02	90
00175	Portable Lighting	Sima		Sima SL-20LX	2012-11-02	90
00176	Remote Equipment	Generic		Tricaster Travel Case w/ 19" Monitor	2011-08-01	795
00177	Remote Equipment	Newtek		Newtek Tricaster 300 Production Switcher	2012-07-01	9995
00178	Remote Equipment	Newtek		Newtek Live Control LC11	2012-07-01	1835
00179	Remote Equipment	Newtek		Newtek Tricaster 300 Production Switcher	2011-08-01	15000
00180	Remote Equipment	Newtek		Newtek Live Control LC11	2011-08-01	1650
00181	Tripod	Libec		Libec DL-3	2011-12-01	180
00182	Tripod	Libec		Libec DL-3	2011-12-01	180
00183	Tripod	Libec		Libec DL-3	2011-12-01	180
00184	Tripod	Libec		Libec RS250M Tripod System	2011-08-01	775
00185	Tripod	Libec		Libec RS250M Tripod System	2011-08-01	775
00186	Tripod	Libec		Libec RS250M Tripod System	2011-08-01	775
00187	Tripod	Libec		Libec LIB-PH 4B Pan Arm	2011-08-01	35

00188	Tripod	Libec		Libec LIB-PH 4B Pan Arm	2011-08-01	35
00189	Tripod	Libec		Libec LIB-PH 4B Pan Arm	2011-08-01	35
00190	Tripod	Manfrotto		Manfrotto MV/T502AM Tripod	2012-09-12	300
00191	Tripod	Manfrotto		Manfrotto MV/T502AM Tripod	2012-09-12	300
00192	Tripod	Manfrotto		Manfrotto MV/T502AM Tripod	2012-09-12	300
00193	Tripod	Manfrotto		Manfrotto MV/T502AM Tripod	2012-09-12	300
00194	Tripod	Takama	TAKV3300	Takama TAKV3300 Tripod	2017-09-01	-
00195	Tripod	Takama	TAKV3300	Takama TAKV3300 Tripod	2017-09-01	-
00196	Audio	Unknown		Studio Monitor 40-48"	2017-09-01	600
00197	Cabling	Brightline		Brightline 12 ft. power cord	2015-11-01	-
00198	Cabling	Brightline		Brightline 12 ft. power cord	2015-11-01	-
00199	Cabling	Brightline		Brightline 12 ft. power cord	2015-11-01	-
00200	Cabling	Unknown		New Studio Cabling	2015-09-01	532
00201	Cabling	Unknown		New Studio Cabling	2015-09-01	532
00202	Cabling	Unknown		New Studio Cabling	2015-09-01	532
00203	Camera	Canon		Canon XF305	2014-10-01	5995
00204	Camera	Canon		Canon XF305	2014-10-01	5995
00205	Camera	Canon		Canon XF305	2014-10-01	5995
00206	Camera Accessories	Generic		Extension Cable for Tally Lights	2013-09-01	17
00207	Camera Accessories	Generic		Extension Cable for Tally Lights	2013-09-01	17
00208	Camera Accessories	Generic		Extension Cable for Tally Lights	2013-09-01	17
00209	Camera Accessories	Metasetz		Metasetz TL-2 Tally Light w/shoe mount	2013-09-01	47
00210	Camera Accessories	Metasetz		Metasetz TL-2 Tally Light w/shoe mount	2013-09-01	47
00211	Camera Accessories	Metasetz		Metasetz TL-2 Tally Light w/shoe mount	2013-09-01	47
00212	Camera Accessories	Metasetz		Metasetz TL-2 Tally Light w/shoe mount	2012-07-01	141
00213	Camera Accessories	Metasetz		Metasetz TL-2 Tally Light w/shoe mount	2012-07-01	141
00214	Camera Accessories	Metasetz		Metasetz TL-2 Tally Light w/shoe mount	2012-07-01	141
00215	Camera Accessories	Stellar Labs		Stellar Labs Extension Cable for Tally Lights	2012-07-01	50
00216	Camera Accessories	Stellar Labs		Stellar Labs Extension Cable for Tally Lights	2012-07-01	50
00217	Camera Accessories	Stellar Labs		Stellar Labs Extension Cable for Tally Lights	2012-07-01	50
00218	Camera Accessories	Tally Light		Tally Light Camera Box	2017-09-01	35
00219	Camera Accessories	Tally Light		Tally Light Camera Box	2017-09-01	35
00220	Camera Accessories	Tally Light		Tally Light Camera Box	2017-09-01	35
00221	Camera Accessories	Varizoom		Varizoom VZ Rock Remote Controller	2014-10-01	195
00222	Camera Accessories	Varizoom		Varizoom VZ Rock Remote Controller	2014-10-01	195
00223	Camera Accessories	Varizoom		Varizoom VZ Rock Remote Controller	2014-10-01	195
00224	Cart	Generic		Rolling Cart for Studio Monitor	2017-09-01	565
00225	Microphone	Sennheiser		Sennheiser Boom Mic	-	-

00226	Microphone	Sony	Sony UWP-V6 Wireless Lavelliere	2011-08-01	700
00227	Microphone	Sony	Sony UWP-V6 Wireless Lavelliere	2011-08-01	700
00228	Microphone	Sony	Sony UWP-V6 Wireless Lavelliere	2011-08-01	700
00229	Microphone	Sony	Sony UWP-V6 Wireless Lavelliere	2011-08-01	700
00230	Monitor	Asus	Asus monitor used for studio cue system	-	-
00231	Monitor	Samsung	Television set used for video monitor	-	-
00232	Props	Unknown	10'H x 25'W Black encore curtain	2015-11-01	624
00233	Props	Unknown	10'H x 25'W Black encore curtain	2015-11-01	624
00234	Props	Unknown	10'H x 25" Gray curtain	2015-11-01	624
00235	Props	Unknown	10'H x 25" Gray curtain	2015-11-01	624
00236	Studio Lighting	Altman	Altman 2K Soft Light	-	1200
00237	Studio Lighting	Altman	Altman 1K Fresnel	-	3500
00238	Studio Lighting	Bose	Bose 301 (pair)	-	350
00239	Studio Lighting	Brightline	Brightline Lupolux 1000 Fresnel 3200 K	2015-11-01	-
00240	Studio Lighting	Brightline	Brightline Lupolux 1000 Fresnel 3200 K	2015-11-01	-
00241	Studio Lighting	Brightline	Brightline Lupolux 1000 Fresnel 3200 K	2015-11-01	-
00242	Studio Lighting	Brightline	Brightline Lupolux 1000 Fresnel 3200 K	2015-11-01	-
00243	Studio Lighting	Brightline	Brightline Lupolux 650 Fresnel 3200 K	2015-11-01	-
00244	Studio Lighting	Brightline	Brightline Lupolux 650 Fresnel 3200 K	2015-11-01	-
00245	Studio Lighting	Brightline	Brightline Lupolux 650 Fresnel 3200 K	2015-11-01	-
00246	Studio Lighting	Brightline	Brightline Lupolux 650 Fresnel 3200 K	2015-11-01	-
00247	Studio Lighting	Brightline	Brightline Lupolux 650 Fresnel 3200 K	2015-11-01	-
00248	Studio Lighting	Brightline	Brightline Lupolux 650 Fresnel 3200 K	2015-11-01	-
00249	Studio Lighting	Brightline	Brightline Lupolux 650 Fresnel 3200 K	2015-11-01	-
00250	Studio Lighting	Brightline	Brightline Lupolux 650 Fresnel 3200 K	2015-11-01	-
00251	Studio Lighting	Brightline	Brightline SeriesONE 1.4 DMX on board	2015-11-01	-
00252	Studio Lighting	Brightline	Brightline SeriesONE 1.4 DMX on board	2015-11-01	-
00253	Studio Lighting	Brightline	Brightline SeriesONE 1.4 DMX on board	2015-11-01	-
00254	Studio Lighting	Brightline	Brightline SeriesONE S1.2 & S1.4 intensifier	2015-11-01	-
00255	Studio Lighting	Brightline	Brightline SeriesONE S1.2 & S1.4 intensifier	2015-11-01	-
00256	Studio Lighting	Brightline	Brightline SeriesOne S1.2 & S1.4 Intensifier	2015-11-01	-
00257	Studio Lighting	Brightline	BSeriesOne S1.2 & S1.4 broad field screen	2015-11-01	-
00258	Studio Lighting	Brightline	BSeriesOne S1.2 & S1.4 broad field screen	2015-11-01	-
00259	Studio Lighting	Brightline	BSeriesOne S1.2 & S1.4 broad field screen	2015-11-01	-
00260	Studio Lighting	Colortran	Colortran Scoop	-	4000
00261	Studio Lighting	Colortran	Colortran Scoop	-	4000
00262	Studio Lighting	Colortran	Colortran 2k Fresnel	-	2000
00263	Studio Lighting	Colortran	Colortran Set Light Model #108-005	-	4000

00264	Studio Lighting	Colortran	Colortran Set Light Model #108-005	-	4000
00265	Studio Lighting	Generic	(1) 25ft XLR5 DMX extension cable	2015-11-01	-
00266	Studio Lighting	Generic	Generic Cyc Light LE	-	4000
00267	Studio Lighting	Generic	Generic Cyc Light LE	-	4000
00268	Studio Lighting	Ianiro	Ianiro Mini Irits "1" Model #3460 Quartz Col-	-	2000
00269	Studio Lighting	Lex	Lex 50ft XLR5 DMX extension cable	2015-11-01	-
00270	Studio Lighting	Lex	(13) Lex 10 ft. XLR5 DMX extension cable	2015-11-01	-
00271	Studio Lighting	Lex	(12) Lex 10 ft. GR 5-15 extension cable	2015-11-01	-
00272	Studio Lighting	Mathews	Mathews telescoping hanger w/pipe clamp	2015-11-01	-
00273	Studio Lighting	Mathews	Mathews telescoping hanger w/pipe clamp	2015-11-01	-
00274	Studio Lighting	Mathews	Mathews telescoping hanger w/pipe clamp	2015-11-01	-
00275	Studio Lighting	Strand	Strand CD80SV Dual 20A 2.4 K relay module	2015-11-01	260
00276	Studio Lighting	Strand	Strand C80 System Supervisor Power Centel	-	12000
00277	Studio Lighting	Strand	Strand Model 60 Polaris	-	6000
00278	Studio Lighting	Strand	Strand Model 60 Polaris	-	6000
00279	Studio Lighting	Strand	Strand Model 60 Polaris	-	6000
00280	Studio Lighting	Strand	Strand Broad Light	-	2000
00281	Studio Lighting	Strand	Strand Scoop	-	4000
00282	Studio Lighting	Strand	Strand Scoop	-	4000
00283	Teleprompter	Autoscript	teleprompting hardware, hood and tripod n-	-	-
00284	Tripod	Canon	Canon TB1	2014-10-01	35
00285	Tripod	Canon	Canon TB1	2014-10-01	35
00286	Tripod	Canon	Canon TB1	2014-10-01	35
00287	Tripod	Manfrotto	Manfrotto MVK502AM-1	2014-10-01	450
00288	Tripod	Manfrotto	Manfrotto MVK502AM-1	2014-10-01	450
00289	Tripod	Manfrotto	Manfrotto MVK502AM-1	2014-10-01	450
00290	Tripod	Manfrotto	Manfrotto MAN127	2014-10-01	165
00291	Tripod	Manfrotto	Manfrotto MAN127	2014-10-01	165
00292	Tripod	Manfrotto	Manfrotto MAN127	2014-10-01	165
00293	Tripod	Manfrotto	Manfrotto 3066 tripod head	-	-
00294	Tripod	Manfrotto	Manfrotto 3068 tripod	-	-
00295	Tripod	Manfrotto	Manfrotto 3067 tripod wheels	-	-
00296	Audio	Audiocom	Audiocom MS-2001	-	-
00297	Audio	Clearcom	Clearcom 501	-	495
00298	Audio	Clearcom	Clearcom 501	-	495
00299	Audio	Clearcom	Clearcom 501	-	495
00300	Audio	Clearcom	Clearcom 502	-	495
00301	Audio	Clearcom	Clearcom 502	-	495

00302	Audio	Clearcom	Clearcom MS232	-	1015
00303	Audio	Clearcom	Clearcom TR50	-	250
00304	Audio	Comrex	Comrex Stac VIP System STAC VOIP	2015-07-01	4475
00305	Audio	Comrex	Comrex Stac VIP Control Surface	2015-07-01	Included
00306	Audio	Crown	Crown D75 A	-	499
00307	Audio	Mackie	Mackie SR32	-	4200
00308	Audio	Shure	Shure Model M267	-	500
00309	Audio	Shure	Shure XLR to USB signal adapter	-	100
00310	Audio	Telex	Telex BP-100	-	-
00311	Audio	Unknown	Desk Mic Stand	-	25
00312	Audio	Unknown	Desk Mic Stand	-	25
00313	Audio	Unknown	Countdown Timer	-	475
00314	Audio	Yamaha	MSP5 Studio Speakers	-	-
00315	Audio	Yamaha	MSP5 Studio Speakers	-	-
00316	Audio	Yamaha	Yamaha Digital Multi Effect REX 50	-	150
00317	Camera Accessories	Tally Light	Tally Light Interface	2017-09-01	295
00318	Graphics	Videonics	Videonics CG3000	-	895
00319	Audio	Shure	Shure SM48	-	100
00320	Microphone	Audiotechnica	Audiotechnica ATW1452	-	750
00321	Microphone	Senheiser	Senheiser SK 100	-	-
00322	Microphone	Senheiser	Senheiser EK 100	-	-
00323	Microphone	Senheiser	Senheiser SK 100	-	-
00324	Microphone	Senheiser	Senheiser EK 100	-	-
00325	Microphone	Shure	Shure SM48	-	100
00326	Microphone	Shure	Shure SM48	-	100
00327	Microphone	Shure	Shure PG48	-	50
00328	Microphone	Shure	Shure SM58	-	100
00329	Microphone	Shure	Shure Wired Lavallieres	-	200
00330	Microphone	Shure	Shure Wired Lavallieres	-	200
00331	Microphone	Shure	Shure Wired Lavallieres	-	200
00332	Microphone	Shure	Shure Wired Lavallieres	-	200
00333	Microphone	Sony	Sony UTX-B2	-	-
00334	Microphone	Sony	Sony UTX-P1	-	-
00335	Microphone	Sony	Sony URX-P2	-	-
00336	Microphone	Sony	Sony UTX-B2	-	-
00337	Microphone	Sony	Sony UTX-P1	-	-
00338	Microphone	Sony	Sony URX-P2	-	-
00339	Microphone	Sony	Sony UTX-B2	-	-

00340	Microphone	Sony		Sony UTX-P1	-	-	-
00341	Microphone	Sony		Sony URX-P2	-	-	-
00342	Microphone	Sony		Sony FWD-32LX2F monitor	2016-12-06	-	-
00343	Monitor	NEC		NEC PM 1271A	-	650	-
00344	Monitor	Sony		Sony FWD-32LX2F monitor	2016-12-06	-	-
00345	Video Switcher	NewTek	TC1	TC1 Tricaster	2017-09-01	17995	-
00346	Video Switcher	NewTek		Control Surface for TC1	2017-09-01	-	-
00347	Audio	Behringer	Monitor 1C	Behringer Studio Speakers (1 of 2)	2017-09-01	40	40
00348	Audio	Behringer	Monitor 1C	Behringer Studio Speakers (2 of 2)	2017-09-01	40	40
00349	Audio	Pyle		Countdown Monitor Equipment	2020-05-21	370	370
00350	Audio	Samsung		Studio Monitor 40-48"	2017-09-01	600	600
00351	Audio	Yamaha		Yamaha 5" Active Speakers	2017-09-01	275	275
00352	Audio	Yamaha		Yamaha 5" Active Speakers	2017-09-01	275	275
00353	Audio	Yamaha		Yamaha 5" Active Speakers	2017-09-01	275	275
00354	Audio	Yamaha		Yamaha 5" Active Speakers	2017-09-01	275	275
00355	Camera	Canon		Canon XF305	2011-08-01	7500	7500
00356	Camera	Canon		Canon XF305	2011-08-01	7500	7500
00357	Camera	Canon		Canon XF305	2011-08-01	7500	7500
00358	Camera Accessories	Autocue		Autocue 17" Lite Teleprompter Package	2017-09-01	1420	1420
00359	Camera Accessories	MetaSetz		MetaSetz Tally System	2020-05-21	350	350
00360	Cart	Generic		Rolling Cart for Studio Monitor	2017-09-01	565	565
00361	Studio Lighting	Videssence	SWO44	Videssence Softwash LED SWO44 Lights	2017-09-01	825	825
00362	Studio Lighting	Videssence	SWO44	Videssence Softwash LED SWO44 Lights	2017-09-01	825	825
00363	Studio Lighting	Videssence	SWO44	Videssence Softwash LED SWO44 Lights	2017-09-01	825	825
00364	Studio Lighting	Videssence	SWO44	Videssence Softwash LED SWO44 Lights	2017-09-01	825	825
00365	Studio Lighting	Videssence	SKLV50	Videssence Softkey LED SKLV50 Lights	2017-09-01	1075	1075
00366	Studio Lighting	Videssence	SKLV50	Videssence Softkey LED SKLV50 Lights	2017-09-01	1075	1075
00367	Studio Lighting	Videssence	SKLV50	Videssence Softkey LED SKLV50 Lights	2017-09-01	1075	1075
00368	Studio Lighting	Videssence	SKLV50	Videssence Softkey LED SKLV50 Lights	2017-09-01	1075	1075
00369	Studio Lighting	Videssence	SKLV50	Videssence Softkey LED SKLV50 Lights	2017-09-01	1075	1075
00370	Studio Lighting	Videssence	SKLV50	Videssence Softkey LED SKLV50 Lights	2017-09-01	1075	1075
00371	Tripod	Canon		Canon TA-100 Tripod Adapter	2011-08-01	150	150
00372	Tripod	Canon		Canon TA-100 Tripod Adapter	2011-08-01	150	150
00373	Tripod	Canon		Canon TA-100 Tripod Adapter	2011-08-01	150	150
00374	Tripod	Manfrotto		Manfrotto 509Hd Head w/ 545B Tripod	2017-09-01	1295	1295
00375	Tripod	Manfrotto		Manfrotto 509Hd Head w/ 545B Tripod	2017-09-01	1390	1390
00376	Tripod	Manfrotto		Manfrotto 509Hd Head w/ 545B Tripod	2017-09-01	1390	1390
00377	Tripod	Manfrotto		#114MV Manfrotto Dolly System	2017-09-01	375	375

00378	Tripod	Manfrotto		#114MV Manfrotto Dolly System	2017-09-01	340
00379	Tripod	Manfrotto		#114MV Manfrotto Dolly System	2017-09-01	340
00380	Tripod	Manfrotto		Manfrotto Dolly System - basic	2017-09-01	175
00381	Tripod	Manfrotto		Manfrotto Dolly System - basic	2017-09-01	175
00382	Tripod	Manfrotto		Manfrotto MV/H502 Head w. MV/T502 Am Tr	2017-09-01	490
00383	Tripod	Takama	TAKV3300	Takama TAKV3300 Tripod	2017-09-01	-
00384	Audio	Art	SLA1	Art Studio Amplifier	2017-09-01	245
00385	Audio	Blackmagic		Blackmagic Design HDSDI to HDMI Converter	2017-09-01	370
00386	Audio	Mackie	1604VLZ4	Mackie 1604VLZ4 16 Channel Mixer	2017-09-01	895
00387	Audio	Pyle		Speaker Stand (1 of 2)	2017-09-01	80
00388	Audio	Pyle		Speaker Stand (2 of 2)	2017-09-01	80
00389	Audio	Shure	UC4-UA	Wireless Receiver #0	-	-
00390	Audio	Shure	UC4-UA	Wireless Receiver #5	-	-
00391	Audio	Shure	UC4-UA	Wireless Receiver #6	-	-
00392	Audio	Shure	UC1-UA	Wireless Mic #0	-	-
00393	Audio	Shure	UC1-UA	Wireless Mic #5	-	-
00394	Audio	Shure	UC1-UA	Wireless Mic #6	-	-
00395	Audio	Shure	UC4-UA	Wireless Receiver #MIC 6	-	-
00396	Audio	Yamaha	MSP5 Studio	Monitor Speaker (Left)	-	-
00397	Audio	Yamaha	MSP5 Studio	Monitor Speaker (Right)	-	-
00398	Cabling	CyberPower	PFC Sinewave 0R1500PFCRT2U	Surge Protector in rack	-	-
00399	Computer	eMachines	W3644	PC Tower	-	-
00400	Graphics	Dell	Optiplex 990	Graphics PC Tower	-	-
00401	Graphics	Dell	AX510	Graphics PC Monitor	-	-
00402	Graphics	Microsoft	D66-0069	Graphics PC Mouse	-	-
00403	Graphics	NewTek		Graphics PC Keyboard	-	-
00404	Microphone	Sennheiser	SK100	Sennheiser G3 wireless mic Transmitter #4	2017-09-01	625
00405	Microphone	Sennheiser	SK100	Sennheiser G3 wireless mic Transmitter #3	2017-09-01	625
00406	Microphone	Sennheiser	EK100	Sennheiser G3 wireless mic Receiver #4	2017-09-01	625
00407	Microphone	Sennheiser	EK100	Sennheiser G3 wireless mic Receiver #3	2017-09-01	625
00408	Microphone	Shure	450 Series II	Shure Omnidirectional Dynamic Base Station	2017-09-01	125
00409	Monitor	Sony	FWD-32LX2F	Sony Monitor	2016-12-01	-
00410	Monitor	Sony	FWD-32LX2F	Sony Monitor	2016-12-01	-
00411	Rack	Unknown		Equipment Racks (1 of 2)	2017-09-01	165
00412	Rack	Unknown		Equipment Racks (2 of 2)	2017-09-01	165
00413	Rack	Winstead		Rack Mount Cabinet	-	-
00414	Tally Light	MetaSETZ	TLC8	Tally Light Controller	-	-
00415	Teleprompter	Lenovo	Thinkpad T530	Laptop For Teleprompter	-	-

00416	Teleprompter	Lenovo	Thinkpad T530	Laptop For Teleprompter	-	-	-
00417	Video Converter	Fosmon	HD1882	VGA to RCA Adapter	-	-	-
00418	Video Converter	Steren	200-315	2-Way Punch Button Switch	-	-	-
00419	Video Switcher	NewTek	Tricaster 860	NewTek Tricaster 860 (Texolve Digital Demc	2019-05-01	9995	-
00420	Video Switcher	NewTek	Tricaster X860 Control Surface	Control Surface for Tricaster 860	2019-05-01	-	-
00421	Video Switcher	NewTek		Tricaster Keyboard	-	-	-
00422	Video Switcher	NewTek		Tricaster Mouse	-	-	-
00423	Audio	Sony	MDR-2X100	Sony Headphones	-	-	-
00424	Audio	Sony	MDR-2X100	Sony Headphones	-	-	-
00425	Audio	Sony	MDR-2X100	Sony Headphones	-	-	-
00426	Audio	Sony	MDR-2X100	Sony Headphones	-	-	-
00427	Edit	Alienware	Mod MUO	Alienware Mouse	2019-08-01	-	-
00428	Edit	Alienware	SK-8165	Alienware Keyboard	2019-08-01	-	-
00429	Edit	Alienware	Mod MUO	Alienware Mouse	2019-08-01	-	-
00430	Edit	Alienware	SK-8165	Alienware Keyboard	2019-08-01	-	-
00431	Edit Suite	Apple	iMAC 19,1	Apple iMac 27" 3.6GHz Intel-C	2019-08-01	2913	-
00432	Edit Suite	Apple	iMAC 19,1	Apple iMac 27" 3.6GHz Intel-C	2019-08-01	2913	-
00433	Edit Suite	Apple	iMAC 19,1	Apple iMac 27" 3.6GHz Intel-C	2019-08-01	2913	-
00434	Edit	Apple	A1644	Mac Keyboard	2019-08-01	-	-
00435	Edit	Apple	A1644	Mac Keyboard	2019-08-01	-	-
00436	Edit	Apple	A1644	Mac Keyboard	2019-08-01	-	-
00437	Edit	Apple	A1657	Mac Mouse	2019-08-01	-	-
00438	Edit	Apple	A1657	Mac Mouse	2019-08-01	-	-
00439	Edit	Apple	A1657	Mac Mouse	2019-08-01	-	-
00440	Edit Suite	Dell	Aurora R6	Alienware Aurora R6 Compute	2019-08-01	1729	-
00441	Edit Suite	Dell	Aurora R6	Alienware Aurora R6 Compute	2019-08-01	1729	-
00442	Edit	Emerson	ZV4Z7EM5	DVD Recorder/VCR	-	-	-
00443	Edit	HP	VCVRA-0101	HP Printer	-	-	-
00444	Edit	Samsung	T24A350	Monitor for Alienware Tower	2019-08-01	-	-
00445	Monitor	Asus	V5228	Monitor for Alienware Tower	-	150	-
00446	Monitor	Sony	KDL-40V2500	Sony Bravia TV	-	-	-
00447	Monitor	Sony	FWD-32LX2F	Sony Monitor	2016-12-01	-	-
00448	Camera	Panasonic		Panasonic AG-HMCL150	2018-04-23	-	-
00449	Camera Accessories	Generic		Matte Box kit for camera w/ 5" monitor	2018-04-23	-	-
00450	Camera Mount	Proaim	Kit 10c-e	Proaim Kit-10 C (E)	-	-	-
00451	Edit	Apple		Apple iMac 21.5" 2.5 GHz Quad-Core i5	2012-01-15	1329	-
00452	Microphone	Audio Technica		Audio Technica 897 Shotgun Mic	2018-04-23	-	-
00453	Microphone	Azden		Azden 310 Diversity Mic Package	2018-04-23	-	-

00454	Monitor	Insignia		44 inch TV	-	-	-
00455	Monitor	Sony		Sony FWD-32LX2F monitor	2016-12-01	-	-
00456	Portable Lighting	Britek	PS 300H	Studio Flash lighting	-	-	-
00457	Portable Lighting	Britek	HS 2000	Studio Flash lighting	-	-	-
00458	Portable Lighting	Britek	HS 2000	Studio Flash lighting	-	-	-
00459	Portable Lighting	DTW		Transmissive spotlight kit that has DTW-100	-	-	-
00460	Portable Lighting	Generic		Arri style light kit	Invalid date	-	-
00461	Tripod	Libec		Libec T68 Tripod w/ H22DV head	2018-04-23	-	-
00462	Hard Drives	LaCie	Thunderbolt	1 TB LaCie Rugged USB 3.0 Thunderbolt Exti-	-	-	-
00463	Office	Alienware	Aurora R8	Dell Alienware Aurora R8 Editing Computer:	2019-06-01	2843	-
00464	Office	Alienware	Aurora R8	Dell Alienware Aurora R8 Editing Computer:	2019-06-01	2843	-
00465	Office	Alienware	Aurora R8	Dell Alienware Aurora R8 Editing Computer:	2019-06-01	2843	-
00466	Office	Alienware	Mod MUO	Alienware Mouse	-	-	-
00467	Office	Alienware	Mod MUO	Alienware Mouse	-	-	-
00468	Office	Alienware	Mod MUO	Alienware Mouse	-	-	-
00469	Office	Cisco	SF100-24	24-Port 10/100 Switch	-	-	-
00470	Office	Dell	U2718Q	Dell Ultrasharp 27 4K Monitors	2019-06-01	489	-
00471	Office	Dell	U2718Q	Dell Ultrasharp 27 4K Monitors	2019-06-01	489	-
00472	Office	Dell	U2718Q	Dell Ultrasharp 27 4K Monitors	2019-06-01	489	-
00473	Office	Dell	KB212-B	Dell Keyboard	-	-	-
00474	Office	Dell	KB212-B	Dell Keyboard	-	-	-
00475	Office	Dell	Optiplex 990	Dell Computer for Intern/CD Printing	-	-	-
00476	Office	Dell	P2011H	Dell Monitor	-	-	-
00477	Office	Dell	KB212-B	Dell Keyboard	-	-	-
00478	Office	Dell	MS111-P	Dell Mouse	-	-	-
00479	Office	Lenovo	Thinkpad T520	Lenovo Laptop	-	-	-
00480	Office	Logitech	Z200	Multimedia Speakers	-	-	-
00481	Office	Logitech	Z200	Multimedia Speakers	-	-	-
00482	Office	Logitech	Z200	Multimedia Speakers	-	-	-
00483	Office	Netgear	GS608v4	8-Port Gigabit Ethernet Switch	-	-	-
00484	Office	PC Gear		PC Gear Keyboard	-	-	-
00485	Office	Primera		Disc Publisher SE printer	-	-	-
00486	Office	Seagate		Seagate Barracuda XT 4TB HDD	-	-	-
00487	Office	Shure		Dynamic Microphone	-	-	-
00488	Office	Torsa	6023YE3A134VG2C25B14MC14FC	Torsa High Back Desk Chair Black Upholster	2020-02-04	424	-
00489	Office	Torsa	6023YE3A134VG2C25B14MC14FC	Torsa High Back Desk Chair Black Upholster	2018-11-09	407	-
00490	Office	Torsa	6023YE3A134VG2C25B14MC14FC	Torsa High Back Desk Chair Black Upholster	2018-11-09	407	-
00491	Office	TP-Link	TL-SG1008D	8-Port Gigabit Desktop Switch	-	-	-

00492	Office	Zylex Acoustic Corp AX510		Multimedia Speakers	-	-	-
00493	Phone	SNOM	D785	SNOM Office Telephone	-	-	-
00494	Phone	SNOM	D785	SNOM Office Telephone	-	-	-
00495	Phone	SNOM	D785	SNOM Office Telephone	-	-	-
00496	Tripod	Takama	TAKV3300	Takama TAKV3300 Tripod	-	2017-09-01	-
00497	Camera	Canon		Canon Rebel T3 w/ 18-55mm IS II Lens Kit	-	2012-12-01	400
00498	Camera Accessories	Lowepro		Lowepro Adventura TLX 25	-	2012-12-01	30
00499	Edit	Apple		Apple MacBook Pro 15 Inch w/ Retina	-	2013-07-01	2403
00500	Monitor	Sony		Sony FWD-32LX2F monitor	-	2016-12-01	-
00501	Office	Dell	UltraSharp 27	Dell UltraSharp 27 4K Monitors	-	2019-06-01	489
00502	Office	Intel	NUCT717BHN	PC Computer Core i7 with keyboard, mouse	-	2019-08-12	867
00503	Office	Torsa	6023YE3A134V62C25B14MC14FC	Torsa High Back Desk Chair Black Upholster	-	2017-09-19	496
00504	XR	DAACKIT		Carrying Cases for Oculus Go VR Headsets	-	2019-09-01	21
00505	XR	DAACKIT		Carrying Cases for Oculus Go VR Headsets	-	2019-09-01	21
00506	XR	DAACKIT		Carrying Cases for Oculus Go VR Headsets	-	2019-09-01	21
00507	Camera	Insta360	OneX	XR-Insta360_#1XR-Insta360_#1 ... Insta360	-	2019-09-01	430
00508	Camera	Insta360	OneX	Insta360 OneX Cameras. This camera was s	-	2019-09-01	430
00509	XR	Oculus	Go 64 GB	Oculus Go 64 GB Headsets	-	2019-09-01	250
00510	XR	Oculus	Go 64 GB	Oculus Go 64 GB Headsets	-	2019-09-01	250
00511	XR	Oculus	Go 64 GB	Oculus Go 64 GB Headsets	-	2019-09-01	250
00512	XR	Oculus	Quest 128 GB	Oculus Quest 128 GB Headsets	-	2019-09-01	500
00513	XR	Oculus	Quest 128 GB	Oculus Quest 128 GB Headsets	-	2019-09-01	500
00514	XR	Sony	MDRZX110	Sony MDRZX110/BLK Black 3.5mm Jack W/ir	-	2019-09-12	15
00515	XR	Sony	MDRZX110	Sony MDRZX110/BLK Black 3.5mm Jack W/ir	-	2019-09-12	15
00516	XR	Sony	MDRZX110	Sony MDRZX110/BLK Black 3.5mm Jack W/ir	-	2019-09-12	15
00517	XR	Sony	MDRZX110	Sony MDRZX110/BLK Black 3.5mm Jack W/ir	-	2019-09-12	15
00518	XR	Sony	MDRZX110	Sony MDRZX110/BLK Black 3.5mm Jack W/ir	-	2019-09-12	15
00519	XR	VAERLN		Carrying Cases for VR Headsets	-	2019-09-01	21
00520	XR	VAERLN		Carrying Cases for VR Headsets	-	2019-09-01	21
00521	Edit	Apple		Apple MacBook Pro 15 Inch w/ Retina	-	2013-07-01	2403
00522	Monitor	LG		LG HDMI Monitor w/wall mount	-	2015-02-01	650
00523	Monitor	Sony		Sony Trinitron 13" Monitor	-	-	150
00524	Office	Dell	R8	Dell Alien Aurora R8 Editing Computers	-	2019-06-01	2843
00525	Office	Dell	UltraSharp 27	Dell UltraSharp 27 4K Monitors	-	2019-06-01	489
00526	Office	Dell	UltraSharp 27	Dell UltraSharp 27 4K Monitors	-	2019-06-01	489
00527	Office	Torsa	6023YE3A134V62C25B14MC14FC	Torsa High Back Desk Chair Black Upholster	-	2018-11-09	407
00528	Playback	Panasonic		Panasonic DMR-ES15 DVD Recorder	-	-	100
00529	Playback	Unknown		Security DVR G4-SDIPRO	-	2015-02-01	2500

00530	Tape Decks	Sony		Sony DSR-45 DVCAM Deck	-	600
00531	Tape Decks	Sony		Sony DSR-45 DVCAM Deck	-	600
00532	Tape Decks	Sony		Sony DSR-1800 DVCAM Deck	-	300
00533	Tape Decks	Sony		Sony SVP-9000 SVHS Deck	-	100
00534	Tape Decks	Sony		Sony VO-5800 U-Matic Deck	-	300
00535	Tape Decks	Sony		Sony DSR-25 DVCAM Deck	-	300
00536	Edit	Apple		Apple iMac 27" 3.4 GHz Quad-Core i7	2012-01-15	2754
00537	Monitor	Sony		Sony FWD-32LX2F monitor	2016-12-01	-
00538	Office	Dell	R8	Dell Alien Aurora R8 Editing Computers	2019-06-01	2843
00539	Office	Dell	UltraSharp 27	Dell UltraSharp 27 4K Monitors	2019-06-01	489
00540	Office	Torsa	6023YE3A134VVG2C25B14MC14FC:	Torsa High Back Desk Chair Black Upholster	2018-11-09	407
00541	Edit	Apple		Apple MacBook Pro 15 Inch w/ Retina	2013-07-01	2403
00542	Office	Intel	NUC717BHN	PC Computer Core i7 with keyboard, mouse	2019-07-10	864
00543	Office	Torsa	6023YE3A134VVG2C25B14MC14FC:	Torsa High Back Desk Chair Black Upholster	2018-11-09	407
00544	Office	Aviera	VRGA1MA24G1CPAC	Aviera Lobby guest upholstered Chair Raspt	2016-03-30	496
00545	Office	Aviera	VRGA1MA24G1CPAC	Aviera Lobby guest upholstered Chair Raspt	2016-03-30	496
00546	Office	Unknown		Mezzanine Square Occasional Table 24 x 24	2016-03-30	562
00547	Office	Apple		Apple iPad Mini MD528LL/A	2012-11-01	455
00548	Office	Apple		Apple iPad Mc733LL 16 GB Black	2012-07-01	776
00549	Office	Kenmore	795.79433.214	Refrigerator	2015-04-28	1241
00550	Edit	Apple		Apple iMac 21.5" 2.5 GHz Quad-Core i5	2012-01-15	1329
00551	Monitor	Marshall		Marshall Rackmount Monitor V-R185-DLW	2015-02-01	1950
00552	Monitor	Sony		Sony FWD-32LX2F monitor	2016-12-01	-
00553	Office	Apple		Apple Airport Extreme MD031LL/A	2012-07-01	170
00554	Playback	AJA		AJA Helo Streaming Device	2017-09-01	1250
00555	Playback	APC		APC UPS	-	200
00556	Playback	ATP		ATP Inc. Cat 6 patch bay	-	150
00557	Playback	ATP		ATP Inc. Cat 6 patch bay	-	150
00558	Playback	ATP		ATP Inc. Cat 6 patch bay	-	150
00559	Playback	ATP		ATP Inc. Cat 6 patch bay	-	150
00560	Playback	AVP		AVP Video Patch Bay 2RU AV-D232-AMN75	2015-02-01	1200
00561	Playback	AVP		AVP Video Patch Bay 2RU AV-D232-AMN75	2015-02-01	1200
00562	Playback	AVP		AVP Video Patch Bay 2RU AV-D232-AMN75	2015-02-01	1200
00563	Playback	BlackMagic		BlackMagic Design HDMI to SDI Converter	2017-09-01	85
00564	Playback	BlackMagic		BlackMagic Design Up/Down/Cross Convert	2017-09-01	275
00565	Playback	Blackmagic		Blackmagic 40x40 Router VHUBSMRT6G40	2015-02-01	2850
00566	Playback	Blackmagic		Blackmagic SDI to Analog CONVMASA4K	2015-02-01	280
00567	Playback	Blackmagic		Blackmagic SDI to Analog CONVMASA4K	2015-02-01	280

00568	Playback	Blackmagic	Blackmagic SDI to Analog CONVMASA4K	2015-02-01	280
00569	Playback	Blackmagic	Blackmagic SDI to Analog CONVMASA4K	2015-02-01	280
00570	Playback	Blackmagic	Blackmagic SDI to Analog CONVMASA4K	2015-02-01	280
00571	Playback	Blackmagic	Blackmagic SDI to Analog CONVMASA4K	2015-02-01	280
00572	Playback	Blackmagic	Blackmagic SDI to Analog CONVMASA4K	2015-02-01	280
00573	Playback	Blackmagic	Blackmagic Audio to SDK CONVMCAUD4K	2015-02-01	280
00574	Playback	Blackmagic	Blackmagic Audio Monitor AUDMON1RU	2015-02-01	1420
00575	Playback	Checkpoint	Checkpoint Office Firewall	-	150
00576	Playback	Comlan	Comlan SDI to ASI Encoder	2017-09-01	2495
00577	Playback	Dell	Dell Inspiron 9400 Laptop	-	500
00578	Playback	Dell	Dell PowerEdge 2900 Server & Monitor	-	5000
00579	Playback	Dishnet	Dishnet VIP 2112 Receiver	2015-02-01	150
00580	Playback	E-Machines	E-Machines Computer	-	500
00581	Playback	Ensemble Designs	Ensemble Designs Bright Eye 56	2015-02-01	2600
00582	Playback	Extron	Extron VSC500	-	100
00583	Playback	Ikegami	Ikegami TM6-1B	-	200
00584	Playback	Ikegami	Ikegami TM6-1B	-	200
00585	Playback	Ikegami	Ikegami TM6-1B	-	200
00586	Playback	Juniper	Juniper	-	200
00587	Playback	Motorola	Motorola DCH 70	-	-
00588	Playback	Netgear	Netgear Prosafe 24 Port Gigabit Switch	-	150
00589	Playback	Ocean Matrix	Ocean Matrix DMX -M0A6	-	300
00590	Playback	Roland	Roland Scan Converter VC-1-SC	2015-02-01	950
00591	Playback	Roland	Roland Scan Converter VC-1-SC	2015-02-01	950
00592	Playback	Roland	Roland Scan Converter VC-1-SC	2015-02-01	950
00593	Playback	Roland	Roland Scan Converter VC-1-SC	2015-02-01	950
00594	Playback	Roland	Roland Scan Converter VC-1-SC	2015-02-01	950
00595	Playback	Roland	Roland Scan Converter VC-1-SC	2015-02-01	950
00596	Playback	Roland	Roland Scan Converter VC-1-SC	2015-02-01	950
00597	Playback	Scientific Atlanta	Scientific Atlanta Prisma DTX	-	2500
00598	Playback	Scientific Atlanta	Scientific Atlanta Encoder Model D9022	-	200
00599	Playback	Sony	Sony DSR45	-	300
00600	Playback	Sony	Sony DVD Recorder Model RDR GX7	-	200
00601	Playback	Startech	Startech Composite to VGA Converter	2017-09-01	125
00602	Playback	Telvue	Telvue Hypercaster AIOB2000-8	2017-09-01	33600
00603	Playback	Tiltrac	Tiltrac 2 Bay Rack	-	500
00604	Playback	TP-Link	TP-Link TL-SG 3424 Jet Stream L2	-	600
00605	Playback	Unknown	(4) 1500VA rackmount UPS	2017-09-01	2600

00606	Playback	Unknown	Additional Materials	2015-02-01	1800
00607	Playback	Unknown	CC WIFI Internet Radio	-	200
00608	Playback	Verizon	Verizon Action Tec M1424WR	-	50
00609	Security	Unknown	DS7216HWI-ST 16 Channel DVR	2015-07-01	-
00610	Security	Unknown	HKHDD1T Hard Drive	2015-07-01	-
00611	Security	Unknown	DCR4352 Power Supply	2015-07-01	-
00612	Audio	Sony	Sony MDR-Zx100 Headphones	2012-09-12	90
00613	Audio	Sony	Sony MDR-Zx100 Headphones	2012-09-12	90
00614	Audio	Sony	Sony MDR-Zx100 Headphones	2012-09-12	90
00615	Edit	Apple	Apple MacBook Pro 15 Inch w/ Retina	2013-07-01	2403
00616	Hard Drives	Lacie	Lacie D2 Quadra 4 TB	2013-02-01	330
00617	Office	Lenovo	Thinkpad Laptop	2015-12-01	200
00618	Office	Lenovo	Thinkpad Laptop	2015-12-01	200
00619	Office	Lenovo	Thinkpad Laptop	2015-12-01	200
00620	Office	Lenovo	Thinkpad Laptop	2015-12-01	200
00621	Office	Lenovo	Thinkpad Laptop	2015-12-01	200
00622	Office	Lenovo	Thinkpad Laptop	2015-12-01	200
00623	Office	Lenovo	Thinkpad Laptop	2015-12-01	200
00624	Office	Lenovo	Thinkpad Laptop	2015-12-01	200
00625	Office	Lenovo	Thinkpad Laptop	2015-12-01	200
00626	Office	Lenovo	Thinkpad Laptop	2015-12-01	200
00627	Office	Lenovo	Thinkpad Laptop	2015-12-01	200
00628	Office	Lenovo	Lenovo Desktop	2015-12-01	200
00629	Office	Lenovo	Lenovo Desktop	2015-12-01	200
00630	Office	Lenovo	Lenovo Desktop	2015-12-01	200
00631	Office	Lenovo	Lenovo Laptop	2015-12-01	200
00632	Security	Alphone	LEF-5 Master Stations	2015-07-01	-
00633	Security	SKNET	SKNET Software	2015-07-01	-
00634	Security	Unknown	2 Gig Control and Keypad	2015-07-01	-
00635	Security	Unknown	Magnetic Door Contacts	2015-07-01	-
00636	Security	Unknown	PIR Interior Motion Detectors	2015-07-01	-
00637	Security	Unknown	LED Door Stations	2015-07-01	-
00638	Security	Unknown	PS1225UL Power Supply	2015-07-01	-
00639	Security	Unknown	RYPA Door Relays	2015-07-01	-
00640	Security	Unknown	SKACPLE 2 Door Controllers	2015-07-01	-
00641	Security	Unknown	HID 6005 Proximity Card Readers	2015-07-01	-
00642	Security	Unknown	Electronic Door Strikes	2015-07-01	-
00643	Security	Unknown	SMP-5 Power Supply	2015-07-01	-

00644	Security	Unknown		BAT7 Batteries	2015-07-01	-
00645	Security	Unknown		Proximity Keyfobs	2015-07-01	-
00646	Security	Unknown		DS2CE55C2N Interior 700TVL Analog Color (2015-07-01	2015-07-01	-
00647	Security	Unknown		DS2CE55C2N Interior 700TVL Analog Color (2015-07-01	2015-07-01	-
00648	Security	Unknown		DS2CE55C2N Interior 700TVL Analog Color (2015-07-01	2015-07-01	-
00649	Security	Unknown		DS2CE55C2N Interior 700TVL Analog Color (2015-07-01	2015-07-01	-
00650	Security	Unknown		DS2CE55C2N Interior 700TVL Analog Color (2015-07-01	2015-07-01	-
00651	Security	Unknown		DS2CE15C2NIR Exterior 700TVL Analog Colo 2015-07-01	2015-07-01	-
00652	Security	Unknown		DS2CE15C2NIR Exterior 700TVL Analog Colo 2015-07-01	2015-07-01	-
00653	Security	Unknown		DS2CE15C2NIR Exterior 700TVL Analog Colo 2015-07-01	2015-07-01	-
00654	Room	Studio A_Large		Studio A	-	0
00655	Room	Studio B_Small		Studio B	-	0
00656	Room	Studio C_Stream		Studio C Stream	-	0
00657	Room	Classroom		Classroom	-	-
00658	Room	Conference Room		Conference Room	-	0
00659	Room	Studio A_ONLY (no		Studio A ONLY - no control room privileges - -	-	0
00660	Room	Studio B_ONLY (no		Studio B ONLY - no control room privileges - -	-	0
00661	Room	Studio A_UNAVAILABLE		Studio A_UNAVAILABLE - Use with "Membr-	-	0
00662	Room	Studio B_UNAVAILABLE		Studio B_UNAVAILABLE - Use with "Membr-	-	0
00663	Room	Studio C_Stream_U		Studio C_Stream_UNAVAILABLE - Use with -	-	0
00664	Office	ASUS	PN50-BBR065 MD	New computer for Executive Director install	2021-04-15	0
00665	Camera	Insta360	OneX	XR_Insta360_#2... Insta360 OneX Camer	2019-09-01	430
00666	Playback	Dell	Vostro 3500	Laptop purchased for playback of SLB Radio	2021-05-10	534
00667	Office	ASUS	TUF FND Gaming Laptop	Laptop for Gladys home use for programmir	2021-07-30	1062
00668	Edit	Acer	Inspire 5 Notebook Laptop	Laptop for Pocast use.	2021-09-03	694
00669	Audio	Zoom	H6	Recorder for Pocast use.	2021-09-03	283
00670	Microphone	Blue	Yeti	USB Microphone for Pocast use.	2021-09-03	100
00671	Microphone	Blue	Yeti	USB Microphone for Pocast use.	2021-09-03	100
00672	Microphone	IK Multimedia	iRig Mic Lav2 Pack	2 Lavellere mic kit for Pocast use	2021-09-03	56
00673	Audio	Focusrite	Scarlet 2i2	USB Audio Interface for pocast use.	2021-09-03	138
00674	Microphone	Audio-Technica	ATR2100X	USB Microphone for Pocast use.	2021-09-03	74
00675	Microphone	Audio-Technica	ATR2100X	USB Microphone for Pocast use.	2021-09-03	74
00676	Microphone	Audio-Technica	ATR2100X	USB Microphone for pocast use.	2021-09-03	74
00677	Microphone	Audio-Technica	ATR2100X	USB Microphone for Pocast use.	2021-09-03	74
00678	Audio	Rode	PSA1 Boom Arm	Mic Boom Arm for pocast use.	-	0
00679	Audio	Rode	PSA1 Boom Arm	Mic Boom Arm for pocast use.	2021-09-03	74
00680	Audio	On-Stage	MY420 Shock Mount	Microphone shock mount for pocast use.	2021-09-03	40
00681	Audio	On-Stage	MY420 Shock Mount	Microphone shock mount for pocast use.	2021-09-03	40

00682	Audio	Audio-Technica	M20 x Headphones	Headphones for podcast use.	2021-09-03	37
00683	Audio	Audio-Technica	M20 x Headphones	Headphones for podcast use.	2021-09-03	37
00684	Audio	Audio-Technica	M20 x Headphones	Headphones for podcast use.	2021-09-03	37
00685	Audio	Audio-Technica	M20 x Headphones	Headphones for podcast use.	2021-09-03	37
00686	Audio	Neewer	Professional Mic Pop-filter	Mic pop filter for podcast use.	2021-09-03	9
00687	Audio	Neewer	Professional Mic Pop-filter	Mic pop-filter for podcast use.	2021-09-03	9
00688	Remote Equipment	AJA	U-TAP/SDI	AJA U-TAP SDI. Purchased to stream from t	2021-12-02	300
00690	Camera	Canon	XA40	XA40 Canon Camcorder	2022-06-08	1699
00691	power cable	Canon	CA-570	Power adapter for the XA40 Camcorder	-	0
00692	Camera bag	Arco	CS-D20B	Camera bag for XA40	-	0
00693	iPad	Apple	iPad 9th Generation Wi-Fi 64GB	iPad for credit card processing	2022-10-28	329