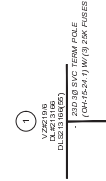
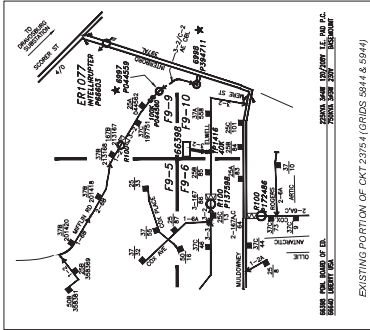


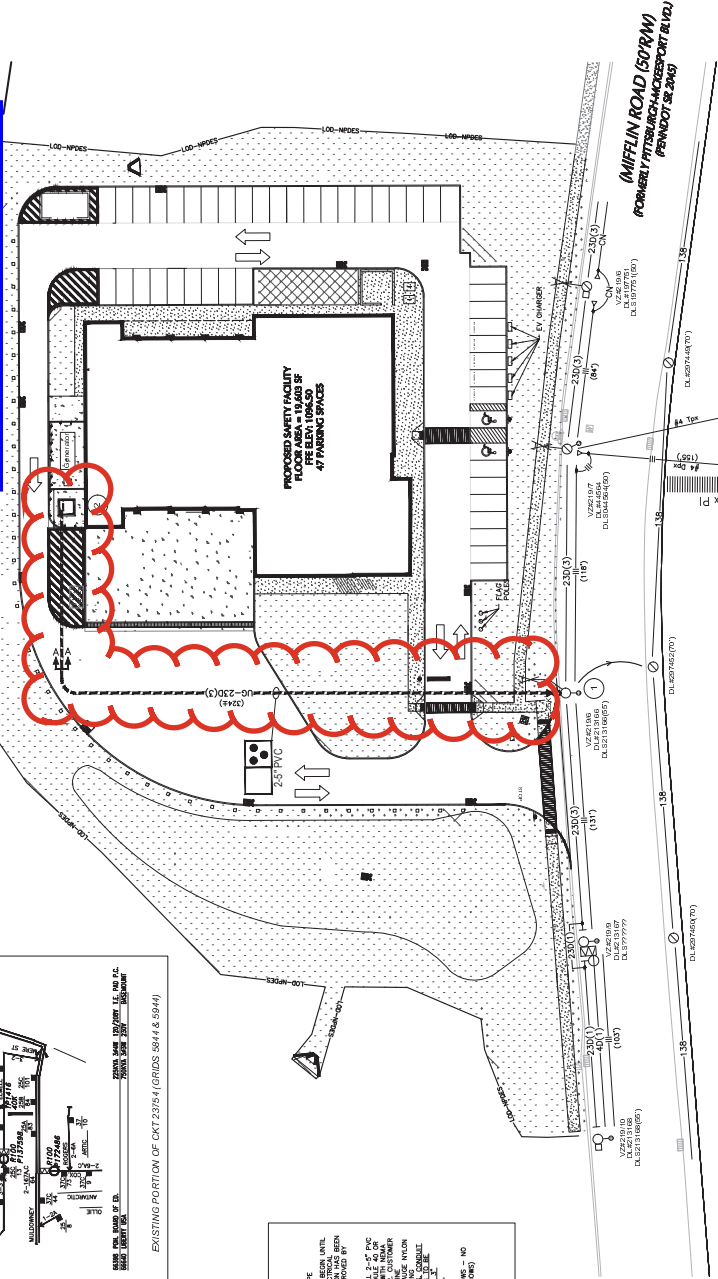
No. 930794-T1

LEGEND

	EMPTY CONDUIT
	INSTALL 3/4" EAL
	DLCO TRANSFORMER



CITY OF PITTSBURGH 184-E-80

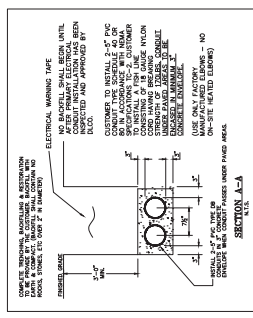


RELATED AND REFERENCE DRAWINGS

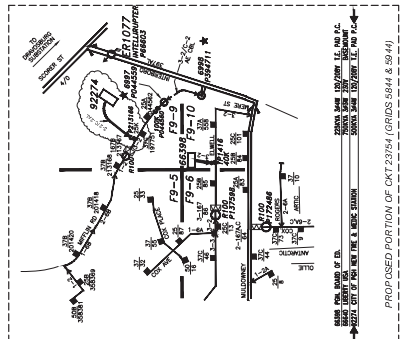
930794-T1 - CONSTRUCTION DETAILS, CUSTOMER CONDUIT PLAN & MAP UPDATES
 930794-T2 - CONSTRUCTION DETAILS & ELECTRICAL LAYOUT FOR A ROOFA RAMP PAD
 6854 - STANDARD DRAWING FOR POST AND CHAIN BARRIER (IF NECESSARY)

SUMMARY

DLG WORK	QTY	PRIVATE PROPERTY	MUNICIPALITY
CONDUIT	1		
TRANSFORMER	1		
WIRE & BUS LABEL		SEE DWG 930794-T1	



MAP: F9-9
 CKT: D23754-2
 GS: 23754 - GRIDS 9844



SUBSURFACE STRUCTURE CLEARANCES FROM LG PRIMARY CONDUCTORS

STRUCTURE TYPE	MINIMUM CLEARANCE (FT)	CONDUCTOR
SHED	1 FT	1 FT
WIRE	15 FT	15 FT
WALL	1 FT	1 FT
TELEPHONE	1 FT	1 FT

REVISIONS

NO.	DATE	BY	REVISION
1	1/2/26	C. BERKLEY	ISSUE FOR PERMIT
2	1/2/26	C. BERKLEY	ISSUE FOR PERMIT

DLG ENGINEERING LIGHTING

FORMERLY PITTSBURGH ACCESSORY BLVD

1233 MIFFLIN RD
 SUPPLY 1207/08V 30' 7" W SVIC TO NEW
 CITY OF PGH MEDIC / FIRE STATION

NEW COMMERCIAL BUSINESS
 PITTSBURGH (31ST WD), PA 15207

DATE: 1/2/26
 DRAWN BY: C. BERKLEY
 CHECKED BY: C. BERKLEY
 PROJECT NO.: 20-0005
 SHEET NO.: 930794-T1
 OF: 0